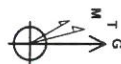


JUN 08 2015

WV GEOLOGICAL SURVEY
MORGANTOWN, WV



Belle Unit 3H
Richie County WV
Northing: 14281134.20
Easting: 1661500.66
As Drilled



To convert Magnetic North to Grid, Subtract 8.42°
To convert True North to Grid, Subtract 0.05°

Azinuths to Grid North
True North: -0.05°
Magnetic North: -8.42°
Magnetic Field
Strength: 52365.48nT
Dip Angle: 66.69°
Date: 3/2/2014
Model: IGRF2010

Frontier 25; Belle Unit 2H; GL 1004 * 28 RKB @ 1032.0uqt
1004.0

WELL DETAILS

Ground Level:	1004.0	Longitude	
+N/-S	0.0	Latitude	39° 19' 38.474 N 80° 55' 31.591 W
+E/-W	0.0	Northing	14281134.20
		Easting	1661500.66

PROJECT DETAILS: Richie County WV

Geodetic System: Universal Transverse Mercator (US Survey Feet)
Datum: NAD 1927 (NADCON CONUS)
Ellipsoid: Clarke 1866
Zone: Zone 17N (84 W to 78 W)
System Datum: Mean Sea Level

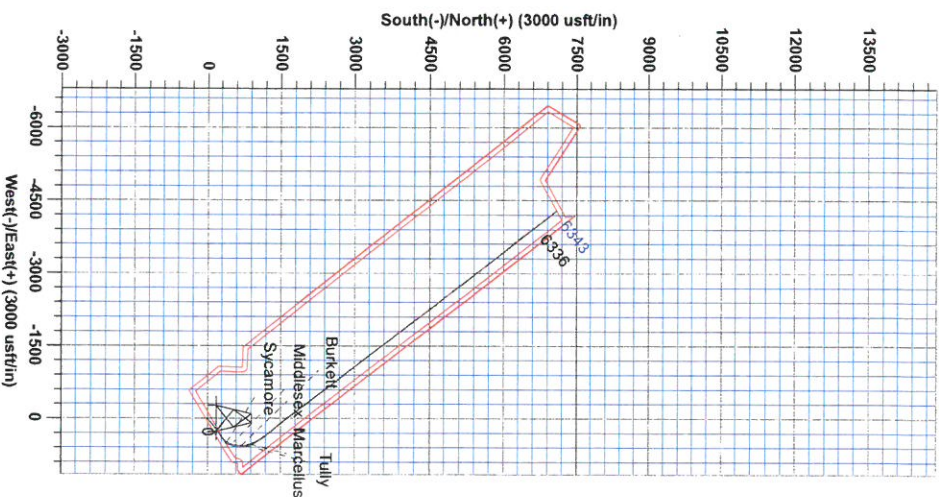
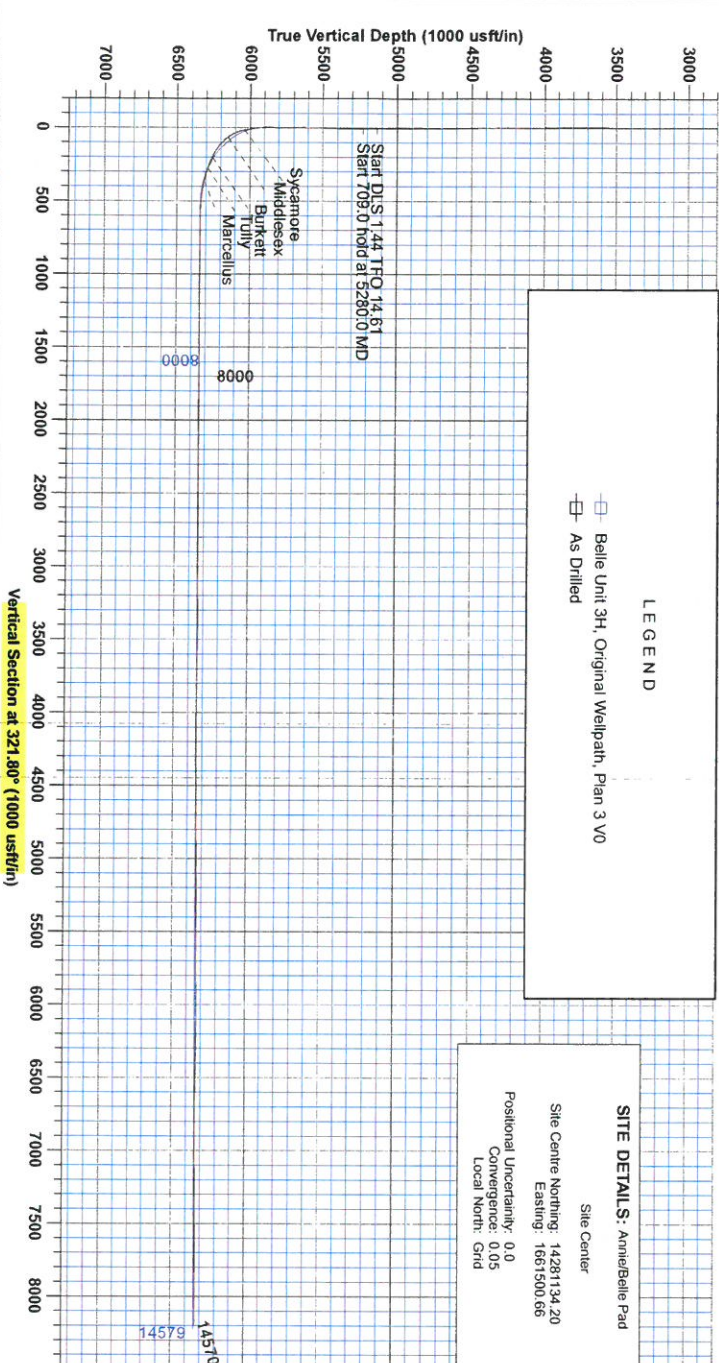
Game Lighthouse
10.11, April 10 2014
Scientific Drilling
421 South Eagle Lane
Dixiana City, OK 73128

LEGEND

- Belle Unit 3H, Original Wellpath, Plan 3 V0
- As Drilled

SITE DETAILS: Armer/Belle Pad

Site Center
Site Centre Northing: 14281134.20
Easting: 1661500.66
Positional Uncertainty: 0.0
Convergence: 0.05
Local North Grid





RECEIVED

JUN 08 2015

WV GEOLOGICAL SURVEY
MORGANTOWN, WV

Antero Resources

Ritchie County WV
Annie/Belle Pad
Belle Unit 3H
Original Wellpath

Design: As Drilled

EOW Completion Report

10 April, 2014



Company: Antero Resources	Local Co-ordinate Reference: Well Belle Unit 3H
Project: Ritchie County WV	TVD Reference: Frontier 25: Belle Unit 2H: GL 1004' + 28' RKB @
Site: Annie/Belle Pad	MD Reference: Frontier 25: Belle Unit 2H: GL 1004' + 28' RKB @
Well: Belle Unit 3H	North Reference: Grid
Wellbore: Original Wellpath	Survey Calculation Method: Minimum Curvature
Design: As Drilled	Database: Oklahoma District

Project	Ritchie County WV, Ritchie County WV, WV North		
Map System:	Universal Transverse Mercator (US Survey Fee	System Datum:	Mean Sea Level
Geo Datum:	NAD 1927 (NADCON CONUS)		
Map Zone:	Zone 17N (84 W to 78 W)		

Site	Annie/Belle Pad				
Site Position:		Northing:	14,281,134.20 usft	Latitude:	39° 19' 38.474 N
From:	Map	Easting:	1,661,500.66 usft	Longitude:	80° 55' 31.591 W
Position Uncertainty:	0.0 usft	Slot Radius:	13-3/16"	Grid Convergence:	0.05 °

Well	Belle Unit 3H					
Well Position	+N/-S	0.0 usft	Northing:	14,281,134.20 usft	Latitude:	39° 19' 38.474 N
	+E/-W	0.0 usft	Easting:	1,661,500.66 usft	Longitude:	80° 55' 31.591 W
Position Uncertainty		2.0 usft	Wellhead Elevation:	1,032.0 usft	Ground Level:	1,004.0 usft

Wellbore	Original Wellpath				
-----------------	-------------------	--	--	--	--

Magnetics	Model Name	Sample Date	Declination (°)	Dip Angle (°)	Field Strength (nT)
	IGRF2010	3/5/2014	-8.37	66.89	52,365

Design	As Drilled				
---------------	------------	--	--	--	--

Audit Notes:					
Version:	1.0	Phase:	ACTUAL	Tie On Depth:	0.0
Vertical Section:	Depth From (TVD) (usft)	+N/-S (usft)	+E/-W (usft)	Direction (°)	
	0.0	0.0	0.0	321.80	

Survey Program	Date 4/10/2014				
From (usft)	To (usft)	Survey (Wellbore)	Tool Name	Description	
100.0	3,784.5	Survey #1 Gyro to Int (Original Wellpath)	SDI Standard Keeper	Scientific Drilling Intl. Standard Wireline Keeper	
3,800.0	5,176.1	Survey #3 Def Gyro to KOP (Original Well	SDI Standard Keeper	Scientific Drilling Intl. Standard Wireline Keeper	
5,223.0	14,570.0	Survey #4 MWD (Original Wellpath)	MWD SDI	MWD - Standard ver 1.0.1	

MD (usft)	Inc (°)	Azi (azimuth) (°)	TVD (usft)	N/S (usft)	E/W (usft)	V. Sec (usft)	DLeg (°/100usft)
0.0	0.00	0.00	0.0	0.0	0.0	0.0	0.00
100.0	0.37	119.58	100.0	-0.2	0.3	-0.3	0.37
200.0	0.35	138.39	200.0	-0.5	0.8	-0.9	0.12
300.0	0.12	107.83	300.0	-0.8	1.1	-1.3	0.25
400.0	0.13	149.94	400.0	-0.9	1.2	-1.5	0.09
500.0	0.20	170.10	500.0	-1.2	1.3	-1.8	0.09
600.0	0.03	215.97	600.0	-1.4	1.3	-1.9	0.18
700.0	0.09	320.34	700.0	-1.4	1.3	-1.8	0.10
800.0	0.15	272.02	800.0	-1.3	1.1	-1.7	0.11
900.0	0.13	266.47	900.0	-1.3	0.8	-1.5	0.02



Company:	Antero Resources	Local Co-ordinate Reference:	Well Belle Unit 3H
Project:	Ritchie County WV	TVD Reference:	Frontier 25: Belle Unit 2H: GL 1004' + 28' RKB @
Site:	Annie/Belle Pad	MD Reference:	Frontier 25: Belle Unit 2H: GL 1004' + 28' RKB @
Well:	Belle Unit 3H	North Reference:	Grid
Wellbore:	Original Wellpath	Survey Calculation Method:	Minimum Curvature
Design:	As Drilled	Database:	Oklahoma District

Survey

MD (usft)	Inc (°)	Azi (azimuth) (°)	TVD (usft)	N/S (usft)	E/W (usft)	V. Sec (usft)	DLeg (°/100usft)
1,000.0	0.31	268.38	1,000.0	-1.3	0.5	-1.3	0.18
1,100.0	0.28	278.11	1,100.0	-1.3	-0.1	-1.0	0.06
1,200.0	0.16	293.12	1,200.0	-1.2	-0.4	-0.7	0.13
1,300.0	0.08	258.68	1,300.0	-1.2	-0.6	-0.5	0.10
1,400.0	0.22	205.45	1,400.0	-1.3	-0.8	-0.6	0.18
1,500.0	0.18	212.24	1,500.0	-1.6	-0.9	-0.7	0.05
1,600.0	0.12	211.53	1,600.0	-1.9	-1.1	-0.8	0.06
1,700.0	0.01	203.81	1,700.0	-2.0	-1.1	-0.8	0.11
1,800.0	0.03	179.88	1,800.0	-2.0	-1.1	-0.9	0.02
1,900.0	0.16	172.06	1,900.0	-2.2	-1.1	-1.0	0.13
2,000.0	0.15	167.92	2,000.0	-2.4	-1.1	-1.2	0.02
2,100.0	0.18	159.52	2,100.0	-2.7	-1.0	-1.5	0.04
2,200.0	0.12	163.58	2,200.0	-3.0	-0.9	-1.8	0.06
2,300.0	0.07	148.50	2,300.0	-3.1	-0.9	-1.9	0.06
2,400.0	0.08	123.57	2,400.0	-3.2	-0.8	-2.0	0.03
2,500.0	0.07	64.71	2,500.0	-3.2	-0.6	-2.1	0.07
2,600.0	0.06	275.71	2,600.0	-3.2	-0.6	-2.1	0.13
2,700.0	0.05	310.96	2,700.0	-3.1	-0.7	-2.0	0.03
2,800.0	0.12	157.71	2,800.0	-3.2	-0.7	-2.1	0.17
2,900.0	0.16	77.28	2,900.0	-3.3	-0.5	-2.2	0.18
3,000.0	0.15	209.23	3,000.0	-3.4	-0.5	-2.4	0.28
3,100.0	0.10	56.18	3,100.0	-3.4	-0.5	-2.4	0.24
3,200.0	0.23	130.46	3,200.0	-3.5	-0.2	-2.6	0.22
3,300.0	0.33	138.26	3,300.0	-3.9	0.1	-3.1	0.11
3,400.0	0.37	102.71	3,400.0	-4.1	0.6	-3.6	0.22
3,500.0	0.31	72.19	3,500.0	-4.1	1.2	-4.0	0.19
3,600.0	0.22	53.97	3,600.0	-3.9	1.6	-4.1	0.12
3,700.0	0.25	59.08	3,700.0	-3.7	1.9	-4.1	0.04
3,784.5	0.22	72.10	3,784.5	-3.6	2.2	-4.2	0.07
3,800.0	0.36	69.92	3,800.0	-3.5	2.3	-4.2	0.91
3,900.0	2.69	50.33	3,899.9	-1.9	4.4	-4.3	2.35
4,000.0	5.34	48.26	3,999.7	2.7	9.7	-3.9	2.65
4,100.0	7.97	47.58	4,099.0	10.4	18.3	-3.1	2.63
4,200.0	10.33	47.94	4,197.7	21.1	30.1	-2.0	2.36
4,300.0	12.88	55.06	4,295.7	33.5	45.9	-2.0	2.92
4,400.0	15.36	43.83	4,392.7	49.5	64.2	-0.8	3.68
4,500.0	15.38	44.81	4,489.1	68.4	82.7	2.6	0.26
4,600.0	14.89	51.77	4,585.6	85.8	102.1	4.2	1.88
4,700.0	16.09	51.78	4,682.0	102.3	123.1	4.3	1.20
4,800.0	16.08	55.39	4,778.1	118.7	145.4	3.4	1.00
4,900.0	15.94	52.77	4,874.2	134.9	167.7	2.3	0.74
5,000.0	17.96	50.98	4,969.9	152.9	190.7	2.3	2.09
5,100.0	20.11	50.55	5,064.4	173.6	215.9	2.9	2.15
5,176.1	21.68	52.24	5,135.5	190.5	237.1	3.1	2.21
5,223.0	23.13	53.64	5,178.8	201.3	251.4	2.7	3.30

JUN 08 2015



EOW Completion Report



Company:	Antero Resources	Local Co-ordinate Reference:	Well Belle Unit 3H
Project:	Ritchie County WV	TVD Reference:	Frontier 25: Belle Unit 2H: GL 1004' + 28' RKB @
Site:	Annie/Belle Pad	MD Reference:	Frontier 25: Belle Unit 2H: GL 1004' + 28' RKB @
Well:	Belle Unit 3H	North Reference:	Grid
Wellbore:	Original Wellpath	Survey Calculation Method:	Minimum Curvature
Design:	As Drilled	Database:	Oklahoma District

Survey

MD (usft)	Inc (°)	Azi (azimuth) (°)	TVD (usft)	N/S (usft)	E/W (usft)	V. Sec (usft)	DLeg (°/100usft)
5,319.0	22.16	50.47	5,267.4	224.0	280.5	2.5	1.62
5,414.0	20.31	53.02	5,356.0	245.3	307.5	2.6	2.18
5,508.0	18.38	54.78	5,444.7	263.6	332.7	1.5	2.14
5,602.0	17.50	54.43	5,534.1	280.4	356.3	0.0	0.94
5,698.0	18.11	51.44	5,625.5	298.1	379.7	-0.5	1.14
5,793.0	17.32	52.85	5,716.0	315.9	402.5	-0.7	0.95
5,889.0	17.59	54.69	5,807.6	332.9	425.7	-1.7	0.64
5,921.0	17.94	55.13	5,838.1	338.5	433.7	-2.2	1.17
5,953.0	17.11	54.52	5,868.6	344.0	441.6	-2.7	2.66
5,985.0	17.94	52.14	5,899.1	349.8	449.3	-3.0	3.43
6,017.0	21.20	47.50	5,929.2	356.7	457.5	-2.6	11.28
6,048.0	23.74	42.34	5,957.9	365.1	465.8	-1.1	10.37
6,080.0	26.82	36.59	5,986.8	375.7	474.5	1.8	12.30
6,111.0	30.53	32.61	6,014.0	387.9	482.9	6.2	13.45
6,143.0	34.17	29.30	6,041.0	402.6	491.7	12.4	12.66
Sycamore							
6,144.0	34.29	29.21	6,041.9	403.1	491.9	12.6	12.66
6,176.0	38.16	26.92	6,067.7	419.8	500.8	20.2	12.81
6,208.0	42.38	24.72	6,092.1	438.4	509.8	29.3	13.91
6,240.0	46.78	22.70	6,114.9	459.0	518.8	39.9	14.44
6,272.0	50.39	20.77	6,136.0	481.3	527.7	51.9	12.15
6,300.0	52.92	18.30	6,153.4	502.0	535.0	63.6	11.39
Middlesex							
6,304.0	53.29	17.96	6,155.8	505.0	536.0	65.4	11.39
6,335.0	55.84	14.53	6,173.8	529.3	543.1	80.1	12.20
6,367.0	58.83	12.95	6,191.1	555.4	549.5	96.7	10.23
6,399.0	61.29	11.28	6,207.0	582.5	555.3	114.4	8.92
6,430.0	63.58	9.17	6,221.4	609.6	560.2	132.6	9.54
6,462.0	65.25	6.97	6,235.2	638.2	564.2	152.6	8.10
6,493.0	66.48	3.63	6,247.9	666.3	566.8	173.1	10.60
6,525.0	68.06	359.94	6,260.2	695.8	567.7	195.7	11.73
6,532.0	68.57	359.14	6,262.8	702.3	567.7	200.9	12.89
Burkett							
6,557.0	70.43	356.33	6,271.6	725.7	566.7	219.8	12.89
6,589.0	71.67	353.61	6,282.0	755.9	564.1	245.2	8.92
6,621.0	73.60	351.32	6,291.5	786.1	560.1	271.4	9.11
6,623.0	73.68	351.07	6,292.1	788.0	559.8	273.1	12.62
Tully							
6,652.0	74.83	347.46	6,300.0	815.4	554.6	297.9	12.62
6,684.0	76.15	343.85	6,308.0	845.4	546.9	326.2	11.67
6,717.0	77.27	341.67	6,315.6	876.1	537.4	356.2	7.27
6,721.0	77.48	341.33	6,316.4	879.8	536.2	359.9	9.84
Marcellus							
6,748.0	78.88	339.02	6,322.0	904.7	527.2	384.9	9.84
6,780.0	80.99	336.65	6,327.6	933.9	515.3	415.2	9.83



Company: Antero Resources
Project: Ritchie County WV
Site: Annie/Belle Pad
Well: Belle Unit 3H
Wellbore: Original Wellpath
Design: As Drilled

Local Co-ordinate Reference: Well Belle Unit 3H
TVD Reference: Frontier 25: Belle Unit 2H: GL 1004' + 28' RKB @
MD Reference: Frontier 25: Belle Unit 2H: GL 1004' + 28' RKB @
North Reference: Grid
Survey Calculation Method: Minimum Curvature
Database: Oklahoma District

Survey

MD (usft)	Inc (°)	Azi (azimuth) (°)	TVD (usft)	N/S (usft)	E/W (usft)	V. Sec (usft)	DLeg (°/100usft)
6,812.0	82.52	335.61	6,332.2	962.8	502.5	445.9	5.76
6,843.0	83.80	334.27	6,335.9	990.7	489.4	475.9	5.96
6,875.0	87.58	332.43	6,338.3	1,019.2	475.1	507.1	13.13
6,928.0	90.13	329.09	6,339.3	1,065.4	449.3	559.5	7.93
6,960.0	89.87	326.01	6,339.3	1,092.4	432.1	591.3	9.66
7,024.0	89.96	324.17	6,339.4	1,144.9	395.5	655.2	2.88
7,120.0	89.96	321.00	6,339.5	1,221.2	337.1	751.2	3.30
7,215.0	88.55	317.49	6,340.7	1,293.1	275.1	846.0	3.98
7,309.0	89.08	320.04	6,342.7	1,363.8	213.2	939.9	2.77
7,404.0	89.34	320.65	6,344.0	1,436.9	152.6	1,034.8	0.70
7,500.0	89.25	319.16	6,345.2	1,510.3	90.8	1,130.8	1.55
7,595.0	91.10	320.47	6,344.9	1,582.9	29.5	1,225.7	2.39
7,689.0	91.19	322.23	6,343.0	1,656.3	-29.2	1,319.7	1.87
7,785.0	91.28	323.29	6,340.9	1,732.7	-87.3	1,415.6	1.11
7,880.0	89.96	321.62	6,339.9	1,808.0	-145.2	1,510.6	2.24
7,976.0	89.69	323.02	6,340.2	1,884.0	-203.9	1,606.6	1.49
8,070.0	90.31	323.02	6,340.2	1,959.1	-260.4	1,700.6	0.66
8,166.0	89.43	322.41	6,340.4	2,035.5	-318.6	1,796.6	1.12
8,261.0	89.52	323.02	6,341.3	2,111.0	-376.1	1,891.6	0.65
8,357.0	90.13	323.20	6,341.6	2,187.8	-433.7	1,987.5	0.66
8,451.0	90.57	322.41	6,341.0	2,262.7	-490.6	2,081.5	0.96
8,546.0	89.60	322.41	6,340.8	2,338.0	-548.5	2,176.5	1.02
8,641.0	89.73	323.70	6,341.4	2,413.9	-605.6	2,271.5	1.36
8,731.0	90.22	325.48	6,341.4	2,487.2	-657.8	2,361.4	2.05
8,821.0	89.60	322.23	6,341.6	2,559.9	-710.8	2,451.3	3.68
8,913.0	89.96	321.35	6,341.9	2,632.2	-767.7	2,543.3	1.03
9,004.0	90.22	321.27	6,341.8	2,703.2	-824.6	2,634.3	0.30
9,093.0	90.57	320.83	6,341.2	2,772.4	-880.6	2,723.3	0.63
9,184.0	89.96	320.91	6,340.8	2,843.0	-938.0	2,814.3	0.68
9,274.0	89.34	320.21	6,341.3	2,912.5	-995.2	2,904.3	1.04
9,365.0	90.40	320.30	6,341.5	2,982.5	-1,053.4	2,995.2	1.17
9,455.0	91.01	320.04	6,340.4	3,051.6	-1,111.0	3,085.2	0.74
9,545.0	90.75	322.94	6,339.0	3,122.0	-1,167.0	3,175.2	3.23
9,635.0	90.13	323.02	6,338.3	3,193.9	-1,221.2	3,265.1	0.69
9,726.0	89.60	322.94	6,338.5	3,266.5	-1,276.0	3,356.1	0.59
9,820.0	90.40	323.11	6,338.5	3,341.6	-1,332.5	3,450.1	0.87
9,915.0	89.43	322.08	6,338.7	3,417.1	-1,390.2	3,545.1	1.49
10,009.0	90.13	322.50	6,339.0	3,491.5	-1,447.7	3,639.1	0.87
10,103.0	88.64	320.39	6,340.1	3,565.0	-1,506.3	3,733.1	2.75
10,197.0	88.64	318.89	6,342.3	3,636.6	-1,567.2	3,827.0	1.60
10,292.0	89.69	321.35	6,343.7	3,709.4	-1,628.1	3,921.9	2.82
10,387.0	89.69	322.67	6,344.2	3,784.3	-1,686.5	4,016.9	1.39
10,481.0	89.52	322.58	6,344.8	3,859.0	-1,743.6	4,110.9	0.20
10,575.0	90.40	321.53	6,344.9	3,933.1	-1,801.4	4,204.9	1.46
10,669.0	89.25	321.53	6,345.2	4,006.7	-1,859.9	4,298.9	1.22

JUN 08 2015



EOW Completion Report



Company:	Antero Resources	Local Co-ordinate Reference:	Well Belle Unit 3H
Project:	Ritchie County WV	TVD Reference:	Frontier 25: Belle Unit 2H: GL 1004' + 28' RKB @
Site:	Annie/Belle Pad	MD Reference:	Frontier 25: Belle Unit 2H: GL 1004' + 28' RKB @
Well:	Belle Unit 3H	North Reference:	Grid
Wellbore:	Original Wellpath	Survey Calculation Method:	Minimum Curvature
Design:	As Drilled	Database:	Oklahoma District

Survey

MD (usft)	Inc (°)	Azi (azimuth) (°)	TVD (usft)	N/S (usft)	E/W (usft)	V. Sec (usft)	DLeg (°/100usft)
10,764.0	91.71	324.78	6,344.4	4,082.7	-1,916.8	4,393.8	4.29
10,857.0	89.60	321.88	6,343.3	4,157.3	-1,972.4	4,486.8	3.86
10,952.0	89.87	321.09	6,343.8	4,231.7	-2,031.5	4,581.8	0.88
11,047.0	89.96	319.51	6,343.9	4,304.7	-2,092.2	4,676.7	1.67
11,142.0	90.92	319.24	6,343.2	4,376.8	-2,154.1	4,771.7	1.05
11,235.0	91.71	323.73	6,341.0	4,449.6	-2,211.9	4,864.6	4.90
11,330.0	90.31	323.81	6,339.4	4,526.2	-2,268.1	4,959.5	1.48
11,425.0	90.04	322.76	6,339.1	4,602.3	-2,324.9	5,054.5	1.14
11,519.0	90.48	322.06	6,338.7	4,676.8	-2,382.2	5,148.5	0.88
11,613.0	90.75	321.44	6,337.6	4,750.6	-2,440.4	5,242.5	0.72
11,707.0	89.78	320.39	6,337.2	4,823.6	-2,499.7	5,336.5	1.52
11,801.0	90.04	319.86	6,337.4	4,895.7	-2,559.9	5,430.4	0.63
11,896.0	90.75	321.09	6,336.7	4,969.0	-2,620.4	5,525.4	1.49
11,990.0	90.66	321.00	6,335.5	5,042.1	-2,679.5	5,619.4	0.14
12,084.0	90.31	321.53	6,334.8	5,115.4	-2,738.3	5,713.4	0.68
12,178.0	89.96	320.39	6,334.5	5,188.4	-2,797.5	5,807.4	1.27
12,272.0	90.64	321.86	6,334.0	5,261.6	-2,856.5	5,901.4	1.72
12,366.0	89.78	323.46	6,333.7	5,336.3	-2,913.5	5,995.3	1.93
12,461.0	90.13	323.20	6,333.8	5,412.5	-2,970.2	6,090.3	0.46
12,555.0	90.66	323.02	6,333.1	5,487.7	-3,026.7	6,184.3	0.60
12,649.0	89.08	322.14	6,333.3	5,562.4	-3,083.8	6,278.3	1.92
12,744.0	88.72	322.06	6,335.2	5,637.3	-3,142.1	6,373.2	0.39
12,838.0	88.99	321.79	6,337.0	5,711.3	-3,200.1	6,467.2	0.41
12,933.0	89.52	322.41	6,338.3	5,786.3	-3,258.4	6,562.2	0.86
13,027.0	89.25	321.62	6,339.3	5,860.3	-3,316.3	6,656.2	0.89
13,121.0	90.31	322.23	6,339.6	5,934.3	-3,374.2	6,750.2	1.30
13,215.0	89.16	321.35	6,340.1	6,008.2	-3,432.4	6,844.2	1.54
13,309.0	90.57	321.97	6,340.3	6,081.9	-3,490.7	6,938.2	1.64
13,404.0	90.31	321.79	6,339.6	6,156.7	-3,549.3	7,033.2	0.33
13,499.0	90.22	320.39	6,339.1	6,230.6	-3,609.0	7,128.2	1.48
13,594.0	90.65	319.68	6,338.4	6,303.4	-3,670.0	7,223.1	0.87
13,688.0	89.69	318.19	6,338.1	6,374.3	-3,731.8	7,317.0	1.89
13,783.0	89.52	320.04	6,338.8	6,446.1	-3,794.0	7,411.9	1.96
13,878.0	90.92	323.64	6,338.4	6,520.8	-3,852.6	7,506.9	4.07
13,973.0	90.13	322.76	6,337.5	6,596.8	-3,909.5	7,601.9	1.24
14,068.0	89.78	323.11	6,337.6	6,672.6	-3,966.8	7,696.8	0.52
14,164.0	90.66	323.29	6,337.3	6,749.5	-4,024.3	7,792.8	0.94
14,258.0	89.87	322.14	6,336.8	6,824.3	-4,081.2	7,886.8	1.48
14,352.0	89.96	322.14	6,337.0	6,898.5	-4,138.9	7,980.8	0.10
14,446.0	90.04	321.18	6,337.0	6,972.2	-4,197.2	8,074.8	1.02
14,512.0	90.31	320.21	6,336.8	7,023.3	-4,239.1	8,140.8	1.53
14,570.0	90.31	320.21	6,336.4	7,067.9	-4,276.2	8,198.7	0.00

JUN 08 2015



EOW Completion Report



Company:	Antero Resources	Local Co-ordinate Reference:	Well Belle Unit 3H
Project:	Ritchie County WV	TVD Reference:	Frontier 25: Belle Unit 2H: GL 1004' + 28' RKB @
Site:	Annie/Belle Pad	MD Reference:	Frontier 25: Belle Unit 2H: GL 1004' + 28' RKB @
Well:	Belle Unit 3H	North Reference:	Grid
Wellbore:	Original Wellpath	Survey Calculation Method:	Minimum Curvature
Design:	As Drilled	Database:	Oklahoma District

Design Annotations

Measured Depth (usft)	Vertical Depth (usft)	Local Coordinates		Comment
		+N/-S (usft)	+E/-W (usft)	
6,143.0	6,041.0	402.6	491.7	Sycamore
6,300.0	6,153.4	502.0	535.0	Middlesex
6,532.0	6,262.8	702.3	567.7	Burkett
6,623.0	6,292.1	788.0	559.8	Tully
6,721.0	6,316.4	879.8	536.2	Marcellus

Checked By: _____ Approved By: _____ Date: _____