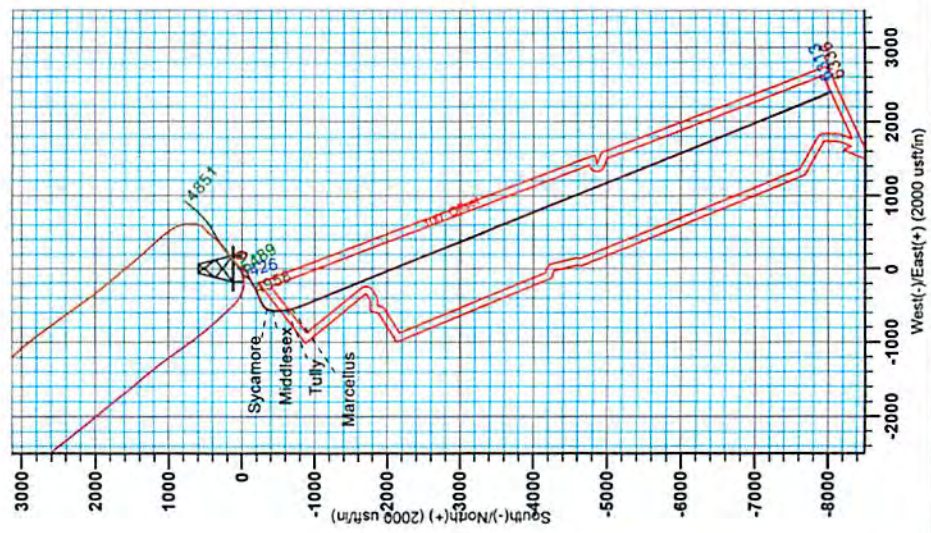
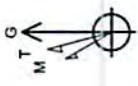


85.10057

Actuals to Grid North  
 True North - 0.00°  
 Magnetic North - 0.43°  
 Magnetic Field  
 Strength: 52358.9nT  
 Dip Angle: 66.88°  
 Date: 4/20/2014  
 Model: IGRF2010

To convert Magnetic North to Grid, Subtract 0.43°  
 To convert True North to Grid, Subtract 0.00°



**WELL DETAILS:** Chandos Unit 2H

Ground Level	968.0	Subst
+NLS	0.0	
+E/W	0.0	
Northing	14283527.87	
Easting	1663008.37	
Longitude	39° 20' 2.129 860" 55" 12.371 W	
Latitude	96.80	

**PROJECT DETAILS:** Ritchie County WV

Geodetic System: Universal Transverse Mercator (US Survey Feet)  
 Datum: NAD83  
 Ellipsoid: GRS 1980  
 Zone: Zone 17N (84 W to 78 W)  
 System Datum: Mean Sea Level

**REFERENCE INFORMATION**

Original (NE) Reference: Well Chandos Unit 2H, Grid North  
 Survey Point Reference: CHANDOS UNIT 2H, 20' @ 998.0usft  
 Measured Depth Reference: Chandos Unit 2H, 20' @ 998.0usft  
 Calculation Method: Minimum Curvature

- LEGEND**
- Blanche Unit 3H, Original Wellpath, As Drilled V0
  - Anna Unit 2H, Original Wellpath, As Drilled V0
  - Anna Unit 3HRB, Original Wellpath, As Drilled V0
  - Cairo-Anna Unit 1H, Original Wellpath, As Drilled V0
  - Anna Unit 3H, Original Wellpath, As Drilled V0
  - Blanche Unit 1H, Original Wellpath, As Drilled V0
  - Chandos Unit 2H, Original Wellpath, Plan 7 V0
  - As Drilled

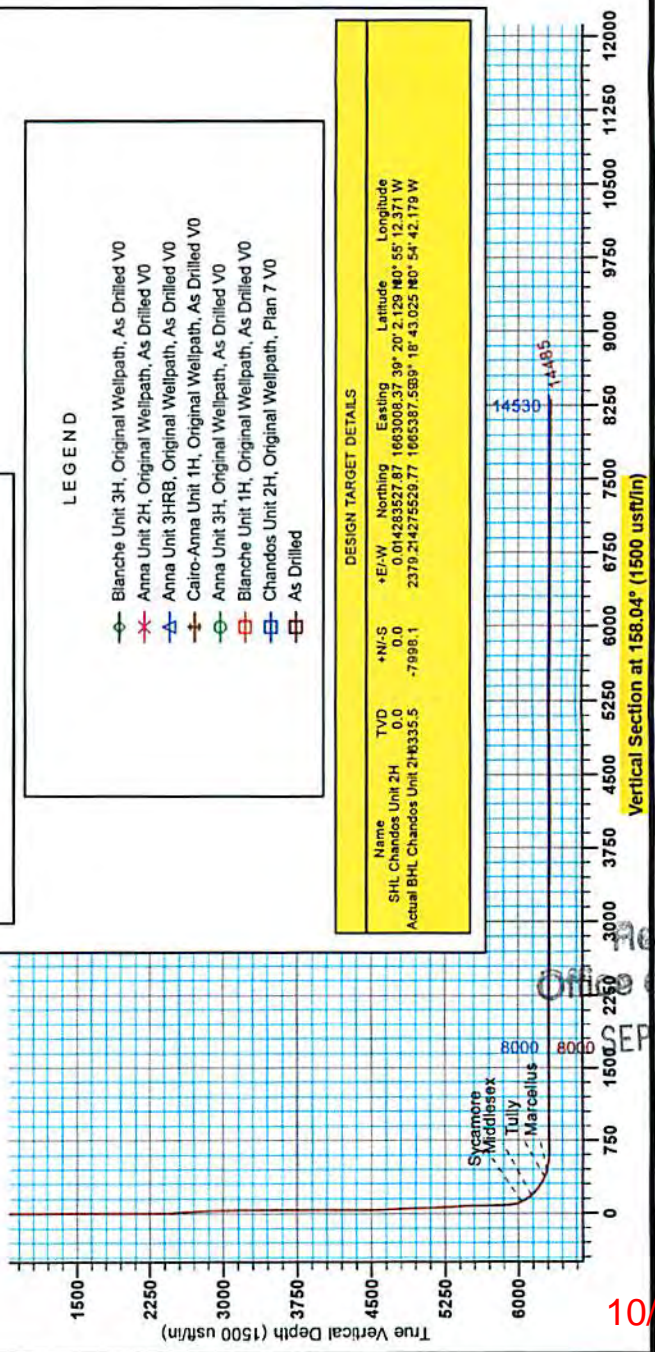
**DESIGN TARGET DETAILS**

Name	TVD	+NLS	+E/W	Northing	Easting	Latitude	Longitude
SHL Chandos Unit 2H	0.0	0.0	0.0	14283527.87	1663008.37	39° 20' 2.129 860" 55" 12.371 W	
Actual BHL Chandos Unit 2H	8335.5	-7998.1	2379.214275550.77	1665387.588°	18° 43.025 860" 54" 42.179 W		



Antero Resources  
 Chandos Unit 2H  
 Ritchie County WV  
 Northing: 14283527.87  
 Easting: 1663008.37  
 As Drilled

Chandos Unit 2H GL 968' ± 23" @ 998.0usft  
 Gr: 968.0



Received  
 Office of Oil & Gas  
 SEP 14 2015

10/16/2015

85-10057



## **Antero Resources**

**Ritchie County WV  
Anna Pad  
Chandos Unit 2H  
Original Wellpath**

**Design: As Drilled**

## **EOW Completion Report**

**12 August, 2014**

Received  
Office of Oil & Gas  
SEP 14 2015



10/16/2015

85-10057



EOW Completion Report



<b>Company:</b>	Antero Resources	<b>Local Co-ordinate Reference:</b>	Well Chandos Unit 2H
<b>Project:</b>	Ritchie County WV	<b>TVD Reference:</b>	Chandos Unit 2H GL 968' + 28' @ 996.0usft
<b>Site:</b>	Anna Pad	<b>MD Reference:</b>	Chandos Unit 2H GL 968' + 28' @ 996.0usft
<b>Well:</b>	Chandos Unit 2H	<b>North Reference:</b>	Grid
<b>Wellbore:</b>	Original Wellpath	<b>Survey Calculation Method:</b>	Minimum Curvature
<b>Design:</b>	As Drilled	<b>Database:</b>	Oklahoma District

<b>Project</b>	Ritchie County WV, Ritchie County WV, WV North		
<b>Map System:</b>	Universal Transverse Mercator (US Survey Fee	<b>System Datum:</b>	Mean Sea Level
<b>Geo Datum:</b>	NAD 1927 (NADCON CONUS)		
<b>Map Zone:</b>	Zone 17N (84 W to 78 W)		

<b>Site</b>	Anna Pad		
<b>Site Position:</b>		<b>Northing:</b>	14,283,550.70 usft
<b>From:</b>	Map	<b>Easting:</b>	1,662,998.99 usft
<b>Position Uncertainty:</b>	2.0 usft	<b>Slot Radius:</b>	13-3/16"
		<b>Latitude:</b>	39° 20' 2.355 N
		<b>Longitude:</b>	80° 55' 12.490 W
		<b>Grid Convergence:</b>	0.05 °

<b>Well</b>	Chandos Unit 2H		
<b>Well Position</b>	<b>+N/-S</b>	0.0 usft	<b>Northing:</b> 14,283,527.87 usft
	<b>+E/-W</b>	0.0 usft	<b>Easting:</b> 1,663,008.37 usft
<b>Position Uncertainty</b>	2.0 usft	<b>Wellhead Elevation:</b>	996.0 usft
		<b>Latitude:</b>	39° 20' 2.129 N
		<b>Longitude:</b>	80° 55' 12.371 W
		<b>Ground Level:</b>	968.0 usft

<b>Wellbore</b>	Original Wellpath				
<b>Magnetics</b>	<b>Model Name</b>	<b>Sample Date</b>	<b>Declination (°)</b>	<b>Dip Angle (°)</b>	<b>Field Strength (nT)</b>
	IGRF2010	4/3/2014	-8.38	66.88	52,359

<b>Design</b>	As Drilled			
<b>Audit Notes:</b>				
<b>Version:</b>	1.0	<b>Phase:</b>	ACTUAL	<b>Tie On Depth:</b> 0.0
<b>Vertical Section:</b>	<b>Depth From (TVD) (usft)</b>	<b>+N/-S (usft)</b>	<b>+E/-W (usft)</b>	<b>Direction (°)</b>
	0.0	0.0	0.0	158.04

<b>Survey Program</b>	Date 8/12/2014			
<b>From (usft)</b>	<b>To (usft)</b>	<b>Survey (Wellbore)</b>	<b>Tool Name</b>	<b>Description</b>
117.0	2,422.4	Survey #2 Gyro to Int (Original Wellpath)	SDI Standard Keeper	Scientific Drilling Intl. Standard Wireline Keeper
2,517.0	4,137.2	Survey #4 Gyro to KOP (Original Wellpath)	SDI Standard Keeper	Scientific Drilling Intl. Standard Wireline Keeper
4,142.0	5,828.6	Survey #6 Final Gyro (Original Wellpath)	SDI Standard Keeper	Scientific Drilling Intl. Standard Wireline Keeper
5,896.0	14,485.0	Survey #7 MWD (Original Wellpath)	MWD SDI	MWD - Standard ver 1.0.1

<b>Survey</b>								
<b>MD (usft)</b>	<b>Inc (°)</b>	<b>Azi (azimuth) (°)</b>	<b>TVD (usft)</b>	<b>N/S (usft)</b>	<b>EW (usft)</b>	<b>V. Sec (usft)</b>	<b>DLeg (°/100usft)</b>	
0.0	0.00	0.00	0.0	0.0	0.0	0.0	0.00	
117.0	0.60	226.44	117.0	-0.4	-0.4	0.2	0.57	
217.0	0.51	214.59	217.0	-1.1	-1.1	0.7	0.11	
317.0	0.59	222.87	317.0	-1.9	-1.7	1.1	0.11	
417.0	0.59	226.55	417.0	-2.6	-2.4	1.5	0.02	
517.0	0.57	233.89	517.0	-3.3	-3.2	1.8	0.08	
617.0	0.58	228.08	617.0	-3.9	-4.0	2.1	0.06	
717.0	0.59	229.84	717.0	-4.6	-4.7	2.5	0.02	
817.0	0.58	223.52	817.0	-5.3	-5.5	2.8	0.07	

Received  
Office of Oil & Gas  
SEP 14 2015

85-10057



EOW Completion Report



<b>Company:</b> Antero Resources	<b>Local Co-ordinate Reference:</b> Well Chandos Unit 2H
<b>Project:</b> Ritchie County WV	<b>TVD Reference:</b> Chandos Unit 2H GL 968' + 28' @ 996.0usft
<b>Site:</b> Anna Pad	<b>MD Reference:</b> Chandos Unit 2H GL 968' + 28' @ 996.0usft
<b>Well:</b> Chandos Unit 2H	<b>North Reference:</b> Grid
<b>Wellbore:</b> Original Wellpath	<b>Survey Calculation Method:</b> Minimum Curvature
<b>Design:</b> As Drilled	<b>Database:</b> Oklahoma District

Survey									
MD (usft)	Inc (°)	Azi (azimuth) (°)		TVD (usft)	N/S (usft)	E/W (usft)	V. Sec (usft)	DLeg (°/100usft)	
917.0	0.51	218.62		917.0	-6.0	-6.1	3.3		0.08
1,017.0	0.51	223.57		1,017.0	-6.7	-6.7	3.7		0.04
1,117.0	0.46	226.82		1,117.0	-7.3	-7.3	4.0		0.06
1,217.0	0.38	226.43		1,216.9	-7.8	-7.8	4.3		0.08
1,317.0	0.40	224.28		1,316.9	-8.2	-8.3	4.5		0.02
1,417.0	0.30	224.41		1,416.9	-8.7	-8.7	4.8		0.10
1,517.0	0.28	224.92		1,516.9	-9.0	-9.1	5.0		0.02
1,617.0	0.10	198.21		1,616.9	-9.3	-9.3	5.1		0.20
1,717.0	0.09	202.86		1,716.9	-9.4	-9.3	5.3		0.01
1,817.0	0.07	316.71		1,816.9	-9.5	-9.4	5.3		0.13
1,917.0	0.13	238.88		1,916.9	-9.5	-9.5	5.2		0.13
2,017.0	0.08	248.92		2,016.9	-9.6	-9.7	5.2		0.05
2,117.0	0.15	229.68		2,116.9	-9.7	-9.9	5.3		0.08
2,217.0	0.04	248.25		2,216.9	-9.8	-10.0	5.3		0.11
2,317.0	0.19	237.18		2,316.9	-9.9	-10.2	5.4		0.15
2,417.0	0.23	165.47		2,416.9	-10.2	-10.3	5.6		0.25
2,422.4	0.26	168.87		2,422.4	-10.2	-10.3	5.6		0.61
2,517.0	2.32	138.89		2,516.9	-11.8	-9.0	7.6		2.22
2,617.0	5.82	116.76		2,616.6	-15.6	-3.1	13.4		3.77
2,717.0	4.88	120.03		2,716.2	-20.1	5.1	20.5		0.99
2,817.0	3.16	120.62		2,816.0	-23.6	11.2	26.1		1.72
2,917.0	1.71	120.54		2,915.9	-25.8	14.8	29.4		1.45
3,017.0	1.19	119.58		3,015.8	-27.0	17.0	31.4		0.52
3,117.0	0.85	121.85		3,115.8	-27.9	18.5	32.8		0.34
3,217.0	0.40	131.27		3,215.8	-28.6	19.4	33.7		0.46
3,317.0	0.33	144.73		3,315.8	-29.0	19.9	34.3		0.11
3,417.0	0.19	134.74		3,415.8	-29.4	20.1	34.8		0.15
3,517.0	0.18	113.27		3,515.8	-29.5	20.4	35.0		0.07
3,617.0	0.22	58.64		3,615.8	-29.5	20.7	35.1		0.19
3,717.0	0.13	30.57		3,715.8	-29.3	20.9	35.0		0.12
3,817.0	0.20	109.29		3,815.8	-29.3	21.2	35.1		0.22
3,917.0	0.32	62.23		3,915.8	-29.2	21.6	35.1		0.23
4,017.0	0.34	44.62		4,015.8	-28.9	22.0	35.0		0.10
4,117.0	0.59	82.66		4,115.8	-28.6	22.7	35.0		0.38
4,137.2	0.62	81.94		4,136.0	-28.6	23.0	35.1		0.15
4,142.0	0.35	79.67		4,140.8	-28.5	23.0	35.1		5.66
4,242.0	2.56	260.75		4,240.8	-28.9	21.1	34.6		2.91
4,342.0	7.17	248.42		4,340.4	-31.5	13.1	34.1		4.70
4,442.0	9.73	244.88		4,439.3	-37.4	-0.4	34.5		2.61
4,542.0	11.94	244.48		4,537.5	-45.4	-17.4	35.6		2.21
4,642.0	12.58	236.78		4,635.2	-55.9	-35.8	38.4		1.75
4,742.0	14.21	235.91		4,732.5	-68.7	-55.1	43.1		1.64
4,842.0	15.88	238.81		4,829.1	-82.7	-77.0	47.9		1.83
4,942.0	18.88	243.22		4,924.5	-97.1	-103.1	51.4		3.27

Received  
Office of Oil & Gas  
SEP 14 2015

<b>Company:</b> Antero Resources	<b>Local Co-ordinate Reference:</b> Well Chandos Unit 2H
<b>Project:</b> Ritchie County WV	<b>TVD Reference:</b> Chandos Unit 2H GL 968' + 28' @ 996.0usft
<b>Site:</b> Anna Pad	<b>MD Reference:</b> Chandos Unit 2H GL 968' + 28' @ 996.0usft
<b>Well:</b> Chandos Unit 2H	<b>North Reference:</b> Grid
<b>Wellbore:</b> Original Wellpath	<b>Survey Calculation Method:</b> Minimum Curvature
<b>Design:</b> As Drilled	<b>Database:</b> Oklahoma District

Survey							
MD (usft)	Inc (°)	Azi (azimuth) (°)	TVD (usft)	N/S (usft)	EW (usft)	V. Sec (usft)	DLeg (°/100usft)
5,042.0	22.00	244.19	5,018.2	-112.5	-134.4	54.1	3.14
5,142.0	24.34	243.85	5,110.1	-129.7	-169.8	56.8	2.34
5,242.0	25.16	243.08	5,200.9	-148.4	-207.2	60.2	0.88
5,342.0	24.84	241.48	5,291.6	-168.1	-244.7	64.4	0.75
5,442.0	23.70	237.94	5,382.7	-188.8	-280.1	70.3	1.85
5,542.0	21.86	242.28	5,474.9	-208.1	-313.7	75.7	2.49
5,642.0	23.59	247.41	5,567.2	-224.5	-348.6	77.8	2.63
5,742.0	24.65	249.80	5,658.5	-239.4	-386.7	77.4	1.44
5,828.6	27.02	245.06	5,736.4	-253.9	-421.5	77.9	3.63
5,896.0	25.85	242.79	5,796.8	-267.1	-448.4	80.0	2.30
5,928.0	25.24	242.51	5,825.6	-273.4	-460.7	81.3	1.94
5,960.0	24.80	241.89	5,854.6	-279.7	-472.6	82.7	1.60
5,992.0	25.94	244.09	5,883.5	-285.9	-484.9	83.9	4.62
6,024.0	27.26	240.58	5,912.2	-292.6	-497.5	85.3	6.41
6,055.0	28.93	232.58	5,939.5	-300.6	-509.7	88.2	13.28
6,087.0	30.95	225.55	5,967.2	-311.1	-521.7	93.4	12.64
6,119.0	33.15	218.69	5,994.4	-323.7	-533.1	100.9	13.28
6,150.0	35.53	211.75	6,020.0	-338.0	-543.1	110.4	14.77
6,164.0	36.41	208.79	6,031.3	-345.1	-547.2	115.4	13.93
<b>Sycamore</b>							
6,182.0	37.64	205.16	6,045.7	-354.8	-552.2	122.5	13.93
6,213.0	39.75	198.74	6,069.9	-372.7	-559.4	136.5	14.62
6,245.0	41.33	192.68	6,094.2	-392.7	-565.0	153.0	13.26
6,277.0	43.09	188.02	6,117.9	-413.9	-568.8	171.1	11.22
6,295.0	44.51	186.20	6,130.9	-426.2	-570.4	182.0	10.54
<b>Middlesex</b>							
6,308.0	45.55	184.94	6,140.1	-435.4	-571.3	190.2	10.54
6,339.0	48.45	182.30	6,161.2	-458.0	-572.7	210.6	11.24
6,371.0	51.27	180.02	6,181.9	-482.5	-573.2	233.1	10.36
6,403.0	54.34	177.91	6,201.2	-507.9	-572.7	256.9	10.94
6,434.0	57.51	176.33	6,218.6	-533.6	-571.4	281.2	11.06
6,466.0	60.50	174.66	6,235.1	-560.9	-569.2	307.4	10.36
6,498.0	62.78	173.08	6,250.3	-588.9	-566.2	334.4	8.34
6,530.0	65.51	170.79	6,264.2	-617.4	-562.2	362.4	10.69
6,535.0	66.08	170.45	6,266.3	-621.9	-561.4	366.8	10.04
<b>Tully</b>							
6,562.0	69.20	168.68	6,276.5	-646.5	-556.9	391.3	13.04
6,593.0	72.55	167.28	6,286.7	-675.1	-550.8	420.2	11.62
6,609.0	74.39	166.44	6,291.2	-690.0	-547.3	435.3	12.58
<b>Marcellus</b>							
6,625.0	76.24	165.61	6,295.3	-705.1	-543.6	450.6	12.58
6,657.0	79.49	164.73	6,302.0	-735.3	-535.6	481.7	10.51
6,689.0	82.39	163.14	6,307.1	-765.7	-526.8	513.1	10.31
6,720.0	85.21	161.47	6,310.4	-795.0	-517.5	543.8	10.56
6,767.0	88.64	158.66	6,312.9	-839.1	-501.5	590.7	9.43

Received  
Office of Oil & Gas  
SEP 14 2015

85-10057



EOW Completion Report



<b>Company:</b> Antero Resources	<b>Local Co-ordinate Reference:</b> Well Chandos Unit 2H
<b>Project:</b> Ritchie County WV	<b>TVD Reference:</b> Chandos Unit 2H GL 968' + 28' @ 996.0usft
<b>Site:</b> Anna Pad	<b>MD Reference:</b> Chandos Unit 2H GL 968' + 28' @ 996.0usft
<b>Well:</b> Chandos Unit 2H	<b>North Reference:</b> Grid
<b>Wellbore:</b> Original Wellpath	<b>Survey Calculation Method:</b> Minimum Curvature
<b>Design:</b> As Drilled	<b>Database:</b> Oklahoma District

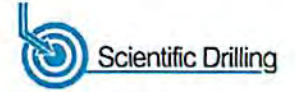
Survey							
MD (usft)	Inc (°)	Azi (azimuth) (°)	TVD (usft)	N/S (usft)	EW (usft)	V. Sec (usft)	DLeg (°/100usft)
6,831.0	89.60	157.87	6,313.9	-898.6	-477.8	654.7	1.94
6,927.0	90.22	156.11	6,314.1	-986.9	-440.2	750.7	1.94
7,021.0	90.84	158.66	6,313.2	-1,073.7	-404.1	844.7	2.79
7,116.0	91.28	158.40	6,311.4	-1,162.1	-369.3	939.7	0.54
7,211.0	88.72	156.73	6,311.4	-1,249.9	-333.1	1,034.6	3.22
7,306.0	89.60	157.34	6,312.8	-1,337.3	-296.0	1,129.6	1.13
7,402.0	89.83	157.57	6,313.3	-1,426.0	-259.2	1,225.6	0.34
7,498.0	89.34	157.78	6,314.0	-1,514.8	-222.7	1,321.6	0.56
7,594.0	89.16	158.75	6,315.3	-1,604.0	-187.2	1,417.6	1.03
7,688.0	89.69	159.10	6,316.2	-1,691.7	-153.4	1,511.6	0.68
7,783.0	90.13	159.19	6,316.4	-1,780.5	-119.6	1,606.6	0.47
7,879.0	89.08	157.52	6,317.0	-1,869.7	-84.2	1,702.6	2.05
7,973.0	89.78	157.43	6,317.9	-1,956.5	-48.2	1,796.5	0.75
8,069.0	90.66	157.08	6,317.6	-2,045.0	-11.0	1,892.5	0.99
8,164.0	90.31	158.57	6,316.8	-2,133.0	24.8	1,987.5	1.61
8,259.0	89.34	159.54	6,317.1	-2,221.7	58.8	2,082.5	1.44
8,354.0	90.48	159.45	6,317.2	-2,310.7	92.0	2,177.5	1.20
8,450.0	90.13	158.66	6,316.7	-2,400.4	126.4	2,273.5	0.90
8,546.0	88.11	158.32	6,318.2	-2,489.7	161.6	2,369.4	2.13
8,641.0	88.72	158.40	6,320.8	-2,577.9	196.6	2,464.4	0.65
8,736.0	88.99	157.43	6,322.7	-2,665.9	232.3	2,559.4	1.06
8,831.0	90.92	158.84	6,322.8	-2,754.1	267.7	2,654.4	2.52
8,927.0	90.31	158.84	6,321.7	-2,843.6	302.3	2,750.4	0.64
9,021.0	90.22	158.93	6,321.3	-2,931.3	336.2	2,844.3	0.14
9,116.0	90.84	159.19	6,320.4	-3,020.0	370.1	2,939.3	0.71
9,207.0	90.04	158.66	6,319.7	-3,104.9	402.8	3,030.3	1.05
9,297.0	90.04	158.66	6,319.7	-3,188.8	435.6	3,120.3	0.00
9,387.0	89.87	157.52	6,319.7	-3,272.3	469.2	3,210.3	1.28
9,477.0	89.34	156.46	6,320.4	-3,355.1	504.4	3,300.3	1.32
9,567.0	89.34	156.29	6,321.4	-3,437.6	540.4	3,390.2	0.19
9,658.0	88.81	157.26	6,322.9	-3,521.2	576.3	3,481.2	1.21
9,748.0	89.87	158.13	6,323.9	-3,604.4	610.5	3,571.2	1.52
9,839.0	89.52	158.66	6,324.4	-3,689.0	644.0	3,662.2	0.70
9,929.0	89.69	158.57	6,325.0	-3,772.8	676.8	3,752.2	0.21
10,019.0	88.99	156.99	6,326.1	-3,856.1	710.8	3,842.2	1.92
10,109.0	89.34	156.90	6,327.4	-3,938.9	746.1	3,932.1	0.40
10,201.0	89.52	155.94	6,328.3	-4,023.3	782.9	4,024.1	1.06
10,295.0	91.01	157.08	6,327.8	-4,109.5	820.3	4,118.1	2.99
10,390.0	90.22	157.87	6,326.8	-4,197.2	856.7	4,213.1	1.18
10,484.0	89.60	157.96	6,327.0	-4,284.3	892.1	4,307.1	0.67
10,579.0	90.57	158.57	6,326.8	-4,372.6	927.2	4,402.1	1.21
10,672.0	90.57	158.66	6,325.9	-4,459.1	961.1	4,495.0	0.10
10,766.0	91.01	158.57	6,324.6	-4,546.7	995.4	4,589.0	0.48
10,861.0	90.40	159.01	6,323.4	-4,635.2	1,029.8	4,684.0	0.79

Received  
Office of Oil & Gas  
SEP 14 2014

85-10057



EOW Completion Report



<b>Company:</b>	Antero Resources	<b>Local Co-ordinate Reference:</b>	Well Chandos Unit 2H
<b>Project:</b>	Ritchie County WV	<b>TVD Reference:</b>	Chandos Unit 2H GL 968' + 28' @ 996.0usft
<b>Site:</b>	Anna Pad	<b>MD Reference:</b>	Chandos Unit 2H GL 968' + 28' @ 996.0usft
<b>Well:</b>	Chandos Unit 2H	<b>North Reference:</b>	Grid
<b>Wellbore:</b>	Original Wellpath	<b>Survey Calculation Method:</b>	Minimum Curvature
<b>Design:</b>	As Drilled	<b>Database:</b>	Oklahoma District

Survey								
MD (usft)	Inc (°)	Azi (azimuth) (°)		TVD (usft)	N/S (usft)	E/W (usft)	V. Sec (usft)	DLeg (°/100usft)
10,955.0	89.60	159.37	159.37	6,323.4	-4,723.1	1,063.2	4,778.0	0.93
11,049.0	90.40	159.01	159.01	6,323.4	-4,811.0	1,096.6	4,872.0	0.93
11,143.0	90.22	158.66	158.66	6,322.9	-4,898.6	1,130.5	4,966.0	0.42
11,237.0	89.87	157.78	157.78	6,322.9	-4,985.9	1,165.4	5,060.0	1.01
11,331.0	88.37	157.08	157.08	6,324.3	-5,072.7	1,201.5	5,153.9	1.76
11,425.0	88.64	157.87	157.87	6,326.8	-5,159.5	1,237.5	5,247.9	0.89
11,519.0	89.25	157.78	157.78	6,328.5	-5,246.5	1,272.9	5,341.9	0.66
11,613.0	90.13	157.61	157.61	6,329.0	-5,333.5	1,308.6	5,435.9	0.95
11,708.0	89.96	157.61	157.61	6,328.9	-5,421.3	1,344.8	5,530.9	0.18
11,802.0	89.87	157.70	157.70	6,329.1	-5,508.3	1,380.5	5,624.9	0.14
11,897.0	89.52	158.05	158.05	6,329.6	-5,596.3	1,416.3	5,719.9	0.52
11,992.0	89.87	158.75	158.75	6,330.1	-5,684.6	1,451.3	5,814.9	0.82
12,086.0	91.19	158.84	158.84	6,329.2	-5,772.2	1,485.3	5,908.9	1.41
12,181.0	91.63	158.49	158.49	6,326.9	-5,860.7	1,519.8	6,003.8	0.59
12,275.0	89.78	158.93	158.93	6,325.7	-5,948.3	1,554.0	6,097.8	2.02
12,369.0	89.87	158.22	158.22	6,326.0	-6,035.8	1,588.3	6,191.8	0.76
12,464.0	89.78	157.67	157.67	6,326.3	-6,123.8	1,624.0	6,286.8	0.59
12,558.0	90.40	157.34	157.34	6,326.1	-6,210.7	1,659.9	6,380.8	0.75
12,652.0	88.99	156.46	156.46	6,326.6	-6,297.1	1,696.8	6,474.8	1.77
12,746.0	89.34	157.70	157.70	6,328.0	-6,383.7	1,733.4	6,568.7	1.37
12,840.0	90.13	157.87	157.87	6,328.4	-6,470.7	1,768.9	6,662.7	0.86
12,935.0	90.84	157.70	157.70	6,327.6	-6,558.7	1,804.9	6,757.7	0.77
13,029.0	89.52	156.99	156.99	6,327.3	-6,645.4	1,841.1	6,851.7	1.59
13,123.0	89.16	157.17	157.17	6,328.4	-6,732.0	1,877.7	6,945.7	0.43
13,218.0	89.52	158.84	158.84	6,329.5	-6,820.0	1,913.3	7,040.7	1.80
13,312.0	90.57	159.37	159.37	6,329.4	-6,907.9	1,946.8	7,134.7	1.25
13,406.0	90.31	159.63	159.63	6,328.7	-6,995.9	1,979.7	7,228.6	0.39
13,500.0	88.90	159.45	159.45	6,329.4	-7,084.0	2,012.6	7,322.6	1.51
13,594.0	89.16	158.66	158.66	6,331.0	-7,171.7	2,046.2	7,416.6	0.88
13,648.0	89.43	158.31	158.31	6,331.6	-7,222.0	2,066.0	7,470.6	0.82
13,782.0	89.69	158.05	158.05	6,332.7	-7,346.4	2,115.8	7,604.6	0.27
13,876.0	89.87	157.87	157.87	6,333.0	-7,433.5	2,151.0	7,698.6	0.27
13,970.0	90.31	157.34	157.34	6,332.9	-7,520.4	2,186.8	7,792.6	0.73
14,065.0	89.52	158.57	158.57	6,333.0	-7,608.5	2,222.5	7,887.6	1.54
14,159.0	89.78	157.87	157.87	6,333.6	-7,695.8	2,257.4	7,981.6	0.79
14,253.0	89.16	159.10	159.10	6,334.5	-7,783.2	2,291.8	8,075.6	1.47
14,347.0	89.43	158.05	158.05	6,335.6	-7,870.7	2,326.2	8,169.6	1.15
14,431.0	90.30	157.11	157.11	6,335.8	-7,948.3	2,358.2	8,263.6	0.52
14,485.0	90.30	157.11	157.11	6,335.5	-7,998.1	2,379.2	8,307.5	0.00

Received  
Office of Oil & Gas  
SEP 14 2015

85-10057



EOW Completion Report



<b>Company:</b>	Antero Resources	<b>Local Co-ordinate Reference:</b>	Well Chandos Unit 2H
<b>Project:</b>	Ritchie County WV	<b>TVD Reference:</b>	Chandos Unit 2H GL 968' + 28' @ 996.0usft
<b>Site:</b>	Anna Pad	<b>MD Reference:</b>	Chandos Unit 2H GL 968' + 28' @ 996.0usft
<b>Well:</b>	Chandos Unit 2H	<b>North Reference:</b>	Grid
<b>Wellbore:</b>	Original Wellpath	<b>Survey Calculation Method:</b>	Minimum Curvature
<b>Design:</b>	As Drilled	<b>Database:</b>	Oklahoma District

Design Annotations				
Measured Depth (usft)	Vertical Depth (usft)	Local Coordinates		Comment
		+N/-S (usft)	+E/-W (usft)	
6,164.0	6,031.3	-345.1	-547.2	Sycamore
6,295.0	6,130.9	-426.2	-570.4	Middlesex
6,535.0	6,266.3	-621.9	-561.4	Tully
6,609.0	6,291.2	-690.0	-547.3	Marcellus

Checked By: \_\_\_\_\_ Approved By: \_\_\_\_\_ Date: \_\_\_\_\_

Received  
Office of Oil & Gas  
SEP 14 2015