

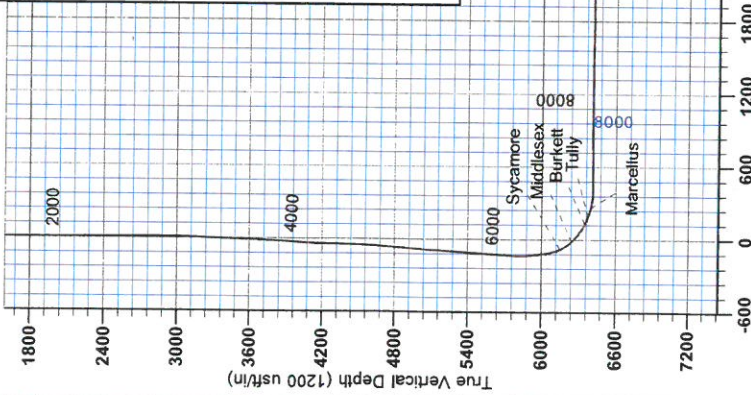
RECEIVED

JUN 15 2015

WV GEOLOGICAL SURVEY
MORGANTOWN, WV



Antero Resources
Hendershot Unit 1H
Ritchie County WV
Northing: 14270988.12
Easting: 1650704.41
As Drilled



WELL DETAILS: Hendershot Unit 1H
 Ground Level: 1117.0
 Slot
 Ending: 1650704.41 39° 17' 58.219 N 80° 57' 49.064 W
 Longitude
 Starting: 14270988.12 39° 17' 58.219 N 80° 57' 49.064 W
 Latitude

REFERENCE INFORMATION
 Contour Interval: Well Hendershot Unit 1H, One Meter
 Vertical (TVD) Reference: SHL 1650704.41, 1117.0, 1117.0, 1117.0
 Station (US) Reference: SHL 1650704.41, 1117.0, 1117.0, 1117.0
 Minimum Calculation Method: Minimum Curvature

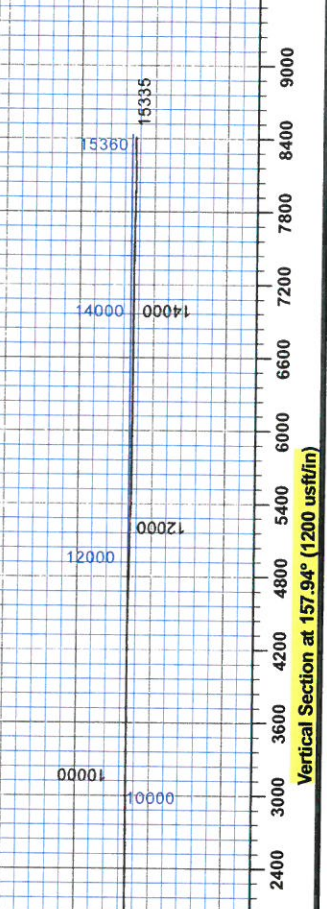
PROJECT DETAILS: Ritchie County WV
 Geographic System: Universal Transverse Mercator (US Survey Feet)
 Datum: NAD 1983 (NAD80 CONUS)
 Ellipsoid: Clarke 1866
 Zone: Zone 17N (84 W to 78 W)
 System Datum: Mean Sea Level

Genie Lightfoot
 13:05, June 16 2014
 Scientific Drilling
 421 South Eagle Lane
 Oklahoma City, OK



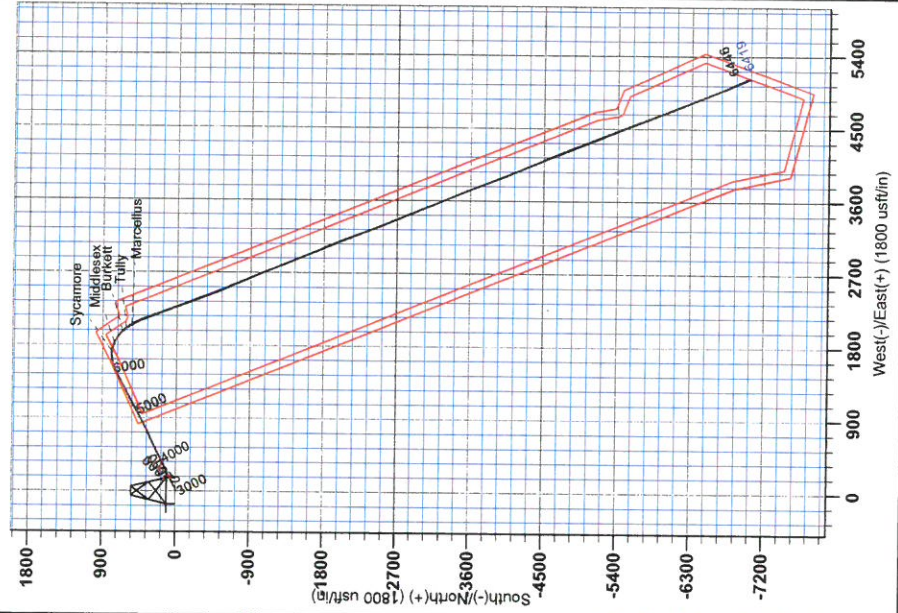
LEGEND
 □ Hendershot Unit 1H, Original Wellpath, Plan 7 V0
 □ As Drilled

DESIGN TARGET DETAILS			
Name	TVD	+N/S	+E/W
SHL Hendershot Unit 1	0.0	0.0	0.0
Actual BHL Hendershot Unit	4486.5	-6997.1	5124.01426599103
			1655628.3839 16 49 008 W0 56 43.933 W



To convert Magnetic North to Grid, Subtract 8.42°
 True North: -0.02°
 Magnetic North: -8.42°

Magnetic Field
 Strength: 48680
 Dip Angle: 68.80°
 Date: 4/15/2014
 Model: BCGM2013





RECEIVED
JUN 15 2015
WV GEOLOGICAL SURVEY
MORGANTOWN, WV

Antero Resources

**Ritchie County WV
Hendershot/Paige/Eppard/Brook/Bow
Hendershot Unit 1H
Original Wellpath**

Design: As Drilled

EOW Completion Report

16 June, 2014



JUN 15 2015



EOW Completion Report



Company:	Antero Resources	Local Co-ordinate Reference:	Well Hendershot Unit 1H
Project:	Ritchie County WV	TVD Reference:	Hendershot Unit 1H GL 1117 + 23 RKB @ 1140.0
Site:	Hendershot/Paige/Eppard/Brook/Bow	MD Reference:	Hendershot Unit 1H GL 1117 + 23 RKB @ 1140.0
Well:	Hendershot Unit 1H	North Reference:	Grid
Wellbore:	Original Wellpath	Survey Calculation Method:	Minimum Curvature
Design:	As Drilled	Database:	Oklahoma District

Project	Ritchie County WV, Ritchie County WV, WV North		
Map System:	Universal Transverse Mercator (US Survey Fee	System Datum:	Mean Sea Level
Geo Datum:	NAD 1927 (NADCON CONUS)		
Map Zone:	Zone 17N (84 W to 78 W)		

Site	Hendershot/Paige/Eppard/Brook/Bow, SHL Hendershot Unit 1H				
Site Position:		Northing:	14,270,988.12 usft	Latitude:	39° 17' 58.219 N
From:	Map	Easting:	1,650,704.41 usft	Longitude:	80° 57' 49.084 W
Position Uncertainty:	2.0 usft	Slot Radius:	13-3/16"	Grid Convergence:	0.02 °

Well	Hendershot Unit 1H, Marcellus					
Well Position	+N/-S	0.0 usft	Northing:	14,270,988.12 usft	Latitude:	39° 17' 58.219 N
	+E/-W	0.0 usft	Easting:	1,650,704.41 usft	Longitude:	80° 57' 49.084 W
Position Uncertainty		2.0 usft	Wellhead Elevation:	1,140.0 usft	Ground Level:	1,117.0 usft

Wellbore	Original Wellpath
-----------------	-------------------

Magnetics	Model Name	Sample Date	Declination (°)	Dip Angle (°)	Field Strength (nT)
	BGGM2013	4/15/2014	-8.40	66.89	52,300

Design	As Drilled
---------------	------------

Audit Notes:

Version:	1.0	Phase:	ACTUAL	Tie On Depth:	0.0
-----------------	-----	---------------	--------	----------------------	-----

Vertical Section:	Depth From (TVD) (usft)	+N/-S (usft)	+E/-W (usft)	Direction (°)
	0.0	0.0	0.0	157.94

Survey Program	From (usft)	To (usft)	Date	Survey (Wellbore)	Tool Name	Description
	100.0	6,080.0	6/16/2014	Survey #3 Def Gyro to KOP (Original Well	SDI Standard Keeper	Scientific Drilling Intl. Standard Wireline Keeper
	6,167.0	15,335.0		Survey #4 MWD (Original Wellpath)	SDI MWD	Scientific Drilling Intl. MWD - Standard ver 1.0.1

Survey	MD (usft)	Inc (°)	Azi (azimuth) (°)	TVD (usft)	N/S (usft)	E/W (usft)	V. Sec (usft)	DLeg (°/100usft)
	0.0	0.00	0.00	0.0	0.0	0.0	0.0	0.00
	100.0	0.33	7.46	100.0	0.3	0.0	-0.3	0.33
	200.0	0.33	72.88	200.0	0.7	0.3	-0.5	0.36
	300.0	0.41	115.26	300.0	0.6	0.9	-0.2	0.28
	400.0	0.33	114.92	400.0	0.3	1.5	0.3	0.08
	500.0	0.26	113.42	500.0	0.1	2.0	0.7	0.07
	600.0	0.22	114.14	600.0	-0.1	2.4	1.0	0.04
	700.0	0.19	92.92	700.0	-0.2	2.7	1.2	0.08
	800.0	0.16	140.89	800.0	-0.3	3.0	1.4	0.14
	900.0	0.26	145.95	900.0	-0.6	3.2	1.7	0.10
	1,000.0	0.24	131.62	1,000.0	-0.9	3.5	2.1	0.07

JUN 15 2015



WV GEOLOGICAL SURVEY EOW Completion Report
MORGANTOWN, WV



Company:	Antero Resources	Local Co-ordinate Reference:	Well Hendershot Unit 1H
Project:	Ritchie County WV	TVD Reference:	Hendershot Unit 1H GL 1117 + 23 RKB @ 1140.0
Site:	Hendershot/Paige/Eppard/Brook/Bow	MD Reference:	Hendershot Unit 1H GL 1117 + 23 RKB @ 1140.0
Well:	Hendershot Unit 1H	North Reference:	Grid
Wellbore:	Original Wellpath	Survey Calculation Method:	Minimum Curvature
Design:	As Drilled	Database:	Oklahoma District

Survey

MD (usft)	Inc (°)	Azi (azimuth) (°)	TVD (usft)	N/S (usft)	E/W (usft)	V. Sec (usft)	DLeg (°/100usft)
1,100.0	0.17	161.97	1,100.0	-1.2	3.7	2.5	0.13
1,200.0	0.19	147.51	1,200.0	-1.5	3.8	2.8	0.05
1,300.0	0.20	155.67	1,300.0	-1.8	4.0	3.1	0.03
1,400.0	0.17	180.55	1,400.0	-2.1	4.0	3.4	0.08
1,500.0	0.21	150.65	1,500.0	-2.4	4.1	3.7	0.11
1,600.0	0.16	166.52	1,600.0	-2.7	4.3	4.1	0.07
1,700.0	0.26	182.74	1,700.0	-3.0	4.3	4.4	0.12
1,800.0	0.17	190.63	1,800.0	-3.4	4.2	4.7	0.09
1,900.0	0.19	178.55	1,900.0	-3.7	4.2	5.0	0.04
2,000.0	0.17	139.69	2,000.0	-4.0	4.3	5.3	0.12
2,100.0	0.29	169.04	2,100.0	-4.4	4.5	5.7	0.16
2,200.0	0.13	179.51	2,200.0	-4.7	4.5	6.1	0.16
2,300.0	0.18	181.10	2,300.0	-5.0	4.5	6.3	0.05
2,400.0	0.12	159.92	2,400.0	-5.2	4.5	6.6	0.08
2,500.0	0.05	284.30	2,500.0	-5.3	4.5	6.6	0.15
2,600.0	0.05	57.10	2,600.0	-5.3	4.5	6.6	0.09
2,700.0	2.41	102.72	2,700.0	-5.7	6.6	7.8	2.38
2,800.0	5.47	77.62	2,799.7	-5.2	13.3	9.8	3.44
2,900.0	6.79	68.73	2,899.1	-2.0	23.5	10.7	1.62
3,000.0	9.19	62.77	2,998.2	3.8	36.1	10.0	2.54
3,100.0	11.82	59.70	3,096.5	12.6	52.1	7.9	2.69
3,200.0	14.46	59.35	3,193.9	24.2	71.6	4.5	2.64
3,300.0	16.91	60.38	3,290.1	37.7	95.0	0.7	2.47
3,400.0	20.16	61.54	3,384.9	53.1	122.8	-3.1	3.27
3,500.0	22.53	62.55	3,478.1	70.2	155.0	-6.8	2.40
3,600.0	26.09	64.41	3,569.2	88.5	191.8	-10.0	3.64
3,700.0	29.18	65.60	3,657.8	108.1	233.9	-12.3	3.14
3,800.0	33.25	65.02	3,743.3	129.7	280.9	-14.7	4.08
3,900.0	35.38	63.64	3,825.9	154.2	331.7	-18.3	2.27
4,000.0	32.96	61.64	3,908.6	179.9	381.6	-23.4	2.67
4,100.0	32.84	61.28	3,992.5	205.9	429.3	-29.6	0.23
4,200.0	32.24	61.15	4,076.9	231.8	476.5	-35.9	0.60
4,300.0	31.79	64.51	4,161.6	256.0	523.6	-40.6	1.84
4,400.0	33.53	67.38	4,245.8	278.0	572.9	-42.4	2.33
4,500.0	35.49	66.74	4,328.2	300.0	625.1	-43.3	1.99
4,600.0	33.07	64.55	4,410.9	323.2	676.4	-45.5	2.72
4,700.0	35.17	66.04	4,493.6	346.7	727.3	-48.1	2.26
4,800.0	33.11	63.38	4,576.4	370.6	778.1	-51.2	2.54
4,900.0	36.74	62.80	4,658.4	396.5	829.1	-56.1	3.65
5,000.0	34.59	60.69	4,739.6	424.1	880.5	-62.3	2.48
5,100.0	36.63	61.79	4,820.9	452.1	931.5	-69.1	2.14
5,200.0	33.93	60.05	4,902.6	480.1	982.0	-76.2	2.88
5,300.0	33.64	64.54	4,985.7	506.0	1,031.2	-81.6	2.51
5,400.0	32.38	62.81	5,069.5	530.1	1,080.0	-85.7	1.57

JUN 15 2015



WV GEOLOGICAL SURVEY EOW Completion Report
MORGANTOWN, WV



Company:	Antero Resources	Local Co-ordinate Reference:	Well Hendershot Unit 1H
Project:	Ritchie County WV	TVD Reference:	Hendershot Unit 1H GL 1117 + 23 RKB @ 1140.0
Site:	Hendershot/Paige/Eppard/Brook/Bow	MD Reference:	Hendershot Unit 1H GL 1117 + 23 RKB @ 1140.0
Well:	Hendershot Unit 1H	North Reference:	Grid
Wellbore:	Original Wellpath	Survey Calculation Method:	Minimum Curvature
Design:	As Drilled	Database:	Oklahoma District

Survey

MD (usft)	Inc (°)	Azi (azimuth) (°)	TVD (usft)	N/S (usft)	E/W (usft)	V. Sec (usft)	DLeg (°/100usft)
5,500.0	34.57	61.61	5,153.0	555.8	1,128.8	-91.2	2.29
5,600.0	33.41	60.71	5,235.9	582.8	1,177.8	-97.8	1.26
5,700.0	33.23	62.66	5,319.4	608.9	1,226.2	-103.8	1.09
5,800.0	31.98	62.08	5,403.7	633.8	1,273.9	-109.0	1.29
5,900.0	31.24	60.96	5,488.8	658.8	1,320.0	-114.9	0.94
6,000.0	31.89	63.77	5,574.0	683.1	1,366.3	-119.9	1.61
6,080.0	28.93	62.45	5,643.0	701.4	1,402.4	-123.3	3.79
6,167.0	31.78	60.67	5,718.1	722.3	1,441.1	-128.2	3.43
6,231.0	31.35	60.58	5,772.6	738.8	1,470.3	-132.5	0.68
6,262.0	30.96	64.24	5,799.2	746.2	1,484.5	-134.0	6.24
6,294.0	31.33	68.53	5,826.5	752.8	1,499.6	-134.5	7.03
6,326.0	31.56	72.32	5,853.8	758.4	1,515.4	-133.8	6.22
6,358.0	31.05	74.08	5,881.2	763.2	1,531.3	-132.2	3.27
6,389.0	30.78	75.75	5,907.8	767.4	1,546.7	-130.3	2.90
6,421.0	31.04	78.21	5,935.2	771.1	1,562.7	-127.7	4.03
6,453.0	31.53	79.84	5,962.6	774.2	1,579.0	-124.5	3.06
6,484.0	31.02	80.67	5,989.1	777.0	1,594.8	-121.1	2.15
6,516.0	32.75	81.54	6,016.3	779.6	1,611.5	-117.2	5.59
6,547.0	35.78	81.81	6,041.9	782.1	1,628.8	-113.1	9.79
6,578.0	38.93	82.01	6,066.5	784.7	1,647.4	-108.6	10.17
6,610.0	40.40	84.24	6,091.1	787.2	1,667.7	-103.2	6.39
6,641.0	42.12	89.62	6,114.5	788.3	1,688.1	-96.5	12.72
6,674.0	43.78	95.31	6,138.6	787.3	1,710.6	-87.2	12.78
6,692.0	44.79	98.13	6,151.5	785.8	1,723.0	-81.1	12.32
Sycamore							
6,706.0	45.63	100.26	6,161.4	784.2	1,732.8	-76.0	12.32
6,737.0	47.60	103.26	6,182.7	779.6	1,754.9	-63.4	9.48
6,769.0	49.62	107.76	6,203.8	773.2	1,778.0	-48.8	12.29
6,800.0	50.28	109.70	6,223.8	765.6	1,800.5	-33.3	5.24
6,832.0	51.71	112.81	6,243.9	756.5	1,823.6	-16.2	8.77
6,833.0	51.79	112.94	6,244.5	756.2	1,824.4	-15.7	12.53
Middlesex							
6,864.0	54.19	116.76	6,263.2	745.8	1,846.8	2.4	12.53
6,896.0	56.12	121.32	6,281.5	733.1	1,869.8	22.8	13.16
6,927.0	58.22	124.95	6,298.3	718.8	1,891.6	44.2	11.94
6,958.0	60.36	128.31	6,314.1	702.9	1,912.9	67.0	11.60
6,990.0	62.05	130.61	6,329.5	685.1	1,934.6	91.6	8.22
7,022.0	63.49	133.71	6,344.2	666.0	1,955.7	117.3	9.72
7,038.0	65.28	134.93	6,351.1	655.9	1,966.0	130.5	13.11
Burkett							
7,053.0	66.96	136.04	6,357.2	646.1	1,975.6	143.1	13.11
7,084.0	70.39	138.07	6,368.5	625.0	1,995.3	170.1	12.63
7,104.0	72.29	140.59	6,374.9	610.6	2,007.6	188.1	15.23
Tully							
7,116.0	73.44	142.07	6,378.4	601.7	2,014.8	199.1	15.23



Company:	Antero Resources	Local Co-ordinate Reference:	Well Hendershot Unit 1H
Project:	Ritchie County WV	TVD Reference:	Hendershot Unit 1H GL 1117 + 23 RKB @ 1140.0
Site:	Hendershot/Paige/Eppard/Brook/Bow	MD Reference:	Hendershot Unit 1H GL 1117 + 23 RKB @ 1140.0
Well:	Hendershot Unit 1H	North Reference:	Grid
Wellbore:	Original Wellpath	Survey Calculation Method:	Minimum Curvature
Design:	As Drilled	Database:	Oklahoma District

Survey

MD (usft)	Inc (°)	Azi (azimuth) (°)	TVD (usft)	N/S (usft)	E/W (usft)	V. Sec (usft)	DLeg (°/100usft)
7,148.0	74.26	146.62	6,387.3	576.7	2,032.7	228.9	13.90
7,179.0	75.30	148.88	6,395.4	551.4	2,048.6	258.4	7.79
7,183.0	75.55	149.00	6,396.4	548.1	2,050.6	262.2	6.84
Marcellus							
7,211.0	77.29	149.82	6,403.0	524.7	2,064.5	289.1	6.84
7,243.0	81.23	150.88	6,409.0	497.4	2,080.0	320.3	12.74
7,275.0	84.48	153.69	6,413.0	469.3	2,094.8	351.9	13.38
7,289.0	86.20	155.12	6,414.1	456.7	2,100.8	365.8	15.96
7,336.0	90.10	158.86	6,415.6	413.4	2,119.2	412.7	11.49
7,384.0	90.80	158.86	6,415.2	368.7	2,136.5	460.7	1.46
7,479.0	90.50	158.27	6,414.2	280.3	2,171.2	555.7	0.70
7,574.0	89.97	159.78	6,413.8	191.6	2,205.2	650.7	1.68
7,666.0	90.54	160.48	6,413.4	105.0	2,236.5	742.6	0.98
7,761.0	90.67	161.88	6,412.4	15.1	2,267.1	837.5	1.48
7,856.0	90.60	160.59	6,411.3	-74.8	2,297.7	932.3	1.36
7,951.0	89.73	158.77	6,411.0	-163.9	2,330.7	1,027.3	2.12
8,045.0	90.24	159.66	6,411.1	-251.8	2,364.0	1,121.2	1.09
8,140.0	89.23	158.76	6,411.5	-340.6	2,397.7	1,216.2	1.42
8,235.0	89.87	159.11	6,412.2	-429.2	2,431.9	1,311.2	0.77
8,330.0	89.80	157.25	6,412.5	-517.4	2,467.2	1,406.2	1.96
8,424.0	88.49	157.01	6,413.9	-604.0	2,503.7	1,500.2	1.42
8,518.0	88.42	154.97	6,416.5	-689.9	2,542.0	1,594.1	2.17
8,613.0	89.20	157.69	6,418.4	-776.8	2,580.1	1,689.0	2.98
8,708.0	89.43	157.08	6,419.6	-864.5	2,616.6	1,784.0	0.69
8,802.0	91.17	156.83	6,419.1	-951.0	2,653.4	1,878.0	1.87
8,896.0	90.24	156.35	6,417.9	-1,037.3	2,690.8	1,971.9	1.11
8,992.0	89.63	156.25	6,418.0	-1,125.2	2,729.3	2,067.9	0.64
9,087.0	89.53	157.22	6,418.7	-1,212.5	2,766.9	2,162.9	1.03
9,181.0	90.03	158.25	6,419.1	-1,299.5	2,802.5	2,256.9	1.22
9,277.0	90.37	159.12	6,418.7	-1,388.9	2,837.4	2,352.9	0.97
9,371.0	90.13	158.32	6,418.3	-1,476.5	2,871.5	2,446.8	0.89
9,466.0	90.40	158.45	6,417.9	-1,564.8	2,906.5	2,541.8	0.32
9,561.0	89.97	156.25	6,417.6	-1,652.5	2,943.1	2,636.8	2.36
9,657.0	90.13	154.90	6,417.5	-1,739.9	2,982.8	2,732.7	1.42
9,751.0	89.90	156.83	6,417.5	-1,825.6	3,021.2	2,826.7	2.07
9,846.0	90.40	155.74	6,417.2	-1,912.6	3,059.4	2,921.6	1.26
9,941.0	89.53	159.41	6,417.3	-2,000.4	3,095.6	3,016.6	3.97
10,036.0	89.40	160.04	6,418.2	-2,089.5	3,128.5	3,111.6	0.68
10,131.0	89.80	159.07	6,418.8	-2,178.5	3,161.7	3,206.5	1.10
10,226.0	90.17	159.64	6,418.9	-2,267.4	3,195.2	3,301.5	0.72
10,322.0	90.50	159.83	6,418.3	-2,357.5	3,228.5	3,397.4	0.40
10,414.0	89.16	158.94	6,418.6	-2,443.6	3,260.9	3,489.4	1.75
10,509.0	90.61	159.11	6,418.8	-2,532.3	3,294.9	3,584.4	1.54
10,604.0	90.24	157.96	6,418.1	-2,620.7	3,329.6	3,679.4	1.27
10,698.0	90.24	157.91	6,417.7	-2,707.8	3,364.9	3,773.4	0.05

JUN 15 2015



WV GEOLOGICAL SURVEY
MORGANTOWN, WV

Flow Completion Report



Company:	Antero Resources	Local Co-ordinate Reference:	Well Hendershot Unit 1H
Project:	Ritchie County WV	TVD Reference:	Hendershot Unit 1H GL 1117 + 23 RKB @ 1140.0
Site:	Hendershot/Paige/Eppard/Brook/Bow	MD Reference:	Hendershot Unit 1H GL 1117 + 23 RKB @ 1140.0
Well:	Hendershot Unit 1H	North Reference:	Grid
Wellbore:	Original Wellpath	Survey Calculation Method:	Minimum Curvature
Design:	As Drilled	Database:	Oklahoma District

MD (usft)	Inc (°)	Azi (azimuth) (°)	TVD (usft)	N/S (usft)	E/W (usft)	V. Sec (usft)	DLeg (°/100usft)
10,793.0	90.30	157.96	6,417.2	-2,795.9	3,400.6	3,868.4	0.08
10,888.0	90.37	157.66	6,416.7	-2,883.8	3,436.5	3,963.4	0.32
10,978.0	90.17	157.56	6,416.2	-2,967.0	3,470.8	4,053.4	0.25
11,069.0	89.30	156.39	6,416.7	-3,050.8	3,506.4	4,144.4	1.60
11,160.0	89.56	157.69	6,417.6	-3,134.6	3,541.9	4,235.3	1.46
11,250.0	89.33	157.38	6,418.4	-3,217.7	3,576.3	4,325.3	0.43
11,341.0	89.39	156.94	6,419.5	-3,301.6	3,611.6	4,416.3	0.49
11,431.0	89.36	157.62	6,420.4	-3,384.6	3,646.3	4,506.3	0.76
11,522.0	89.63	157.07	6,421.2	-3,468.6	3,681.4	4,597.3	0.67
11,612.0	88.49	159.12	6,422.7	-3,552.1	3,715.0	4,687.3	2.61
11,703.0	88.56	158.59	6,425.1	-3,636.9	3,747.8	4,778.2	0.59
11,793.0	88.92	158.99	6,427.0	-3,720.8	3,780.3	4,868.2	0.60
11,884.0	88.56	159.46	6,429.0	-3,805.9	3,812.6	4,959.2	0.65
11,973.0	89.76	158.60	6,430.3	-3,889.0	3,844.5	5,048.1	1.66
12,067.0	89.73	156.90	6,430.8	-3,976.0	3,880.0	5,142.1	1.81
12,162.0	88.39	156.73	6,432.3	-4,063.3	3,917.4	5,237.1	1.42
12,257.0	88.89	156.75	6,434.6	-4,150.5	3,954.9	5,332.1	0.53
12,351.0	89.16	156.30	6,436.2	-4,236.7	3,992.4	5,426.0	0.56
12,446.0	89.26	157.81	6,437.5	-4,324.2	4,029.4	5,521.0	1.59
12,541.0	89.80	158.15	6,438.3	-4,412.3	4,065.0	5,616.0	0.67
12,636.0	89.63	155.89	6,438.7	-4,499.7	4,102.1	5,711.0	2.39
12,731.0	89.09	156.33	6,439.8	-4,586.6	4,140.6	5,805.9	0.73
12,826.0	89.26	156.95	6,441.2	-4,673.8	4,178.3	5,900.9	0.68
12,921.0	89.66	156.53	6,442.1	-4,761.1	4,215.8	5,995.8	0.61
13,014.0	90.23	158.30	6,442.2	-4,846.9	4,251.5	6,088.8	2.00
13,109.0	90.60	159.11	6,441.5	-4,935.4	4,286.0	6,183.8	0.94
13,205.0	89.40	158.33	6,441.5	-5,024.9	4,320.8	6,279.8	1.49
13,299.0	89.66	158.41	6,442.2	-5,112.3	4,355.5	6,373.8	0.29
13,393.0	90.30	157.25	6,442.3	-5,199.3	4,390.9	6,467.8	1.41
13,487.0	89.70	158.13	6,442.3	-5,286.3	4,426.6	6,561.8	1.13
13,582.0	89.60	158.83	6,442.8	-5,374.6	4,461.5	6,656.8	0.74
13,677.0	90.10	158.89	6,443.1	-5,463.2	4,495.7	6,751.8	0.53
13,772.0	90.44	159.20	6,442.6	-5,552.0	4,529.7	6,846.8	0.48
13,867.0	89.73	159.07	6,442.5	-5,640.7	4,563.5	6,941.7	0.76
13,963.0	89.93	159.03	6,442.8	-5,730.4	4,597.9	7,037.7	0.21
14,057.0	90.23	159.31	6,442.7	-5,818.2	4,631.3	7,131.7	0.44
14,152.0	90.40	159.37	6,442.1	-5,907.1	4,664.8	7,226.7	0.19
14,246.0	89.30	158.57	6,442.4	-5,994.9	4,698.5	7,320.7	1.45
14,342.0	89.63	158.69	6,443.3	-6,084.3	4,733.5	7,416.6	0.37
14,436.0	89.36	157.10	6,444.1	-6,171.3	4,768.9	7,510.6	1.72
14,532.0	89.87	156.82	6,444.8	-6,259.7	4,806.5	7,606.6	0.61
14,627.0	90.40	157.05	6,444.5	-6,347.1	4,843.7	7,701.6	0.61
14,722.0	88.28	157.39	6,445.6	-6,434.7	4,880.5	7,796.6	2.26
14,816.0	88.89	157.50	6,447.9	-6,521.5	4,916.5	7,890.6	0.66



Company:	Antero Resources	Local Co-ordinate Reference:	Well Hendershot Unit 1H
Project:	Ritchie County WV	TVD Reference:	Hendershot Unit 1H GL 1117 + 23 RKB @ 1140.0
Site:	Hendershot/Paige/Eppard/Brook/Bow	MD Reference:	Hendershot Unit 1H GL 1117 + 23 RKB @ 1140.0
Well:	Hendershot Unit 1H	North Reference:	Grid
Wellbore:	Original Wellpath	Survey Calculation Method:	Minimum Curvature
Design:	As Drilled	Database:	Oklahoma District

Survey

MD (usft)	Inc (°)	Azi (azimuth) (°)	TVD (usft)	N/S (usft)	E/W (usft)	V. Sec (usft)	DLeg (°/100usft)
14,910.0	89.09	157.68	6,449.6	-6,608.3	4,952.3	7,984.5	0.29
15,005.0	90.24	156.69	6,450.2	-6,695.9	4,989.2	8,079.5	1.60
15,100.0	90.50	155.74	6,449.5	-6,782.8	5,027.5	8,174.5	1.04
15,195.0	90.67	155.94	6,448.6	-6,869.5	5,066.4	8,269.4	0.28
15,279.0	90.94	155.60	6,447.4	-6,946.1	5,100.8	8,353.3	0.52
15,335.0	90.94	155.60	6,446.5	-6,997.1	5,124.0	8,409.3	0.00

Design Annotations

Measured Depth (usft)	Vertical Depth (usft)	Local Coordinates		Comment
		+N/-S (usft)	+E/-W (usft)	
6,692.0	6,151.5	785.8	1,723.0	Sycamore
6,833.0	6,244.5	756.2	1,824.4	Middlesex
7,038.0	6,351.1	655.9	1,966.0	Burkett
7,104.0	6,374.9	610.6	2,007.6	Tully
7,183.0	6,396.4	548.1	2,050.6	Marcellus

Checked By: _____ Approved By: _____ Date: _____

RECEIVED
 JUN 15 2015
 WV GEOLOGICAL SURVEY
 MORGANTOWN, WV