

JUN 26 2015

WR-35
Rev. 8/23/13

WV GEOLOGICAL SURVEY
MORGANTOWN, WV

State of West Virginia
Department of Environmental Protection - Office of Oil and Gas
Well Operator's Report of Well Work

API 47-085-10062 County Ritchie District Clay
Quad Pullman 7.5' Pad Name Edwin Pad Field/Pool Name ----
Farm name Quimby, Franklin P. Well Number Hornet Unit 1H
Operator (as registered with the OOG) Antero Resources Corporation
Address 1615 Wynkoop St. City Denver State CO Zip 80202

As Drilled location NAD 83/UTM Attach an as-drilled plat, profile view, and deviation survey
Top hole Northing 4342372m Easting 508389m
Landing Point of Curve Northing 4342535.13m Easting 508384.51m
Bottom Hole Northing 4345324m Easting 507060m

Elevation (ft) 1191' GL Type of Well New Existing Type of Report Interim Final
Permit Type Deviated Horizontal Horizontal 6A Vertical Depth Type Deep Shallow
Type of Operation Convert Deepen Drill Plug Back Redrilling Rework Stimulate
Well Type Brine Disposal CBM Gas Oil Secondary Recovery Solution Mining Storage Other _____
Type of Completion Single Multiple Fluids Produced Brine Gas NGL Oil Other _____
Drilled with Cable Rotary

Drilling Media Surface hole Air Mud Fresh Water Intermediate hole Air Mud Fresh Water Brine
Production hole Air Mud Fresh Water Brine

Mud Type(s) and Additive(s)

Air- Foam & 4% KCL

Mud- Polymer

Date permit issued 10/11/2013 Date drilling commenced 1/29/2014 Date drilling ceased 6/1/2014
Date completion activities began 7/15/2014 Date completion activities ceased 10/29/2014
Verbal plugging (Y/N) N/A Date permission granted N/A Granted by N/A

Please note: Operator is required to submit a plugging application within 5 days of verbal permission to plug

Freshwater depth(s) ft 49' Open mine(s) (Y/N) depths No
Salt water depth(s) ft None Identified Void(s) encountered (Y/N) depths No
Coal depth(s) ft None Identified Cavern(s) encountered (Y/N) depths No
Is coal being mined in area (Y/N) No

Reviewed by:

JUN 26 2015

WV GEOLOGICAL SURVEY
MORGANTOWN, WV

WR-35
Rev. 8/23/13

Page ___ of ___

API 47-085 - 10062 Farm name Quimby, Franklin P. Well number Hornet Unit 1H

CASING STRINGS	Hole Size	Casing Size	Depth	New or Used	Grade wt/ft	Basket Depth(s)	Did cement circulate (Y/ N) * Provide details below*
Conductor	24"	20"	40'	New	51# H-40	N/A	Y
Surface	17- 1/2"	13- 3/8"	351'	New	48# H-40	N/A	Y
Coal							
Intermediate 1	12-1/4"	9-5/8"	2609'	New	36# J-55	N/A	Y
Intermediate 2							
Intermediate 3							
Production	8-3/4" & 8-1/2"	5-1/2"	17042'	New	23# P-110	N/A	Y
Tubing		2-3/8"	6710'		4.7# N-80	N/A	
Packer type and depth set		N/A					

Comment Details _____

CEMENT DATA	Class/Type of Cement	Number of Sacks	Slurry wt (ppg)	Yield (ft ³ /sks)	Volume (ft ³)	Cement Top (MD)	WOC (hrs)
Conductor	Class A	200 sx	15.6	1.18	38	0'	8 Hrs.
Surface	Class A	426 sx	15.6	1.18	244	0'	8 Hrs.
Coal							
Intermediate 1	Class A	1017 sx	15.6	1.18	817	0'	8 Hrs.
Intermediate 2							
Intermediate 3							
Production	Class H	978 sx (Lead) 1589 sx (Tail)	14.5 Lead 15.2 Tail	1.3 Lead 1.86 Tail	3,421	~500' into Intermediate Casing	8 Hrs.
Tubing							

Drillers TD (ft) 17042' MD, 6476' TVD (BHL); 6602' TVD (Deepest point drilled) Loggers TD (ft) 17033'
Deepest formation penetrated Marcellus Plug back to (ft) N/A
Plug back procedure N/A

Kick off depth (ft) 5968'

Check all wireline logs run caliper density deviated/directional induction
 neutron resistivity gamma ray temperature sonic

Well cored Yes No Conventional Sidewall Were cuttings collected Yes No

DESCRIBE THE CENTRALIZER PLACEMENT USED FOR EACH CASING STRING _____
Conductor- 0
Surface- 1 above guide shoe, 1 above insert float, 1 every 4th joint to surface
Intermediate- 1 above float joint, 1 above float collar, 1 every 4th joint to surface
Production- 1 above float joint, 1 below float collar, 1 every 3rd joint to top of cement

WAS WELL COMPLETED AS SHOT HOLE Yes No DETAILS _____

WAS WELL COMPLETED OPEN HOLE? Yes No DETAILS _____

WERE TRACERS USED Yes No TYPE OF TRACER(S) USED Radioactive + Chemical

API 47-085-10062 Farm Name Quimby, Franklin P. Well Number Hornet Unit 1H

EXHIBIT 1

Stage No.	Perforation Date	Perforated from MD ft.	Perforated to MD ft.	Number of Perforations	Formations
1	15-Jul-14	16,785	16,954	60	Marcellus
2	27-Jul-14	16,585	16,754	60	Marcellus
3	28-Jul-14	16,385	16,554	60	Marcellus
4	28-Jul-14	16,185	16,351	60	Marcellus
5	28-Jul-14	15,985	16,154	60	Marcellus
6	29-Jul-14	15,785	15,954	60	Marcellus
7	29-Jul-14	15,585	15,754	60	Marcellus
8	30-Jul-14	15,385	15,554	60	Marcellus
9	30-Jul-14	15,185	15,354	60	Marcellus
10	30-Jul-14	14,985	15,154	60	Marcellus
11	31-Jul-14	14,785	14,954	60	Marcellus
12	31-Jul-14	14,585	14,754	60	Marcellus
13	31-Jul-14	14,385	14,554	60	Marcellus
14	1-Aug-14	14,185	14,354	60	Marcellus
15	2-Aug-14	13,985	14,154	60	Marcellus
16	2-Aug-14	13,785	13,954	60	Marcellus
17	2-Aug-14	13,585	13,754	60	Marcellus
18	2-Aug-14	13,385	13,554	60	Marcellus
19	2-Aug-14	13,185	13,353	60	Marcellus
20	3-Aug-14	12,985	13,153	60	Marcellus
21	3-Aug-14	12,785	12,953	60	Marcellus
22	3-Aug-14	12,585	12,753	60	Marcellus
23	4-Aug-14	12,385	12,553	60	Marcellus
24	4-Aug-14	12,185	12,353	60	Marcellus
25	4-Aug-14	11,985	12,153	60	Marcellus
26	4-Aug-14	11,785	11,953	60	Marcellus
27	4-Aug-14	11,585	11,753	60	Marcellus
28	5-Aug-14	11,385	11,553	60	Marcellus
29	5-Aug-14	11,185	11,353	60	Marcellus
30	5-Aug-14	10,984	11,153	60	Marcellus
31	5-Aug-14	10,784	10,953	60	Marcellus
32	5-Aug-14	10,584	10,753	60	Marcellus
33	6-Aug-14	10,384	10,553	60	Marcellus
34	6-Aug-14	10,184	10,353	60	Marcellus
35	6-Aug-14	9,984	10,153	60	Marcellus
36	6-Aug-14	9,784	9,953	60	Marcellus
37	6-Aug-14	9,584	9,753	60	Marcellus
38	7-Aug-14	9,384	9,553	60	Marcellus
39	7-Aug-14	9,194	9,353	60	Marcellus
40	7-Aug-14	8,984	9,153	60	Marcellus
41	7-Aug-14	8,784	8,953	60	Marcellus
42	7-Aug-14	8,584	8,753	60	Marcellus
43	8-Aug-14	8,384	8,553	60	Marcellus
44	8-Aug-14	8,184	8,353	60	Marcellus
45	8-Aug-14	7,984	8,153	60	Marcellus
46	8-Aug-14	7,784	7,953	60	Marcellus
47	8-Aug-14	7,584	7,753	60	Marcellus
48	9-Aug-14	7,384	7,553	60	Marcellus
49	9-Aug-14	7,184	7,353	60	Marcellus
50	9-Aug-14	6,984	7,153	60	Marcellus
51	9-Aug-14	6,784	6,953	60	Marcellus

RECEIVED
 JUN 26 2015
 WV GEOLOGICAL SURVEY
 MORGANTOWN, WV

RECEIVED
 JUN 26 2015
 WV GEOLOGICAL SURVEY
 MORRISTOWN, WV

API 47-085-10062 Farm Name Quimby, Franklin P. Well Number Hornet Unit 1H

EXHIBIT 2

Stage No.	Stimulations Date	Avg Pump Rate	Avg Treatment Pressure (PSI)	Max Breakdown Pressure (PSI)	ISIP (PSI)	Amount of Proppant (lbs)	Amount of Water (bbls)	Amount of Nitrogen/ other (units)
1	27-Jul-14	74.0	7,842	4,975	5,014	256,840	6,701	N/A
2	28-Jul-14	73.0	7,655	5,529	3,226	253,440	6,575	N/A
3	28-Jul-14	70.0	7,978	5,972	4,907	157,020	6,350	N/A
4	28-Jul-14	75.0	8,086	5,787	4,370	143,580	7,199	N/A
5	29-Jul-14	75.0	7,961	5,926	4,374	205,010	7,090	N/A
6	29-Jul-14	82.0	8,258	5,618	5,300	217,000	7,096	N/A
7	30-Jul-14	76.0	7,913	6,019	4,839	256,580	6,532	N/A
8	30-Jul-14	80.0	7,975	5,404	4,930	239,130	5,668	N/A
9	30-Jul-14	80.0	8,185	5,530	4,919	231,240	6,481	N/A
10	30-Jul-14	72.0	7,812	5,243	4,206	224,710	6,203	N/A
11	31-Jul-14	69.0	7,694	5,279	4,209	232,320	7,006	N/A
12	31-Jul-14	78.0	7,886	5,980	4,153	253,590	6,612	N/A
13	31-Jul-14	79.0	8,227	5,654	4,367	233,060	5,961	N/A
14	1-Aug-14	72.0	7,665	5,364	4,857	209,860	6,140	N/A
15	2-Aug-14	72.0	7,521	5,128	4,399	217,310	6,069	N/A
16	2-Aug-14	75.0	7,743	5,640	4,631	225,510	7,020	N/A
17	2-Aug-14	75.0	7,448	5,407	5,035	250,660	6,453	N/A
18	2-Aug-14	76.0	7,259	5,182	5,178	254,910	6,412	N/A
19	3-Aug-14	74.0	7,437	5,400	4,302	257,630	6,371	N/A
20	3-Aug-14	73.0	7,408	5,769	5,150	254,420	6,414	N/A
21	3-Aug-14	76.0	7,443	5,565	3,877	256,710	6,359	N/A
22	3-Aug-14	71.0	7,741	5,354	5,046	219,480	5,984	N/A
23	4-Aug-14	75.0	7,667	5,089	4,163	254,220	6,296	N/A
24	4-Aug-14	73.0	7,578	5,962	5,329	255,840	6,313	N/A
25	4-Aug-14	75.0	7,208	5,254	4,313	257,220	6,345	N/A
26	4-Aug-14	74.0	7,732	5,128	3,848	248,920	6,261	N/A
27	5-Aug-14	75.0	7,661	5,783	2,911	257,330	6,283	N/A
28	5-Aug-14	77.0	7,825	5,779	4,106	196,970	5,645	N/A
29	5-Aug-14	73.0	7,178	5,754	5,000	225,160	6,226	N/A
30	5-Aug-14	72.0	7,563	5,690	5,618	237,250	6,684	N/A
31	5-Aug-14	76.0	7,635	5,822	3,015	257,920	6,225	N/A
32	5-Aug-14	75.0	7,698	5,951	4,996	247,010	6,699	N/A
33	6-Aug-14	79.0	7,414	5,404	3,122	259,020	6,192	N/A
34	6-Aug-14	72.0	7,472	5,833	4,438	134,200	6,326	N/A
35	6-Aug-14	75.0	7,681	5,729	4,678	165,900	6,626	N/A
36	6-Aug-14	78.0	7,444	6,201	3,233	258,790	6,223	N/A
37	6-Aug-14	79.0	7,441	6,155	2,975	258,660	6,141	N/A
38	7-Aug-14	71.0	7,350	6,334	5,776	42,560	5,498	N/A
39	7-Aug-14	72.0	6,905	5,400	4,556	257,390	6,521	N/A
40	7-Aug-14	73.0	7,329	6,144	5,064	159,880	6,148	N/A
41	7-Aug-14	72.0	7,218	5,733	3,526	210,140	5,771	N/A
42	7-Aug-14	76.0	7,289	6,051	5,157	149,770	4,806	N/A
43	8-Aug-14	71.0	6,832	5,536	4,967	259,400	6,315	N/A
44	8-Aug-14	69.0	7,157	6,137	5,025	188,590	6,026	N/A
45	8-Aug-14	75.0	6,822	5,296	3,916	256,660	6,040	N/A
46	8-Aug-14	81.0	7,160	5,926	4,045	231,200	5,696	N/A
47	8-Aug-14	75.0	7,367	2,078	3,744	254,440	5,879	N/A
48	9-Aug-14	70.0	7,152	5,604	3,648	255,320	5,973	N/A
49	9-Aug-14	76.0	6,819	5,736	5,064	258,880	6,081	N/A
50	9-Aug-14	78.0	7,080	5,611	4,832	223,480	6,550	N/A
51	9-Aug-14	82.0	6,854	5,372	3,837	254,780	5,935	N/A
AVG=		74.8	7,523	5,573	4,435	11,566,910	320,420	TOTAL

JUN 26 2015

WV GEOLOGICAL SURVEY
MORGANTOWN, WV

API 47-085-10062 Farm Name Quimby, Franklin P. Well Number Hornet Unit 1H

EXHIBIT 3

LITHOLOGY/ FORMATION	TOP DEPTH (TVD) From Surface	BOTTOM DEPTH (TVD) From Surface	TOP DEPTH (MD) From Surface	BOTTOM DEPTH (MD) From Surface
Fresh Water	49'	N/A	49'	N/A
Sandstone/ Shale	0	307	0	307
Sandstone/ Shale	est. 307	447	est. 307	447
Siltstone/ Shale	est. 447	567	est. 447	567
Shale/ Limestone	est. 567	587	est. 567	587
Siltstone	est. 587	607	est. 587	607
Shale/ Trace Coal	est. 607	647	est. 607	647
Limestone/ Shale	est. 647	707	est. 647	707
Shale/ Siltstone	est. 707	847	est. 707	847
Shale	est. 847	1127	est. 847	1127
Shale/ Limestone	est. 1127	1187	est. 1127	1187
Shale/Limestone/ Trace Coal	est. 1187	1207	est. 1187	1207
Limestone/ Shale	est. 1207	1287	est. 1207	1287
Shale/ Coal	est. 1287	1327	est. 1287	1327
Shale/ Limestone	est. 1327	1387	est. 1327	1387
Shale/ Trace Coal	est. 1387	1407	est. 1387	1407
Shale	est. 1407	1727	est. 1407	1727
Siltstone/Shale	est. 1727	1787	est. 1727	1787
Siltstone/ Trace Coal	est. 1787	1967	est. 1787	1967
Shale/Trace Coal	est. 1967	2007	est. 1967	2007
Siltstone	est. 2007	2134	est. 2007	2134
Big Lime	2134	2241	2134	2241
Big Injun	2241	2616	2241	2616
Gantz Sand	2616	2836	2616	2836
Fifty Foot Sandstone	2836	2895	2836	2895
Gordon	2895	3042	2895	3042
Fifth Sandstone	3042	3170	3042	3170
Bayard	3170	3600	3170	3600
Warren	3600	3992	3600	3992
Speechley	3992	4265	3992	4265
Baltown	4265	4693	4265	4693
Bradford	4693	5075	4693	5075
Benson	5075	5335	5075	5335
Alexander	5335	5513	5335	5513
Elk	5513	5974	5513	5974
Rhinestreet	5974	6263	5974	6284
Sycamore	6244	6402	6265	6452
Middlesex	6402	6510	6452	6619
Burkett	6510	6539	6619	6683
Tully	6539	6561	6683	6745
Marcellus	6561	NA	6745	NA

*Please note Antero determines formation tops based on mud logs that are only run on one well on a multi-well pad The measured depth (MD) data on subsequent wells may be slightly different due to the well's unique departure.

Hydraulic Fracturing Fluid Product Component Information Disclosure

RECEIVED
 JUN 26 2015
 WV GEOLOGICAL SURVEY
 MORGANTOWN, WV



Job Start Date:	7/27/2014
Job End Date:	8/9/2014
State:	West Virginia
County:	Ritchie
API Number:	47-085-10062-00-00
Operator Name:	Antero Resources Corporation
Well Name and Number:	Hornet Unit 1H
Longitude:	-80.90280300
Latitude:	39.23060600
Datum:	NAD83
Federal/Tribal Well:	NO
True Vertical Depth:	6,602
Total Base Water Volume (gal):	13,457,640
Total Base Non Water Volume:	-11,525,891

Hydraulic Fracturing Fluid Composition:

Trade Name	Supplier	Purpose	Ingredients	Chemical Service Number (CAS #)	Maximum Ingredient Concentration in Additive (% by mass)**	Maximum Ingredient Concentration in HF Fluid (% by mass)**	Comments
Water	Antero Resources	Base Fluid	Water	7732-18-5	100.00000	90.34380	
Sand	U.S. Well Services, LLC	Proppant	Crystalline Silica, quartz	14808-60-7	100.00000	9.31067	
LGC-15	U.S. Well Services, LLC	Gelling Agents	Guar Gum	9000-30-0	50.00000	0.05905	
			Petroleum Distillates	64742-47-8	60.00000	0.05592	
			Suspending agent (solid)	14808-60-7	3.00000	0.00903	
			Surfactant	68439-51-0	3.00000	0.00354	
HCL Acid (12.6%-18.0%)	U.S. Well Services, LLC	Bulk Acid					
			Water	7732-18-5	87.50000	0.08509	
			Hydrogen Chloride	7647-01-1	18.00000	0.02032	
WFRA-405	U.S. Well Services, LLC	Friction Reducer	Water	7732-18-5	40.00000	0.03023	
			Anionic Polyacrylamide	Proprietary		0.03023	
			Petroleum Distillates	64742-47-8	22.00000	0.02434	
			Crystalline Salt	12125-02-9	5.00000	0.00376	

RECEIVED
 JUN 26 2015
 WV GEOLOGICAL SURVEY
 MORGANTOWN, WV

SI-1000	U.S. Well Services, LLC	Scale Inhibitor	Ethoxylated alcohol blend	Proprietary	5.00000	0.00378
		Anionic Copolymer		Proprietary		0.00422
		Ethylene Glycol		107-21-1	20.00000	0.00381
		Water		7732-18-5	30.00000	0.00318
K-BAC 1020	U.S. Well Services, LLC	Anti-Bacterial Agent				
			2,2-dibromo-3-nitripropionamide	10222-01-2	20.00000	0.00428
			Deionized Water	7732-18-5	28.00000	0.00245
AP One	U.S. Well Services, LLC	Gel Breakers				
			Ammonium Persulfate	7727-54-0	100.00000	0.00175
AI-300	U.S. Well Services, LLC	Acid Corrosion Inhibitors				
			Ethylene Glycol	107-21-1	31.00000	0.00022
			N,N-Dimethylformamide	68-12-2	15.00000	0.00007
			Tar bases, quinoline derivs, benzyl chloride-quaternized	72480-70-7	13.00000	0.00006
			Cinnamaldehyde	104-55-2	5.00000	0.00006
			2-Butoxyethanol	111-76-2	7.00000	0.00005
			Ethoxylated Nonylphenol	68412-54-4	5.00000	0.00002
			Water	7732-18-5	20.00000	0.00002
			Isopropyl Alcohol	67-63-0	3.00000	0.00001
			Triethyl Phosphate	78-40-0	3.00000	0.00001

Ingredients shown above are subject to 29 CFR 1910.1200(i) and appear on Material Safety Data Sheets (MSDS). Ingredients shown below are Non-MSDS.

* Total Water Volume sources may include fresh water, produced water, and/or recycled water
 ** Information is based on the maximum potential for concentration and thus the total may be over 100%

Note: For Field Development Products (products that begin with FDP), MSDS level only information has been provided. Ingredient information for chemicals subject to 29 CFR 1910.1200(i) and Appendix D are obtained from suppliers Material Safety Data Sheets (MSDS)

LATITUDE 39°15'00"

7,925'

475' TO BOTTOM HOLE
LATITUDE 39°17'30"

Antero Resources
Appalachian
Well No. Hornet Unit 1H
47-085-10062 (AS DRILLED)

NOTE:
ONE WATER WELL WAS
LOCATED WITHIN 2000'
OF THE CENTER OF PAD

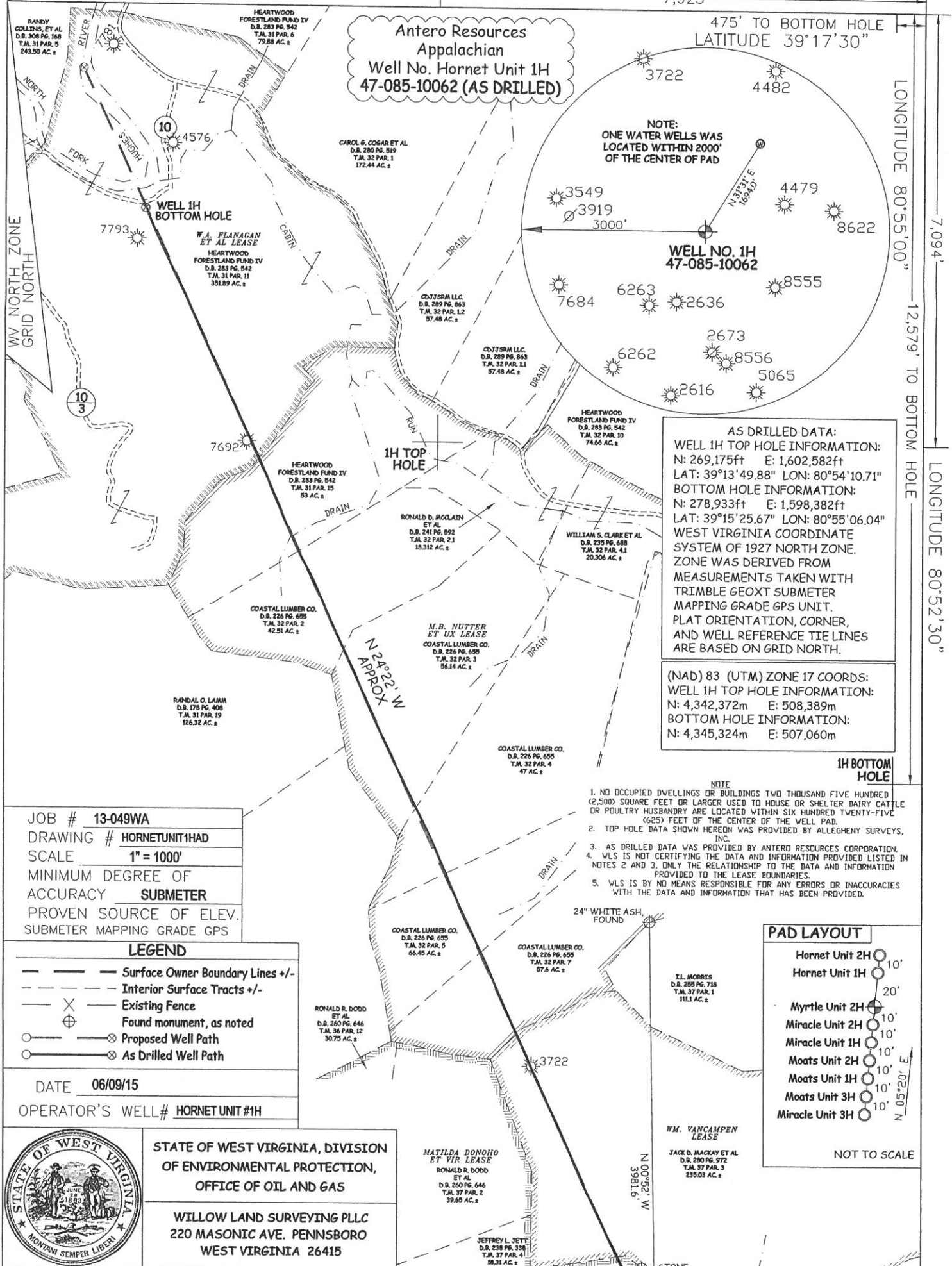
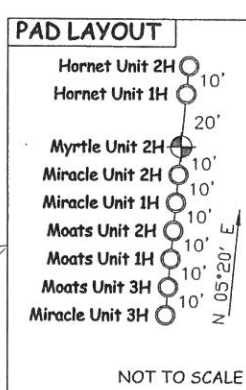
WELL NO. 1H
47-085-10062

AS DRILLED DATA:
WELL 1H TOP HOLE INFORMATION:
N: 269,175ft E: 1,602,582ft
LAT: 39°13'49.88" LON: 80°54'10.71"
BOTTOM HOLE INFORMATION:
N: 278,933ft E: 1,598,382ft
LAT: 39°15'25.67" LON: 80°55'06.04"
WEST VIRGINIA COORDINATE
SYSTEM OF 1927 NORTH ZONE.
ZONE WAS DERIVED FROM
MEASUREMENTS TAKEN WITH
TRIMBLE GEOXT SUBMETER
MAPPING GRADE GPS UNIT.
PLAT ORIENTATION, CORNER,
AND WELL REFERENCE TIE LINES
ARE BASED ON GRID NORTH.

(NAD) 83 (UTM) ZONE 17 COORDS:
WELL 1H TOP HOLE INFORMATION:
N: 4,342,372m E: 508,389m
BOTTOM HOLE INFORMATION:
N: 4,345,324m E: 507,060m

1H BOTTOM HOLE

- NOTE
1. NO OCCUPIED DWELLINGS OR BUILDINGS TWO THOUSAND FIVE HUNDRED (2,500) SQUARE FEET OR LARGER USED TO HOUSE OR SHELTER DAIRY CATTLE OR POULTRY HUSBANDRY ARE LOCATED WITHIN SIX HUNDRED TWENTY-FIVE (625) FEET OF THE CENTER OF THE WELL PAD.
 2. TOP HOLE DATA SHOWN HEREON WAS PROVIDED BY ALLEGHENY SURVEYS, INC.
 3. AS DRILLED DATA WAS PROVIDED BY ANTERO RESOURCES CORPORATION.
 4. WLS IS NOT CERTIFYING THE DATA AND INFORMATION PROVIDED LISTED IN NOTES 2 AND 3, ONLY THE RELATIONSHIP TO THE DATA AND INFORMATION PROVIDED TO THE LEASE BOUNDARIES.
 5. WLS IS BY NO MEANS RESPONSIBLE FOR ANY ERRORS OR INACCURACIES WITH THE DATA AND INFORMATION THAT HAS BEEN PROVIDED.



JOB # **13-049WA**
DRAWING # **HORNETUNIT1HAD**
SCALE **1" = 1000'**
MINIMUM DEGREE OF ACCURACY **SUBMETER**
PROVEN SOURCE OF ELEV. **SUBMETER MAPPING GRADE GPS**

- LEGEND**
- — — Surface Owner Boundary Lines +/-
 - - - Interior Surface Tracts +/-
 - ⊗ Existing Fence
 - ⊕ Found monument, as noted
 - Proposed Well Path
 - ⊗ As Drilled Well Path

DATE **06/09/15**
OPERATOR'S WELL # **HORNET UNIT #1H**



STATE OF WEST VIRGINIA, DIVISION
OF ENVIRONMENTAL PROTECTION,
OFFICE OF OIL AND GAS
WILLOW LAND SURVEYING PLLC
220 MASONIC AVE. PENNSBORO
WEST VIRGINIA 26415

STATE OF WEST VIRGINIA DEPARTMENT OF ENERGY DIVISION OF OIL AND GAS

API WELL # **47 - 085 - 10062**

WELL TYPE: OIL GAS LIQUID INJECTION WASTE DISPOSAL
(IF "GAS") PRODUCTION STORAGE DEEP SHALLOW

LOCATION: ELEVATION **1,217' ORIGINAL - 1,191' AS DRILLED** WATERSHED **NORTH FORK HUGHES RIVER**
QUADRANGLE **PULLMAN 7.5 (TH) PENNSBORO 7.5 (BH)** DISTRICT **CLAY** COUNTY **RITCHIE**

SURFACE OWNER **FRANKLIN P. QUIMBY** ACREAGE **23 ACRES +/-**

OIL & GAS ROYALTY OWNER **LAWRENCE C. HEIM ET AL; MATILDA DONOHO ET VIR; WM. VANCAMPEN; M.B. NUTTER ET UX; W.A. FLANAGAN ET AL**

LEASE ACREAGE **53 ACRES±; 156 ACRES±; 312 ACRES±; 400 ACRES±; 238 ACRES±**

PROPOSED WORK: DRILL CONVERT DRILL DEEPER REDRILL FRACTURE OR STIMULATE
PLUG OFF OLD FORMATION PERFORATE NEW FORMATION OTHER PHYSICAL CHANGE IN WELL (SPECIFY) **(X) AS DRILLED** PLUG & ABANDON CLEAN OUT & REPLUG

TARGET FORMATION **MARCELLUS** ESTIMATED DEPTH **6,475' TVD 17,042' MD**

WELL OPERATOR **ANTERO RESOURCES CORP.** DESIGNATED AGENT **DIANNA STAMPER**
ADDRESS **1615 WYNKOOP STREET** ADDRESS **CT CORPORATION SYSTEM**
DENVER, CO 80202 **5400 D BIG TYLER ROAD**
CHARLESTON, WV 25313