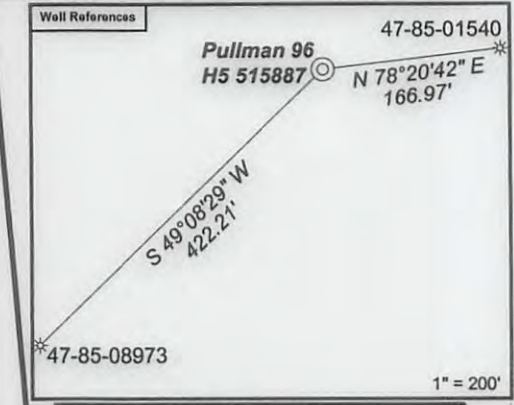
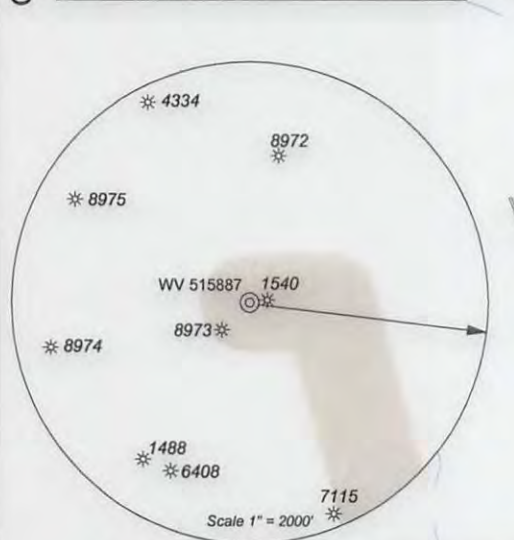


**WV 515887**  
**EQT Production Company**  
**Laurie Ann Haddox, et al**  
**360 Acres**



**As-Drilled Well Information:**  
WV 515887 coordinates are  
NAD 27 N: 262,419.41 E: 1,578,899.99  
NAD 83 UTM N: 4,340,193.53 E: 501,208.64  
WV 515887 Landing Point coordinates are  
NAD 27 N: 262,353.78 E: 1,579,741.63  
NAD 83 UTM N: 4,340,177.83 E: 501,465.38  
WV 515887 Bottom Hole coordinates are  
NAD 27 N: 258,347.76 E: 1,580,840.20  
NAD 83 UTM N: 4,338,963.01 E: 501,820.43  
West Virginia Coordinate system of 1927 (North Zone).  
Geographic coordinates are NAD27.  
UTM coordinates are NAD83, Zone 17, Meters.  
Plat orientation, corner and well ties are based upon  
the grid north meridian.  
Well location references are based upon the grid north  
meridian.



(⊙) Denotes Location of Well on United States Topographic Maps

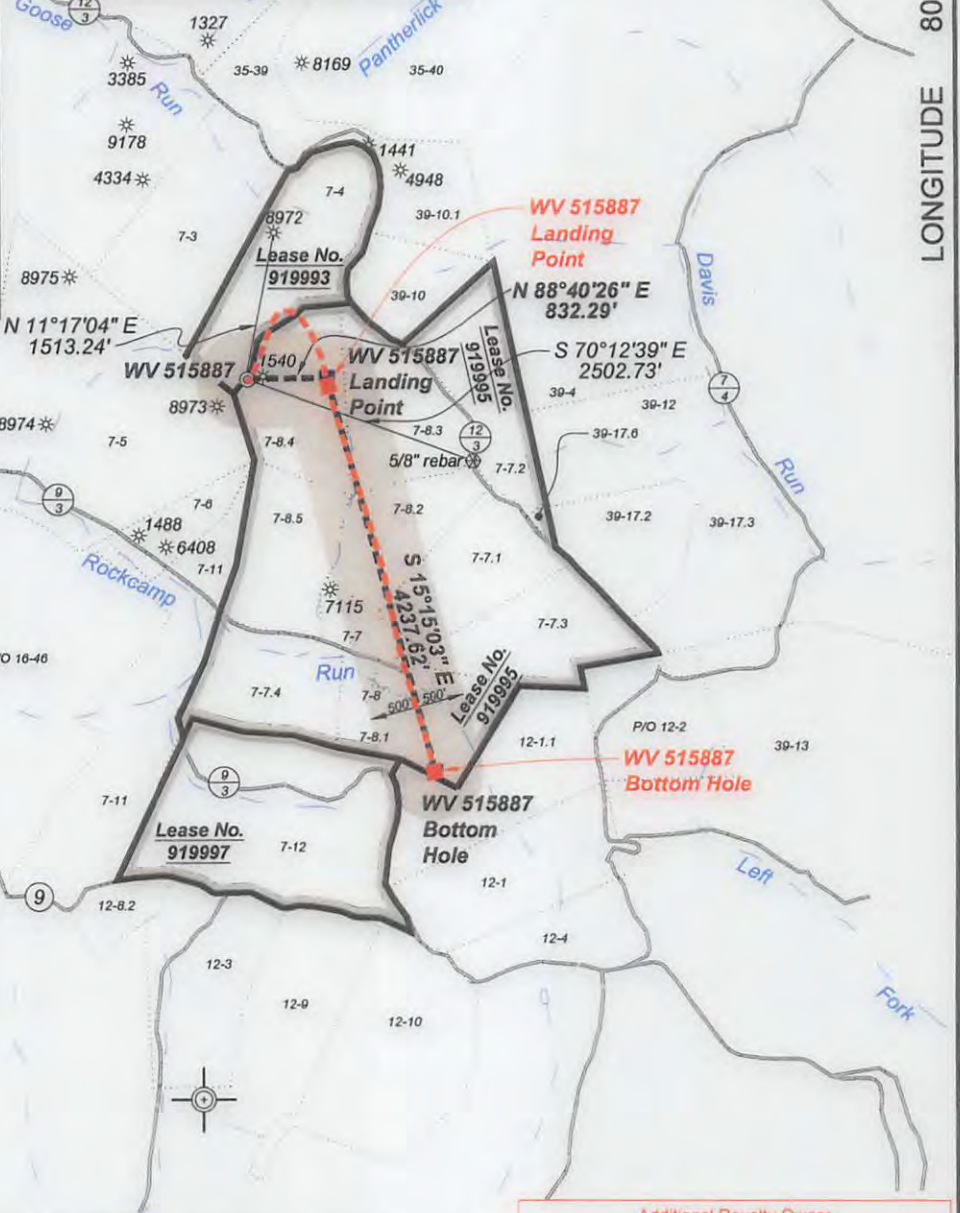
- ⊙ Proposed Gas Well
- Located Corner, as noted
- Surface Tract Lines
- Reference Line
- Lease Boundary
- Creek or Drain
- 5 WV County Route
- 5 WV State Route

LATITUDE 39 - 15 - 00

Pullman 96

- ⊙ H10, 515977
- ⊙ H7, 515965
- ⊙ H5, 515887
- ⊙ H2, 515884

LONGITUDE 80 - 57 - 30



*I, the undersigned, hereby certify that this plat is correct to the best of my knowledge and belief and shows all the information required by law and the regulations issued and prescribed by the Department of Environmental Protection.*

*Dwayne A. Hall*  
P.S. 2089SU



FILE NO: 243-14  
DRAWING NO: 243-14 Pullman 96 H5.dwg  
SCALE: 1" = 2000'  
MINIMUM DEGREE OF ACCURACY: 1:2500  
PROVEN SOURCE OF ELEVATION: NGS CORS Station

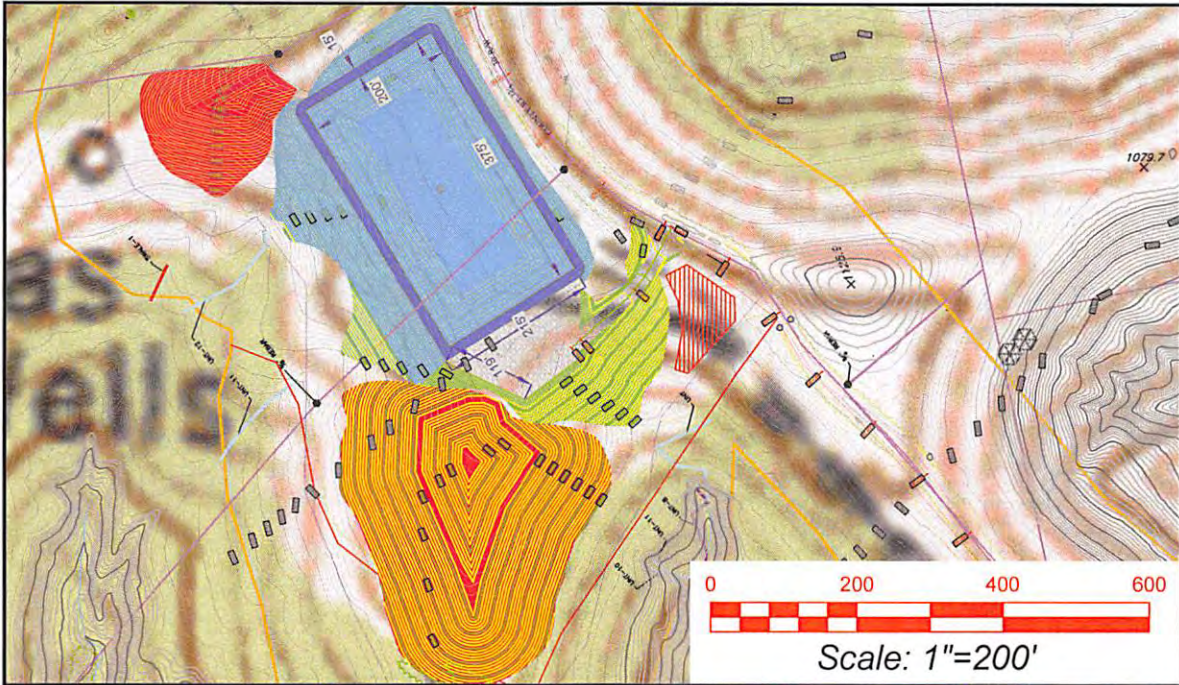
STATE OF WEST VIRGINIA  
DEPARTMENT OF ENVIRONMENTAL PROTECTION  
OIL AND GAS DIVISION

DATE: April 13 20 16  
OPERATOR'S WELL NO. 515887  
API WELL NO  
47 - 85 - 10211 HGA  
STATE COUNTY PERMIT

WELL TYPE:  OIL  GAS  LIQUID INJECTION  WASTE DISPOSAL  
(IF GAS) PRODUCTION:  STORAGE  DEEP  SHALLOW  
LOCATION: ELEVATION: Original: 1194' Proposed: 1182' WATERSHED Goose Run of Rockcamp Run QUADRANGLE: Pullman  
DISTRICT: Union COUNTY: Ritchie  
SURFACE OWNER: James H. & Wilma J. Wilson ACREAGE: 46.069  
ROYALTY OWNER: Laurie Ann Haddox, et al LEASE NO: 919995 ACREAGE: 360  
PROPOSED WORK:  DRILL  CONVERT  DRILL DEEPER  FRACTURE OR STIMULATE  PLUG OFF OLD FORMATION  
 PERFORATE NEW FORMATION  OTHER PHYSICAL CHANGE IN WELL (SPECIFY)  
 PLUG AND ABANDON  CLEAN OUT AND REPLUG TARGET FORMATION: Marcellus ESTIMATED DEPTH: TVD 6,396

WELL OPERATOR: EQT Production Company DESIGNATED AGENT: Rex C. Ray  
ADDRESS: PO Box 280 / 115 Professional Place ADDRESS: PO Box 280 / 115 Professional Place  
Bridgeport, WV 26330 Bridgeport, WV 26330





Detail sketch for Wells WV 515883, 515884, 515885, 515886, 515887, 515888, 515968, 515966, 515967, 515977

Pullman 7.5' USGS QUADRANGLE		Proposed Disturbance Area	
Projected culvert inventory. (for bid purposes only)		Well Site Location	See Site Plan
15" minimum diameter culverts	See Site Plan	Proposed Access Road	See Site Plan
24" minimum diameter culverts	See Site Plan	Approximate Total Disturbance	See Site Plan
DRAWN BY: Dwayne A. Hall, PS	DATE: April 11, 2016	FILE NO: 243-14	DRAWING FILE NO: 243-14 Rec Plan

Note: SEE SITE PLAN OF PULLMAN 96 FOR COMPLETE GRADING & DRAINAGE CONSTRUCTION INCLUDING EROSION & SEDIMENT CONTROL DETAILS, ETC.



**SURVEYING AND MAPPING SERVICES PERFORMED BY:**  
**ALLEGHENY SURVEYS, INC.**  
 1-800-482-8606  
 Birch River Office Phone: (304) 649-8606 Fax: (304) 649-8608  
 237 Birch River Road P.O. Box 438 Birch River, WV 26610

WV Department of Environmental Protection  
 47-085-1021  
 08/12/2016

47-085-10211