



ANTERO RESOURCES CORPORATION

Location: Ritchie County, WV
 Field: Ritchie
 Facility: Bachelor Pad

Slot: Slot #05
 Well: Anderson Unit 2H
 Wellbore: Anderson Unit 2H PWB



API: 47-085-10310-0000
 BHI Job #: 8762316
 Rig: Patterson 342
 Duration: 09/20/2017-09/26/2017

Plot reference wellpath is Anderson Unit 2H PWP Rev-A.0	Grid System: NAD27 / UTM Zone 17 North, US feet
True vertical depths are referenced to Patterson 342 (RKB)	North Reference: Grid north
Measured depths are referenced to Patterson 342 (RKB)	Scale: True distance
Patterson 342 (RKB) to Mean Sea Level: 1218 feet	Depths are in feet
Mean Sea Level to Mud line (At Slot: Slot #05): -1193 feet	Created by: delaset on 2018-01-09
Coordinates are in feet referenced to Slot	Database: WA_MPL_EasternUS_Defn

Location Information				
Facility Name	Grid East (US ft)	Grid North (US ft)	Latitude	Longitude
Bachelor Pad	1636101.623	14275345.503	39°18'41.320"N	81°00'54.920"W
Slot	Local N (ft)	Local E (ft)	Grid East (US ft)	Grid North (US ft)
Slot #05	-18.21	9.43	1636111.048	14275327.297
Comment	Anderson Unit 2H		25ft	
Patterson 342 (RKB) to Mud line (At Slot: Slot #05)			-1193ft	
Mean Sea Level to Mud line (At Slot: Slot #05)			1218ft	
Patterson 342 (RKB) to Mean Sea Level			1218ft	

Gyrodata MS Gyro <17-1/2"> (100°-588') : 0.51° Inc, 110.00ft MD, 110.00ft TVD, 0.31ft VS

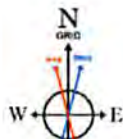
Gyrodata MS Gyro <12-1/4"> (588')(627'912') : 0.63° Inc, 637.00ft MD, 636.98ft TVD, 3.91ft VS

Directional ONE MWD <12-1/4"> (912')(967'-2537') : 3.54° Inc, 977.00ft MD, 976.86ft TVD, 4.69ft VS

Well Profile Data								
Design Comment	MD (ft)	Inc (")	Az (")	TVD (ft)	Local N (ft)	Local E (ft)	DLS ("/100ft)	VS (ft)
Tie On	6461.00	46.700	155.160	6197.22	550.55	1257.09	7.37	-62.52
Proj. To Bottom	6544.00	52.820	155.160	6250.82	493.08	1283.70	7.37	0.67
End of 3D Arc	6667.43	58.582	154.267	6320.34	400.94	1327.25	4.71	102.30
POE	6752.81	66.046	158.957	6360.00	331.58	1357.14	10.00	177.77
Landing Pt.	6980.95	90.000	158.958	6407.00	124.80	1436.69	10.50	399.32
BHL	17380.27	90.000	158.958	6407.00	-9581.04	5170.65	0.00	10798.64

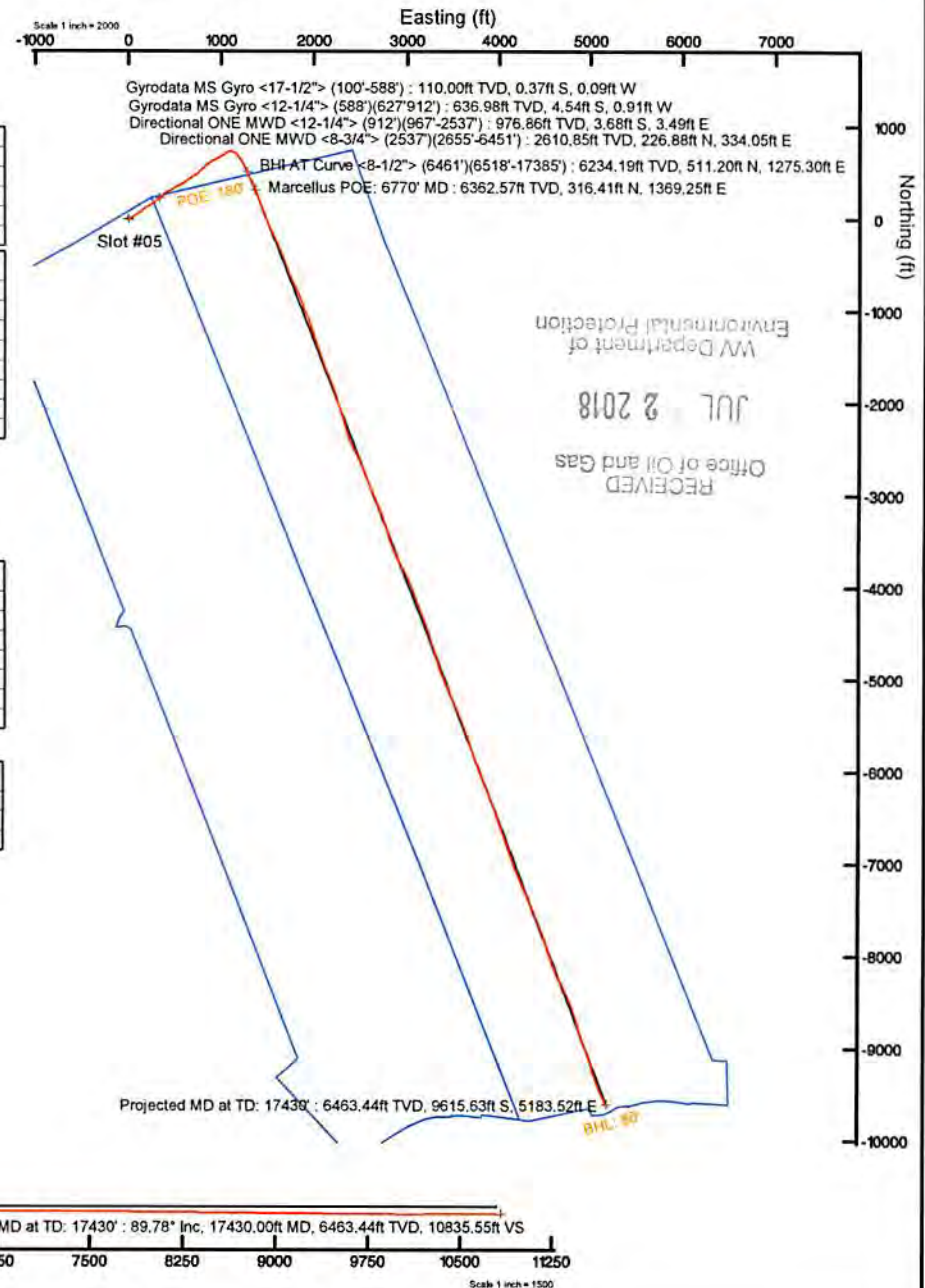
Directional ONE MWD <8-3/4"> (2537')(2655'-6451') : 16.01° Inc, 2665.00ft MD, 2610.85ft TVD, -91.82ft VS

Well Data			
Slot	Well	Wellbore	Wellpath
Slot #05	Anderson Unit 2H	Anderson Unit 2H AWP	Anderson Unit 2H AWP Proj 17430'
Slot #05	Anderson Unit 2H	Anderson Unit 2H PWB	Anderson Unit 2H PWP Rev-A.0



User specified Dip: 66.52° Field: 51877 nT
 Magnetic North is 7.92 degrees West of True North (at 12/25ep/2017)
 Grid North is 0.01 degrees West of True North
 To correct azimuth from True to Grid add 0.01 degrees
 To correct azimuth from Magnetic to Grid subtract 7.91 degrees

BHI AT Curve <8-1/2"> (6461')(6518'-17385') : 52.41° Inc, 6518.00ft MD, 6234.19ft TVD, -19.26ft VS
 Marcellus POE: 6770' MD : 66.57° Inc, 6770.00ft MD, 6362.57ft TVD, 196.27ft VS



Azimuth 158.96° with reference 0.00 N, 0.00 E



Actual Wellpath Report

Anderson Unit 2H AWP Proj: 17430'
Page 1 of 11



REFERENCE WELLPATH IDENTIFICATION			
Operator	ANTERO RESOURCES CORPORATION	Slot	Slot #05
Area	Ritchie County, WV	Well	Anderson Unit 2H
Field	Ritchie	Wellbore	Anderson Unit 2H AWB
Facility	Bachelor Pad		

REPORT SETUP INFORMATION			
Projection System	NAD27 / UTM Zone 17 North, US feet	Software System	WellArchitect® 5.1
North Reference	Grid	User	Delaset
Scale	0.999600	Report Generated	09/Jan/2018 at 08:35
Convergence at slot	0.01° West	Database/Source file	WA_MPL_EasternUS_Defn/Anderson_Unit_2H_AWP_Proj_17430_.xml

WELLPATH LOCATION						
	Local coordinates		Grid coordinates		Geographic coordinates	
	North[ft]	East[ft]	Easting[US ft]	Northing[US ft]	Latitude	Longitude
Slot Location	-18.21	9.43	1636111.05	14275327.30	39°18'41.140"N	81°00'54.800"W
Facility Reference Pt			1636101.62	14275345.50	39°18'41.320"N	81°00'54.920"W
Field Reference Pt			0.00	0.00	0°00'00.000"	85°29'19.301"W

WELLPATH DATUM			
Calculation method	Minimum curvature	Patterson 342 (RKB) to Facility Vertical Datum	25.00ft
Horizontal Reference Pt	Slot	Patterson 342 (RKB) to Mean Sea Level	1218.00ft
Vertical Reference Pt	Patterson 342 (RKB)	Patterson 342 (RKB) to Mud Line at Slot (Slot #05)	25.00ft
MD Reference Pt	Patterson 342 (RKB)	Section Origin	N 0.00, E 0.00 ft
Field Vertical Reference	Mean Sea Level	Section Azimuth	158.96°

RECEIVED
Office of Oil and Gas

JUL 2 2018

WV Department of
Environmental Protection



Actual Wellpath Report

Anderson Unit 2H AWP Proj: 17430

Operator	Area	Field	Facility
ANTERO RESOURCES CORPORATION	Ritchie County, WV	Ritchie	Bachelor Pad
		Anderson Unit 2H	Anderson Unit 2H AWB
		Well	
		Wellbore	
		Slot	Slot #05

REFERENCE Wellpath IDENTIFICATION

WELLPATH DATA (211 stations) † = interpolated/extrapolated station												
MD	Inclination	Azimuth	TVD	Vert Sect	North	East	Grid East	Grid North	Latitude	Longitude	Closure	
(m)	(m)	(m)	(m)	(m)	(m)	(m)	(m)	(m)	(m)	(m)	Dir	
											Closure	
											Dist	
											Rate	
											Turn	
											Comments	
5137.00	17.480	495.04	620.82	-259.58	1637001.59	14275947.86	39°18'47.27"N	81°00'43.46"W	1085.87	55.130	2.25	6.88
5225.00	18.030	58.120	5068.85	-263.79	1637024.79	14275961.30	39°18'47.410"N	81°00'43.171"W	1112.60	55.245	1.42	-4.17
5313.00	18.510	59.130	5152.41	-268.73	1637048.34	14275975.65	39°18'47.552"N	81°00'42.872"W	1140.14	55.327	0.65	1.15
5402.00	18.910	65.170	5236.72	-272.10	1661.92	14275988.95	39°18'47.684"N	81°00'42.551"W	1168.45	55.494	2.22	6.79
5490.00	19.370	60.760	5319.86	-275.12	1657.09	14276002.06	39°18'47.813"N	81°00'42.224"W	1197.05	55.673	1.72	-5.01
5578.00	18.910	58.650	5402.99	-279.76	1689.59	14276016.61	39°18'47.957"N	81°00'41.907"W	1225.83	55.768	0.94	-2.40
5667.00	17.000	57.010	5487.65	-285.03	1704.18	14276031.19	39°18'48.101"N	81°00'41.612"W	1253.24	55.814	2.22	-1.84
5711.00	16.160	54.600	5529.82	-287.88	1711.22	14276038.24	39°18'48.171"N	81°00'41.480"W	1265.79	55.814	2.47	-1.91
5755.00	15.800	53.140	5572.12	-291.03	1718.36	14276045.37	39°18'48.242"N	81°00'41.355"W	1277.90	55.796	1.23	-3.32
5799.00	14.420	54.660	5614.60	-294.02	1725.13	14276052.13	39°18'48.308"N	81°00'41.237"W	1289.36	55.779	3.26	-3.14
5843.00	13.160	65.040	5657.34	-295.72	1730.41	14276057.41	39°18'48.361"N	81°00'41.123"W	1299.78	55.809	6.30	-2.86
5888.00	13.070	78.620	5701.18	-295.21	1733.58	14276060.58	39°18'48.392"N	81°00'41.000"W	1309.54	55.932	6.84	-0.20
5932.00	14.480	88.750	5743.92	-292.51	1734.68	14276061.68	39°18'48.403"N	81°00'40.888"W	1318.76	56.145	6.34	3.20
5976.00	16.480	97.140	5786.32	-287.70	1734.02	14276061.03	39°18'48.396"N	81°00'40.719"W	1328.13	56.449	6.81	4.55
6020.00	19.070	106.800	5828.23	-280.34	1731.17	14276058.17	39°18'48.368"N	81°00'40.553"W	1337.48	56.861	8.90	5.89
6064.00	21.550	114.510	5869.50	-270.16	1725.74	14276052.74	39°18'48.315"N	81°00'40.372"W	1346.49	57.386	8.28	5.64
6108.00	23.450	123.980	5910.16	-257.21	1717.49	14276044.50	39°18'48.233"N	81°00'40.166"W	1354.44	58.013	9.29	4.32
6153.00	26.520	131.300	5950.95	-240.97	1705.85	14276032.86	39°18'48.181"N	81°00'39.995"W	1361.10	58.762	9.67	6.82
6197.00	29.160	138.490	5989.87	-222.22	1691.33	14276018.35	39°18'47.975"N	81°00'39.811"W	1366.10	59.598	9.70	16.34
6241.00	33.170	143.700	6027.52	-200.55	1673.59	14276000.62	39°18'47.799"N	81°00'39.630"W	1369.59	60.540	10.97	9.11
6285.00	35.610	148.790	6063.83	-176.32	1652.93	14275979.96	39°18'47.595"N	81°00'39.454"W	1371.64	61.574	8.57	11.57
6329.00	37.450	152.270	6099.19	-150.42	1630.13	14275957.17	39°18'47.370"N	81°00'39.291"W	1372.35	62.667	6.30	7.91
6373.00	40.380	154.290	6133.42	-122.92	1605.44	14275932.49	39°18'47.126"N	81°00'39.133"W	1372.32	63.821	7.26	4.59
6417.00	43.460	155.330	6166.16	-93.61	1578.84	14275905.90	39°18'46.863"N	81°00'38.974"W	1372.12	65.048	7.18	2.36
6461.00	46.700	155.160	6197.22	-62.52	1550.55	14275877.62	39°18'46.583"N	81°00'38.808"W	1372.37	66.349	7.37	-0.39
6535.00†	53.813	154.610	6244.39	-5.69	1498.89	14275825.98	39°18'46.073"N	81°00'38.502"W	1374.79	68.723	8.66	-3.30
6584.00	57.870	153.100	6271.90	34.68	1472.50	14275789.61	39°18'45.713"N	81°00'38.275"W	1378.83	70.401	8.66	-3.08
6631.00	59.230	152.690	6296.42	74.55	1426.81	14275753.94	39°18'45.360"N	81°00'38.042"W	1384.64	72.046	2.99	-0.87
6677.00	58.900	153.260	6320.07	113.79	1391.67	14275718.80	39°18'45.013"N	81°00'37.814"W	1391.41	73.651	1.28	1.24

MD Inclination Azimuth TVD Vert Sect North East Grid East Grid North Latitude Longitude Closure Dist Closure Dir DLS Build Rate Turn Rate Comments

RECEIVED
Office of Oil and Gas
JUL 2 2018
WV Department of Environmental Protection





Actual Wellpath Report

Anderson Unit 2H AWP Proj: 17430

Page 5 of 11

REFERENCE WELLPATH IDENTIFICATION

Operator	Area	Field	Facility
ANTERO RESOURCES CORPORATION	Ritchie County, WV	Ritchie	Bachelor Pad
	Well	Wellbore	
	Anderson Unit 2H	Anderson Unit 2H AWB	

WELLPATH DATA (211 stations) † = Interpolated/extrapolated station												
MD	Inclination	Azimuth	TVD	Vert Sect	North	East	Grid East	Grid North	Latitude	Longitude	Closure Dist	Closure Dir
ft	ft	ft	ft	ft	ft	ft	ft	ft	ft	ft	ft	ft
6715.00†	62.123	155.137	6338.77	146.75	361.89	1349.53	1637460.04	14275689.04	39°18'44.719"N	81°00'37.631"W	1397.21	74.989
6722.00†	62.720	155.470	6342.01	152.94	356.25	1352.12	1637462.63	14275683.40	39°18'44.663"N	81°00'37.598"W	1398.27	75.239
6770.00†	66.569	157.960	6362.57	196.27	316.41	1369.25	1637479.75	14275643.58	39°18'44.269"N	81°00'37.380"W	1405.34	76.988
6771.00	66.650	158.010	6362.96	197.19	315.56	1369.60	1637480.09	14275642.73	39°18'44.261"N	81°00'37.376"W	1405.48	77.025
6816.00	70.770	160.820	6379.30	239.10	276.32	1384.32	1637494.81	14275603.50	39°18'43.873"N	81°00'37.188"W	1411.63	78.712
6862.00	76.390	161.840	6392.30	283.17	234.53	1398.43	1637508.92	14275561.73	39°18'43.460"N	81°00'37.009"W	1417.96	80.479
6909.00	81.570	160.580	6401.28	329.25	190.87	1413.29	1637523.77	14275518.09	39°18'43.029"N	81°00'36.820"W	1426.12	82.308
6956.00	87.200	159.810	6405.88	375.99	146.89	1429.14	1637539.61	14275474.12	39°18'42.594"N	81°00'36.618"W	1436.66	84.132
7003.00	89.940	158.800	6407.05	422.97	102.94	1445.74	1637556.21	14275430.19	39°18'42.159"N	81°00'36.407"W	1449.40	85.927
7088.00	89.890	158.480	6407.36	517.97	14.46	1480.34	1637580.79	14275341.75	39°18'41.285"N	81°00'35.968"W	1480.41	89.440
7266.00	89.660	155.110	6408.30	705.85	-158.83	1553.14	1637663.57	14275168.53	39°18'39.572"N	81°00'35.040"W	1561.24	95.839
7380.00	89.820	154.710	6408.73	799.62	-243.96	1593.00	1637703.41	14275083.43	39°18'38.731"N	81°00'34.533"W	1611.57	98.707
7475.00	89.720	157.870	6409.11	894.50	-330.93	1631.20	1637741.59	14274996.50	39°18'37.871"N	81°00'34.047"W	1664.43	101.468
7569.00	89.880	160.800	6409.44	988.49	-418.88	1664.37	1637774.75	14274908.59	39°18'37.002"N	81°00'33.625"W	1716.27	104.126
7663.00	89.820	160.760	6409.68	1082.44	-507.64	1695.31	1637805.68	14274819.87	39°18'36.125"N	81°00'33.231"W	1769.68	106.670
7759.00	90.280	155.960	6409.80	1178.41	-596.84	1730.70	1637841.05	14274730.69	39°18'35.243"N	81°00'32.780"W	1830.72	109.027
7854.00	89.880	153.140	6409.47	1273.12	-682.62	1771.52	1637881.86	14274644.96	39°18'34.396"N	81°00'32.261"W	1898.49	111.073
7948.00	89.750	155.060	6409.77	1366.77	-767.17	1812.58	1637922.90	14274560.44	39°18'33.560"N	81°00'31.739"W	1968.25	112.940
8042.00	90.490	159.410	6409.57	1460.71	-853.83	1848.94	1637959.25	14274473.81	39°18'32.703"N	81°00'31.276"W	2036.57	114.787
8133.00	90.800	159.720	6408.55	1551.70	-939.09	1880.71	1637991.01	14274388.58	39°18'31.861"N	81°00'30.872"W	2102.14	116.534
8229.00	90.490	156.570	6407.47	1647.67	-1028.18	1916.44	1638026.72	14274299.53	39°18'30.980"N	81°00'30.417"W	2174.83	118.214
8324.00	89.880	159.790	6407.16	1742.65	-1116.36	1951.75	1638062.01	14274211.39	39°18'30.109"N	81°00'29.968"W	2248.46	119.769
8417.00	90.000	164.190	6407.26	1835.49	-1204.78	1980.50	1638090.75	14274123.00	39°18'29.235"N	81°00'29.602"W	2318.16	121.313
8510.00	89.910	163.480	6407.33	1928.16	-1294.10	2006.39	1638116.63	14274033.72	39°18'28.352"N	81°00'29.272"W	2387.53	122.822
8607.00	89.880	160.490	6407.51	2025.01	-1386.34	2036.38	1638146.61	14273941.52	39°18'27.440"N	81°00'28.891"W	2463.49	124.246
8700.00	89.970	161.050	6407.63	2117.96	-1474.15	2067.01	1638177.23	14273853.74	39°18'26.573"N	81°00'28.501"W	2538.83	125.496
8796.00	89.910	160.400	6407.73	2213.92	-1564.76	2098.70	1638208.91	14273763.16	39°18'25.677"N	81°00'28.098"W	2617.83	126.708
8890.00	89.880	155.970	6407.90	2307.88	-1652.01	2133.63	1638243.82	14273675.95	39°18'24.815"N	81°00'27.653"W	2698.43	127.750
8984.00	89.880	158.450	6408.10	2401.83	-1738.67	2170.03	1638280.21	14273589.33	39°18'23.958"N	81°00'27.190"W	2780.65	128.702

Turn Rate Comments

Marcellus POE: 6770' MD

8.06

9.16

12.22

6.24

2.22

-2.68

11.02

-1.64

-2.15

5.83

11.98

12.09

6.21

85.927

1449.40

1480.41

1517.21

1561.24

1611.57

1664.43

1716.27

1769.68

1830.72

1898.49

1968.25

2036.57

2174.83

2248.46

2318.16

2387.53

2463.49

2538.83

2617.83

2698.43

2780.65

2861.43

2942.21

3023.00

3103.79

3184.58

3265.37

3346.16

3426.95

3507.74

3588.53

3669.32

3750.11

3830.90

3911.69

3992.48

4073.27

4154.06

4234.85

4315.64

4396.43

4477.22

4558.01

4638.80

4719.59

4800.38

4881.17

4961.96

5042.75

5123.54

5204.33

5285.12

5365.91

5446.70

5527.49

5608.28

5689.07

5769.86

5850.65

5931.44

6012.23

6093.02

6173.81

6254.60

6335.39

6416.18

6496.97

6577.76

6658.55

6739.34

6820.13

6900.92

6981.71

7062.50

7143.29

7224.08

7304.87

7385.66

7466.45

7547.24

7628.03

7708.82

7789.61

7870.40

7951.19

8031.98

8112.77

8193.56

8274.35

8355.14

8435.93

8516.72

8597.51

8678.30

8759.09

8839.88

8920.67

9001.46

9082.25

9163.04

9243.83

9324.62

9405.41

9486.20

9566.99

9647.78

9728.57

9809.36

9890.15

9970.94

10051.73

10132.52

10213.31

10294.10

10374.89

10455.68

10536.47

10617.26

10698.05

10778.84

10859.63

10940.42

11021.21

11102.00

11182.79

11263.58

11344.37

11425.16

11505.95

11586.74

11667.53



Actual Wellpath Report

Anderson Unit 2H AWP Proj: 17430



Operator	ANTERO RESOURCES CORPORATION	Slot	Slot #05
Area	Ritchie County, WV	Well	Anderson Unit 2H
Field	Ritchie	Wellbore	Anderson Unit 2H AWB
Facility	Bachelor Pad		

WELLPATH DATA (211 stations)												
MD	Inclination	Azimuth	TVD	Vert Sect	North	East	Grid East	Grid North	Latitude	Longitude	Closure Dist	Closure Dir
ft	ft	ft	ft	ft	ft	ft	ft	ft	ft	ft	ft	ft
9078.00	89.910	160.950	6408.27	-1826.82	2202.64	1638312.81	14273501.21	39°18'23.08"N	81°00'26.77"W	2861.63	129.672	2.66
9174.00	89.940	162.970	6408.40	-1918.10	2232.37	1638342.52	14273409.97	39°18'22.185"N	81°00'26.397"W	2943.22	130.670	2.10
9267.00	89.880	163.070	6408.54	-2007.04	2259.53	1638369.67	14273321.06	39°18'21.306"N	81°00'26.051"W	3022.20	131.613	0.13
9360.00	89.910	162.100	6408.71	-2095.78	2287.36	1638397.49	14273232.36	39°18'20.429"N	81°00'25.697"W	3102.31	132.497	1.04
9457.00	89.940	162.000	6408.84	-2188.06	2317.26	1638427.38	14273140.12	39°18'19.517"N	81°00'25.317"W	3187.05	133.357	0.03
9549.00	89.820	164.120	6409.03	-2276.06	2344.06	1638454.17	14273052.15	39°18'18.647"N	81°00'24.976"W	3267.27	134.157	2.30
9644.00	89.970	161.680	6409.21	-2366.85	2371.99	1638482.09	14272961.40	39°18'17.750"N	81°00'24.620"W	3350.87	134.938	2.57
9738.00	89.690	155.680	6409.49	-2454.38	2406.15	1638516.24	14272873.90	39°18'16.885"N	81°00'24.186"W	3437.09	135.568	6.39
9833.00	89.480	152.230	6410.18	-2539.22	2447.86	1638557.92	14272788.60	39°18'16.041"N	81°00'23.655"W	3527.35	136.055	3.64
9927.00	89.350	154.540	6411.14	-2628.75	2489.97	1638600.01	14272704.61	39°18'15.211"N	81°00'23.191"W	3617.18	136.489	2.46
10020.00	89.450	158.600	6412.11	-2709.05	2526.94	1638636.97	14272619.33	39°18'14.368"N	81°00'22.649"W	3704.64	136.992	4.37
10115.00	89.420	158.260	6413.05	-2797.40	2561.86	1638671.88	14272531.02	39°18'13.494"N	81°00'22.204"W	3793.23	137.517	0.11
10209.00	89.690	158.640	6413.78	-2884.82	2596.39	1638706.39	14272443.63	39°18'12.630"N	81°00'21.765"W	3881.16	138.012	0.50
10303.00	89.690	157.980	6414.29	-2972.17	2631.13	1638741.12	14272356.33	39°18'11.767"N	81°00'21.323"W	3969.46	138.483	0.70
10397.00	89.660	157.690	6414.82	-3059.22	2666.59	1638776.57	14272269.31	39°18'10.907"N	81°00'20.872"W	4058.27	138.923	0.31
10492.00	89.510	158.720	6415.51	-3147.42	2701.86	1638811.82	14272181.14	39°18'10.035"N	81°00'20.423"W	4148.05	139.356	1.10
10588.00	89.660	158.690	6416.19	-3235.00	2736.00	1638845.95	14272093.59	39°18'09.169"N	81°00'19.989"W	4236.85	139.777	0.16
10679.00	89.780	161.160	6416.64	-3322.35	2767.92	1638877.85	14272006.29	39°18'08.306"N	81°00'19.583"W	4324.27	140.202	2.66
10774.00	89.750	163.420	6417.03	-3412.84	2796.81	1638906.74	14271915.83	39°18'07.412"N	81°00'19.215"W	4412.44	140.665	2.38
10868.00	89.720	161.400	6417.47	-3502.44	2825.22	1638935.13	14271826.27	39°18'06.526"N	81°00'18.854"W	4499.88	141.109	2.15
10962.00	89.540	158.450	6418.07	-3590.71	2857.48	1638967.38	14271738.03	39°18'05.654"N	81°00'18.443"W	4588.94	141.487	3.14
11056.00	89.380	154.060	6418.96	-3676.73	2895.32	1639005.20	14271652.04	39°18'04.804"N	81°00'17.962"W	4679.87	141.781	4.67
11150.00	89.480	152.180	6419.90	-3760.57	2937.82	1639047.68	14271568.24	39°18'03.975"N	81°00'17.421"W	4772.07	142.002	2.00
11245.00	89.450	151.190	6420.78	-3844.20	2982.87	1639092.72	14271484.65	39°18'03.148"N	81°00'16.848"W	4865.73	142.191	1.04
11339.00	89.350	155.580	6421.77	-3928.21	3024.97	1639134.80	14271400.67	39°18'02.318"N	81°00'16.312"W	4957.95	142.401	4.67
11433.00	89.420	161.160	6422.78	-4015.55	3069.61	1639169.42	14271313.36	39°18'01.455"N	81°00'15.872"W	5048.35	142.685	5.94
11528.00	89.380	161.420	6423.77	-4105.53	3090.08	1639199.88	14271223.42	39°18'00.566"N	81°00'15.484"W	5138.48	143.033	0.28
11622.00	89.450	158.690	6424.73	-4193.88	3122.14	1639231.93	14271135.11	39°17'59.692"N	81°00'15.076"W	5228.42	143.334	2.91
11716.00	89.450	159.600	6425.63	-4281.71	3155.60	1639265.38	14271047.31	39°17'58.824"N	81°00'14.651"W	5318.92	143.610	0.97
11810.00	89.450	159.910	6426.54	-4369.90	3188.13	1639297.89	14270969.15	39°17'57.953"N	81°00'14.237"W	5409.27	143.887	0.33

MD	Inclination	Azimuth	TVD	Vert Sect	North	East	Grid East	Grid North	Latitude	Longitude	Closure Dist	Closure Dir	DLS	Build Rate	Turn Rate	Comments
ft	ft	ft	ft	ft	ft	ft	ft	ft	ft	ft	ft	ft	ft/100ft	ft/100ft	ft/100ft	ft/100ft

RECEIVED
Office of Oil and Gas
JUL 2 2018
WV Department of
Environmental Protection



Actual Wellpath Report

Anderson Unit 2H AWP Proj: 17430

Page 7 of 11



Operator	ANTERO RESOURCES CORPORATION	Slot	Slot #05
Area	Ritchie County, WV	Well	Anderson Unit 2H
Field	Ritchie	Wellbore	Anderson Unit 2H AWB
Facility	Bachelor Pad		

WELLPATH DATA (211 stations)												
MD	Inclination	Azimuth	TVD	Vert Sect	North	East	Grid East	Grid North	Latitude	Longitude	Closure Dist	Closure Dir
(ft)	(°)	(°)	(ft)	(ft)	(ft)	(ft)	(ft)	(ft)	(°)	(°)	(ft)	(°)
11904.00	89.420	160.660	6427.46	5317.13	-4458.39	3219.83	1639329.59	14270870.70	39°17'57.07"N	81°00'13.83"W	5499.50	144.163
11998.00	89.350	162.070	6428.47	5411.04	-4547.45	3249.87	1639359.61	14270781.67	39°17'56.198"N	81°00'13.451"W	5589.36	144.448
12093.00	89.450	162.260	6429.47	5505.88	-4637.88	3278.96	1639388.69	14270691.28	39°17'55.304"N	81°00'13.081"W	5679.92	144.740
12187.00	89.540	164.250	6430.30	5599.61	-4727.89	3306.04	1639415.76	14270601.31	39°17'54.414"N	81°00'12.737"W	5769.13	145.036
12281.00	89.420	164.690	6431.15	5693.18	-4818.43	3331.29	1639441.00	14270510.81	39°17'53.520"N	81°00'12.416"W	5857.88	145.341
12374.00	89.450	159.680	6432.07	5766.01	-4906.91	3359.81	1639469.51	14270422.36	39°17'52.645"N	81°00'12.053"W	5946.94	145.600
12469.00	89.480	157.030	6432.95	5880.99	-4995.20	3394.85	1639504.53	14270334.10	39°17'51.772"N	81°00'11.607"W	6039.62	145.799
12563.00	89.450	156.440	6433.83	5974.91	-5081.55	3431.97	1639541.64	14270247.79	39°17'50.919"N	81°00'11.135"W	6131.94	145.966
12657.00	89.380	154.920	6434.79	6068.75	-5167.21	3470.68	1639580.34	14270162.17	39°17'50.072"N	81°00'10.642"W	6224.60	146.112
12752.00	89.690	156.050	6435.66	6163.57	-5253.64	3510.10	1639619.74	14270075.77	39°17'49.218"N	81°00'10.141"W	6318.35	146.262
12846.00	89.820	156.490	6435.96	6257.47	-5339.69	3547.93	1639657.55	14269989.75	39°17'48.368"N	81°00'09.660"W	6410.93	146.398
12938.00	89.510	158.130	6436.50	6349.42	-5424.70	3583.41	1639693.02	14269904.91	39°17'47.529"N	81°00'09.208"W	6501.29	146.552
13033.00	89.690	161.170	6437.17	6444.40	-5513.62	3616.44	1639726.04	14269815.89	39°17'46.649"N	81°00'08.788"W	6593.84	146.739
13129.00	89.780	161.400	6437.61	6540.32	-5604.54	3647.25	1639756.83	14269725.00	39°17'45.750"N	81°00'08.396"W	6686.80	146.945
13224.00	89.860	159.730	6437.92	6635.28	-5694.13	3678.86	1639788.43	14269635.46	39°17'44.864"N	81°00'07.994"W	6779.16	147.134
13318.00	89.850	160.740	6438.16	6729.26	-5782.59	3710.64	1639820.20	14269547.03	39°17'43.990"N	81°00'07.590"W	6870.75	147.312
13411.00	89.750	160.470	6438.49	6822.22	-5870.31	3741.53	1639851.07	14269459.35	39°17'43.123"N	81°00'07.197"W	6961.29	147.488
13505.00	89.820	158.820	6438.84	6916.21	-5958.44	3774.22	1639883.75	14269371.25	39°17'42.252"N	81°00'06.781"W	7053.21	147.649
13600.00	89.820	158.720	6439.14	7011.21	-6046.99	3808.62	1639918.14	14269282.74	39°17'41.377"N	81°00'06.344"W	7146.45	147.796
13695.00	89.760	156.130	6439.49	7106.16	-6134.70	3845.09	1639954.59	14269195.06	39°17'40.510"N	81°00'05.880"W	7240.12	147.921
13789.00	89.780	157.950	6439.88	7200.11	-6221.25	3881.75	1639991.24	14269108.55	39°17'39.655"N	81°00'05.413"W	7332.94	148.038
13885.00	89.910	159.290	6440.14	7296.10	-6310.64	3916.75	1640026.22	14269019.19	39°17'38.771"N	81°00'04.968"W	7427.32	148.174
13978.00	89.850	160.550	6440.33	7389.09	-6397.99	3948.68	1640058.14	14268931.88	39°17'37.908"N	81°00'04.562"W	7518.40	148.318
14070.00	89.880	161.910	6440.55	7481.01	-6485.09	3978.28	1640087.73	14268844.81	39°17'37.047"N	81°00'04.185"W	7608.10	148.473
14166.00	89.540	160.200	6441.04	7576.94	-6575.89	4009.45	1640118.88	14268754.05	39°17'36.149"N	81°00'03.789"W	7701.82	148.629
14261.00	89.510	160.270	6441.83	7671.92	-6665.29	4041.57	1640151.00	14268664.69	39°17'35.266"N	81°00'03.380"W	7794.89	148.769
14355.00	89.380	159.920	6442.74	7765.89	-6753.67	4073.57	1640182.98	14268576.34	39°17'34.392"N	81°00'02.973"W	7887.08	148.903
14449.00	89.420	160.990	6443.72	7859.85	-6842.24	4105.02	1640214.42	14268487.80	39°17'33.517"N	81°00'02.573"W	7979.19	149.038
14543.00	89.480	161.410	6444.62	7953.78	-6931.23	4135.31	1640244.70	14268398.86	39°17'32.637"N	81°00'02.188"W	8071.10	149.179
14638.00	89.540	159.660	6445.43	8048.74	-7020.79	4166.96	1640276.34	14268309.33	39°17'31.752"N	81°00'01.786"W	8164.26	149.310

MD	Inclination	Azimuth	TVD	Vert Sect	North	East	Grid East	Grid North	Latitude	Longitude	Closure Dist	Closure Dir	DLS	Build Rate	Turn Rate	Comments
(ft)	(°)	(°)	(ft)	(ft)	(ft)	(ft)	(ft)	(ft)	(°)	(°)	(ft)	(°)	(ft/100ft)	(ft/100ft)	(ft/100ft)	(ft/100ft)
14638.00	89.540	159.660	6445.43	8048.74	-7020.79	4166.96	1640276.34	14268309.33	39°17'31.752"N	81°00'01.786"W	8164.26	149.310	1.84	0.06	-1.84	
14543.00	89.480	161.410	6444.62	7953.78	-6931.23	4135.31	1640244.70	14268398.86	39°17'32.637"N	81°00'02.188"W	8071.10	149.179	0.45	0.06	0.45	
14449.00	89.420	160.990	6443.72	7859.85	-6842.24	4105.02	1640214.42	14268487.80	39°17'33.517"N	81°00'02.573"W	7979.19	149.038	1.14	0.04	1.14	
14355.00	89.380	159.920	6442.74	7765.89	-6753.67	4073.57	1640182.98	14268576.34	39°17'34.392"N	81°00'02.973"W	7887.08	148.903	-0.37	-0.14	-0.37	
14261.00	89.510	160.270	6441.83	7671.92	-6665.29	4041.57	1640151.00	14268664.69	39°17'35.266"N	81°00'03.380"W	7794.89	148.769	0.07	-0.03	0.07	
14166.00	89.540	160.200	6441.04	7576.94	-6575.89	4009.45	1640118.88	14268754.05	39°17'36.149"N	81°00'03.789"W	7701.82	148.629	-1.78	-0.36	-1.78	
14070.00	89.880	161.910	6440.55	7481.01	-6485.09	3978.28	1640087.73	14268844.81	39°17'37.047"N	81°00'04.185"W	7608.10	148.473	1.48	0.03	1.48	
13978.00	89.850	160.550	6440.33	7389.09	-6397.99	3948.68	1640058.14	14268931.88	39°17'37.908"N	81°00'04.562"W	7518.40	148.318	-1.36	-0.06	-1.36	
13885.00	89.910	159.290	6440.14	7296.10	-6310.64	3916.75	1640026.22	14269019.19	39°17'38.771"N	81°00'04.968"W	7427.32	148.174	1.40	0.14	1.40	
13789.00	89.780	157.950	6439.88	7200.11	-6221.25	3881.75	1639991.24	14269108.55	39°17'39.655"N	81°00'05.413"W	7332.94	148.038	1.94	0.03	1.94	
13695.00	89.760	156.130	6439.49	7106.16	-6134.70	3845.09	1639954.59	14269195.06	39°17'40.510"N	81°00'05.880"W	7240.12	147.921	-2.73	-0.07	-2.73	
13600.00	89.820	158.720	6439.14	7011.21	-6046.99	3808.62	1639918.14	14269282.74	39°17'41.377"N	81°00'06.344"W	7146.45	147.796	0.11	0.00	0.11	
13505.00	89.820	158.820	6438.84	6916.21	-5958.44	3774.22	1639883.75	14269371.25	39°17'42.252"N	81°00'06.781"W	7053.21	147.649	1.76	0.07	-1.76	
13411.00	89.750	160.470	6438.49	6822.22	-5870.31	3741.53	1639851.07	14269459.35	39°17'43.123"N	81°00'07.197"W	6961.29	147.488	-0.11	-0.11	-0.28	
13318.00	89.850	160.740	6438.16	6729.26	-5782.59	3710.64	1639820.20	14269547.03	39°17'43.990"N	81°00'07.590"W	6870.75	147.312	1.07	0.00	1.07	
13224.00	89.860	159.730	6437.92	6635.28	-5694.13	3678.86	1639788.43	14269635.46	39°17'44.864"N	81°00'07.994"W	6779.16	147.134	-1.76	0.07	-1.76	
13129.00	89.780	161.400	6437.61	6540.32	-5604.54	3647.25	1639756.83	14269725.00	39°17'45.750"N	81°00'08.396"W	6686.80	146.945	0.26	0.09	0.24	
13033.00	89.690	161.170	6437.17	6444.40	-5513.62	3616.44	1639726.04	14269815.89	39°17'46.649"N	81°00'08.788"W	6593.84	146.739	3.21	0.19	3.20	
12938.00	89.510	158.130	6436.50	6349.42	-5424.70	3583.41	1639693.02	14269904.91	39°17'47.529"N	81°00'09.208"W	6501.29	146.552	-1.81	-0.34	-1.78	
12846.00	89.820	156.490	6435.96	6257.47	-5339.69	3547.93	1639657.55	14269989.75	39°17'48.368"N	81°00'09.660"W	6410.93	146.398	0.49	0.14	0.47	
12752.00	89.690	156.050	6435.66	6163.57	-5253.64	3510.10	1639619.74	14270075.77	39°17'49.218"N	81°00'10.141"W	6318.35	146.262	1.23	0.33	1.19	
12657.00	89.380	154.920	6434.79	6068.75	-5167.21	3470.68	1639580.34	14270162.17	39°17'50.072"N	81°00'10.642"W	6224.60	146.112	-1.62	-0.07	-1.62	
12563.00	89.450	156.440	6433.83	5974.91	-5081.55	3431.97	1639541.64	14270247.79	39°17'50.919"N	81°00'11.135"W	6131.94	145.966	0.63	-0.03	-0.63	
12469.00	89.480	157.030	6432.95	5880.99	-4995.20	3394.85	1639504.53	14270334.10	39°17'51.772"N	81°00'11.607"W	6039.62	145.799	2.79	0.03	-2.79	
12374.00	89.450	159.680	6432.07	5766.01	-4906.91	3359.81	1639469.51	14270422.36	39°17'52.645"N	81°00'12.053"W	5946.94	145.600	5.28	0.03	-5.28	
12281.00	89.420	164.690	6431.15	5693.18	-4818.43	3331.29	1639441.00	14270510.81	39°17'53.520"N	81°00'12.416"W	5857.88	145.341	0.38	-0.13	0.36	
12187.00	89.540	164.250	6430.30	5599.61	-4727.89	3306.04	1639415.76	14270601.31	39°17'54.414"N	81°00'12.737"W	5769.13	145.036	2.12	0.10	2.12	
12093.00	89.450	162.260	6429.47	5505.88	-4637.88	3278.96	1639388.69	14270691.28	39°17'55.304"N	81°00'13.081"W	5679.92	144.740	0.23	0.11	0.20	
11998.00	89.350	162.070	6428.47	5411.04	-4547.45	3249.87	1639359.61	14								



Actual Wellpath Report

Anderson Unit 2H AWP Proj: 17430
Page 8 of 11



Operator	Area	Field	Facility
ANTERO RESOURCES CORPORATION	Ritchie County, WV	Ritchie	Bachelor Pad
	Anderson Unit 2H	Well	
	Anderson Unit 2H AWP	Wellbore	

REFERENCE WELLPATH IDENTIFICATION

MD	Inclination	Azimuth	TVD	Vert Sect	North	East	Grid East	Grid North	Latitude	Longitude	Closure Dist	Closure Dir	DLS	Build Rate	Turn Rate	Comments
14731.00	89.540	158.330	6446.18	-7107.60	4200.30	1640309.66	1426822.55	39°17'30.894"N	81°00'01.362"W	8255.94	149.419	1.43	0.00	-1.43	0.00	
14828.00	89.450	155.040	6447.04	-7196.67	4238.68	1640348.03	1426813.52	39°17'30.014"N	81°00'00.873"W	8352.15	149.503	3.39	-0.09	-3.39	0.00	
14919.00	89.380	155.340	6447.97	-7279.43	8329.43	1640386.19	14268050.96	39°17'29.197"N	81°00'00.388"W	8442.71	149.564	0.34	-0.08	0.33	0.00	
15014.00	89.480	154.950	6448.91	-7365.46	4316.79	1640426.11	14267964.80	39°17'28.346"N	80°59'59.880"W	8537.26	149.626	0.42	-0.11	-0.41	0.00	
15108.00	89.480	157.250	6449.76	-7451.39	4354.87	1640464.17	14267878.90	39°17'27.496"N	80°59'59.996"W	8630.65	149.696	2.45	0.00	2.45	0.00	
15199.00	89.450	158.360	6450.61	-7535.64	4389.25	1640498.53	14267794.68	39°17'26.664"N	80°59'58.958"W	8720.75	149.781	1.22	-0.03	1.22	0.00	
15295.00	89.420	158.010	6451.56	-7624.76	4424.92	1640534.19	14267705.60	39°17'25.783"N	80°59'58.505"W	8815.72	149.872	0.37	-0.03	-0.36	0.00	
15389.00	89.350	161.110	6452.51	-7712.19	4459.44	1640568.69	14267618.21	39°17'24.919"N	80°59'58.066"W	8908.67	149.962	0.95	0.00	0.95	0.00	
15484.00	89.350	161.110	6453.53	-7801.45	4491.92	1640601.16	14267528.98	39°17'24.036"N	80°59'57.653"W	9002.22	150.068	2.33	-0.07	2.33	0.00	
15579.00	89.450	162.260	6454.53	-7891.64	4521.77	1640631.00	14267438.83	39°17'23.145"N	80°59'57.273"W	9095.29	150.188	1.22	-0.11	1.21	0.00	
15673.00	89.350	161.060	6455.51	-7980.85	4551.34	1640660.56	14267349.65	39°17'22.263"N	80°59'56.897"W	9187.42	150.305	1.28	-0.11	-1.28	0.00	
15767.00	89.450	161.250	6456.50	-8069.81	4581.71	1640690.91	14267260.73	39°17'21.384"N	80°59'56.511"W	9279.76	150.414	0.23	0.11	0.20	0.00	
15862.00	89.540	159.160	6457.33	-8159.19	4613.88	1640723.08	14267171.39	39°17'20.501"N	80°59'56.101"W	9373.38	150.513	2.21	0.09	-2.21	0.00	
15956.00	89.450	154.440	6458.16	-8245.55	4650.91	1640760.09	14267085.06	39°17'19.647"N	80°59'55.630"W	9466.79	150.575	5.01	-0.10	-5.01	0.00	
16050.00	89.420	150.820	6459.09	-8329.01	4694.11	1640803.28	14267001.63	39°17'18.822"N	80°59'55.081"W	9560.71	150.595	3.85	-0.03	-3.85	0.00	
16144.00	88.800	154.540	6460.55	-8412.50	4737.24	1640846.39	14266918.18	39°17'17.997"N	80°59'54.532"W	9654.62	150.615	4.01	-0.66	3.96	0.00	
16239.00	89.380	158.490	6462.06	-8499.60	4775.09	1640884.22	14266831.11	39°17'17.136"N	80°59'54.051"W	9749.09	150.673	4.20	0.61	4.16	0.00	
16333.00	89.480	159.780	6462.99	-8587.43	4808.57	1640917.68	14266743.31	39°17'16.268"N	80°59'53.625"W	9842.07	150.753	1.38	0.11	1.37	0.00	
16427.00	90.310	161.880	6463.17	-8676.22	4839.43	1640948.54	14266654.57	39°17'15.390"N	80°59'53.233"W	9934.63	150.848	2.40	0.88	2.23	0.00	
16522.00	89.690	165.150	6463.17	-8767.30	4866.39	1640975.48	14266563.52	39°17'14.490"N	80°59'52.890"W	10027.32	150.967	3.50	-0.65	3.44	0.00	
16616.00	90.090	164.110	6463.35	-8857.93	4891.30	1641000.38	14266472.92	39°17'13.594"N	80°59'52.573"W	10118.69	151.093	1.19	0.43	-1.11	0.00	
16710.00	89.850	154.840	6463.40	-8945.87	4924.22	1641033.29	14266385.02	39°17'12.725"N	80°59'52.155"W	10211.59	151.170	9.86	-0.26	-9.86	0.00	
16805.00	90.340	157.120	6463.24	-9032.64	4962.89	1641071.94	14266298.29	39°17'11.868"N	80°59'51.663"W	10306.25	151.214	2.45	-0.10	2.40	0.00	
16899.00	164.680	6462.75	10306.08	-9121.40	4993.63	1641102.67	14266209.57	39°17'10.990"N	80°59'51.272"W	10398.86	151.301	8.04	-0.10	8.04	0.00	
16993.00	89.750	163.980	6462.75	-9211.90	5019.01	1641128.05	14266119.10	39°17'10.096"N	80°59'50.949"W	10490.46	151.417	0.92	-0.53	-0.74	0.00	
17087.00	161.900	6463.14	10493.44	-9301.76	5046.59	1641155.61	14266029.27	39°17'09.208"N	80°59'50.598"W	10582.67	151.518	2.21	0.03	-2.21	0.00	
17182.00	90.310	158.830	6463.07	-9391.23	5078.51	1641187.52	14265939.85	39°17'08.323"N	80°59'50.193"W	10676.44	151.597	3.28	0.56	-3.23	0.00	
17276.00	89.690	156.440	6463.07	-9478.15	5114.27	1641223.27	14265852.96	39°17'07.464"N	80°59'49.738"W	10769.92	151.649	2.63	-0.66	-2.54	0.00	
17372.00	90.090	151.970	6463.25	-9564.56	5156.04	1641265.01	14265766.58	39°17'06.610"N	80°59'49.207"W	10865.80	151.672	4.67	0.42	-4.66	0.00	
17385.00	89.780	151.680	6463.26	-9575.02	5162.18	1641271.15	14265755.13	39°17'06.0947"N	80°59'49.129"W	10878.80	151.672	3.27	-2.38	-2.23	0.00	

WELLPATH DATA (211 stations)

RECEIVED
Office of Oil and Gas
JUL 2 2018
WV Department of Environmental Protection



Actual Wellpath Report

Anderson Unit 2H AWP Proj: 17430'
Page 9 of 11



REFERENCE WELLPATH IDENTIFICATION			
Operator	ANTERO RESOURCES CORPORATION	Slot	Slot #05
Area	Ritchie County, WV	Well	Anderson Unit 2H
Field	Ritche	Wellbore	Anderson Unit 2H AWB
Facility	Bachelor Pad		

WELLPATH DATA (211 stations)																
MD	Inclination	Azimuth	TVD	Vert Sect	North	East	Grid East	Grid North	Latitude	Longitude	Closure Dist	Closure Dir	DLS	Build Rate	Turn Rate	Comments
[ft]	[°]	[°]	[ft]	[ft]	[ft]	[ft]	[US ft]	[US ft]			[ft]	[°]	[°/100ft]	[°/100ft]	[°/100ft]	
17430.00	89.780	151.680	6463.44	10835.55	-9615.63	5183.52	1641292.49	14265715.53	39°17'06.105"N	80°59'48.857"W	10923.80	151.672	0.00	0.00	0.00	Projected MD at TD: 17430'

HOLE & CASING SECTIONS - Ref Wellbore: Anderson Unit 2H AWB Ref Wellpath: Anderson Unit 2H AWP Proj: 17430'									
String/Diameter	Start MD	End MD	Interval	Start TVD	End TVD	Start N/S	Start E/W	End N/S	End E/W
	[ft]	[ft]	[ft]	[ft]	[ft]	[ft]	[ft]	[ft]	[ft]
20in Conductor	25.00	105.00	80.00	25.00	105.00	0.00	0.00	-0.33	-0.08
17.5in Open Hole	105.00	628.10	523.10	105.00	628.08	-0.33	-0.08	-4.46	-0.86
13.375in Casing Surface	25.00	628.10	603.10	25.00	628.08	0.00	0.00	-4.46	-0.86
12.25in Open Hole	628.10	2577.70	1949.60	628.08	2527.11	-4.46	-0.86	210.90	315.28
9.625in Casing Intermediate	25.00	2577.70	2552.70	25.00	2527.11	0.00	0.00	210.90	315.28
8.75in Open Hole	2577.70	6544.00	3966.30	2527.11	6249.66	210.90	315.28	492.30	1284.22
8.5in Open Hole	6544.00	17430.00	10886.00	6249.66	6463.44	492.30	1284.22	-9615.63	5183.52
5.5in Casing Production	25.00	17430.00	17405.00	25.00	6463.44	0.00	0.00	-9615.63	5183.52

TARGETS								
Name	TVD	North	East	Grid East	Grid North	Latitude	Longitude	Shape
	[ft]	[ft]	[ft]	[US ft]	[US ft]			
Anderson Unit 2H POE Rev-2	6360.00	331.58	1357.14	1637467.64	14275658.74	39°18'44.419"N	81°00'37.534"W	point
Anderson Unit 2H BHL Rev-3	6407.00	-9581.04	5170.65	1641279.62	14265750.11	39°17'06.447"N	80°59'49.021"W	point
Anderson Unit 2H LP Rev-1	6407.00	124.80	1436.69	1637547.16	14275452.05	39°18'42.375"N	81°00'36.522"W	point

RECEIVED
 Office of Oil and Gas
 JUL 2 2018
 WV Department of
 Environmental Protection



Actual Wellpath Report

Anderson Unit 2H AWP Proj: 17430'
Page 10 of 11



REFERENCE WELLPATH IDENTIFICATION			
Operator	ANTERO RESOURCES CORPORATION	Slot	Slot #05
Area	Ritchie County, WV	Well	Anderson Unit 2H
Field	Ritchie	Wellbore	Anderson Unit 2H AWB
Facility	Bachelor Pad		

WELLPATH COMPOSITION - Ref Wellbore: Anderson Unit 2H AWB Ref Wellpath: Anderson Unit 2H AWP Proj: 17430'				
Start MD [ft]	End MD [ft]	Positional Uncertainty Model	Log Name/Comment	Wellbore
25.00	598.00	Gyrodata standard - Drop gyro or Multi-shot	01 Gyrodata MS Gyro <17-1/2">(100'-588')	Anderson Unit 2H AWB
598.00	922.00	Gyrodata standard - Drop gyro or Multi-shot	02 Gyrodata MS Gyro <12-1/4">(588')(627'-912')	Anderson Unit 2H AWB
922.00	2547.00	ISCWSA MWD, Rev. 4 (Standard)	03 Directional ONE MWD <12-1/4">(912')(967'-2537')	Anderson Unit 2H AWB
2547.00	6461.00	ISCWSA MWD, Rev. 4 (Standard)	04 Directional ONE MWD <8-3/4">(2537')(2655'-6451')	Anderson Unit 2H AWB
6461.00	17385.00	BHI AutoTrak Curve (Short)	05 BHI AT Curve <8-1/2"> (6461')(6518'-17385')	Anderson Unit 2H AWB
17385.00	17430.00	Blind Drilling (std)	Projection to bit	Anderson Unit 2H AWB

RECEIVED
Office of Oil and Gas

JUL 2 2018

WV Department of
Environmental Protection



Actual Wellpath Report
 Anderson Unit 2H AWP Proj: 17430'
 Page 11 of 11



09/07/2018

REFERENCE WELLPATH IDENTIFICATION			
Operator	ANTERO RESOURCES CORPORATION	Slot	Slot #05
Area	Ritchie County, WV	Well	Anderson Unit 2H
Field	Ritchie	Wellbore	Anderson Unit 2H AWP
Facility	Bachelor Pad		

COMMENTS

Wellpath general comments
 API: 47-085-10310-0000
 BHI Job #: 8762316
 Rlg: Patterson 342
 Duration: 09/20/2017-09/26/2017
 Gyrodala MS Gyro <17-1/2"> (100'-588')
 Gyrodala MS Gyro <12-1/4"> (588')(627'912')
 Directional ONE MWD <12-1/4"> (912')(967'-2537')
 Directional ONE MWD <8-3/4"> (2537')(2655'-6451')
 BHI AT Curve <8-1/2"> (6461')(6518'-17385')
 Middlesex: 6535' MD
 Burkett: 6715' MD
 Marcellus POE: 6770' MD
 Projected MD at TD: 17430'

RECEIVED
 Office of Oil and Gas
 JUL 2 2018
 WV Department of
 Environmental Protection