



Where energy meets innovation.

Actual Wellpath Report

PUL-96 515967 AWP Proj: 12348'

Page 1 of 10



REFERENCE WELLPATH IDENTIFICATION			
Operator	EQT	Slot	Slot 515967
Area	Ritchie County, WV	Well	PUL-96 515967
Field	Ritchie	Wellbore	PUL-96 515967 AWB
Facility	PUL-96 Pad		

REPORT SETUP INFORMATION			
Projection System	NAD27 / Lambert West Virginia SP, Northern Zone (4701), US feet	Software System	WellArchitect® 5.0
North Reference	Grid	User	Edsaryar
Scale	0.999967	Report Generated	09/Aug/2017 at 21:11
Convergence at slot	0.95° West	Database/Source file	WA_MPL_EASTERNUS_Defn/PUL-96_515967_AWP_Proj_12348_.xml

WELLPATH LOCATION						
	Local coordinates		Grid coordinates		Geographic coordinates	
	North[ft]	East[ft]	Easting[US ft]	Northing[US ft]	Latitude	Longitude
Slot Location	118.62	64.46	1578957.28	262524.85	39°12'40.409"N	80°59'09.503"W
Facility Reference Pt			1578892.82	262406.23	39°12'39.227"N	80°59'10.296"W
Field Reference Pt			609601.22	0.00	38°23'48.753"N	84°21'09.765"W

WELLPATH DATUM			
Calculation method	Minimum curvature	Savanna 655 (RKB) to Facility Vertical Datum	1199.00ft
Horizontal Reference Pt	Slot	Savanna 655 (RKB) to Mean Sea Level	1199.00ft
Vertical Reference Pt	Savanna 655 (RKB)	Savanna 655 (RKB) to Ground Level at Slot (Slot 515967)	16.00ft
MD Reference Pt	Savanna 655 (RKB)	Section Origin	N 0.00, E 0.00 ft
Field Vertical Reference	Mean Sea Level	Section Azimuth	348.65°



Where energy meets innovation.

Actual Wellpath Report

PUL-96 515967 AWP Proj: 12348'

Page 2 of 10



REFERENCE WELLPATH IDENTIFICATION			
Operator	EQT	Slot	Slot 515967
Area	Ritchie County, WV	Well	PUL-96 515967
Field	Ritchie	Wellbore	PUL-96 515967 AWB
Facility	PUL-96 Pad		

WELLPATH DATA (194 stations) † = interpolated/extrapolated station											
MD (ft)	Inclination (°)	Azimuth (°)	TVD (ft)	TVDS (ft)	Vert Sect (ft)	North (ft)	East (ft)	DLS (%/100ft)	Build Rate (%/100ft)	Turn Rate (%/100ft)	Comments
0.00†	0.000	128.850	0.00	-1199.00	0.00	0.00	0.00	0.00	0.00	0.00	0.00
16.00	0.000	128.850	16.00	-1183.00	0.00	0.00	0.00	0.00	0.00	0.00	0.00
103.00	0.340	128.850	103.00	-1096.00	-0.20	-0.16	0.20	0.39	0.39	148.10	
203.00	0.350	136.600	203.00	-996.00	-0.69	-0.57	0.64	0.05	0.01	7.75	
303.00	0.300	139.620	303.00	-896.00	-1.17	-0.99	1.02	0.05	-0.05	3.02	
403.00	0.280	144.370	402.99	-796.01	-1.62	-1.39	1.33	0.03	-0.02	4.75	
503.00	0.260	161.180	502.99	-696.01	-2.07	-1.80	1.55	0.08	-0.02	16.81	
603.00	0.400	219.120	602.99	-596.01	-2.52	-2.29	1.40	0.34	0.14	57.94	
703.00	0.830	253.060	702.99	-496.01	-2.81	-2.77	0.49	0.55	0.43	33.94	
803.00	0.850	254.240	802.98	-396.02	-2.94	-3.18	-0.92	0.03	0.02	1.18	
903.00	0.830	263.740	902.97	-296.03	-2.93	-3.46	-2.35	0.14	-0.02	9.50	
1003.00	0.770	265.870	1002.96	-196.04	-2.78	-3.59	-3.74	0.07	-0.06	2.13	
1103.00	0.670	274.920	1102.95	-96.05	-2.54	-3.59	-4.99	0.15	-0.10	9.05	
1203.00	0.620	278.390	1202.94	3.94	-2.19	-3.46	-6.11	0.06	-0.05	3.47	
1303.00	0.470	274.010	1302.94	103.94	-1.90	-3.35	-7.06	0.16	-0.15	-4.38	
1403.00	0.330	264.370	1402.93	203.93	-1.76	-3.35	-7.75	0.15	-0.14	-9.64	
1503.00	0.260	261.590	1502.93	303.93	-1.72	-3.41	-8.26	0.07	-0.07	-2.78	
1603.00	0.260	213.450	1602.93	403.93	-1.87	-3.64	-8.61	0.21	0.00	-48.14	
1703.00	0.440	195.090	1702.93	503.93	-2.37	-4.20	-8.84	0.21	0.18	-18.36	
1803.00	0.820	211.310	1802.92	603.92	-3.24	-5.18	-9.31	0.42	0.38	16.22	
1903.00	0.880	214.350	1902.91	703.91	-4.31	-6.42	-10.12	0.08	0.06	3.04	
2003.00	0.870	216.150	2002.90	803.90	-5.36	-7.67	-11.00	0.03	-0.01	1.80	
2103.00	0.770	228.500	2102.89	903.89	-6.21	-8.73	-11.95	0.20	-0.10	12.35	
2203.00	0.720	234.800	2202.88	1003.88	-6.80	-9.54	-12.96	0.10	-0.05	6.30	
2303.00	0.700	234.090	2302.87	1103.87	-7.31	-10.26	-13.97	0.02	-0.02	-0.71	
2403.00	0.580	245.730	2402.87	1203.87	-7.67	-10.82	-14.93	0.18	-0.12	11.64	
2503.00	0.540	249.670	2502.86	1303.86	-7.86	-11.19	-15.83	0.06	-0.04	3.94	
2603.00	0.540	255.540	2602.86	1403.86	-7.96	-11.48	-16.73	0.06	0.00	5.87	
2703.00	0.360	251.880	2702.86	1503.86	-8.02	-11.69	-17.48	0.18	-0.18	-3.66	
2803.00	0.260	233.530	2802.85	1603.85	-8.15	-11.92	-17.97	0.14	-0.10	-18.35	

RECEIVED
Office of Oil and Gas
DEC 20 2017
WV Department of
Environmental Protection

02/16/2018



Where energy meets innovation.

Actual Wellpath Report

PUL-96 515967 AWP Proj: 12348'

Page 3 of 10



REFERENCE WELLPATH IDENTIFICATION			
Operator	EQT	Slot	Slot 515967
Area	Ritchie County, WV	Well	PUL-96 515967
Field	Ritchie	Wellbore	PUL-96 515967 AWB
Facility	PUL-96 Pad		

WELLPATH DATA (194 stations)											
MD (ft)	Inclination (°)	Azimuth (°)	TVD (ft)	TVSS (ft)	Vert Sect (ft)	North (ft)	East (ft)	DLS (°/100ft)	Build Rate (°/100ft)	Turn Rate (°/100ft)	Comments
2903.00	0.190	212.270	2902.85	1703.85	-8.37	-12.20	-18.24	0.11	-0.07	-21.26	
3003.00	0.200	205.910	3002.85	1803.85	-8.63	-12.50	-18.40	0.02	0.01	-6.36	
3103.00	0.150	182.320	3102.85	1903.85	-8.90	-12.78	-18.48	0.09	-0.05	-23.59	
3203.00	0.140	162.280	3202.85	2003.85	-9.14	-13.03	-18.45	0.05	-0.01	-20.04	
3303.00	0.220	159.290	3302.85	2103.85	-9.46	-13.33	-18.35	0.08	0.08	-2.99	
3403.00	0.210	156.900	3402.85	2203.85	-9.82	-13.67	-18.21	0.01	-0.01	-2.39	
3503.00	0.250	144.450	3502.85	2303.85	-10.20	-14.02	-18.01	0.06	0.04	-12.45	
3603.00	0.280	147.130	3602.85	2403.85	-10.63	-14.40	-17.75	0.03	0.03	2.68	
3703.00	0.350	144.000	3702.85	2503.85	-11.13	-14.86	-17.44	0.07	0.07	-3.13	
3803.00	0.270	148.630	3802.85	2603.85	-11.63	-15.30	-17.13	0.08	-0.08	4.63	
3903.00	0.230	142.990	3902.85	2703.85	-12.04	-15.67	-16.89	0.05	-0.04	-5.64	
4003.00	0.260	155.050	4002.84	2803.84	-12.44	-16.03	-16.67	0.06	0.03	12.06	
4103.00	0.150	139.170	4102.84	2903.84	-12.77	-16.34	-16.49	0.12	-0.11	-15.88	
4203.00	0.150	134.350	4202.84	3003.84	-12.99	-16.53	-16.31	0.01	0.00	-4.82	
4303.00	0.200	130.880	4302.84	3103.84	-13.24	-16.73	-16.09	0.05	0.05	-3.47	
4403.00	0.280	170.000	4402.84	3203.84	-13.62	-17.09	-15.91	0.18	0.08	39.12	
4503.00	0.270	189.120	4502.84	3303.84	-14.09	-17.56	-15.91	0.09	-0.01	19.12	
4603.00	0.320	225.100	4602.84	3403.84	-14.46	-17.99	-16.14	0.19	0.05	35.98	
4703.00	0.350	248.350	4702.84	3503.84	-14.67	-18.30	-16.63	0.14	0.03	23.25	
4803.00	0.550	279.350	4802.84	3603.84	-14.56	-18.34	-17.38	0.31	0.20	31.00	
4903.00	0.650	292.660	4902.83	3703.83	-14.07	-18.04	-18.38	0.17	0.10	13.31	
5003.00	0.710	291.460	5002.82	3803.82	-13.42	-17.59	-19.48	0.06	0.06	-1.20	
5103.00	0.970	286.120	5102.81	3903.81	-12.69	-17.13	-20.87	0.27	0.26	-5.34	
5203.00	1.370	291.150	5202.79	4003.79	-11.66	-16.47	-22.80	0.41	0.40	5.03	
5228.00	1.460	291.980	5227.78	4028.78	-11.32	-16.24	-23.37	0.37	0.36	3.32	Gyro Tie In=5228' MD
5246.00	1.330	287.870	5245.78	4046.78	-11.09	-16.09	-23.78	0.91	-0.72	-22.83	
5277.00	0.390	200.250	5276.78	4077.78	-11.01	-16.08	-24.16	4.42	-3.03	-282.65	KOP 1=5277' MD
5309.00	4.120	137.200	5308.75	4109.75	-12.08	-17.02	-23.42	12.37	11.66	-197.03	
5341.00	8.500	134.540	5340.54	4141.54	-15.02	-19.53	-20.95	13.71	13.69	-8.31	
5372.00	11.990	136.420	5371.05	4172.05	-19.64	-23.47	-17.10	11.31	11.26	6.06	

RECEIVED
Office of Oil and Gas
DEC 20 2017
WV Department of
Environmental Protection

02/16/2018



Where energy meets innovation.

Actual Wellpath Report

PUL-96 515967 AWP Proj: 12348'

Page 4 of 10



REFERENCE WELLPATH IDENTIFICATION			
Operator	EQT	Slot	Slot 515967
Area	Ritchie County, WV	Well	PUL-96 515967
Field	Ritchie	Wellbore	PUL-96 515967 AWB
Facility	PUL-96 Pad		

WELLPATH DATA (194 stations)											
MD (ft)	Inclination (°)	Azimuth (°)	TVD (ft)	TVSS (ft)	Vert Sect (ft)	North (ft)	East (ft)	DLS (°/100ft)	Build Rate (°/100ft)	Turn Rate (°/100ft)	Comments
5404.00	14.700	138.040	5402.18	4203.18	-25.95	-28.90	-12.09	8.55	8.47	5.06	
5436.00	15.390	138.820	5433.08	4234.08	-33.13	-35.11	-6.58	2.25	2.16	2.44	
5467.00	15.470	137.770	5462.96	4263.96	-40.25	-41.27	-1.09	0.94	0.26	-3.39	
5499.00	15.420	135.620	5493.81	4294.81	-47.48	-47.47	4.75	1.80	-0.16	-6.72	
5531.00	15.430	132.870	5524.66	4325.66	-54.50	-53.41	10.85	2.29	0.03	-8.59	
5562.00	15.490	130.610	5554.54	4355.54	-61.10	-58.91	17.01	1.95	0.19	-7.29	
5594.00	15.400	128.990	5585.38	4386.38	-67.74	-64.36	23.56	1.38	-0.28	-5.06	
5625.00	15.440	127.590	5615.26	4416.26	-74.02	-69.47	30.03	1.21	0.13	-4.52	
5657.00	15.490	126.930	5646.11	4447.11	-80.42	-74.63	36.82	0.57	0.16	-2.06	
5688.00	15.400	126.010	5675.99	4476.99	-86.54	-79.54	43.46	0.84	-0.29	-2.97	
5720.00	14.940	123.110	5706.87	4507.87	-92.55	-84.29	50.35	2.77	-1.44	-9.06	KOP 2=5720' MD
5751.00	11.790	108.530	5737.04	4538.04	-96.93	-87.48	56.70	14.81	-10.16	-47.03	
5783.00	9.470	87.330	5768.50	4569.50	-98.96	-88.40	62.44	14.09	-7.25	-66.25	
5814.00	9.210	64.080	5799.10	4600.10	-98.72	-87.20	67.22	12.12	-0.84	-75.00	
5846.00	9.930	47.690	5830.66	4631.66	-96.65	-84.22	71.56	8.77	2.25	-51.22	
5878.00	10.770	39.840	5862.14	4663.14	-93.36	-80.07	75.52	5.12	2.63	-24.53	
5909.00	11.450	35.430	5892.56	4693.56	-89.44	-75.33	79.16	3.51	2.19	-14.23	
5941.00	12.360	32.340	5923.87	4724.87	-84.79	-69.85	82.83	3.47	2.84	-9.66	
5974.00	13.930	30.830	5956.00	4757.00	-79.29	-63.46	86.76	4.87	4.76	-4.58	
6004.00	16.120	29.530	5984.98	4785.98	-73.46	-56.73	90.66	7.39	7.30	-4.33	
6035.00	18.540	27.040	6014.57	4815.57	-66.35	-48.60	95.02	8.16	7.81	-8.03	
6067.00	21.450	22.610	6044.64	4845.64	-57.50	-38.66	99.59	10.25	9.09	-13.84	
6098.00	24.590	17.840	6073.17	4874.17	-47.17	-27.28	103.74	11.77	10.13	-15.39	
6129.00	27.770	12.980	6100.99	4901.99	-34.95	-14.10	107.34	12.36	10.26	-15.68	
6161.00	31.270	8.530	6128.83	4929.83	-20.34	1.38	110.25	12.90	10.94	-13.91	
6193.00	34.720	6.950	6155.67	4956.67	-3.87	18.65	112.58	11.11	10.78	-4.94	
6224.00	38.640	6.290	6180.52	4981.52	13.74	37.04	114.71	12.71	12.65	-2.13	
6255.00	42.570	5.610	6204.06	5005.06	33.00	57.10	116.80	12.76	12.68	-2.19	
6287.00	46.830	4.330	6226.80	5027.80	54.60	79.52	118.74	13.61	13.31	-4.00	
6318.00	50.970	2.280	6247.17	5048.17	77.19	102.84	120.07	14.25	13.35	-6.61	

RECEIVED
 Office of Oil and Gas
 DEC 20 2017
 W.V. Department of
 Environmental Protection

02/16/2018



Actual Wellpath Report

PUL-96 515967 AWP Proj: 12348



Operator	Area	Field	Facility
EQT	Richie County, WV	Richie	PUL-96 Pad
Slot 515967	Well	Wellbore	PUL-96 515967 AWB

REFERENCE WELLPATH IDENTIFICATION

MD	Inclination	Azimuth	TVD	TVSS	Vent Sect	North	East	DLS	Build Rate	Turn Rate	Comments
6350.00	54.780	359.380	6266.48	5067.48	102.13	128.34	120.43	13.93	11.91	-9.06	
6381.00	58.370	356.830	6283.56	5084.56	127.64	154.19	119.56	13.46	11.56	-8.23	
6413.00	61.590	355.170	6299.57	5100.57	155.12	181.82	117.62	11.02	10.06	-5.19	
6445.00	64.280	354.270	6314.13	5115.13	183.45	210.19	115.00	8.77	8.41	-2.81	
6476.00	66.610	353.750	6327.01	5128.01	211.52	238.23	112.05	7.67	7.52	-1.68	
6508.00	69.100	353.510	6339.07	5140.07	241.05	267.69	108.76	7.81	7.78	-0.75	
6539.00	72.240	353.220	6349.33	5150.33	270.20	296.74	105.38	10.17	10.13	-0.94	
6571.00	75.700	353.080	6358.17	5159.17	300.85	327.27	101.72	10.82	10.81	-0.44	
6602.00	78.480	352.930	6365.09	5166.09	330.98	357.26	98.04	8.98	8.97	-0.48	
6634.00	81.130	352.890	6370.75	5171.75	362.39	388.51	94.15	8.28	8.28	-0.13	
6666.00	83.660	352.910	6374.98	5175.98	394.01	419.99	90.23	7.97	7.97	0.06	
6697.00	85.630	352.640	6377.87	5178.87	424.80	450.60	86.35	6.35	6.29	-0.87	
6729.00	87.720	352.640	6379.73	5180.73	456.67	482.29	82.25	6.53	6.53	0.00	
6760.00	89.750	352.120	6380.41	5181.41	487.59	513.00	78.14	6.76	6.55	-1.68	P=6760 MD / 6380.41 TVD
6792.00	89.260	350.960	6380.89	5181.89	519.55	544.65	73.44	3.94	-1.53	-3.63	
6855.00	89.260	348.270	6381.50	5182.50	582.53	606.61	62.08	4.27	0.00	-4.27	
6918.00	89.380	346.800	6382.25	5183.25	645.51	668.12	48.49	2.34	0.19	-2.33	
6981.00	89.420	344.630	6382.91	5183.91	708.42	729.16	32.94	3.44	0.06	-3.44	
7044.00	89.480	347.010	6383.51	5184.51	771.34	790.24	17.51	3.78	0.10	3.78	
7107.00	89.630	347.650	6384.00	5185.00	834.32	851.70	3.69	1.04	0.24	1.02	
7170.00	89.660	345.240	6384.39	5185.39	897.26	912.94	-11.07	3.83	0.05	-3.83	
7233.00	89.480	345.480	6384.87	5185.87	960.16	973.89	-26.99	0.48	-0.29	0.38	
7296.00	89.480	347.490	6385.44	5186.44	1023.11	1035.14	-41.71	3.19	0.00	3.19	
7360.00	89.600	348.140	6385.95	5186.95	1087.10	1097.70	-55.22	1.03	0.19	1.02	
7422.00	89.450	349.230	6386.47	5187.47	1149.10	1158.49	-67.39	1.77	-0.24	1.76	
7486.00	89.570	350.550	6387.01	5188.01	1213.08	1221.49	-78.62	2.07	0.19	2.06	
7549.00	89.510	351.180	6387.52	5188.52	1276.03	1283.69	-88.62	1.00	-0.10	1.00	
7612.00	89.510	350.820	6388.06	5189.06	1338.97	1345.91	-98.48	0.57	0.00	-0.57	
7676.00	89.570	352.630	6388.57	5189.57	1402.88	1409.24	-107.69	2.83	0.09	2.83	
7739.00	89.600	354.670	6389.03	5190.03	1465.63	1471.85	-114.65	3.24	0.05	3.24	

RECEIVED
Office of Oil and Gas
DEC 20 2017
WV Department of
Environmental Protection



18/01/2018

Actual Wellpath Report
 PUL-96 515967 AWP Proj: 12348
 Page 6 of 10



REFERENCE WELLPATH IDENTIFICATION			
Operator	EQT	Slot	Slot 515967
Area	Richie County, WV	Well	PUL-96 515967
Field	Richie	Wellbore	PUL-96 515967 AWB
Facility	PUL-96 Pad		

WELLPATH DATA (194 stations)												
MD	Inclination	Azimuth	TVD	TVDS	Vent Sect	North	East	DLS	Build Rate	Turn Rate	Comments	
(m)	[°]	[°]	(m)	(m)	(m)	(m)	(m)	[/(100m)]	[/100m]	[/100m]		
7803.00	89.720	355.770	6389.41	5190.41	1529.21	1535.63	-119.99	1.73	0.19	1.72		
7865.00	90.220	354.950	6389.44	5190.44	1590.78	1597.42	-125.00	1.55	0.81	-1.32		
7928.00	90.280	349.940	6389.17	5190.17	1653.62	1659.85	-133.28	7.95	0.10	-7.95		
7992.00	89.750	346.280	6389.15	5190.15	1717.61	1722.47	-146.47	5.78	-0.83	-5.72		
8055.00	89.750	346.690	6389.42	5190.42	1760.56	1783.73	-161.19	0.65	0.00	0.55		
8118.00	89.750	348.720	6389.70	5190.70	1843.55	1845.28	-174.60	3.22	0.00	3.22		
8180.00	89.720	347.900	6389.98	5190.98	1905.55	1905.99	-187.17	1.32	-0.05	-1.32		
8243.00	89.820	346.970	6390.24	5191.24	1968.53	1967.48	-200.87	1.48	0.16	-1.48		
8307.00	89.780	348.390	6390.46	5191.46	2032.52	2030.00	-214.53	2.22	-0.06	2.22		
8370.00	89.820	350.770	6390.68	5191.68	2095.51	2091.96	-225.92	3.78	0.06	3.78		
8433.00	89.850	351.280	6390.86	5191.86	2158.46	2154.19	-235.75	0.81	0.05	0.81		
8497.00	89.820	352.310	6391.05	5192.05	2222.36	2217.53	-244.88	1.61	-0.05	1.61		
8560.00	89.650	355.730	6391.23	5192.23	2285.07	2280.18	-251.45	5.43	0.05	5.43		
8623.00	89.630	357.150	6391.51	5192.51	2347.49	2343.06	-255.36	2.28	-0.35	2.25		
8684.00	89.540	355.940	6391.96	5192.96	2407.91	2403.94	-269.03	1.99	-0.15	-1.98		
8747.00	89.540	353.380	6392.46	5193.46	2470.55	2466.66	-264.89	4.05	0.00	-4.05		
8811.00	89.630	351.550	6392.93	5193.93	2534.41	2530.11	-273.28	2.88	0.14	-2.87		
8874.00	89.690	350.310	6393.30	5194.30	2597.35	2592.32	-283.21	1.97	0.10	-1.97		
8937.00	89.570	350.130	6393.71	5194.71	2660.33	2654.40	-293.91	0.34	-0.19	-0.29		
9000.00	89.630	349.660	6394.15	5195.15	2723.31	2716.42	-304.95	0.75	0.10	-0.75		
9063.00	89.600	349.330	6394.57	5195.57	2786.30	2778.36	-316.45	0.53	-0.05	-0.52		
9126.00	89.630	348.060	6394.99	5195.99	2849.30	2840.14	-328.80	2.02	0.05	-2.02		
9189.00	89.690	346.450	6395.37	5196.37	2912.28	2901.58	-342.69	2.56	0.10	-2.56		
9252.00	89.260	345.200	6395.94	5196.94	2975.20	2962.66	-358.12	2.10	-0.68	-1.98		
9315.00	89.450	343.870	6396.65	5197.65	3038.03	3023.37	-374.92	2.13	0.30	-2.11		
9378.00	89.450	343.370	6397.26	5198.26	3100.79	3083.81	-392.68	0.79	0.00	-0.79		
9441.00	89.350	343.730	6397.92	5198.92	3163.53	3144.23	-410.52	0.59	-0.16	0.57		
9505.00	89.570	344.100	6398.52	5199.52	3227.31	3205.72	-428.26	0.67	0.34	0.58		
9568.00	89.380	342.800	6399.10	5200.10	3290.05	3266.11	-446.20	2.09	-0.30	-2.06		
9631.00	89.450	341.430	6399.74	5200.74	3352.63	3328.06	-465.55	2.18	0.11	-2.17		

RECEIVED
 Office of Oil and Gas
 DEC 20 2017
 WV Department of
 Environmental Protection



Where energy meets innovation.

Actual Wellpath Report

PUL-96 515967 AWP Proj: 12348'

Page 7 of 10



REFERENCE WELLPATH IDENTIFICATION			
Operator	EQT	Slot	Slot 515967
Area	Ritchie County, WV	Well	PUL-96 515967
Field	Ritchie	Wellbore	PUL-96 515967 AWB
Facility	PUL-96 Pad		

WELLPATH DATA (194 stations)												
MD [ft]	Inclination [°]	Azimuth [°]	TVD [ft]	TVDSS [ft]	Vert Sect [ft]	North [ft]	East [ft]	DLS ["/100ft]	Build Rate ["/100ft]	Turn Rate ["/100ft]	Comments	
9694.00	89.570	341.130	6400.28	5201.28	3415.11	3385.73	-485.76	0.51	0.19	-0.48		
9758.00	89.600	341.710	6400.74	5201.74	3478.60	3446.39	-506.16	0.91	0.05	0.91		
9821.00	89.600	342.600	6401.18	5202.18	3541.19	3506.35	-525.46	1.41	0.00	1.41		
9884.00	89.570	343.320	6401.64	5202.64	3603.88	3566.59	-543.92	1.14	-0.05	1.14		
9947.00	89.660	344.000	6402.06	5203.06	3666.64	3627.04	-561.65	1.09	0.14	1.08		
10010.00	89.660	343.550	6402.44	5203.44	3729.41	3687.53	-579.25	0.71	0.00	-0.71		
10073.00	89.630	342.550	6402.83	5203.83	3792.11	3747.79	-597.61	1.59	-0.05	-1.59		
10137.00	89.510	342.920	6403.31	5204.31	3855.77	3808.91	-616.61	0.61	-0.19	0.58		
10200.00	89.600	343.800	6403.80	5204.80	3918.50	3869.27	-634.65	1.40	0.14	1.40		
10263.00	89.630	344.860	6404.22	5205.22	3981.31	3929.92	-651.66	1.68	0.05	1.68		
10326.00	89.510	345.840	6404.69	5205.69	4044.21	3990.87	-667.60	1.57	-0.19	1.56		
10390.00	89.540	346.390	6405.22	5206.22	4108.14	4053.00	-682.95	0.86	0.05	0.86		
10453.00	89.570	346.790	6405.71	5206.71	4171.10	4114.28	-697.57	0.64	0.05	0.63		
10516.00	89.540	346.670	6406.20	5207.20	4234.06	4175.59	-712.03	0.20	-0.05	-0.19		
10579.00	89.540	346.150	6406.71	5207.71	4297.01	4236.83	-726.83	0.83	0.00	-0.83		
10642.00	89.570	344.970	6407.20	5208.20	4359.92	4297.84	-742.54	1.87	0.05	-1.87		
10706.00	89.480	343.520	6407.73	5208.73	4423.72	4359.43	-759.91	2.27	-0.14	-2.27		
10769.00	89.450	342.640	6408.32	5209.32	4486.42	4419.70	-778.25	1.40	-0.05	-1.40		
10832.00	89.450	342.610	6408.92	5209.92	4549.07	4479.82	-797.06	0.05	0.00	-0.05		
10895.00	89.450	342.110	6409.53	5210.53	4611.69	4539.85	-816.15	0.79	0.00	-0.79		
10958.00	89.720	342.670	6409.98	5210.98	4674.31	4599.90	-835.21	0.99	0.43	0.89		
11021.00	89.540	346.900	6410.39	5211.39	4737.15	4660.68	-851.74	6.72	-0.29	6.71		
11084.00	89.230	349.550	6411.07	5212.07	4800.14	4722.34	-864.59	4.23	-0.49	4.21		
11147.00	89.140	348.000	6411.96	5212.96	4863.13	4784.13	-876.86	2.46	-0.14	-2.46		
11210.00	89.260	344.200	6412.84	5213.84	4926.05	4845.27	-891.99	6.03	0.19	-6.03		
11273.00	89.110	343.080	6413.74	5214.74	4988.81	4905.71	-909.73	1.79	-0.24	-1.78		
11336.00	89.080	344.020	6414.73	5215.73	5051.55	4966.12	-927.57	1.49	-0.05	1.49		
11400.00	89.110	344.650	6415.74	5216.74	5115.36	5027.74	-944.85	0.99	0.05	0.98		
11461.00	89.380	344.950	6416.55	5217.55	5176.22	5086.60	-960.84	0.66	0.44	0.49		
11524.00	89.600	347.100	6417.11	5218.11	5239.14	5147.73	-976.05	3.43	0.35	3.41		

RECEIVED
Office of Oil and Gas
DEC 20 2017
WV Department of
Environmental Protection

02/16/2018



Where energy meets innovation.

Actual Wellpath Report

PUL-96 515967 AWP Proj: 12348'

Page 8 of 10



REFERENCE WELLPATH IDENTIFICATION			
Operator	EQT	Slot	Slot 515967
Area	Ritchie County, WV	Well	PUL-96 515967
Field	Ritchie	Wellbore	PUL-96 515967 AWB
Facility	PUL-96 Pad		

WELLPATH DATA (194 stations)												
MD	Inclination	Azimuth	TVD	TVDSS	Vert Sect	North	East	DLS	Build	Turn	Comments	
[ft]	[°]	[°]	[ft]	[ft]	[ft]	[ft]	[ft]	[°/100ft]	Rate	Rate		
									[°/100ft]	[°/100ft]		
11587.00	89.350	349.530	6417.69	5218.69	5302.13	5209.41	-988.81	3.88	-0.40	3.86		
11651.00	89.510	348.170	6418.32	5219.32	5366.13	5272.20	-1001.18	2.14	0.25	-2.12		
11714.00	89.510	346.870	6418.86	5219.86	5429.11	5333.71	-1014.80	2.06	0.00	-2.06		
11777.00	89.970	346.620	6419.15	5220.15	5492.08	5395.03	-1029.24	0.83	0.73	-0.40		
11840.00	90.460	346.160	6418.91	5219.91	5555.03	5456.26	-1044.07	1.07	0.78	-0.73		
11904.00	89.350	344.410	6419.02	5220.02	5618.91	5518.16	-1060.32	3.24	-1.73	-2.73		
11967.00	89.480	343.590	6419.66	5220.66	5681.70	5578.71	-1077.69	1.32	0.21	-1.30		
12030.00	89.380	341.780	6420.29	5221.29	5744.36	5638.85	-1096.44	2.88	-0.16	-2.87		
12093.00	89.350	340.810	6420.99	5221.99	5806.83	5698.52	-1116.64	1.54	-0.05	-1.54		
12157.00	89.570	341.990	6421.59	5222.59	5870.32	5759.17	-1137.05	1.88	0.34	1.84		
12220.00	89.570	343.640	6422.06	5223.06	5932.99	5819.36	-1155.66	2.62	0.00	2.62		
12284.00	89.540	346.190	6422.56	5223.56	5996.84	5881.15	-1172.32	3.98	-0.05	3.98		
12318.00	89.420	347.450	6422.87	5223.87	6030.82	5914.25	-1180.07	3.72	-0.35	3.71	Final Survey=12318' MD / 6422.87' TVD	
12348.00	89.420	347.450	6423.17	5224.17	6060.82	5943.53	-1186.59	0.00	0.00	0.00	Projection to TD=12348' MD / 6423.17' TVD, Deepest Point of Well=12348' MD / 6423.17' TVD	

HOLE & CASING SECTIONS - Ref Wellbore: PUL-96 515967 AWB Ref Wellpath: PUL-96 515967 AWP Proj: 12348'									
String/Diameter	Start MD	End MD	Interval	Start TVD	End TVD	Start N/S	Start E/W	End N/S	End E/W
	[ft]	[ft]	[ft]	[ft]	[ft]	[ft]	[ft]	[ft]	[ft]
26in Conductor	16.00	66.00	50.00	16.00	66.00	0.00	0.00	-0.05	0.07
17.5in Open Hole	66.00	655.00	589.00	66.00	654.99	-0.05	0.07	-2.55	1.05
13.375in Casing Surface	16.00	655.00	639.00	16.00	654.99	0.00	0.00	-2.55	1.05
12.25in Open Hole	655.00	2566.00	1911.00	654.99	2565.86	-2.55	1.05	-11.38	-16.39
9.625in Casing Intermediate	16.00	2566.00	2550.00	16.00	2565.86	0.00	0.00	-11.38	-16.39
8.75in Open Hole	2566.00	5250.00	2684.00	2565.86	5249.78	-11.38	-16.39	-16.06	-23.87
8.5in Open Hole	5250.00	12348.00	7098.00	5249.78	6423.17	-16.06	-23.87	5943.53	-1186.59
5.5in Casing Production	16.00	12348.00	12332.00	16.00	6423.17	0.00	0.00	5943.53	-1186.59

RECEIVED
Office of Oil and Gas
DEC 20 2017
WV Department of
Environmental Protection

02/16/2018



Where energy meets innovation.

Actual Wellpath Report

PUL-96 515967 AWP Proj: 12348'

Page 9 of 10



REFERENCE WELLPATH IDENTIFICATION			
Operator	EQT	Slot	Slot 515967
Area	Ritchie County, WV	Well	PUL-96 515967
Field	Ritchie	Wellbore	PUL-96 515967 AWB
Facility	PUL-96 Pad		

TARGETS								
Name	TVD [ft]	North [ft]	East [ft]	Grid East [US ft]	Grid North [US ft]	Latitude	Longitude	Shape
PUL-96 515967 BHL Rev-2	6392.00	5942.44	-1193.20	1577764.12	268467.08	39°13'38.940"N	80°59'25.912"W	point
PUL-96 515967 IP Rev-2	6392.00	2892.52	-358.33	1578598.96	265417.27	39°13'08.936"N	80°59'14.663"W	point
PUL-96 515967 LP Rev-2	6392.00	490.79	76.83	1579034.11	263015.62	39°12'45.272"N	80°59'08.630"W	point
PUL-96 Hardlines Rev-1	6500.00	2308.05	671.91	1579629.17	264832.82	39°13'03.329"N	80°59'01.452"W	polygon

WELLPATH COMPOSITION - Ref Wellbore: PUL-96 515967 AWB Ref Wellpath: PUL-96 515967 AWP Proj: 12348'					
Start MD [ft]	End MD [ft]	Positional Uncertainty Model	Log Name/Comment	Wellbore	
16.00	5228.00	Gyrodata standard - Drop gyro or Multi-shot	01 Gyrodata MS Gyro <8-3/4"> (103'-5228')	PUL-96 515967 AWB	
5228.00	12318.00	BHI AutoTrak Curve (Axial)	02 BHI AT Curve <8-1/2"> (5228')(5246'-12318')	PUL-96 515967 AWB	
12318.00	12348.00	Blind Drilling (std)	Projection to bit	PUL-96 515967 AWB	

RECEIVED
Office of Oil and Gas
DEC 20 2017
WV Department of
Environmental Protection

02/16/2018



Where energy meets innovation.

Actual Wellpath Report

PUL-96 515967 AWP Proj: 12348'

Page 10 of 10



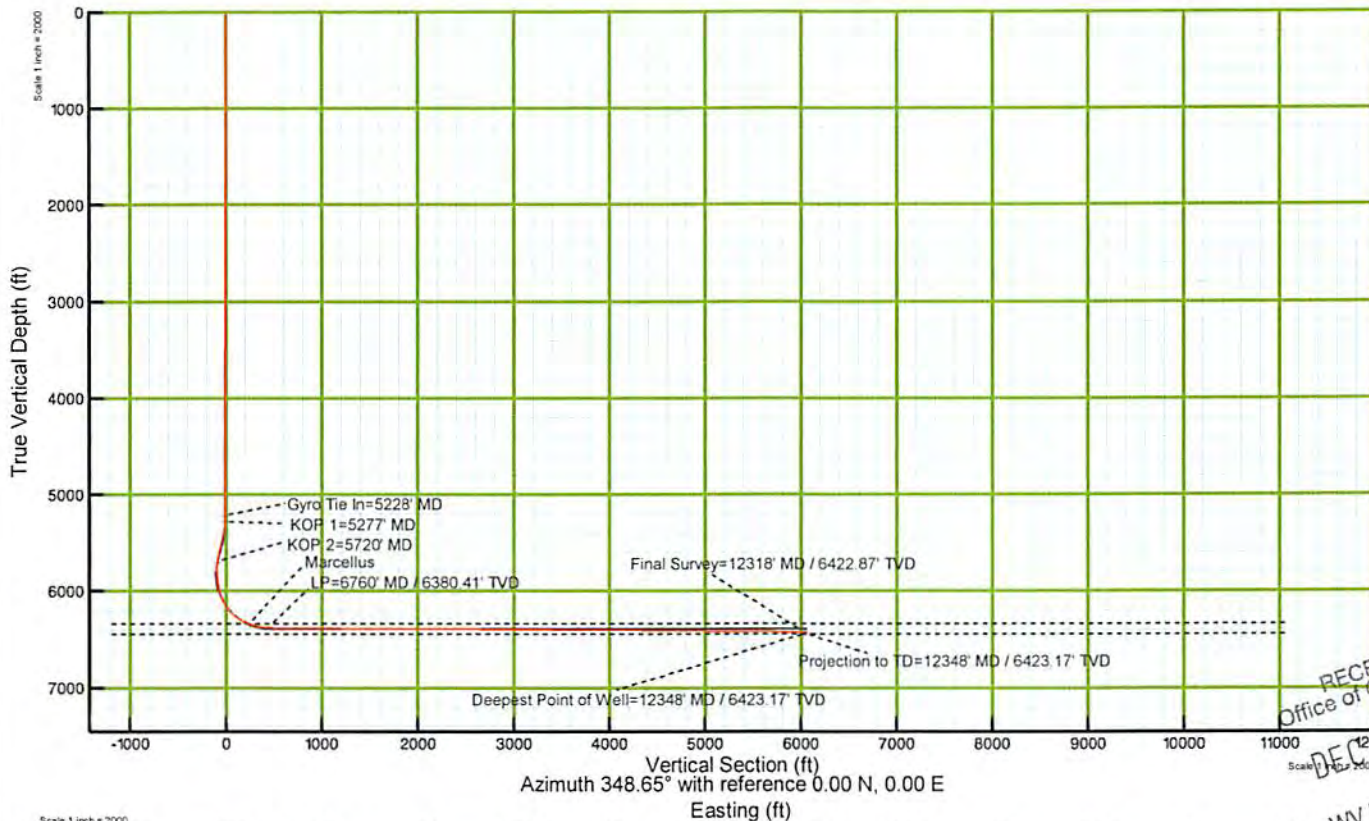
REFERENCE WELLPATH IDENTIFICATION			
Operator	EQT	Slot	Slot 515967
Area	Ritchie County, WV	Well	PUL-96 515967
Field	Ritchie	Wellbore	PUL-96 515967 AWB
Facility	PUL-96 Pad		

WELLPATH COMMENTS				
MD [ft]	Inclination [°]	Azimuth [°]	TVD [ft]	Comment
5228.00	1.460	291.980	5227.78	Gyro Tie In=5228' MD
5277.00	0.390	200.250	5276.78	KOP 1=5277' MD
5720.00	14.940	123.110	5706.87	KOP 2=5720' MD
6760.00	89.750	352.120	6380.41	LP=6760' MD / 6380.41' TVD
12318.00	89.420	347.450	6422.87	Final Survey=12318' MD / 6422.87' TVD
12348.00	89.420	347.450	6423.17	Projection to TD=12348' MD / 6423.17' TVD, Deepest Point of Well=12348' MD / 6423.17' TVD

RECEIVED
Office of Oil and Gas
DEC 20 2017
WV Department of
Environmental Protection

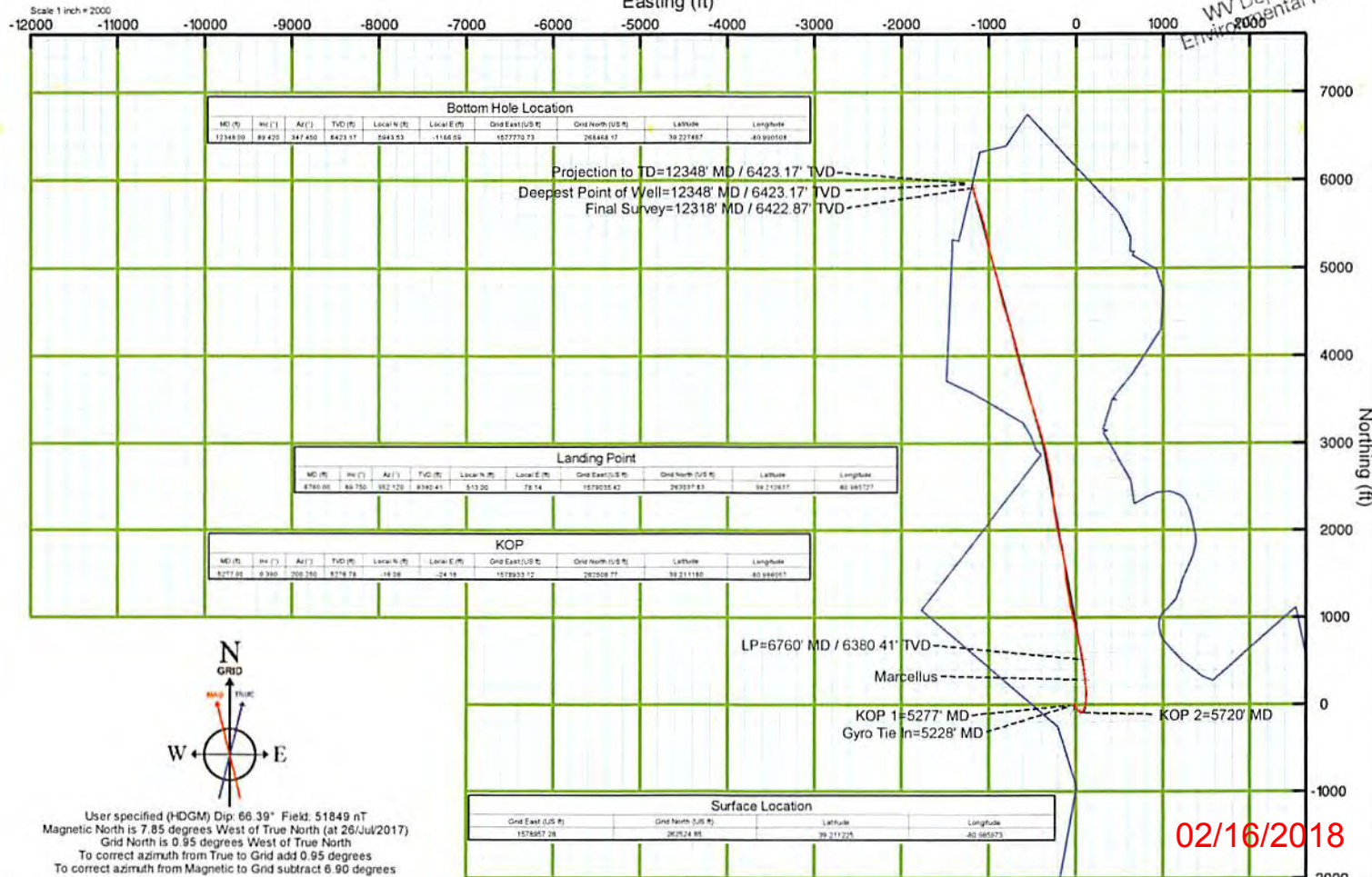
02/16/2018

KB Elevation=1199 FT
Ground Elevation=1183 FT
All measurements were taken from KB Elevation



RECEIVED
Office of Oil and Gas
DEC 20 2017

WV Department of
Environmental Protection



Bottom Hole Location									
MD (ft)	MD (%)	Azi (°)	TVD (ft)	Local N (ft)	Local E (ft)	Grid East (US ft)	Grid North (US ft)	Latitude	Longitude
12348.00	89.425	347.450	6423.17	5043.93	-1156.05	157775.73	26446.17	39.237487	80.990509

Projection to TD=12348' MD / 6423.17' TVD
Deepest Point of Well=12348' MD / 6423.17' TVD
Final Survey=12318' MD / 6422.87' TVD

Landing Point									
MD (ft)	MD (%)	Azi (°)	TVD (ft)	Local N (ft)	Local E (ft)	Grid East (US ft)	Grid North (US ft)	Latitude	Longitude
6760.00	88.790	352.120	6380.41	513.00	78.14	157603.63	26293.83	39.210817	80.985121

KOP									
MD (ft)	MD (%)	Azi (°)	TVD (ft)	Local N (ft)	Local E (ft)	Grid East (US ft)	Grid North (US ft)	Latitude	Longitude
5177.00	8.390	300.390	6116.19	-18.98	-24.19	1578933.12	26208.77	39.211160	80.986951



User specified (HDGM) Dip: 66.39° Field: 51849 nT
Magnetic North is 7.85 degrees West of True North (at 26/Jul/2017)
Grid North is 0.95 degrees West of True North
To correct azimuth from True to Grid add 0.95 degrees
To correct azimuth from Magnetic to Grid subtract 6.90 degrees

Surface Location			
Grid East (US ft)	Grid North (US ft)	Latitude	Longitude
1576957.28	262924.85	39.211325	80.985873

02/16/2018