



west virginia department of environmental protection

Office of Oil and Gas
601 57th Street, S.E.
Charleston, WV 25304
(304) 926-0450
fax: (304) 926-0452

Austin Caperton, Cabinet Secretary
www.dep.wv.gov

Wednesday, October 24, 2018
PERMIT MODIFICATION APPROVAL
Horizontal 6A / New Drill

ANTERO RESOURCES CORPORATION
1615 WYNKOOP STREET

DENVER, CO 80202

Re: Permit Modification Approval for HAYES UNIT 2H
47-085-10366-00-00

Modified Lateral Length 11281'

ANTERO RESOURCES CORPORATION

The Office of Oil and Gas has reviewed the attached permit modification for the above referenced permit. The attached modification has been approved and well work may begin. Please be reminded that the oil and gas inspector is to be notified twenty-four (24) hours before permitted well work is commenced.

If there are any questions, please feel free to contact me at (304) 926- 0450.

James A. Martin
Chief

A blue ink signature of James A. Martin, written in a cursive style, is placed over the printed name and title.

Operator's Well Number: HAYES UNIT 2H
Farm Name: DANIEL M. HAYMONG IV
U.S. WELL NUMBER: 47-085-10366-00-00
Horizontal 6A New Drill
Date Modification Issued: October 24, 2018

Promoting a healthy environment.

STATE OF WEST VIRGINIA
DEPARTMENT OF ENVIRONMENTAL PROTECTION, OFFICE OF OIL AND GAS
WELL WORK PERMIT APPLICATION

1) Well Operator: Antero Resources Corporation 494507062 085 - Ritchie Clay Pennsboro 7.5'
Operator ID County District Quadrangle

2) Operator's Well Number: Hayes Unit 2H Well Pad Name: Lettie Pad

3) Farm Name/Surface Owner: Daniel M. Haymond, IV, et al Public Road Access: Stull Hill Rd.

4) Elevation, current ground: 970' Elevation, proposed post-construction: _____

5) Well Type (a) Gas Oil _____ Underground Storage _____

Other _____

(b) If Gas Shallow Deep _____

Horizontal _____

6) Existing Pad: Yes or No Yes

7) Proposed Target Formation(s), Depth(s), Anticipated Thickness and Expected Pressure(s):
Marcellus Shale: 6800' TVD, Anticipated Thickness- 75 feet, Associated Pressure- 2800#

8) Proposed Total Vertical Depth: 6800' TVD

9) Formation at Total Vertical Depth: Marcellus

10) Proposed Total Measured Depth: 20500' MD

11) Proposed Horizontal Leg Length: 11281'

12) Approximate Fresh Water Strata Depths: 408'

13) Method to Determine Fresh Water Depths: Offset well records. Depths have been adjusted according to surface elevations.

14) Approximate Saltwater Depths: 1760'

15) Approximate Coal Seam Depths: 622'

16) Approximate Depth to Possible Void (coal mine, karst, other): None Anticipated

17) Does Proposed well location contain coal seams directly overlying or adjacent to an active mine? Yes _____ No

(a) If Yes, provide Mine Info: Name: _____
Depth: _____
Seam: _____
Owner: _____

RECEIVED
Office of Oil and Gas

JUL 23 2018

WV Department of
Environmental Protection

18)

CASING AND TUBING PROGRAM

TYPE	<u>Size (in)</u>	<u>New or Used</u>	<u>Grade</u>	<u>Weight per ft. (lb/ft)</u>	<u>FOOTAGE: For Drilling (ft)</u>	<u>INTERVALS: Left in Well (ft)</u>	<u>CEMENT: Fill-up (Cu. Ft.)/CTS</u>
Conductor	20"	New	H-40	94#	80'	80'	CTS, 77 Cu. Ft.
Fresh Water	13-3/8"	New	J-55	54.5#	460' *see #19	460' *see #19	CTS, 639 Cu. Ft.
Coal	9-5/8"	New	J-55	36#	2500'	2500'	CTS, 1018 Cu. Ft.
Intermediate							
Production	5-1/2"	New	P-110	23#	20500'	20500'	5229 Cu. Ft.
Tubing	2-3/8"	New	N-80	4.7#		7100'	
Liners							

TYPE	<u>Size (in)</u>	<u>Wellbore Diameter (in)</u>	<u>Wall Thickness (in)</u>	<u>Burst Pressure (psi)</u>	<u>Anticipated Max. Internal Pressure (psi)</u>	<u>Cement Type</u>	<u>Cement Yield (cu. ft./k)</u>
Conductor	20"	24"	0.438"	1530	50	Class A	~1.18
Fresh Water	13-3/8"	17-1/2"	0.38"/0.33"	2730	1000	Class A	~1.18
Coal	9-5/8"	12-1/4"	0.352"	3520	1500	Class A	~1.18
Intermediate							
Production	5-1/2"	8-3/4" & 8-1/2"	0.451"	14,530	2500	Lead-H/POZ & Tail - H	H/POZ~1.44 & H~1.8
Tubing	2-3/8"	4.778"	0.19"	11,200			
Liners							

PACKERS

Kind:	N/A			
Sizes:	N/A			
Depths Set:	N/A			

RECEIVED
Office of Oil and Gas

JUL 23 2018

19) Describe proposed well work, including the drilling and plugging back of any pilot hole:

Drill, perforate, fracture a new horizontal shallow well and complete Marcellus Shale.
*Antero will be air drilling the fresh water string which makes it difficult to determine when fresh water is encountered. Therefore, we have built in a buffer for the casing setting depth which helps to ensure that all fresh water zones are covered.

20) Describe fracturing/stimulating methods in detail, including anticipated max pressure and max rate:

Antero plans to pump Slickwater into the Marcellus Shale formation in order to ready the well for production. The fluid will be comprised of approximately 99 percent water and sand, with less than 1 percent special-purpose additives as shown in the attached "List of Anticipated Additives Used for Fracturing or Stimulating Well."

Anticipated Max Pressure - 9300 lbs
Anticipated Max Rate - 80 bpm

21) Total Area to be disturbed, including roads, stockpile area, pits, etc., (acres): 14.68 Acres

22) Area to be disturbed for well pad only, less access road (acres): 6.68 Acres

23) Describe centralizer placement for each casing string:

Conductor: no centralizers
Surface Casing: one centralizer 10' above the float shoe, one on the insert float collar and one every 4th joint spaced up the hole to surface.
Intermediate Casing: one centralizer above float joint, one centralizer 5' above float collar and one every 4th collar to surface.
Production Casing: one centralizer at shoe joint and one every 3 joints to top of cement in intermediate casing.

24) Describe all cement additives associated with each cement type:

Conductor: no additives, Class A cement.
Surface: Class A cement with 2-3% calcium chloride and 1/4 lb of flake
Intermediate: Class A cement with 1/4 lb of flake, 5 gallons of clay treat
Production: Lead cement- 50/50 Class H/Poz + 1.5% salt + 1% C-45 + 0.5% C-16a + 0.2% C-12 + 0.45% C-20 + 0.05% C-51
Production: Tail cement- Class H + 45 PPS Calcium Carbonate + 1.0% FL-160 + 0.2% ACGB-47 + 0.05% ACSA-51 + 0.2% ACR-20

25) Proposed borehole conditioning procedures:

Conductor: blowhole clean with air, run casing, 10 bbls fresh water.
Surface: blowhole clean with air, trip to conductor shoe, trip to bottom, blowhole clean with air, trip out, run casing, circulate pipe capacity + 40 bbls fresh water followed by 25 bbls bentonite mud, 10 bbls fresh water spacer.
Intermediate: blowhole clean with air, trip to surface casing shoe, trip to bottom, blowhole clean with air, trip out, run casing, circulate 40 bbls brine water followed by 10 bbls fresh water and 25 bbls bentonite mud, pump 10 bbls fresh water.
Production: circulate with 14 lb/gal NaCl mud, trip to middle of lateral, circulate, pump high viscosity sweep, trip to base of curve, pump high viscosity sweep, trip to top of curve, trip to bottom, circulate, pump high viscosity sweep, trip out, run casing, circulate 10 bbls fresh water, pump 48 bbls barite pill, pump 10 bbls fresh water followed by 48 bbls mud flush and 10 bbls water.

*Note: Attach additional sheets as needed.

RECEIVED
Office of Oil and Gas

JUL 23 2018

Page 3 of 3

INFORMATION SUPPLIED UNDER WEST VIRGINIA CODE
Chapter 22, Article 6A, Section 5(a)(5)
IN LIEU OF FILING LEASE(S) AND OTHER CONTINUING CONTRACT(S)

Under the oath required to make the verification on page 1 of this Notice and Application, I depose and say that I am the person who signed the Notice and Application for the Applicant, and that –

- (1) the tract of land is the same tract described in this Application, partly or wholly depicted in the accompanying plat, and described in the Construction and Reclamation Plan;
- (2) the parties and recordation data (if recorded) for lease(s) or other continuing contract(s) by which the Applicant claims the right to extract, produce or market the oil or gas are as follows:

Grantor, lessor, etc.	Grantee, lessee, etc.	Royalty	Book/Page
<u>Irene Nutter Haymond Trust Lease</u>			
Irene Nutter Haymond Trust	DC Petroleum, Inc.	1/8+	0257/0085
DC Petroleum, Inc.	Antero Resources Appalachian Corporation	Assignment	0257/0763
Antero Resources Appalachian Corporation	Antero Resources Corporation	Name Change	Exhibit 1
<u>Perkins Oil and Gas Co. Lease</u>			
Perkins Oil and Gas Co	Antero Resources Corporation	1/8+	0311/0923
RECEIVED Office of Oil and Gas JUL 23 2018			
<u>Wilson Hoskins et ux Lease</u>			
Wilson Hoskins et ux	Chase Petroleum Inc	1/8	0162/0267
Chase Petroleum Inc	KEPCO Inc	Assignment	0164/0198
KEPCO Inc	J. Makowski Associates Inc	Assignment	0176/0092
J. Makowski Associates Inc	J&J Enterprises	Assignment	0178/0666
J&J Enterprises	Eastern American Energy Corporation	Merger	0231/0732
Eastern American Energy Corporation	Energy Corporation of America	Merger	0306/0836
Energy Corporation of America	Antero Resources Appalachian Corporation	Assignment	0257/0377
Antero Resources Appalachian Corporation	Antero Resources Corporation	Name Change	Exhibit 1
<u>Charles Eugene Allman et ux Lease (4-29)</u>			
Charles Eugene Allman et ux	Antero Resources Corporation	1/8+	0282/0984
<u>Aretta P. Brelsford Lease</u>			
Aretta P. Brelsford	Harvey K. Haymond	1/8	0205/0397
Harvey K. Haymond	The Coastal Corporation	Assignment	0205/0547
The Coastal Corporation	Pardee Gas Company	Merge	0004/0801
Pardee Gas Company	Pardee Exploration Company	Assignment	0217/0610
Pardee Exploration Company	Pardee Resources Group, Inc	Merge	0005/0830
Pardee Resources Group, Inc	Pardee Minerals LLC	Merge	0006/0726
Pardee Minerals LLC	Antero Resources Appalachian Corporation	Assignment	0256/0314
Antero Resources Appalachian Corporation	Antero Resources Corporation	Name Change	Exhibit 1
<u>L.S. Taggart et al Lease</u>			
L.S. Taggart et al	Alton Skinner	1/8	0131/0508
Alton Skinner	Chase Petroleum Inc	Assignment	0142/0171
Chase Petroleum, Inc	Antero Resources Appalachian Corporation	Partial Assignment	0254/0133
Antero Resources Appalachian Corporation	Antero Resources Corporation	Name Change	Exhibit 1
<u>Charlene Cottrell Et Vir Lease</u>			
Charlene Cottrell Et Vir	Antero Resources Appalachian Corporation	1/8+	0259/0531
Antero Resources Appalachian Corporation	Antero Resources Corporation	Name Change	Exhibit 1

*Partial Assignments to Antero Resources Corporation include 100% rights to extract, produce and market the oil and gas from the Marcellus and any other formations completed with this well.

INFORMATION SUPPLIED UNDER WEST VIRGINIA CODE
Chapter 22, Article 6A, Section 5(a)(5)
IN LIEU OF FILING LEASE(S) AND OTHER CONTINUING CONTRACT(S)

Under the oath required to make the verification on page 1 of this Notice and Application, I depose and say that I am the person who signed the Notice and Application for the Applicant, and that –

- (1) the tract of land is the same tract described in this Application, partly or wholly depicted in the accompanying plat, and described in the Construction and Reclamation Plan;
- (2) the parties and recordation data (if recorded) for lease(s) or other continuing contract(s) by which the Applicant claims the right to extract, produce or market the oil or gas are as follows:

Grantor, lessor, etc.	Grantee, lessee, etc.	Royalty	Book/Page
<u>Charles Eugene Allman Et Ux Lease (9-7)</u>			
Charles Eugene Allman Et Ux	Antero Resources Appalachian Corporation	1/8+	0263/0575
Antero Resources Appalachian Corporation	Antero Resources Corporation	Name Change	Exhibit 1
RECEIVED Office of Oil and Gas JUL 23 2018 WV Department of Environmental Protection			
<u>Michael A. Toothman et ux Lease</u>			
Michael A Toothman et ux	KEPCO, Inc	1/8	0174/0068
KEPCO, Inc	Eastern Pennsylvania Exploration	Assignment	0181/0626
Eastern Pennsylvania Exploration Company	Eastern American Energy Corporation	Name Change	0218/0187
Eastern American Energy Corporation	Seneca-Upshur Petroleum Inc	Assignment	0243/0839
Seneca-Upshur Petroleum Inc	Seneca-Upshur Petroleum LLC	Name Change	0311/0863
Seneca-Upshur Petroleum LLC	Antero Resources Appalachian Corporation	Assignment	0258/0978
Antero Resources Appalachian Corporation	Antero Resources Corporation	Name Change	Exhibit 1
<u>Charles Eugene Allman Et Ux Lease (9-6)</u>			
Charles Eugene Allman Et Ux	Antero Resources Appalachian Corporation	1/8+	0263/0573
Antero Resources Appalachian Corporation	Antero Resources Corporation	Name Change	Exhibit 1
<u>Orlan Hadsell Rowe Et Al Lease</u>			
Orlan Hadsell Rowe Et Al	J&J Enterprises	1/8	0194/0373
J&J Enterprises	Equitable Resources Energy Company	Assignment	0208/0032
Equitable Resources Energy Company	Enervest East Limited Partnership	Assignment	0222/0273
Enervest East Limited Partnership	The Houston Exploration Company	Assignment	0234/0890
The Houston Exploration Company	Seneca-Upshur Petroleum Inc	Assignment	0236/0650
Seneca-Upshur Petroleum Inc	Seneca-Upshur Petroleum LLC	Name Change	0311/0863
Seneca-Upshur Petroleum LLC	Antero Resources Appalachian Corporation	Assignment	0258/0978
Antero Resources Appalachian Corporation	Antero Resources Corporation	Name Change	Exhibit 1
<u>Norman D. Fleming Et Ux Lease</u>			
Norman D. Fleming Et Ux	Antero Resources Corporation	1/8+	0278/0102
<u>Betty M. Tarulli et al Lease</u>			
Betty M. Tarulli et al	J&J Enterprises	1/8	0168/0629
J&J Enterprises	Eastern Pennsylvania Exploration Company	Assignment	0179/0609
Eastern Pennsylvania Exploration Company	Eastern American Energy Corporation	Assignment	0218/0187
Eastern American Energy Corporation	Energy Corporation of America	Assignment	0306/0836
Energy Corporation of America	Antero Resources Appalachian Corporation	Assignment	0257/0377
Antero Resources Appalachian Corporation	Antero Resources Corporation	Name Change	Exhibit 1

*Partial Assignments to Antero Resources Corporation include 100% rights to extract, produce and market the oil and gas from the Marcellus and any other formations completed with this well.

Operator's Well Number

Hayes Unit 2H

Permit Modification - API# 47-085-10366

INFORMATION SUPPLIED UNDER WEST VIRGINIA CODE
Chapter 22, Article 6A, Section 5(a)(5)
IN LIEU OF FILING LEASE(S) AND OTHER CONTINUING CONTRACT(S)

Under the oath required to make the verification on page 1 of this Notice and Application, I depose and say that I am the person who signed the Notice and Application for the Applicant, and that –

- (1) the tract of land is the same tract described in this Application, partly or wholly depicted in the accompanying plat, and described in the Construction and Reclamation Plan;
- (2) the parties and recordation data (if recorded) for lease(s) or other continuing contract(s) by which the Applicant claims the right to extract, produce or market the oil or gas are as follows:

Grantor, lessor, etc.	Grantee, lessee, etc.	Royalty	Book/Page
<u>Margaret A. Thomas Et Vir Lease</u>			
Margaret A. Thomas Et Vir	T.D. Armstrong	1/8	0030/0098
T.D. Armstrong	D.J. Sterling	Assignment	0033/0382
D.J. Sterling	The Philadelphia Company of West Virginia	Assignment	0033/0383
The Philadelphia Company of West Virginia	Pittsburg and West Virginia Gas Company	Assignment	0055/0362
Pittsburg and West Virginia Gas Company	Equitable Gas Company	Assignment	0126/0515
Equitable Gas Company	Carl. D. Perkins et ux	Assignment	0222/0433
Carl. D. Perkins et ux	Perkins Oil & Gas Company	Assignment	0264/0781
Perkins Oil & Gas company	Antero Resources Corporation	Assignment	0264/1045
<u>Anna E. Valentine Lease</u>			
Anna E. Valentine	Eastern American Energy Corporation	1/8	0204/0309
Eastern American Energy Corporation	Appalachian Energy Reserves Inc	Assignment	0207/0556
Appalachian Energy Reserves Inc	Appalachian Energy Development	Assignment	0229/0100
Appalachian Energy Development	Triad Energy Corporation of WV	Assignment	0229/0108
Triad Energy Corporation of WV	Triad Energy Corporation	Name Change	0007/0624
Triad Energy Corporation	Triad Hunter LLC	Assignment	0250/0196
Triad Hunter LLC	Antero Resources Corporation	Assignment	0270/0270

RECEIVED
Office of Oil and Gas

JUL 23 2018

WV Department of
Environmental Protection

*Partial Assignments to Antero Resources Corporation include 100% rights to extract, produce and market the oil and gas from the Marcellus and any other formations completed with this well.

WW-6A1
(5/13)

Operator's Well No. Hayes Unit 2H

**INFORMATION SUPPLIED UNDER WEST VIRGINIA CODE
Chapter 22, Article 6A, Section 5(a)(5)
IN LIEU OF FILING LEASE(S) AND OTHER CONTINUING CONTRACT(S)**

Under the oath required to make the verification on page 1 of this Notice and Application, I depose and say that I am the person who signed the Notice and Application for the Applicant, and that –

- (1) the tract of land is the same tract described in this Application, partly or wholly depicted in the accompanying plat, and described in the Construction and Reclamation Plan;
- (2) the parties and recordation data (if recorded) for lease(s) or other continuing contract(s) by which the Applicant claims the right to extract, produce or market the oil or gas are as follows:

Lease Name or Number	Grantor, Lessor, etc.	Grantee, Lessee, etc.	Royalty	Book/Page
<u>Mrs. Dorsey P. Chrislip Lease</u>	Mrs. Dorsey P. Chrislip Lease	Appalachian Energy Reserves, Inc	1/8	0210/0063
	Appalachian Energy Reserves, Inc	Appalachian Energy Development	Assignment	0229/0100
	Appalachian Energy Development	Triad Energy Corporation of WV	Assignment	0229/0108
	Triad Energy Corporation of WV	Triad Energy Corporation	Name Change	0007/0624
	Triad Energy Corporation	Triad Hunter LLC	Assignment	0250/0196
	Triad Hunter LLC	Antero Resources Corporation	Assignment	0270/0270


*Partial Assignments to Antero Resources Corporation include 100% rights to extract, produce and market the oil and gas from the Marcellus and any other formations completed with this well.

**Acknowledgement of Possible Permitting/Approval
In Addition to the Office of Oil and Gas**

The permit applicant for the proposed well work addressed in this application hereby acknowledges the possibility of the need for permits and/or approvals from local, state, or federal entities in addition to the DEP, Office of Oil and Gas, including but not limited to the following:

- WV Division of Water and Waste Management
- WV Division of Natural Resources WV Division of Highways
- U.S. Army Corps of Engineers
- U.S. Fish and Wildlife Service
- County Floodplain Coordinator

The applicant further acknowledges that any Office of Oil and Gas permit in no way overrides, replaces, or nullifies the need for other permits/approvals that may be necessary and further affirms that all needed permits/approvals should be acquired from the appropriate authority before the affected activity is initiated.

Well Operator: Antero Resources Corporation
 By: Kevin Kilstrom 
 Its: Senior VP of Production

RECEIVED
Office of Oil and Gas

JUL 23 2018

WV Department of
Environmental Protection

**FORM WW-6A1
EXHIBIT 1**

47 085 10366
MOD

FILED

JUN 10 2013

Natalie E. Tennant,
Secretary of State
1900 Kanawha Blvd E
Bldg 1, Suite 157-K
Charleston, WV 25305



Penney Barker, Manager
Corporations Division
Tel: (304)558-8000
Fax: (304)558-8381
Website: www.wvssos.com
E-mail: business@wvssos.com

**APPLICATION FOR
AMENDED CERTIFICATE
OF AUTHORITY**

Office Hours: Monday - Friday
8:30 a.m. - 5:00 p.m. ET

FILE ONE ORIGINAL
(Two if you want a filed
stamped copy returned to you)
FEE: \$25.00

**** In accordance with the provisions of the West Virginia Code, the undersigned corporation hereby ****
applies for an Amended Certificate of Authority and submits the following statement:

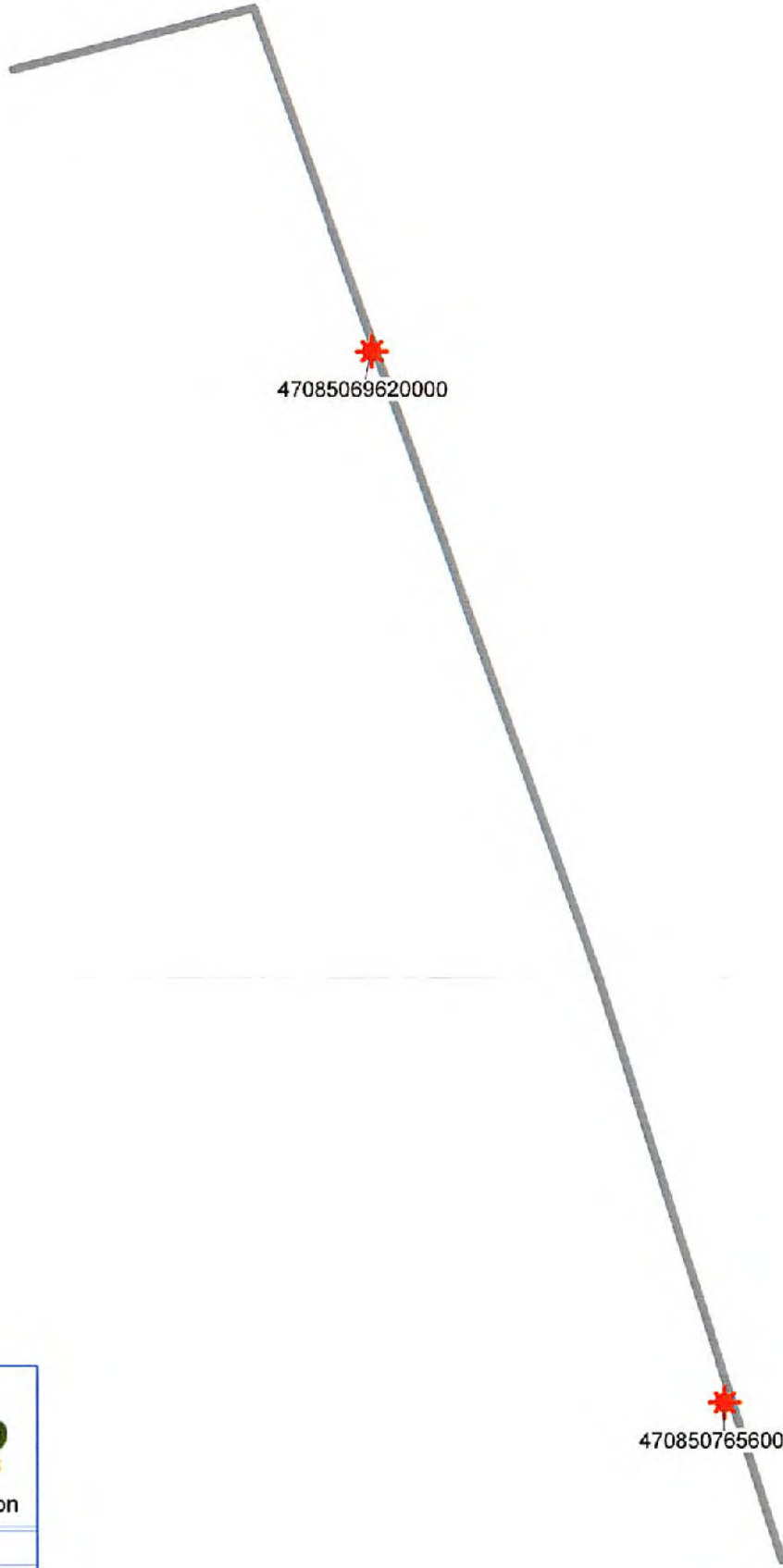
- Name under which the corporation was authorized to transact business in WV: Antero Resources Appalachian Corporation
- Date Certificate of Authority was issued in West Virginia: 6/25/2008
- Corporate name has been changed to: Antero Resources Corporation
(Attach one Certified Copy of Name Change as filed in home State of Incorporation.)
- Name the corporation elects to use in WV: Antero Resources Corporation
(due to home state name not being available)
- Other amendments: (attach additional pages if necessary)
- Name and phone number of contact person. (This is optional, however, if there is a problem with the filing, listing a contact person and phone number may avoid having to return or reject the document.)
Alvyn A. Schopp (303) 367-7310
Contact Name Phone Number
- Signature Information (See below **Important Legal Notice Regarding Signature**):
Print Name of Signer: Alvyn A. Schopp Title/Capacity: Authorized Person
Signature: [Handwritten Signature] Date: June 10, 2013

**Important Legal Notice Regarding Signature:* Per West Virginia Code §31D-1-129, Penalty for signing false document. Any person who signs a document he or she knows is false in any material respect and knows that the document is to be delivered to the secretary of state for filing is guilty of a misdemeanor and, upon conviction thereof, shall be fined not more than one thousand dollars or confined in the county or regional jail not more than one year, or both.

RECEIVED
Office of Oil and Gas

JUL 23 2018

WV Department of
Environmental Protection



47085069620000

47085076560000

47085080290000

RECEIVED
Office of Oil and Gas

JUL 23 2018

WV Department of
Environmental Protection



Antero Resources Corporation

Hayes Unit 2H - AOR



WELL SYMBOLS
Gas Well



UWI (API Num)	Well Name	Well Number	Operator	Hist Oper	TD	Perforated Interval MD (shallowest, deepest)	Perforated Formation(s)	Producible Formation(s) not perf'd
47085069620000	HOSKINS WILSON ETAL	WK-173	BRANTON O&G CORP	KEPCO INCORPORATED	5,988	4,593 - 5,874	Riley, Benson, Alexander	Warren, Gordon, Balltown
47085076560000	THOMAS MARGARET A	2	CONSOL GAS COMPANY	TREK INCORPORATED	5,439	4,605 - 5,294	Riley, Benson, Alexander	Warren, Gordon, Balltown
47085080290000	DOTSON CLIFFORD ETAL	2	TRIAD HUNTER LLC	APPALACHIAN ENGY DEV	5,351	4,512 - 5,218	Riley, Benson, Alexander	Warren, Gordon, Balltown

RECEIVED
Office of Oil and Gas

JUL 23 2018

WV Department of
Environmental Protection



10,016' TO TOP HOLE

LATITUDE 39°22'30"

Antero Resources Corporation Well No. Hayes Unit 2H

Table with columns: T/M-Par, Surface Owner, Book/Pg, Acreage. Lists various landowners and their acreage.

Table with columns: Royalty Owner, Name. Lists royalty owners and their names.

NOTES: WELL 2H TOP HOLE INFORMATION: N: 318,122ft E: 1,601,240ft... BOTTOM HOLE INFORMATION: N: 307,853ft E: 1,606,310ft...

(NAD) 83 (UTM) ZONE 17 COORDS: WELL 2H TOP HOLE INFORMATION: N: 4,357,277m E: 507,731m...



Table with columns: LINE, BEARING, DIST. Lists line bearings and distances for the well pad layout.



I, THE UNDERSIGNED, HEREBY CERTIFY THAT THIS PLAT IS CORRECT TO THE BEST OF MY KNOWLEDGE AND BELIEF AND SHOWS ALL THE INFORMATION REQUIRED BY LAW AND THE RULES ISSUED AND PERSCRIBED BY THE DEPARTMENT OF ENVIRONMENTAL PROTECTION.



STATE OF WEST VIRGINIA, DIVISION OF ENVIRONMENTAL PROTECTION, OFFICE OF OIL AND GAS. WILLOW LAND SURVEYING PLLC, 220 MASONIC AVE. PENNSBORO WEST VIRGINIA 26415

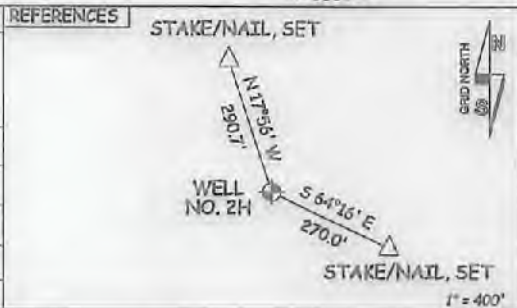
(NAD) 27 (UTM) ZONE 17 COORDS: WELL 2H TOP HOLE INFORMATION: N: 14,294,786ft E: 1,665,734ft... POINT OF ENTRY INFORMATION: N: 14,295,276ft E: 1,667,319ft...

NO OCCUPIED DWELLINGS OR BUILDINGS TWO THOUSAND FIVE HUNDRED (2,500) SQUARE FEET OR LARGER USED TO HOUSE OR SHELTER DAIRY CATTLE OR POULTRY HUSBANDRY ARE LOCATED WITHIN SIX HUNDRED TWENTY-FIVE (625) FEET OF THE CENTER OF THE WELL PAD.



JOB # 17-014WA, DRAWING # HAYES2HR, SCALE 1" = 2000', MINIMUM DEGREE OF ACCURACY SUBMETER, PROVEN SOURCE OF ELEV. SUBMETER MAPPING GRADE GPS, STATE OF WEST VIRGINIA DEPARTMENT OF ENERGY DIVISION OF OIL AND GAS

LEGEND: Surface Owner Boundary Lines +/-, Interior Surface Tracts +/-, Existing Fence, Found monument, as noted. THOMAS SUMMERS P.S. 2109, DATE 07/18/18, OPERATOR'S WELL # HAYES UNIT #2H



WELL TYPE: OIL GAS X LIQUID INJECTION WASTE DISPOSAL 47 085 10366 (IF "GAS") PRODUCTION X STORAGE DEEP SHALLOW X STATE COUNTY PERMIT LOCATION: ELEVATION 970' AS BUILT WATERSHED NORTH FORK HUGHES RIVER QUADRANGLE PENNSBORO 7.5' DISTRICT CLAY COUNTY RITCHIE SURFACE OWNER DANIEL M. HAYMOND IV ET AL ACREAGE 111.48 ACRES +/- OIL & GAS ROYALTY OWNER THE IRENE NUTTER HAYMOND TRUST; PERKINS OIL & GAS; WILSON HOSKINS ET UX; ARETTA P. LEASE ACREAGE 375 AC±; 84.0 AC±; 120 AC±; 60 AC±; BRELSPOND; L. S. TAGGART ET AL; CHARLENE COTTRILL ET VIR; CHARLES EUGENE ALLMAN ET UX; MICHAEL A. TOOTHMAN ET UX; CHARLES EUGENE ALLMAN ET UX. 151 AC±; 29.21 AC±; 24 AC±; 34 AC±; 18 AC±; ORLAN HADSEL ROWE ET AL; NORMAN D. FLEMING ET UX; BETTY M. TARULLI ET AL; MARGARET A. THOMAS ET VIR; ANNA E. VALENTINE; MRS. DORSEY P. CHRISLIP. 57 AC±; 16.91 AC±; 76.8 AC±; 28 AC±; 135 AC±; 87.75 AC±; PROPOSED WORK: DRILL CONVERT DRILL DEEPER X REDRILL FRACTURE OR STIMULATE X PLUG OFF OLD FORMATION PERFORATE NEW FORMATION X OTHER PHYSICAL CHANGE IN WELL (SPECIFY) MOD-BHL PLUG & ABANDON CLEAN OUT & REPLUG TARGET FORMATION MARCELLUS ESTIMATED DEPTH 6,800' TVD 20,500' MD WELL OPERATOR ANTERO RESOURCES CORP. DESIGNATED AGENT DIANNA STAMPER - CT CORPORATION SYSTEM ADDRESS 1815 WYNKOOP ST. ADDRESS 5400 D BIG TYLER ROAD DENVER, CO 80202 CHARLESTON, WV 25313

10,016' TO TOP HOLE

LATITUDE 39°22'30"

Antero Resources Corporation Well No. Hayes Unit 2H

Table with 3 columns: Tract No., Surface Owner, and Acreage. Lists various landowners and their respective acreages.

Table with 2 columns: Royalty Owner and Acreage. Lists royalty owners and their acreages.

NOTES: WELL 2H TOP HOLE INFORMATION: N: 318,122ft E: 1,601,240ft LAT: 39°21'53.42" LON: 80°54'37.53" BOTTOM HOLE INFORMATION: N: 307,853ft E: 1,606,310ft LAT: 39°20'12.72" LON: 80°53'30.55" WEST VIRGINIA COORDINATE SYSTEM OF 1927 NORTH ZONE. ZONE WAS DERIVED FROM MEASUREMENTS TAKEN WITH TRIMBLE GEOXT SUBMETER MAPPING GRADE GPS UNIT. PLAT ORIENTATION, CORNER, AND WELL REFERENCE TIE LINES ARE BASED ON GRID NORTH.

(NAD) 83 (UTM) ZONE 17 COORDS: WELL 2H TOP HOLE INFORMATION: N: 4,357,277m E: 507,731m BOTTOM HOLE INFORMATION: N: 4,354,175m E: 509,323m



Table with 2 columns: LINE and BEARING/DIST. Lists line bearings and distances for lines L1 through L7.

WV NORTH ZONE GRID NORTH

LONGITUDE 80°52'30"

3,701'

LONGITUDE 80°52'30"

13,890' TO BOTTOM HOLE



THE UNDERSIGNED, HEREBY CERTIFY THAT THIS PLAT IS CORRECT TO THE BEST OF MY KNOWLEDGE AND BELIEF AND SHOWS ALL THE INFORMATION REQUIRED BY LAW AND THE RULES ISSUED AND PERSCRIBED BY THE DEPARTMENT OF ENVIRONMENTAL PROTECTION.



STATE OF WEST VIRGINIA, DIVISION OF ENVIRONMENTAL PROTECTION, OFFICE OF OIL AND GAS

WILLOW LAND SURVEYING PLLC 220 MASONIC AVE. PENNSBORO WEST VIRGINIA 26415

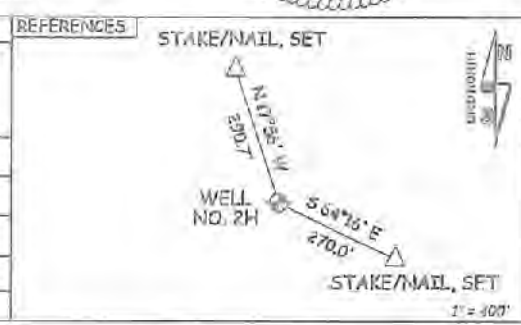
(NAD) 27 (UTM) ZONE 17 COORDS: WELL 2H TOP HOLE INFORMATION: N: 14,294,766ft E: 1,665,734ft POINT OF ENTRY INFORMATION: N: 14,295,276ft E: 1,667,319ft BOTTOM HOLE INFORMATION: N: 14,284,607ft E: 1,670,973ft

NOTE: NO OCCUPIED DWELLINGS OR BUILDINGS TWO THOUSAND FIVE HUNDRED (2,500) SQUARE FEET OR LARGER USED TO HOUSE OR SHELTER DAIRY CATTLE OR POULTRY HUSBANDRY ARE LOCATED WITHIN SIX HUNDRED TWENTY-FIVE (625) FEET OF THE CENTER OF THE WELL PAD.



JOB # 17-014WA DRAWING # HAYES2HR SCALE 1" = 2000' MINIMUM DEGREE OF ACCURACY SUBMETER PROVEN SOURCE OF ELEV. SUBMETER MAPPING GRADE GPS STATE OF WEST VIRGINIA DEPARTMENT OF ENERGY DIVISION OF OIL AND GAS

LEGEND: Surface Owner Boundary Lines +/- Interior Surface Tracts +/- Existing Fence Found monument, as noted THOMAS SUMMERS P.S. 2109 DATE 07/18/18 OPERATOR'S WELL# HAYES UNIT #2H



Form with fields for WELL TYPE, LOCATION, SURFACE OWNER, PROPOSED WORK, WELL OPERATOR, ADDRESS, COUNTY, DISTRICT, COUNTY, PERMIT, and other well details.

LETTIE WELL PAD & WATER CONTAINMENT PAD AS-BUILT EROSION CONTROL IMPROVEMENTS

LOCATION COORDINATES:

ACCESS ROAD ENTRANCE
LATITUDE: 39.385306 LONGITUDE: -80.912305 (NAD 83)
N 4357319.87 E 507554.43 (UTM ZONE 17 METERS)

CENTER OF TANK
LATITUDE: 39.385734 LONGITUDE: -80.912124 (NAD 83)
N 4357367.42 E 507559.98 (UTM ZONE 17 METERS)

CENTROID OF PAD
LATITUDE: 39.384936 LONGITUDE: -80.910350 (NAD 83)
N 4357278.99 E 507722.90 (UTM ZONE 17 METERS)

GENERAL DESCRIPTION:

THE ACCESS ROAD(S), WATER CONTAINMENT PAD, AND WELL PAD HAVE BEEN CONSTRUCTED TO AID IN THE DEVELOPMENT OF INDIVIDUAL MARCELLUS SHALE GAS WELLS.

FLOODPLAIN NOTES:

THE SITE IS LOCATED WITHIN FEMA FLOOD ZONE "X" PER FEMA FLOOD MAP #54085C0125C.

MISS UTILITY STATEMENT:

ANTERO RESOURCES CORPORATION HAS NOTIFIED MISS UTILITY OF WEST VIRGINIA FOR THE LOCATING OF UTILITIES PRIOR TO THIS PROJECT DESIGN; TICKET #1419246536. IN ADDITION, MISS UTILITY WAS CONTACTED BY THE CONTRACTOR PRIOR TO THE START OF CONSTRUCTION FOR THIS PROJECT.

ENTRANCE PERMIT:

ANTERO RESOURCES CORPORATION HAS OBTAINED AN ENCROACHMENT PERMIT (FORM MM-109) FROM THE WEST VIRGINIA DEPARTMENT OF TRANSPORTATION DIVISION OF HIGHWAYS, PRIOR TO COMMENCEMENT OF CONSTRUCTION ACTIVITIES.

ENVIRONMENTAL NOTES:

STREAM AND WETLAND DELINEATIONS WERE PERFORMED IN MAY 2014, JULY 2014, & OCTOBER 2016 BY K.C. HARVEY ENVIRONMENTAL, LLC TO REVIEW THE SITE FOR WATERS AND WETLANDS THAT ARE MOST LIKELY WITHIN THE REGULATORY PURVIEW OF THE U.S. ARMY CORPS OF ENGINEERS (USACE) AND/OR THE WEST VIRGINIA DEPARTMENT OF ENVIRONMENTAL PROTECTION (WVDEP). THE OCTOBER 31, 2016 DESIGN OVERVIEW MAP WAS PREPARED BY K.C. HARVEY ENVIRONMENTAL, LLC AND SUMMARIZES THE RESULTS OF THE FIELD DELINEATION. THE MAP DOES NOT, IN ANY WAY, REPRESENT A JURISDICTIONAL DETERMINATION OF THE LANDWARD LIMITS OF WATERS AND WETLANDS WHICH MAY BE REGULATED BY THE USACE OR THE WVDEP.

GEOTECHNICAL NOTES:

A SUBSURFACE INVESTIGATION OF THE SITE WAS PERFORMED BY PENNSYLVANIA SOIL & ROCK, INC. BETWEEN FEBRUARY 11, 2015 & FEBRUARY 25, 2015. THE REPORT PREPARED BY PENNSYLVANIA SOIL & ROCK, INC. DATED MARCH 27, 2015 REVISED JANUARY 31, 2017, REFLECTS THE RESULTS OF THE SUBSURFACE INVESTIGATION. THE INFORMATION AND RECOMMENDATIONS CONTAINED IN THIS REPORT WERE USED IN THE PREPARATION OF THESE PLANS. PLEASE REFER TO THE SUBSURFACE INVESTIGATION REPORT BY PENNSYLVANIA SOIL & ROCK, INC. FOR ADDITIONAL INFORMATION, AS NEEDED.

PROJECT CONTACTS:

OPERATOR:

ANTERO RESOURCES CORPORATION
535 WHITE OAKS BLVD.
BRIDGEPORT, WV 26330
PHONE: (304) 842-4100
FAX: (304) 842-4102

ELI WAGONER - ENVIRONMENTAL ENGINEER
OFFICE: (304) 842-4058 CELL: (304) 475-9770

JON MCEVERS - OPERATIONS SUPERINTENDENT
OFFICE: (303) 367-6799 CELL: (303) 808-2423

AARON KUNZLER - CONSTRUCTION SUPERVISOR
CELL: (405) 227-8344

ROBERT B. WIRKS - FIELD ENGINEER
OFFICE: (304) 842-4100 CELL: (304) 627-7405

CHARLES E. COMPTON, III - SURVEYING COORDINATOR
CELL: (304) 719-6449

RICHARD LYLES - LAND AGENT
CELL: (770) 378-8833

ENGINEER/SURVEYOR:

NAVITUS ENGINEERING, INC.
CYRUS S. KUMP, PE - PROJECT MANAGER/ENGINEER
OFFICE: (866) 662-4185 CELL: (540) 886-6747

ENVIRONMENTAL:

KC HARVEY ENVIRONMENTAL, LLC
SHANNON THOMPSON - STAFF SCIENTIST
OFFICE: (740) 373-1970 CELL: (970) 398-8250

GEOTECHNICAL:

PENNSYLVANIA SOIL & ROCK, INC.
CHRISTOPHER W. SAMIGOS - PROJECT ENGINEER
OFFICE: (412) 372-4000 CELL: (412) 589-0662

RESTRICTIONS NOTES:

1. THERE ARE NO LAKES, PONDS, OR RESERVOIRS WITHIN 100 FEET OF THE WELL PAD AND LOD. THERE ARE WETLANDS & PERENNIAL STREAMS ADJACENT TO THE STAGING AREA & WATER CONTAINMENT PAD THAT HAS REMAINED UNDISTURBED.
2. THERE ARE NO NATURALLY PRODUCING TROUT STREAMS WITHIN 300 FEET OF THE WELL PAD AND LOD.
3. THERE ARE NO GROUNDWATER INTAKE OR PUBLIC WATER SUPPLY FACILITIES WITHIN 1000 FEET OF THE WELL PAD AND LOD.
4. THERE ARE NO APPARENT EXISTING WATER WELLS OR DEVELOPED SPRINGS WITHIN 250 FEET OF THE WELL(S) BEING DRILLED.
5. THERE ARE NO OCCUPIED DWELLING STRUCTURES WITHIN 625 FEET OF THE CENTER OF THE WELL PAD.
6. THERE ARE NO AGRICULTURAL BUILDINGS LARGER THAN 2,500 SQUARE FEET WITHIN 625 FEET OF THE CENTER OF THE WELL PAD.

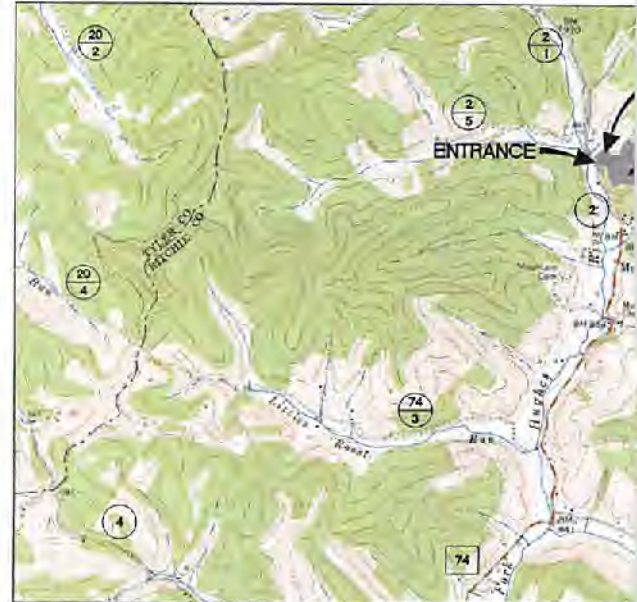
REPRODUCTION NOTE

THESE PLANS WERE CREATED TO BE PLOTTED ON 22"x34" (ANSI B) PAPER. HALF SCALE DRAWINGS ARE ON 11"x17" (ANSI B) PAPER.

THESE PLANS WERE CREATED FOR COLOR PLOTTING AND ANY REPRODUCTIONS IN GRAY SCALE OR COLOR MAY RESULT IN A LOSS OF INFORMATION AND SHOULD NOT BE USED FOR CONSTRUCTION PURPOSES.

CLAY DISTRICT, RITCHIE COUNTY
CABIN RUN-NORTH FORK HUGHES

USGS 7.5 PENNSBORO



WEST VIRGINIA COUNTY MAP



(NOT TO SCALE)

AS-BUILT CERTIFICATIONS:

THE DRAWINGS, CONSTRUCTION NOTES, AND REFERENCE DIAGRAMS ATTACHED HERETO HAVE BEEN PREPARED IN ACCORDANCE WITH THE WEST VIRGINIA CODE OF STATE RULES, DIVISION OF ENVIRONMENTAL PROTECTION, OFFICE OF OIL AND GAS CRS 36-8.

WATER CONTAINMENT PAD & SEDIMENT CONTROL PLAN

JUL 23 2018

WV Department of
Environmental Protection

SHEET INDEX:

- 1 - COVER SHEET
- 2 - LEGEND
- 3 - OVERALL PLAN SHEET INDEX
- 4 - ACCESS ROAD, WELL PAD, & WATER CONTAINMENT PAD AS-BUILT PLAN
- 5 - ACCESS ROAD AS-BUILT PROFILE, WELL PAD, WATER CONTAINMENT PAD, & STOCKPILE AS-BUILT SECTIONS

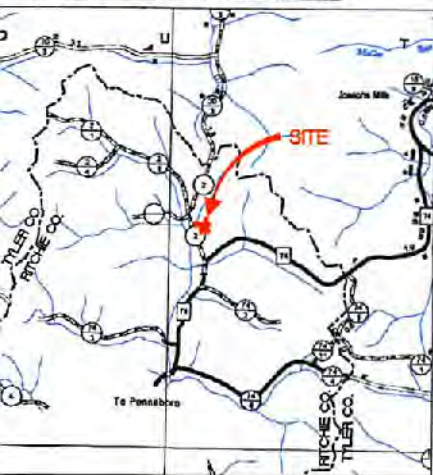
CLAY COUNTY, WEST VIRGINIA
RIVER WATERSHED
ROAD MAP



WEST VIRGINIA STATE PLANE COORDINATE SYSTEM
NORTH ZONE, NAD83
ELEVATION BASED ON NAVD83
ESTABLISHED BY SURVEY GRADE GPS & OPUS
POST-PROCESSING

LETTIE LIMITS OF DISTURBANCE AREA (AC)	
Total Site	
Access Road "A" (554')	1.94
Access Road "B" (37')	0.05
Staging Area	1.14
Well Pad	6.86
Water Containment Pad	1.47
Excess/Topsoil Material Stockpiles	3.22
Total Affected Area	14.68
Total Wooded Acres Disturbed	
	12.34
Impacts to Christopher K. Haymond TM 4-09	
Access Road "A" (487')	1.70
Access Road "B" (24')	0.02
Staging Area	1.14
Well Pad	6.86
Water Containment Pad	0.76
Excess/Topsoil Material Stockpiles	3.22
Total Affected Area	13.70
Total Wooded Acres Disturbed	
	12.25
Impacts to Michael D. Hammett TM 4-13	
Access Road "A" (67')	0.24
Access Road "B" (13')	0.03
Water Containment Pad	0.71
Total Affected Area	0.98
Total Wooded Acres Disturbed	
	0.09

WVDOH COUNTY ROAD MAP



0 5000
SCALE: 1" = 5000'

MISS Utility of West Virginia
1-800-245-4848
West Virginia State Law
(Section XIV, Chapter 24-C)
Requires that you call two
business days before you dig in
the state of West Virginia.
IT'S THE LAW!!

Proposed Well Name	WV North NAD 27	WV North NAD 83	UTM (METERS) Zone 17	NAD 83 Lat & Long
Leeroy Unit 1H	N 318123.36 E 1601170.59	N 318162.77 E 1569729.51	N 4357278.66 E 507709.97	LAT 39-21-53.796 LONG -80-54-37.6009
Leeroy Unit 2H	N 318127.48 E 1601180.55	N 318161.85 E 1569739.47	N 4357278.44 E 507713.01	LAT 39-21-53.7510 LONG -80-54-37.6740
Leeroy Unit 3H	N 318126.58 E 1601190.51	N 318160.98 E 1569749.43	N 4357278.22 E 507715.05	LAT 39-21-53.7437 LONG -80-54-37.5470
Master Unit 1H	N 318125.67 E 1601200.47	N 318160.08 E 1569759.39	N 4357278.00 E 507719.09	LAT 39-21-53.7354 LONG -80-54-37.4200
Master Unit 2H	N 318124.77 E 1601210.43	N 318159.19 E 1569769.35	N 4357277.78 E 507722.13	LAT 39-21-53.7291 LONG -80-54-37.2930
Master Unit 3H	N 318123.88 E 1601220.39	N 318158.29 E 1569779.31	N 4357277.55 E 507725.17	LAT 39-21-53.7218 LONG -80-54-37.1660
Hayes Unit 1H	N 318122.98 E 1601230.35	N 318157.40 E 1569789.27	N 4357277.33 E 507728.21	LAT 39-21-53.7145 LONG -80-54-37.0390
Hayes Unit 2H	N 318122.09 E 1601240.31	N 318156.50 E 1569799.23	N 4357277.11 E 507731.24	LAT 39-21-53.7072 LONG -80-54-36.9121
Christopher Unit 1H	N 318121.19 E 1601250.27	N 318155.61 E 1569809.19	N 4357276.89 E 507734.28	LAT 39-21-53.6999 LONG -80-54-36.7851
Christopher Unit 2H	N 318120.29 E 1601260.23	N 318154.71 E 1569819.15	N 4357276.67 E 507737.32	LAT 39-21-53.6926 LONG -80-54-36.6581
Christopher Unit 3H	N 318119.40 E 1601270.19	N 318153.82 E 1569829.11	N 4357276.44 E 507740.36	LAT 39-21-53.6852 LONG -80-54-36.5311
Well Pad Elevation	970.0			

NOTES:

1. ALL BMP'S MUST REMAIN IN PLACE AND FUNCTIONAL UNTIL ALL AREAS WITHIN THE LIMIT OF DISTURBANCE ARE COMPLETE AND PERMANENTLY STABILIZED. MAINTENANCE MUST INCLUDE INSPECTION OF ALL EROSION AND SEDIMENT CONTROLS AFTER EACH RUNOFF EVENT IN EXCESS OF 0.5" AND ON A BIWEEKLY BASIS.
2. THE CONSTRUCTION SITE SHOULD BE STABILIZED AS SOON AS POSSIBLE AFTER COMPLETION. ESTABLISHMENT OF FINAL STABILIZATION MUST BE INITIATED NO LATER THAN 7 DAYS AFTER REACHING FINAL GRADE. FINAL STABILIZATION MEANS THAT ALL SOIL-DISTURBING ACTIVITIES ARE COMPLETED, AND THAT EITHER A PERMANENT VEGETATIVE COVER WITH A DENSITY OF 70% OR GREATER HAS BEEN ESTABLISHED OR THAT THE SURFACE HAS BEEN STABILIZED BY HARD COVER SUCH AS PAVEMENT OR BUILDINGS. IT SHOULD BE NOTED THAT THE 70% REQUIREMENT REFERS TO THE TOTAL AREA VEGETATED AND NOT JUST A PERCENT OF THE SITE.
3. ALL PERMANENT SEDIMENT CONTROL MEASURES CAN BE REMOVED AFTER THE SITE IS PERMANENTLY STABILIZED AND APPROVAL IS RECEIVED FROM THE WVDEP.
4. ANY AREAS DISTURBED BY REMOVAL OF CONTROLS SHALL BE REPAIRED, STABILIZED, AND PERMANENTLY SEEDED.
5. THE AS-BUILT INFORMATION SHOWN HEREON REFLECTS FIELD DATA COLLECTED RELATING TO THE FINAL GRADING OF THE DISTURBED AREA AS OF MARCH 15, 2018. NAVIUS ENGINEERING IS NOT RESPONSIBLE FOR ANY CHANGES MADE TO THE SITE AFTER THE ABOVE MENTIONED DATES.
6. THE EXISTING CONTAINMENT BERM AROUND THE WELL PAD SHALL BE REPAIRED AS NECESSARY TO ENSURE 100% CONTAINMENT OF ALL FLUIDS PRIOR TO DRILLING OPERATIONS
7. THE EXISTING EGREGESSES TO THE WELL PAD SHALL HAVE THE MOUNTABLE BERMS REPAIRED AS NECESSARY TO ENSURE 100% CONTAINMENT OF ALL FLUIDS PRIOR TO DRILLING OPERATIONS.

NAVIUS
ENERGY ENGINEERING

Telephone: (888) 662-4185 | www.NaviusEng.com

DATE	REVISION



THIS DOCUMENT WAS PREPARED FOR:
ANTERO RESOURCES CORPORATION

COVER SHEET
LETTIE
WELL PAD & WATER CONTAINMENT PAD
CLAY DISTRICT
RITCHIE COUNTY, WEST VIRGINIA

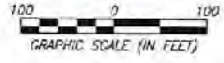
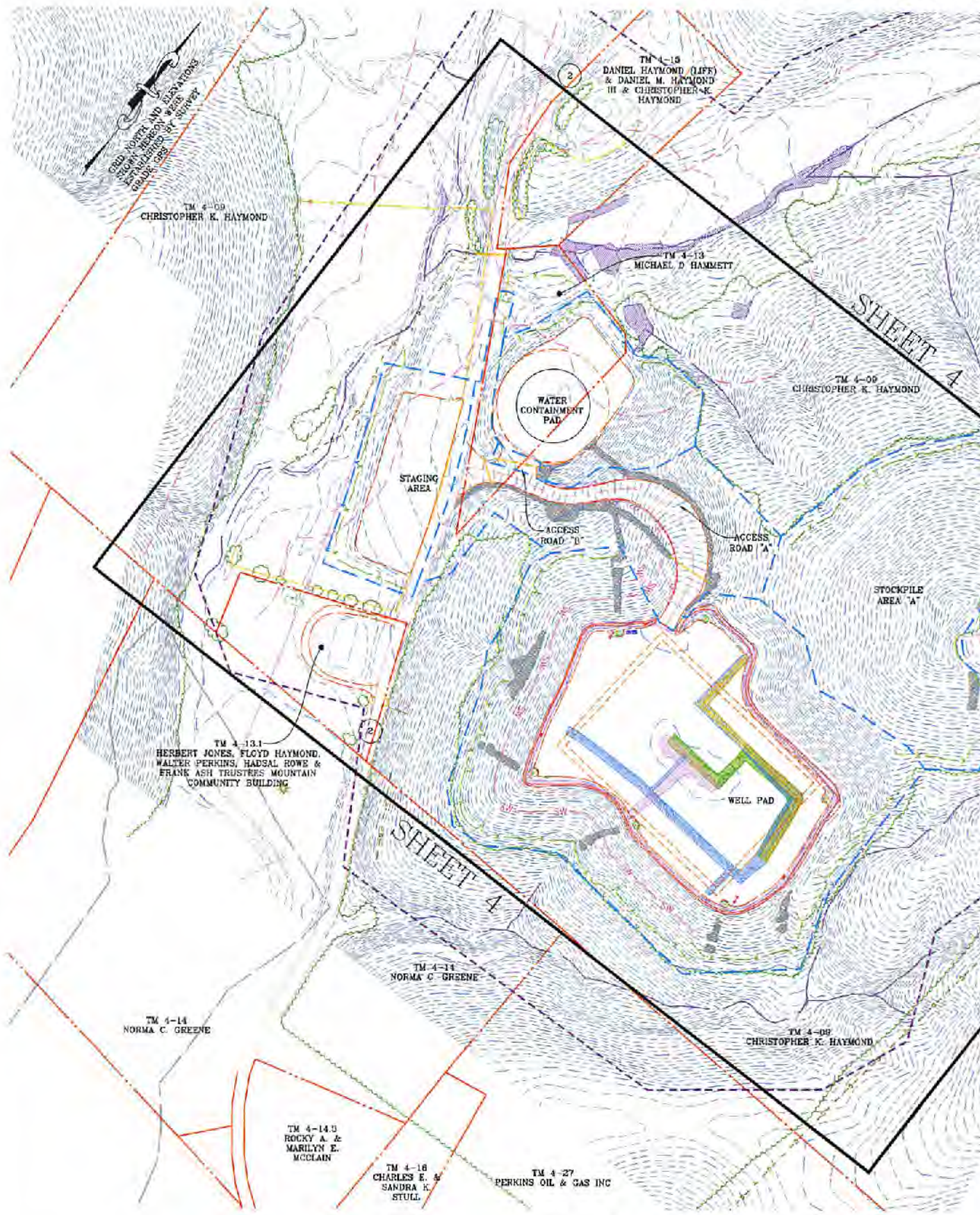


DATE: 03/28/2018
SCALE: AS SHOWN
SHEET 1 OF 5

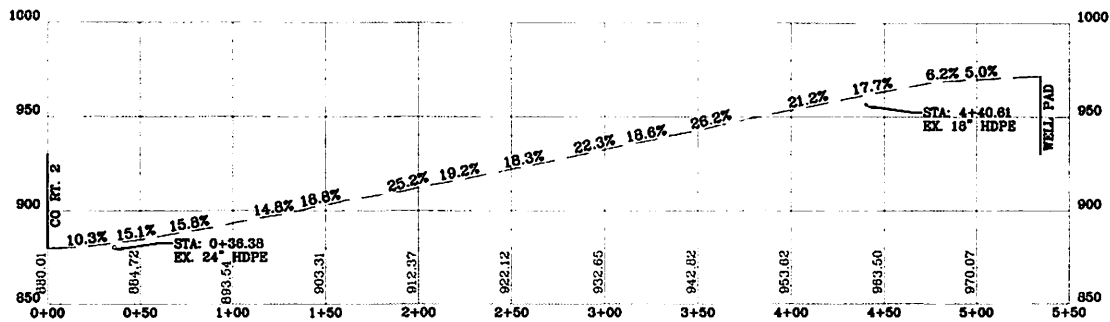
LEGEND

LEGEND		
EX. INDEX CONTOUR & CONTOUR LABEL		PR. INDEX CONTOUR
EX. INTERMEDIATE CONTOUR		PR. INTERMEDIATE CONTOUR
EX. PROPERTY LINE		PR. INTERMEDIATE CONTOUR
EX. TOP OF BERM		PR. INDEX ROAD
EX. ROAD EDGE OF GRAVEL/DIRT		PR. INTERMEDIATE CONTOUR
EX. ROAD EDGE OF PAVEMENT		PR. PADS/STOCK PILES
EX. ROAD CENTERLINE		PERMITTED LIMIT
EX. GUARDRAIL		MODIFICATION LINE
EX. BRIDGE		PR. ROAD/IMPROVEMENT
EX. DITCHLINE/DRAINAGE FEATURE		PR. ROAD CENTERLINE
EX. RIP-RAP		PR. GUARDRAIL
EX. CULVERT		PR. ROCK CONSTRUCTION
EX. TREELINE		PR. AIR BRIDGE
EX. BUILDING		PR. CULVERT
EX. MISCELLANEOUS FEATURE		PR. DITCH
EX. 100 YR FEMA FLOODPLAIN		PR. RIP-RAP TRAIL
EX. DELINEATED STREAM		PR. OUTLET PROTECTION
EX. DELINEATED WETLAND/POND		PR. DIVERSION
100' WETLAND/STREAM BUFFER		PR. ROCK LEVEL
STREAM/WETLAND DELINEATION STUDY AREA		PR. COMPOST FENCE
EX. FENCELINE		PR. SUPER SILT FENCE
EX. GATE		PR. WELL HEAD
EX. PERIMETER SAFETY FENCE		PR. PAD DEWATERING
EX. ACCESS GATE WITH EMERGENCY LIFELINE		PR. TOP OF PAD
EX. WELL HEAD ON DESIGNED PAD		PR. 220' X 320'
EX. GAS WELL		PR. SPOT SHOT
EX. PIPELINE		PR. PERIMETER
EX. PIPELINE R/W		PR. ACCESS GATE
EX. PIPELINE METER		PR. PIPELINE
EX. PIPELINE VALVE		PR. PIPELINE R/W
EX. PIT		PR. OVERHEAD UTILITY
EX. OVERHEAD UTILITY		PR. POWER POLE
EX. POWER POLE/GUY WIRE		PR. OVERHEAD UTILITY
EX. UNDERGROUND ELECTRIC		PR. WATERLINE
EX. UNDERGROUND TELEPHONE		BORING LOCATION
EX. UNDERGROUND FIBER OPTIC		X-SECTION/PROTECTION
EX. UTILITY R/W		X-SECTION/PROTECTION
EX. WATERLINE		X-SECTION/PROTECTION
EX. WATER WELL/EX. SPRING		X-SECTION/PROTECTION
EX. COMPOST SOCK		X-SECTION/PROTECTION
EX. SUPER SILT FENCE		X-SECTION/PROTECTION
EX. SILT FENCE		MATCHLINE
APPROX. LOCATION OF SLIDE AREA		EX. METER
APPROX. LOCATION OF BORROW/ SPOIL AREA		EX. TANK
PR. TOE BENCH		EX. COMBUSTOR
EX. APPROX. SURFACE & SUB-SURFACE ELECTRIC LINE AREA		EX. GPU
EX. APPROX. SURFACE & SUB-SURFACE DUMP LINE AREA		EX. SEPARATOR
EX. APPROX. SURFACE & SUB-SURFACE WELL LINE AREA		EX. VRT
EX. APPROX. SURFACE & SUB-SURFACE SALES LINE AREA		EX. KNOCK-OUT

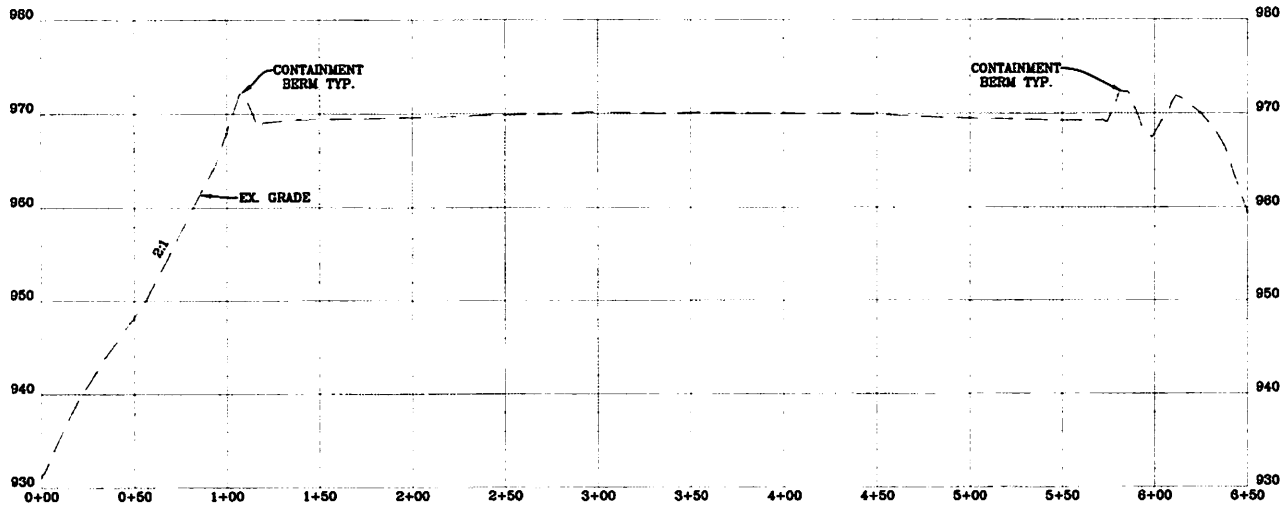
OVERALL PLAN S



ACCESS ROAD AS-BUILT PROFILE CONTAINMENT PAD, & STOCKPI

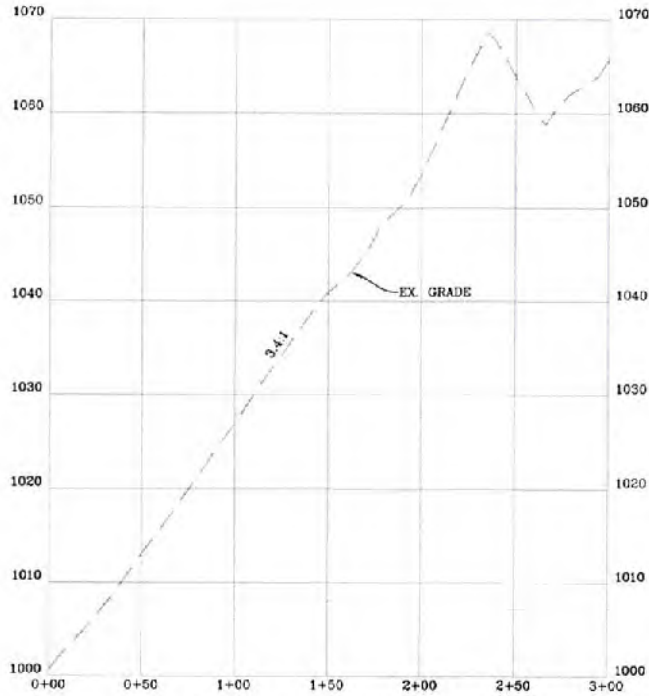


ACCESS ROAD "A" AS-BUILT PROFILE
SCALE: HORIZ. 1" = 50' VERT. 1" = 50'



WELL PAD AS-BUILT CROSS-SECTION "A-A"
SCALE: HORIZ. 1" = 50' VERT. 1" = 10'

PROFILE, WELL PAD, WATER CONTAINMENT PAD AS-BUILT SECTIONS



STOCKPILE AREA "A" AS-BUILT CROSS-SECTION "C-C"

SCALE: HORIZ. 1" = 50' VERT. 1" = 10'

RECEIVED
Office of Oil and Gas

JUL 23 2018

WV Department of
Environmental Protection



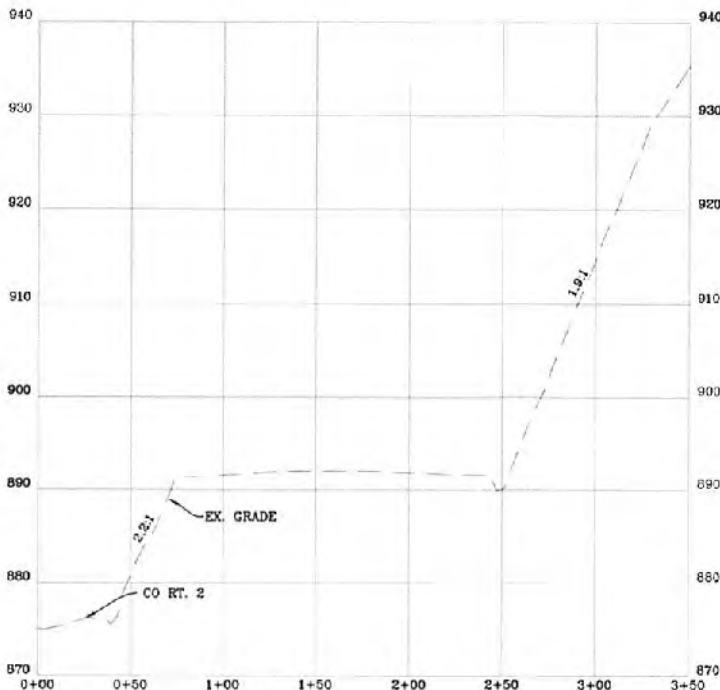
REVISION

DATE



THIS DOCUMENT
WAS PREPARED FOR:
ANTERO RESOURCES
CORPORATION

ACCESS ROAD AS-BUILT PROFILES, WELL PAD,
WCP, & STOCKPILE AS-BUILT SECTIONS
LETTIE
WELL PAD & WATER CONTAINMENT PAD
CLAY DISTRICT
RITCHIE COUNTY, WEST VIRGINIA



WATER CONTAINMENT PAD AS-BUILT CROSS-SECTION "B-B"

SCALE: HORIZ. 1" = 50' VERT. 1" = 10'



DATE: 03/26/2018

SCALE: AS SHOWN

SHEET 5 OF 5