



ANTERO RESOURCES CORPORATION

Location: Ritchie County, WV
Field: Ritchie
Facility: Jackson Pad

Slot: Slot B
Well: Maul Unit 2H
Wellbore: Maul Unit 2H PWB



Grid System: NAD27 / UTM Zone 17 North, US feet
True vertical depths are referenced to H&P 519 (RKB)
Reference wellbore measured depths are referenced to H&P 519 (RKB)
H&P 519 (RKB) to Mean Sea Level: 1052 feet
Mean Sea Level to Ground level (At Slot: Slot B): -1052 feet
Other wellbore MDs are referenced to each well's default MD datum
Created by: esteban on 2023-08-06, Database: WA_MPL_EASTERNUS_Sbth

Location Information			
Facility Name	Grid East (US ft)	Grid North (US ft)	Longitude
Jackson Pad	14267246.330	39°17'21.2374"N	80°59'1.0934"W
Slot	Local N (ft)	Grid North (US ft)	Longitude
Slot B	-9.92	14267276.300	39°17'21.5538"N
Comment	Maul Unit 2H		
H&P 519 (RKB) to Ground level (At Slot: Slot B)			
Mean Sea Level to Ground level (At Slot: Slot B)			
H&P 519 (RKB) to Mean Sea Level			

Well Profile Data						
Design Comment	MD (ft)	Inc (°)	Azi (°)	TVD (ft)	Local N (ft)	VS (ft)
Time On	3417.00	25.450	246.090	3154.69	-501.69	141.48
Prod. to Bottom	3488.00	25.450	246.090	3216.99	-513.72	141.48
Dir. to Bottom	3666.00	25.450	246.090	3289.23	-527.65	147.05
End of 30 Arc	3662.25	27.462	241.428	3375.40	-546.66	152.53
Curve ROP	6778.01	27.462	241.428	5696.40	-1123.59	354.16
Curve KOP	7124.92	69.812	161.054	6289.00	-1656.50	842.53
POE	7377.28	90.000	161.054	6333.00	-1690.27	1089.69
Landing Pt.	23912.82	90.000	161.054	6333.00	-17530.06	17295.33
BHL						

Well Data			
Slot	Well	Wellbore	Wellpath
Slot B	Maul Unit 2H	Maul Unit 2H AVB	Maul Unit 2H AWP Proj. 23904'
Slot B	Maul Unit 2H	Maul Unit 2H PWB	Maul Unit 2H PWP Rev-CO

Use specified (HDGM) Dip: 66.86° Field: 5194.87
Magnetic North is 6.67° West of True North (as of 8/11/2023)
Grid North is 0.01° East of True North
To correct azimuth from True to Grid subtract 0.01 degrees
To correct azimuth from Magnetic to Grid subtract 7.68 degrees

RECEIVED
Office Of Oil and Gas
APR 30 2024
WV Department of
Environmental Protection

RECEIVED
Office Of Oil and Gas
APR 30 2024
WV Department of
Environmental Protection

RECEIVED
Office Of Oil and Gas
APR 30 2024
WV Department of
Environmental Protection

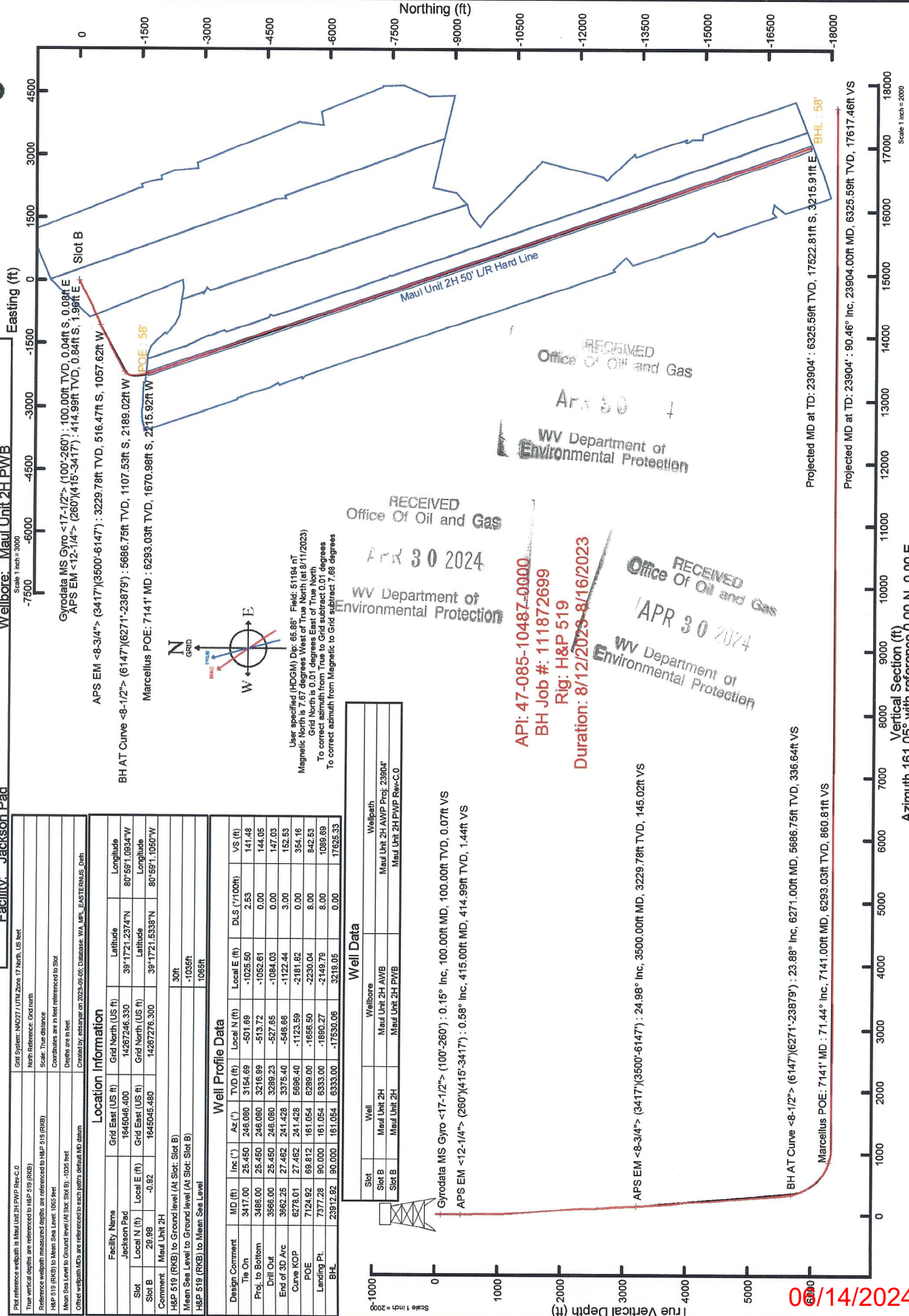
API: 47-085-10487-0000
BH Job #: 111872699
Rig: H&P 519
Duration: 8/12/2023-8/16/2023

Gyrodala MS Gyro <17-12'> (100°-260') : 0.15° Inc, 100.00ft MD, 100.00ft TVD, 0.07ft VS
APS EM <12-1/4'> (260°)(415°-3417') : 0.58° Inc, 415.00ft MD, 414.99ft TVD, 1.44ft VS

APS EM <8-3/4'> (3417°)(3500°-6147') : 24.98° Inc, 3500.00ft MD, 3229.78ft TVD, 145.02ft VS

BH AT Curve <8-1/2'> (6147°)(6271°-23879') : 23.89° Inc, 6271.00ft MD, 5686.76ft TVD, 336.64ft VS

Marcellus POE: 7141° MD : 71.44° Inc, 7141.00ft MD, 6293.03ft TVD, 860.81ft VS



2024/08/14

Vertical Section (ft)
Azimuth 161.05° with reference 0.00 N, 0.00 E

Projected MD at TD: 23904' : 90.46° Inc, 23904.00ft MD, 6325.59ft TVD, 17617.46ft VS
Projected MD at TD: 23904' : 90.46° Inc, 23904.00ft MD, 6325.59ft TVD, 17617.46ft VS

Scale 1 inch = 200



Actual Wellpath Report

Maul Unit 2H AWP Proj: 23904'
Page 1 of 13



REFERENCE WELLPATH IDENTIFICATION	
Operator	ANTERO RESOURCES CORPORATION
Field	Ritchie
Facility	Jackson Pad
Slot	Slot B
Well	Maul Unit 2H
API	47-085-10487-0000
Wellbore	Maul Unit 2H AWB

REPORT SETUP INFORMATION	
Projection System	NAD27 / UTM Zone 17 North, US feet
North Reference	Grid
Scale	0.999600
Convergence at slot	0.01° East
Software System	WellArchitect® 6.0
User	Edsaryar
Report Generated	9/5/2023 at 4:40:25 PM
Database	WA_MPL_EASTERNUS_Defn

WELLPATH LOCATION						
	Local coordinates		Grid coordinates		Geographic coordinates	
	North[ft]	East[ft]	Easting[US ft]	Northing[US ft]	Latitude	Longitude
Slot Location	29.98	-0.92	1645045.48	14267276.30	39°17'21.5338"N	80°59'1.1050"W
Facility Reference Pt			1645046.40	14267246.33	39°17'21.2374"N	80°59'1.0934"W
Field Reference Pt			0.00	0.00	0°00'0.0000"	85°29'19.3013"W

WELLPATH DATUM	
Calculation method	Minimum curvature
Horizontal Reference Pt	Slot
Vertical Reference Pt	H&P 519 (RKB)
MD Reference Pt	H&P 519 (RKB)
Field Vertical Reference	Mean Sea Level
	H&P 519 (RKB) to Facility Vertical Datum
	H&P 519 (RKB) to Mean Sea Level
	H&P 519 (RKB) to Ground Level at Slot (Slot B)
	Section Origin
	Section Azimuth
	1065.00ft
	1065.00ft
	30.00ft
	N 0.00, E 0.00 ft
	161.05°

RECEIVED
Office Of Oil and Gas
APR 30 2024
WV Department of
Environmental Protection

Actual Wellpath Report

Maul Unit 2H AWP Proj: 23904'
Page 2 of 13

REFERENCE WELL PATH IDENTIFICATION	
Operator	ANTERO RESOURCES CORPORATION
Field	Ritchie
Facility	Jackson Pad
Slot	Slot B
Well	Maul Unit 2H
API	47-085-10487-0000
Wellbore	Maul Unit 2H AWB

WELLPATH DATA (255 stations) † = interpolated, ‡ = extrapolated station																
MD (ft)	Inclination (°)	Azimuth (°)	TVD (ft)	Vert Sect (ft)	North (ft)	East (ft)	Grid East (US ft)	Grid North (US ft)	Latitude	Longitude	Closure Dist (ft)	Closure Dir (°)	DLS (°/100ft)	Build Rate (°/100ft)	Turn Rate (°/100ft)	Comments
0.00	0.00	117.470	0.00	0.00	0.00	0.00	1645045.48	14267276.30	39°17'21.5338"N	80°59'1.1050"W	0.00	0.000	0.00	0.00	0.00	
30.00	0.00	117.470	30.00	0.00	0.00	0.00	1645045.48	14267276.30	39°17'21.5338"N	80°59'1.1050"W	0.00	0.000	0.00	0.00	0.00	
100.00	0.150	117.470	100.00	0.07	-0.04	0.08	1645045.56	14267276.26	39°17'21.5334"N	80°59'1.1040"W	0.09	117.470	0.21	0.21	0.00	Gyrodatta MS Gyro <17-1/2"> (100'-260')
200.00	0.260	101.420	200.00	0.28	-0.15	0.42	1645045.90	14267276.15	39°17'21.5323"N	80°59'1.0997"W	0.45	109.367	0.12	0.11	-16.09	
260.00	0.420	108.460	260.00	0.48	-0.24	0.76	1645046.24	14267276.06	39°17'21.5314"N	80°59'1.0954"W	0.80	107.769	0.28	0.27	11.73	
415.00	0.580	122.350	414.99	1.44	-0.84	1.96	1645047.44	14267275.46	39°17'21.5254"N	80°59'1.0801"W	2.14	113.256	0.13	0.10	8.96	APS EIM <12-1/4"> (260')(415'-3417')
505.00	1.210	206.190	504.98	2.46	-1.94	1.93	1645047.41	14267274.36	39°17'21.5146"N	80°59'1.0805"W	2.74	135.169	1.43	0.70	93.16	
593.00	3.550	227.190	592.90	4.22	-4.63	-0.48	1645045.00	14267271.68	39°17'21.4880"N	80°59'1.1112"W	4.65	185.927	2.79	2.66	23.86	
683.00	5.530	235.520	682.82	6.51	-8.97	-6.10	1645039.38	14267267.33	39°17'21.3492"N	80°59'1.1826"W	10.85	214.201	2.91	2.20	9.26	
773.00	8.440	248.460	771.94	7.97	-13.86	-15.82	1645029.67	14267262.45	39°17'21.3968"N	80°59'1.3063"W	21.03	228.787	3.66	3.23	14.38	
862.00	11.320	253.890	859.62	7.83	-18.68	-30.29	1645015.20	14267257.63	39°17'21.3492"N	80°59'1.4903"W	35.59	238.340	3.40	3.24	6.10	
951.00	14.130	251.500	946.42	7.31	-24.55	-48.99	1644996.51	14267251.76	39°17'21.2912"N	80°59'1.7282"W	54.80	243.382	3.21	3.16	-2.69	
1042.00	16.460	246.060	1034.20	8.35	-33.31	-71.31	1644974.20	14267243.00	39°17'21.2047"N	80°59'2.0121"W	78.71	244.963	3.00	2.56	-5.98	
1136.00	19.070	242.460	1123.71	11.80	-45.82	-97.10	1644948.42	14267230.50	39°17'21.0811"N	80°59'2.3401"W	107.37	244.741	3.01	2.78	-3.83	
1230.00	21.660	243.950	1211.82	16.24	-60.54	-126.32	1644919.21	14267215.78	39°17'20.9356"N	80°59'2.7118"W	140.08	244.393	2.83	2.78	1.59	
1325.00	24.660	240.440	1299.16	22.06	-78.03	-159.34	1644886.21	14267198.30	39°17'20.7628"N	80°59'3.1317"W	177.42	243.908	3.46	3.14	-3.69	
1420.00	27.130	241.890	1384.61	29.16	-98.02	-195.69	1644849.87	14267178.32	39°17'20.5653"N	80°59'3.5941"W	218.86	243.394	2.68	2.60	1.53	
1514.00	28.100	243.840	1467.90	35.35	-117.88	-234.46	1644811.11	14267158.47	39°17'20.3691"N	80°59'4.0873"W	262.43	243.309	1.41	1.03	2.07	
1608.00	28.260	241.600	1550.78	41.78	-138.22	-273.91	1644771.68	14267138.13	39°17'20.1681"N	80°59'4.5890"W	306.81	243.223	1.14	0.17	-2.38	
1702.00	28.080	239.880	1633.63	49.72	-159.91	-312.62	1644732.99	14267116.46	39°17'19.9538"N	80°59'5.0814"W	351.14	242.910	0.88	-0.19	-1.83	
1797.00	28.020	240.680	1717.47	58.07	-182.05	-351.42	1644694.21	14267094.32	39°17'19.7350"N	80°59'5.5749"W	395.77	242.613	0.40	-0.06	0.84	
1892.00	27.870	242.140	1801.40	65.52	-203.36	-390.50	1644655.13	14267070.12	39°17'19.5245"N	80°59'6.0721"W	440.28	242.491	0.74	-0.16	1.54	
1986.00	27.820	241.090	1884.51	72.72	-224.23	-429.13	1644616.52	14267052.16	39°17'19.3183"N	80°59'6.5634"W	484.18	242.412	0.52	-0.05	-1.12	
2081.00	28.180	242.050	1968.39	80.06	-245.46	-468.35	1644577.32	14267030.94	39°17'19.1085"N	80°59'7.0622"W	528.77	242.341	0.61	0.38	1.01	
2176.00	29.000	243.460	2051.81	86.61	-266.26	-508.77	1644536.92	14267010.14	39°17'18.9029"N	80°59'7.5763"W	574.23	242.375	1.12	0.86	1.48	
2270.00	29.880	242.430	2133.67	93.13	-287.28	-549.91	1644495.79	14266989.13	39°17'18.6953"N	80°59'8.0996"W	620.43	242.417	1.08	0.94	-1.10	
2365.00	27.430	242.450	2217.03	99.95	-308.36	-590.29	1644455.42	14266968.06	39°17'18.4870"N	80°59'8.6133"W	665.98	242.418	2.58	-2.58	0.02	
2459.00	25.950	248.190	2301.03	104.22	-326.02	-628.59	1644417.14	14266950.41	39°17'18.3125"N	80°59'9.1004"W	708.11	242.587	3.16	-1.57	6.11	
2554.00	25.430	250.560	2386.64	105.43	-340.53	-667.12	1644378.62	14266935.91	39°17'18.1692"N	80°59'9.5905"W	749.01	242.958	1.21	-0.55	2.49	
2648.00	26.200	248.330	2471.26	106.59	-354.91	-705.44	1644340.32	14266921.53	39°17'18.0271"N	80°59'10.0779"W	789.69	243.293	1.32	0.82	-2.37	

RECEIVED
Office Of Oil and Gas
APR 30 2024
WV Department of
Environmental Protection

Actual Wellpath Report

Maul Unit 2H AWP Proj: 23904'
Page 3 of 13

REFERENCE WELLPATH IDENTIFICATION	
Operator	ANTERO RESOURCES CORPORATION
Field	Ritchie
Facility	Jackson Pad
Slot	Slot B
Well	Maul Unit 2H
API	47-085-10487-0000
Wellbore	Maul Unit 2H AWB

WELLPATH DATA (255 stations)																
MD (ft)	Inclination (°)	Azimuth (°)	TVD (ft)	Vert Sect (ft)	North (ft)	East (ft)	Grid East (US ft)	Grid North (US ft)	Latitude	Longitude	Closure Dist (ft)	Closure Dir (°)	DLS (°/100ft)	Build Rate (°/100ft)	Turn Rate (°/100ft)	Comments
2743.00	28.560	246.390	2555.61	109.43	-371.75	-745.75	1644300.03	14266904.70	39°17'17.8607"N	80°59'10.5905"W	833.27	243.504	2.66	2.48	-2.04	
2837.00	28.730	244.740	2635.11	113.74	-390.39	-786.77	1644259.03	14266886.06	39°17'17.6765"N	80°59'11.1122"W	878.30	243.610	0.86	0.18	-1.76	
2932.00	28.240	243.390	2721.61	119.24	-410.20	-827.51	1644218.30	14266866.26	39°17'17.4808"N	80°59'11.6305"W	923.60	243.632	0.85	-0.52	-1.42	
3026.00	27.150	241.570	2804.84	125.74	-430.38	-866.26	1644179.57	14266846.10	39°17'17.2815"N	80°59'12.1233"W	967.28	243.581	1.47	-1.16	-1.94	
3121.00	26.540	244.300	2889.60	131.80	-449.90	-904.45	1644141.40	14266826.58	39°17'17.0865"N	80°59'12.6090"W	1010.16	243.553	1.45	-0.64	2.87	
3216.00	26.600	246.770	2974.57	135.89	-467.49	-943.12	1644102.74	14266808.99	39°17'16.9147"N	80°59'13.1009"W	1052.62	243.633	1.16	0.06	2.60	
3310.00	26.820	248.550	3058.62	138.38	-483.49	-982.06	1644063.82	14266793.00	39°17'16.7566"N	80°59'13.5961"W	1094.62	243.788	0.85	0.02	1.89	
3404.00	25.770	246.260	3142.96	141.00	-499.42	-1020.36	1644025.53	14266777.08	39°17'16.5992"N	80°59'14.0834"W	1136.03	243.920	1.40	-0.90	-2.44	
3417.00	25.450	246.080	3154.69	141.48	-501.69	-1025.50	1644020.39	14266774.81	39°17'16.5768"N	80°59'14.1487"W	1141.64	243.931	2.53	-2.46	-1.38	
3500.00	24.980	244.500	3229.78	145.02	-516.47	-1057.62	1643988.28	14266760.04	39°17'16.4308"N	80°59'14.5573"W	1176.99	243.972	0.99	-0.57	-1.90	APS EM <-8.3/4"> (34.17)(3500-6147)
3595.00	25.670	245.250	3315.65	149.39	-533.72	-1094.42	1643951.50	14266742.79	39°17'16.2604"N	80°59'15.0252"W	1217.62	244.003	0.80	0.73	0.79	
3691.00	28.480	247.600	3401.12	152.87	-551.15	-1134.47	1643911.47	14266725.37	39°17'16.0881"N	80°59'15.5347"W	1261.26	244.088	3.13	2.93	2.45	
3785.00	27.820	245.510	3484.01	156.34	-568.79	-1175.15	1643870.80	14266707.74	39°17'15.9139"N	80°59'16.0521"W	1305.57	244.173	1.26	-0.70	-2.22	
3880.00	28.320	245.210	3567.83	160.77	-587.42	-1215.78	1643830.18	14266689.11	39°17'15.7297"N	80°59'16.5689"W	1350.26	244.212	0.55	0.53	-0.32	
3974.00	30.070	244.660	3649.89	165.66	-606.85	-1257.31	1643788.67	14266669.69	39°17'15.5377"N	80°59'17.0971"W	1396.10	244.235	1.88	1.86	-0.59	
4069.00	28.390	240.830	3732.79	172.32	-628.05	-1298.55	1643747.45	14266648.50	39°17'15.3283"N	80°59'17.6216"W	1442.46	244.189	2.65	-1.77	-4.03	
4163.00	26.690	237.960	3816.14	181.06	-650.14	-1335.96	1643710.05	14266626.42	39°17'15.1100"N	80°59'18.0975"W	1485.76	244.050	2.29	-1.81	-3.05	
4258.00	26.350	238.030	3901.15	190.65	-672.63	-1371.93	1643674.10	14266603.94	39°17'14.8878"N	80°59'18.5550"W	1527.95	243.882	0.36	-0.36	0.07	
4352.00	26.230	240.900	3985.43	199.01	-693.77	-1407.78	1643638.26	14266582.80	39°17'14.6788"N	80°59'19.0110"W	1569.45	243.765	1.36	-0.13	3.05	
4447.00	26.250	242.360	4070.64	205.88	-713.73	-1444.74	1643601.32	14266562.86	39°17'14.4816"N	80°59'19.4810"W	1611.42	243.710	0.68	0.02	1.54	
4541.00	27.930	245.550	4154.33	211.13	-732.49	-1483.20	1643562.88	14266544.11	39°17'14.2963"N	80°59'19.9702"W	1654.21	243.717	2.36	1.79	3.39	
4636.00	26.890	245.410	4238.66	215.38	-750.64	-1522.99	1643523.71	14266525.96	39°17'14.1169"N	80°59'20.4762"W	1697.93	243.763	1.10	-1.09	-0.15	
4730.00	27.660	246.630	4322.21	219.15	-768.14	-1562.35	1643483.76	14266508.47	39°17'13.9440"N	80°59'20.9768"W	1740.97	243.819	1.01	0.82	1.30	
4824.00	27.490	243.920	4405.54	223.52	-786.33	-1601.86	1643444.26	14266490.28	39°17'13.7643"N	80°59'21.4794"W	1784.46	243.854	1.35	-0.18	-2.88	
4919.00	29.650	242.060	4488.97	229.91	-806.98	-1642.32	1643403.82	14266469.64	39°17'13.5602"N	80°59'21.9940"W	1829.87	243.832	2.46	2.27	-1.96	
5013.00	27.410	239.100	4571.55	238.03	-828.99	-1681.43	1643364.72	14266447.64	39°17'13.3427"N	80°59'22.4915"W	1874.69	243.755	2.82	-2.38	-3.15	
5108.00	27.570	240.270	4655.82	246.67	-851.12	-1719.29	1643326.88	14266425.52	39°17'13.1240"N	80°59'22.9730"W	1918.43	243.663	0.59	0.17	1.23	
5202.00	31.830	245.290	4737.47	253.23	-872.29	-1760.72	1643288.47	14266404.36	39°17'12.9149"N	80°59'23.4999"W	1964.95	243.646	5.24	4.53	5.34	
5299.00	31.930	244.800	4819.84	258.59	-893.90	-1807.17	1643239.04	14266382.76	39°17'12.7013"N	80°59'24.0907"W	2016.16	243.681	0.29	0.10	-0.51	
5393.00	30.130	241.890	4900.39	265.06	-915.61	-1850.47	1643195.75	14266361.06	39°17'12.4868"N	80°59'24.6415"W	2064.60	243.674	2.50	-1.91	-3.11	

RECEIVED
Office Of Oil and Gas
APR 30 2024
WV Department of
Environmental Protection

Actual Wellpath Report

Maul Unit 2H AWP Proj: 23904'
Page 4 of 13

REFERENCE WELLPATH IDENTIFICATION		Well	Maul Unit 2H
Operator	ANTERO RESOURCES CORPORATION	API	47-085-10487-0000
Field	Ritchie	Wellbore	Maul Unit 2H AWB
Facility	Jackson Pad		
Slot	Slot B		

WELLPATH DATA (255 stations) † = interpolated, ‡ = extrapolated station																
MD [ft]	Inclination [°]	Azimuth [°]	TVD [ft]	Vert Sect [ft]	North [ft]	East [ft]	Grid East [US ft]	Grid North [US ft]	Latitude	Longitude	Closure Dist [ft]	Closure Dir [°]	DLS [%/100ft]	Build Rate [°/100ft]	Turn Rate [°/100ft]	Comments
5487.00	28.380	240.550	4982.40	272.89	-937.71	-1890.74	1643155.50	14266338.96	39°17'12.2684"N	80°59'25.1536"W	2110.50	243.621	1.99	-1.86	-1.41	
5582.00	27.270	241.290	5066.41	280.69	-959.27	-1929.49	1643116.77	14266317.42	39°17'12.0553"N	80°59'25.6484"W	2154.79	243.565	1.22	-1.17	0.78	
5676.00	27.100	244.250	5150.03	286.88	-978.92	-1967.66	1643078.61	14266297.78	39°17'11.8612"N	80°59'26.1319"W	2197.72	243.550	1.45	-0.18	3.15	
5771.00	25.080	241.800	5235.35	292.68	-997.83	-2004.90	1643041.38	14266278.87	39°17'11.6743"N	80°59'26.6056"W	2239.49	243.541	2.41	-2.13	-2.58	
5866.00	24.920	240.340	5321.45	299.63	-1017.25	-2040.04	1643006.26	14266259.46	39°17'11.4824"N	80°59'27.0525"W	2279.60	243.497	0.67	-0.17	-1.54	
5960.00	28.150	242.130	5405.54	306.75	-1037.42	-2076.86	1642969.46	14266239.29	39°17'11.2830"N	80°59'27.5208"W	2321.55	243.457	3.54	3.44	1.90	
6055.00	26.870	240.170	5489.80	314.28	-1058.58	-2115.30	1642931.03	14266218.14	39°17'11.0740"N	80°59'28.0096"W	2365.39	243.415	1.65	-1.35	-2.06	
6147.00	23.310	237.520	5573.10	322.47	-1078.70	-2148.70	1642897.65	14266198.03	39°17'10.8751"N	80°59'28.4345"W	2404.27	243.342	4.06	-3.87	-2.88	
6271.00	23.880	231.430	5636.75	336.64	-1107.53	-2189.02	1642857.34	14266169.21	39°17'10.2939"N	80°59'29.3165"W	2452.25	243.163	2.02	0.46	-4.91	BH AT Curve <8-1/2"> (6147)-(6271)-(23879')
6365.00	29.180	217.960	5770.90	355.57	-1137.51	-2218.04	1642828.33	14266139.25	39°17'10.2939"N	80°59'29.8943"N	2492.72	242.849	8.50	5.64	-14.33	
6459.00	31.460	204.500	5852.13	385.92	-1177.95	-2242.34	1642804.04	14266098.82	39°17'9.8943"N	80°59'29.6255"W	2532.92	242.286	7.61	2.43	-14.32	
6553.00	36.000	194.910	5930.35	426.72	-1227.03	-2259.64	1642786.74	14266049.76	39°17'9.4092"N	80°59'29.8456"W	2571.30	241.497	7.43	4.83	-10.20	
6648.00	39.870	183.440	6005.35	478.15	-1284.50	-2268.67	1642777.27	14265992.32	39°17'8.8412"N	80°59'29.9605"W	2607.07	240.482	8.45	4.07	-12.07	
6719.00†	41.428	177.761	6059.24	521.70	-1330.70	-2268.67	1642777.27	14265946.13	39°17'8.3845"N	80°59'29.9662"W	2630.53	239.611	5.65	2.19	-8.00	Sycamore: 6719' MD
6742.00	41.990	176.000	6076.41	536.42	-1345.98	-2268.28	1642778.11	14265930.86	39°17'8.2335"N	80°59'29.9557"W	2637.57	239.315	5.65	2.44	-7.66	
6837.00	48.620	173.280	6143.20	602.04	-1413.16	-2261.89	1642784.50	14265863.71	39°17'7.5695"N	80°59'29.8744"W	2667.05	238.004	7.27	6.98	-2.86	
6850.00†	49.539	172.907	6151.71	611.64	-1422.91	-2260.71	1642785.68	14265853.96	39°17'7.4731"N	80°59'29.8594"W	2671.23	237.813	7.40	7.07	-2.87	Middlesex: 6850' MD
6931.00	55.290	170.790	6201.10	674.67	-1486.41	-2251.57	1642794.82	14265790.49	39°17'6.0486"N	80°59'29.5693"W	2731.99	234.999	8.90	8.87	-0.84	
7026.00	63.720	169.990	6249.26	755.38	-1567.04	-2237.89	1642808.49	14265709.89	39°17'5.9611"N	80°59'29.5491"W	2735.78	234.828	7.43	6.76	-3.43	Burkett: 7036' MD
7036.00†	64.396	169.647	6253.64	764.26	-1575.90	-2236.30	1642810.08	14265701.04	39°17'5.3654"N	80°59'29.3936"W	2761.07	233.659	7.43	6.79	-3.30	Tully: 7103' MD
7103.00†	68.942	167.438	6280.17	825.24	-1636.17	-2224.04	1642822.31	14265640.79	39°17'5.2119"N	80°59'29.3486"W	2767.46	233.357	7.43	6.81	-3.16	
7120.00	70.100	166.900	6286.12	841.08	-1651.69	-2220.52	1642825.85	14265625.27	39°17'5.0213"N	80°59'29.2901"W	2775.33	232.981	7.01	6.38	-3.06	Marcellus POE: 7141' MD
7141.00†	71.441	166.258	6293.03	860.81	-1670.98	-2215.92	1642830.45	14265605.99	39°17'4.3426"N	80°59'29.0587"W	2802.91	231.636	7.01	6.40	-2.96	
7215.00	76.180	164.070	6313.66	931.67	-1739.65	-2197.72	1642848.65	14265537.35	39°17'3.4684"N	80°59'28.7175"W	2838.07	229.899	7.76	7.51	-2.00	
7309.00	83.240	162.190	6330.45	1024.03	-1828.09	-2170.88	1642875.47	14265448.94	39°17'2.5754"N	80°59'28.3522"W	2875.62	228.153	8.03	8.02	0.36	
7404.00	90.860	162.530	6335.33	1118.81	-1918.44	-2142.15	1642904.19	14265358.63	39°17'1.6910"N	80°59'27.9860"W	2915.12	226.465	1.24	-0.95	-0.80	
7498.00	89.970	161.780	6334.65	1212.79	-2007.91	-2113.35	1642932.98	14265269.20	39°17'0.8097"N	80°59'27.6078"W	2956.20	224.815	0.50	-0.10	-0.49	
7592.00	89.880	161.320	6334.77	1306.79	-2097.08	-2083.60	1642962.72	14265180.06	39°16'59.9207"N	80°59'27.2190"W	2999.65	223.190	0.21	0.03	-0.21	
7687.00	89.910	161.120	6334.95	1401.79	-2187.02	-2053.01	1642993.29	14265090.16	39°16'59.9207"N	80°59'26.8348"W	3044.99	221.629	1.94	1.93	0.27	
7781.00	91.720	161.370	6333.61	1495.77	-2276.02	-2022.79	1643023.50	14265001.20	39°16'59.9207"N	80°59'26.8348"W	3044.99	221.629	1.94	1.93	0.27	

RECEIVED
Office Of Oil and Gas
APR 30 2024
WV Department of
Environmental Protection



Actual Wellpath Report

Maul Unit 2H AWP Proj: 23904'

Page 5 of 13



REFERENCE WELLPATH IDENTIFICATION

Operator	ANTERO RESOURCES CORPORATION	Well	Maul Unit 2H
Field	Ritchie	API	47-085-10487-0000
Facility	Jackson Pad	Wellbore	Maul Unit 2H AWB
Slot	Slot B		

WELLPATH DATA (255 stations)

ID	Inclination	Azimuth	TVD	Vert Sect	North	East	Grid East	Grid North	Latitude	Longitude	Closure Dist	Closure Dir	DLS	Build Rate	Turn Rate	Comments
(ft)	(°)	(°)	(ft)	(ft)	(ft)	(ft)	(US ft)	(US ft)			(ft)	(°)	("/100ft)	("/100ft)	(°/100ft)	
7876.00	90.650	159.920	6331.65	1590.75	-2365.62	-1991.32	1643054.96	14264911.63	39°16'58.1554"N	80°59'26.4346"W	3092.17	220.090	1.90	-1.13	-1.53	
7970.00	89.750	160.730	6331.32	1684.74	-2454.13	-1959.67	1643086.60	14264823.15	39°16'57.2805"N	80°59'26.0322"W	3140.55	218.608	1.29	-0.96	-0.86	
8065.00	89.450	160.370	6331.98	1779.73	-2543.71	-1928.04	1643118.22	14264733.61	39°16'56.3951"N	80°59'25.6301"W	3191.83	217.161	0.49	-0.32	-0.38	
8159.00	89.970	160.750	6332.46	1873.73	-2632.35	-1896.75	1643149.49	14264645.01	39°16'55.5190"N	80°59'25.2324"W	3244.52	215.775	0.69	0.54	-0.40	
8253.00	88.950	160.310	6333.34	1967.72	-2720.97	-1865.42	1643180.81	14264556.42	39°16'54.6431"N	80°59'24.8341"W	3299.01	214.433	1.18	-1.09	-0.47	
8348.00	89.290	160.600	6334.80	2062.70	-2810.48	-1833.65	1643212.57	14264466.94	39°16'53.7583"N	80°59'24.4301"W	3355.75	213.122	0.47	0.36	0.31	
8442.00	89.510	160.030	6335.79	2156.69	-2898.99	-1801.98	1643244.22	14264378.48	39°16'52.8836"N	80°59'24.0275"W	3413.39	211.865	0.65	0.23	-0.61	
8537.00	89.200	159.590	6336.86	2251.66	-2988.14	-1769.20	1643276.99	14264289.36	39°16'52.0023"N	80°59'23.6107"W	3472.62	210.629	0.57	-0.33	-0.46	
8631.00	89.170	159.810	6338.19	2345.62	-3076.30	-1736.59	1643309.59	14264201.24	39°16'51.1310"N	80°59'23.1962"W	3532.61	209.445	0.24	-0.03	0.23	
8820.00	89.480	160.530	6340.42	2534.59	-3254.07	-1672.48	1643373.67	14264023.53	39°16'49.3738"N	80°59'22.3812"W	3658.71	207.202	0.41	0.16	0.38	
8915.00	90.280	160.450	6340.62	2629.58	-3343.62	-1640.75	1643405.39	14263934.03	39°16'48.4888"N	80°59'21.9778"W	3724.49	206.138	0.85	0.84	-0.08	
9009.00	89.940	160.430	6340.44	2723.57	-3432.19	-1609.28	1643436.84	14263845.49	39°16'47.6133"N	80°59'21.5778"W	3790.74	205.121	0.36	-0.36	-0.02	
9104.00	90.060	160.560	6340.44	2818.57	-3521.74	-1577.56	1643468.55	14263755.97	39°16'46.7282"N	80°59'21.1745"W	3858.93	204.130	0.19	0.13	0.14	
9198.00	90.180	159.940	6340.24	2912.56	-3610.21	-1545.80	1643500.30	14263667.54	39°16'45.8537"N	80°59'20.7707"W	3927.23	203.179	0.67	0.13	-0.66	
9292.00	89.850	159.140	6340.22	3006.53	-3698.28	-1512.94	1643533.15	14263579.51	39°16'44.9832"N	80°59'20.3530"W	3995.78	202.249	0.92	-0.35	-0.85	
9387.00	89.510	158.870	6340.75	3101.46	-3786.97	-1478.90	1643567.17	14263490.85	39°16'44.1066"N	80°59'19.9203"W	4065.50	201.332	0.46	-0.36	-0.28	
9481.00	90.460	160.030	6340.77	3195.42	-3874.99	-1445.91	1643600.15	14263402.87	39°16'43.2366"N	80°59'19.5009"W	4135.96	200.462	1.60	1.01	1.23	
9576.00	89.910	159.290	6340.46	3290.40	-3964.06	-1412.89	1643633.16	14263313.83	39°16'42.3562"N	80°59'19.0811"W	4208.33	199.617	0.97	-0.58	-0.78	
9670.00	90.490	158.980	6340.14	3384.34	-4051.90	-1379.41	1643666.63	14263226.03	39°16'41.4880"N	80°59'18.6555"W	4280.26	198.800	0.70	0.62	-0.33	
9858.00	90.120	160.470	6339.14	3572.28	-4228.24	-1314.26	1643731.74	14263049.78	39°16'39.7450"N	80°59'17.8274"W	4427.79	197.267	0.82	-0.20	0.79	
9953.00	90.580	160.980	6338.56	3667.28	-4317.91	-1282.91	1643763.09	14262960.12	39°16'38.8586"N	80°59'17.4288"W	4504.47	196.547	0.72	0.48	0.54	
10048.00	90.800	158.970	6337.41	3762.25	-4407.16	-1250.38	1643795.60	14262870.91	39°16'37.9785"N	80°59'17.0153"W	4581.10	195.839	2.13	0.23	-2.12	
10142.00	89.690	161.390	6337.01	3856.23	-4495.68	-1218.51	1643827.46	14262782.52	39°16'37.1025"N	80°59'16.6102"W	4657.79	195.165	2.83	-1.18	2.57	
10237.00	90.460	162.220	6336.88	3951.22	-4585.83	-1188.85	1643857.11	14262692.31	39°16'36.2105"N	80°59'16.2332"W	4737.43	194.534	1.19	0.81	0.87	
10331.00	89.230	159.970	6337.14	4045.21	-4674.75	-1158.39	1643887.55	14262603.43	39°16'35.3316"N	80°59'15.8461"W	4816.14	193.917	2.73	-1.31	-2.39	
10426.00	90.090	162.250	6337.70	4140.20	-4764.63	-1127.64	1643918.29	14262513.59	39°16'34.4432"N	80°59'15.4552"W	4896.25	193.315	2.56	0.91	2.40	
10520.00	90.000	162.140	6337.63	4234.18	-4854.13	-1098.90	1643947.02	14262424.13	39°16'33.5586"N	80°59'15.0898"W	4976.96	192.756	0.15	-0.10	-0.12	
10614.00	90.030	162.090	6337.60	4328.17	-4943.58	-1070.03	1643975.88	14262334.70	39°16'32.6744"N	80°59'14.7229"W	5058.06	192.213	0.06	0.03	-0.05	
10708.00	90.030	162.260	6337.56	4422.15	-5033.07	-1041.25	1644004.64	14262245.25	39°16'31.7899"N	80°59'14.3571"W	5139.65	191.689	0.18	0.00	0.18	
10803.00	89.970	161.970	6337.60	4517.13	-5123.48	-1012.08	1644033.81	14262154.88	39°16'30.8963"N	80°59'13.9863"W	5222.49	191.174	0.33	-0.13	-0.31	

RECEIVED
Office Of Oil and Gas
APR 30 2024
WV Department of
Environmental Protection

06/14/2024



Actual Wellpath Report

Maul Unit 2H AWP Proj: 23904'
Page 6 of 13



REFERENCE WELLPATH IDENTIFICATION	
Operator	ANTERO RESOURCES CORPORATION
Field	Ritchie
Facility	Jackson Pad
Slot	Slot B
Well	Maul Unit 2H
API	47-085-10487-0000
Wellbore	Maul Unit 2H AWB

MD (ft)	Inclination (°)	Azimuth (°)	TVD (ft)	Vert-Sect (ft)	North (ft)	East (ft)	Grid East (US ft)	Grid North (US ft)	Latitude	Longitude	Closure Dist (ft)	Closure Dir (°)	DLS (°/100ft)	Build Rate (°/100ft)	Turn Rate (°/100ft)	Comments
10898.00	89.780	162.040	6337.86	4612.12	-5213.83	-982.73	1644063.14	14262064.56	39°16'30.0032"N	80°59'13.6133"W	5305.64	190.674	0.16	-0.14	0.07	
10992.00	90.000	162.410	6338.04	4706.10	-5303.34	-954.03	1644091.63	14261975.09	39°16'29.1184"N	80°59'13.2486"W	5388.47	190.198	0.46	0.23	0.39	
11087.00	89.910	161.960	6338.12	4801.08	-5393.79	-924.97	1644120.88	14261884.68	39°16'28.2245"N	80°59'12.8791"W	5472.53	189.731	0.48	-0.09	-0.47	
11181.00	90.370	162.400	6337.89	4895.06	-5483.28	-896.20	1644149.64	14261795.23	39°16'27.3399"N	80°59'12.5135"W	5556.04	189.283	0.68	0.49	0.47	
11275.00	90.120	162.300	6337.49	4989.04	-5572.85	-867.70	1644178.13	14261705.69	39°16'26.4546"N	80°59'12.1513"W	5640.00	188.850	0.29	-0.27	-0.11	
11370.00	90.220	161.730	6337.20	5084.02	-5663.21	-838.37	1644207.45	14261615.37	39°16'25.5615"N	80°59'11.7795"W	5724.93	188.421	0.61	0.11	-0.60	
11464.00	90.180	160.600	6336.88	5178.02	-5752.17	-808.02	1644237.78	14261526.24	39°16'24.6821"N	80°59'11.3928"W	5808.65	187.996	1.20	-0.04	-1.20	
11559.00	90.550	160.910	6336.27	5273.02	-5841.86	-776.71	1644269.08	14261436.78	39°16'23.7956"N	80°59'10.9948"W	5893.27	187.573	0.51	0.39	0.33	
11653.00	90.030	160.910	6335.79	5367.02	-5930.69	-745.97	1644299.81	14261347.99	39°16'22.9176"N	80°59'10.6040"W	5977.42	187.169	0.55	-0.55	0.00	
11748.00	92.000	163.150	6334.11	5461.98	-6021.03	-716.67	1644329.10	14261257.69	39°16'22.0246"N	80°59'10.2316"W	6063.54	186.788	3.14	2.07	2.36	
11842.00	90.860	162.960	6331.77	5555.89	-6110.92	-689.28	1644356.48	14261167.83	39°16'21.1361"N	80°59'10.5919"W	6149.67	186.435	1.23	-1.21	-0.20	
11936.00	90.060	161.510	6331.01	5649.86	-6200.44	-660.60	1644385.15	14261078.36	39°16'20.2514"N	80°59'10.1299"W	6235.53	186.081	1.76	-0.85	-1.54	
12031.00	90.280	160.880	6330.73	5744.86	-6290.36	-629.98	1644415.76	14260988.47	39°16'19.3625"N	80°59'9.7394"W	6321.83	185.719	0.70	0.23	-0.66	
12125.00	90.180	160.970	6330.35	5838.86	-6379.20	-599.26	1644446.46	14260899.66	39°16'18.4844"N	80°59'8.8836"W	6407.29	185.367	0.14	-0.11	0.10	
12220.00	90.280	160.680	6329.97	5933.86	-6468.93	-568.06	1644477.65	14260809.97	39°16'17.5975"N	80°59'8.3429"W	6493.82	185.018	0.32	0.11	-0.31	
12314.00	89.450	158.820	6330.19	6027.83	-6557.11	-535.52	1644501.17	14260721.82	39°16'16.7259"N	80°59'7.9294"W	6578.95	184.669	2.17	-0.88	-1.98	
12409.00	89.850	161.190	6330.77	6122.80	-6646.38	-503.04	1644542.64	14260632.59	39°16'15.8435"N	80°59'7.5166"W	6665.39	184.328	2.53	0.42	2.49	
12503.00	89.260	160.730	6331.50	6216.80	-6735.23	-472.38	1644573.29	14260543.77	39°16'14.9653"N	80°59'7.1268"W	6751.78	184.012	0.80	-0.63	-0.49	
12692.00	89.780	161.450	6333.09	6405.79	-6914.03	-411.13	1644634.52	14260365.05	39°16'13.1980"N	80°59'6.3484"W	6926.24	183.403	0.47	0.28	0.38	
12786.00	90.120	160.260	6333.17	6499.79	-7002.83	-380.30	1644666.33	14260276.29	39°16'12.3203"N	80°59'5.9566"W	7013.14	183.108	1.32	0.36	-1.27	
12881.00	89.750	161.280	6333.28	6594.79	-7092.52	-349.01	1644696.61	14260186.63	39°16'11.4337"N	80°59'5.5590"W	7101.10	182.817	1.14	-0.39	1.07	
12975.00	89.260	161.340	6334.09	6688.78	-7181.56	-318.89	1644726.72	14260097.62	39°16'10.5536"N	80°59'4.7923"W	7188.64	182.542	0.53	-0.52	0.06	
13069.00	89.260	161.170	6335.30	6782.77	-7270.57	-288.69	1644756.91	14260008.65	39°16'9.6738"N	80°59'4.4068"W	7276.30	182.274	0.18	0.00	0.18	
13163.00	89.050	161.170	6336.69	6876.76	-7359.53	-258.35	1644787.23	14259919.73	39°16'8.7945"N	80°59'4.0157"W	7364.06	182.010	0.22	-0.22	0.00	
13258.00	89.320	161.020	6338.04	6971.75	-7449.39	-227.57	1644818.00	14259829.90	39°16'7.9063"N	80°59'3.6235"W	7452.87	181.750	0.33	0.28	-0.16	
13352.00	88.710	160.640	6339.65	7065.74	-7538.17	-196.71	1644848.85	14259741.16	39°16'7.0288"N	80°59'3.2882"W	7540.73	181.495	0.76	-0.65	-0.40	
13447.00	89.940	161.130	6340.77	7160.73	-7627.92	-165.60	1644879.94	14259651.44	39°16'6.1416"N	80°59'2.8527"W	7629.72	181.244	1.39	1.29	0.52	
13541.00	88.980	161.050	6341.66	7254.72	-7716.84	-135.14	1644910.39	14259562.56	39°16'5.2627"N	80°59'2.8411"W	7718.03	181.003	1.02	-1.02	-0.09	
13636.00	89.140	161.200	6343.22	7349.71	-7806.72	-104.41	1644941.11	14259472.71	39°16'4.3743"N	80°59'2.4506"W	7807.42	180.766	0.23	0.17	0.16	
13730.00	90.400	161.110	6343.60	7443.71	-7895.68	-74.05	1644971.46	14259383.79	39°16'3.4950"N	80°59'2.0647"W	7896.03	180.537	1.34	1.34	-0.10	

RECEIVED
Office Of Oil and Gas
APR 30 2024
WV Department of
Environmental Protection

06/14/2024

Actual Wellpath Report

Maui Unit 2H AWP Proj: 23904'
Page 7 of 13

REFERENCE WELLPATH IDENTIFICATION	
Operator	ANTERO RESOURCES CORPORATION
Field	Ritchie
Facility	Jackson Pad
Slot	Slot B
Well	Maui Unit 2H
API	47-085-10487-0000
Wellbore	Maui Unit 2H AWB

WELLPATH DATA (255 stations)																
MD (ft)	Inclination (°)	Azimuth (°)	TVD (ft)	Vert Sect (ft)	North (ft)	East (ft)	Grid East (US ft)	Grid North (US ft)	Latitude	Longitude	Closure Dist (ft)	Closure Dir (°)	DLS (°/100ft)	Build Rate (°/100ft)	Turn Rate (°/100ft)	Comments
13825.00	90.740	161.600	6342.65	7538.70	-7985.69	-43.68	1645001.82	14259293.82	39°16'2.6053"N	80°59'1.6788"W	7985.81	180.313	0.63	0.36	0.52	
13919.00	89.940	161.410	6342.09	7632.70	-8074.83	-13.86	1645001.62	14259204.71	39°16'1.7242"N	80°59'1.2999"W	8074.85	180.098	0.87	-0.85	-0.20	
14014.00	90.090	160.550	6342.07	7727.69	-8164.65	17.10	1645062.57	14259114.94	39°16'0.8365"N	80°59'0.9064"W	8164.66	179.880	0.92	0.16	-0.91	
14108.00	90.180	160.660	6341.85	7821.69	-8253.31	48.31	1645093.77	14259026.31	39°15'59.9601"N	80°59'0.5098"W	8253.45	179.665	0.15	0.10	0.12	
14203.00	89.880	160.790	6341.80	7916.69	-8342.99	79.67	1645125.12	14258936.67	39°15'59.0737"N	80°59'0.1112"W	8343.37	179.453	0.34	-0.32	0.14	
14297.00	89.940	160.530	6341.94	8010.69	-8431.68	110.80	1645156.24	14258848.01	39°15'58.1970"N	80°58'59.7157"W	8432.41	179.247	0.28	0.06	-0.28	
14391.00	90.340	161.070	6341.71	8104.69	-8520.45	141.72	1645187.14	14258759.27	39°15'57.3195"N	80°58'59.3228"W	8521.63	179.047	0.71	0.43	0.57	
14486.00	89.940	160.690	6341.48	8199.68	-8610.21	172.83	1645218.24	14258669.55	39°15'56.4323"N	80°58'58.9274"W	8611.95	178.850	0.58	-0.42	-0.40	
14580.00	89.940	160.510	6341.58	8293.68	-8698.87	204.06	1645249.45	14258580.92	39°15'55.5560"N	80°58'58.5307"W	8701.27	178.656	0.19	0.00	-0.19	
14674.00	90.280	161.840	6341.40	8387.68	-8787.84	234.39	1645279.77	14258491.99	39°15'54.6765"N	80°58'58.1452"W	8790.97	178.472	1.46	0.36	1.41	
14769.00	90.280	161.110	6340.94	8482.67	-8877.92	264.57	1645309.94	14258401.95	39°15'53.7862"N	80°58'57.7617"W	8881.86	178.293	0.77	0.00	-0.77	
14863.00	89.630	160.640	6341.01	8576.67	-8966.73	295.37	1645340.73	14258313.17	39°15'52.9083"N	80°58'57.3704"W	8971.59	178.113	0.85	-0.69	-0.50	
14958.00	90.150	161.340	6341.19	8671.67	-9056.55	326.31	1645371.66	14258223.39	39°15'52.0206"N	80°58'56.9772"W	9062.43	177.937	0.92	0.55	0.74	
15052.00	89.850	161.020	6341.19	8765.67	-9145.52	356.63	1645401.97	14258134.45	39°15'51.1411"N	80°58'56.5919"W	9152.47	177.767	0.47	-0.32	-0.34	
15146.00	89.510	160.590	6341.72	8859.67	-9234.30	387.54	1645432.86	14258045.72	39°15'50.2636"N	80°58'56.1991"W	9242.42	177.597	0.58	-0.36	-0.46	
15241.00	90.280	161.040	6341.89	8954.67	-9324.02	418.76	1645464.07	14257956.03	39°15'49.3768"N	80°58'55.8025"W	9333.42	177.428	0.94	0.81	0.47	
15336.00	89.780	160.750	6341.84	9049.67	-9413.79	449.85	1645495.15	14257866.30	39°15'48.4895"N	80°58'55.4074"W	9424.53	177.264	0.61	-0.53	-0.31	
15430.00	90.060	160.850	6341.97	9143.66	-9502.56	480.76	1645526.05	14257777.56	39°15'47.6120"N	80°58'55.0146"W	9514.71	177.104	0.32	0.30	0.11	
15524.00	90.150	160.720	6341.80	9237.66	-9591.32	511.70	1645556.98	14257688.84	39°15'46.7346"N	80°58'54.6215"W	9604.96	176.946	0.17	0.10	-0.14	
15619.00	89.910	160.380	6341.75	9332.66	-9680.90	543.33	1645588.60	14257599.29	39°15'45.8492"N	80°58'54.2195"W	9696.13	176.788	0.44	-0.25	-0.36	
15713.00	90.060	160.690	6341.78	9426.66	-9769.53	574.66	1645619.91	14257510.70	39°15'44.9732"N	80°58'53.8215"W	9786.41	176.634	0.37	0.16	0.33	
15808.00	90.340	161.030	6341.44	9521.65	-9859.27	605.81	1645651.04	14257420.99	39°15'44.0861"N	80°58'53.4258"W	9877.87	176.484	0.46	0.29	0.36	
15902.00	89.880	160.920	6341.26	9615.65	-9948.14	636.45	1645681.67	14257332.16	39°15'43.2077"N	80°58'53.0364"W	9968.48	176.339	0.50	-0.49	-0.12	
15997.00	90.000	161.020	6341.36	9710.65	-10037.95	667.42	1645712.64	14257242.39	39°15'42.3200"N	80°58'52.6428"W	10060.11	176.196	0.16	0.13	0.11	
16091.00	90.180	161.090	6341.22	9804.65	-10126.85	697.94	1645743.14	14257153.52	39°15'41.4412"N	80°58'52.2551"W	10150.88	176.057	0.21	0.19	0.07	
16280.00	90.340	161.390	6340.36	9993.65	-10305.81	758.73	1645803.90	14256974.63	39°15'39.6723"N	80°58'51.4828"W	10333.70	175.799	0.18	0.08	0.16	
16374.00	89.880	160.690	6340.18	10087.65	-10394.71	789.27	1645834.43	14256885.77	39°15'38.7935"N	80°58'51.0948"W	10424.63	175.658	0.89	-0.49	-0.74	
16468.00	90.280	160.820	6340.05	10181.65	-10483.46	820.25	1645865.40	14256797.06	39°15'37.9163"N	80°58'50.7011"W	10515.50	175.526	0.45	0.43	0.14	
16562.00	89.940	160.460	6339.87	10275.64	-10572.14	851.41	1645896.55	14256708.41	39°15'37.0397"N	80°58'50.3052"W	10606.37	175.396	0.53	-0.36	-0.38	
16657.00	91.420	161.680	6338.74	10370.63	-10661.99	882.23	1645927.35	14256618.59	39°15'36.1516"N	80°58'49.9137"W	10698.43	175.270	2.02	1.56	1.28	

RECEIVED
Office Of Oil and Gas
APR 30 2024
WV Department of
Environmental Protection

Actual Wellpath Report

Maul Unit 2H AWP Proj: 23904'
Page 8 of 13

REFERENCE WELLPATH IDENTIFICATION	
Operator	ANTERO RESOURCES CORPORATION
Field	Ritchie
Facility	Jackson Pad
Slot	Slot B
Well	Maul Unit 2H
API	47-085-10487-0000
Wellbore	Maul Unit 2H AWB

WELLPATH DATA (255 stations)																
MD (ft)	Inclination (°)	Azimuth (°)	TVD (ft)	Vert Sect (ft)	North (ft)	East (ft)	Grid East (US ft)	Grid North (US ft)	Latitude	Longitude	Closure Dist (ft)	Closure Dir (°)	DLS (°/100ft)	Build Rate (°/100ft)	Turn Rate (°/100ft)	Comments
16751.00	90.340	161.120	6337.29	10464.62	-10751.07	912.20	1645987.32	14256629.55	39°15'35.2711"N	80°58'49.5328"W	10789.70	175.150	1.29	-1.15	-0.60	
16845.00	90.180	161.130	6336.87	10558.62	-10840.01	942.61	1645987.71	14256440.64	39°15'34.3919"N	80°58'49.1465"W	10880.92	175.030	0.17	-0.17	0.01	
16939.00	90.090	161.120	6336.65	10652.62	-10928.96	973.02	1646018.11	14256351.73	39°15'33.5128"N	80°58'48.7601"W	10972.19	174.912	0.10	-0.10	-0.01	
17033.00	90.220	161.140	6336.39	10746.62	-11017.91	1003.42	1646048.50	14256262.82	39°15'32.6335"N	80°58'48.3739"W	11063.50	174.796	0.14	0.14	0.02	
17127.00	90.090	161.160	6336.14	10840.62	-11106.87	1033.79	1646078.86	14256173.90	39°15'31.7542"N	80°58'47.9880"W	11154.87	174.682	0.14	-0.14	0.02	
17222.00	90.250	161.160	6335.86	10935.62	-11196.78	1064.47	1646109.52	14256084.03	39°15'30.8655"N	80°58'47.5983"W	11247.26	174.569	0.17	0.17	0.00	
17316.00	90.150	161.350	6335.53	11029.61	-11285.79	1094.68	1646139.72	14255995.05	39°15'29.9857"N	80°58'47.2145"W	11338.75	174.450	0.23	-0.11	0.20	
17411.00	90.340	161.370	6335.12	11124.61	-11375.80	1125.04	1646170.07	14255905.07	39°15'29.0959"N	80°58'46.8287"W	11431.30	174.352	0.20	0.20	0.02	
17505.00	89.450	160.870	6335.29	11218.61	-11464.75	1155.46	1646200.48	14255816.16	39°15'28.2168"N	80°58'46.4423"W	11522.82	174.245	1.09	-0.95	-0.53	
17599.00	89.780	161.460	6335.93	11312.61	-11553.71	1185.81	1646230.81	14255727.23	39°15'27.3374"N	80°58'46.0568"W	11614.40	174.140	0.72	0.35	0.63	
17787.00	89.660	161.120	6336.84	11500.60	-11731.77	1246.11	1646291.09	14255549.24	39°15'25.5773"N	80°58'45.2907"W	11797.77	173.937	0.19	-0.06	-0.18	
17882.00	89.750	161.020	6337.33	11595.60	-11821.63	1276.93	1646321.90	14255459.42	39°15'24.6891"N	80°58'44.8991"W	11890.40	173.835	0.14	0.08	-0.11	
17976.00	90.150	160.940	6337.42	11689.60	-11910.50	1307.57	1646352.52	14255370.59	39°15'23.8107"N	80°58'44.5100"W	11982.06	173.735	0.43	0.43	-0.09	
18071.00	90.060	161.120	6337.24	11784.60	-12000.34	1338.45	1646383.39	14255280.78	39°15'22.9226"N	80°58'44.1176"W	12074.75	173.636	0.21	-0.09	0.19	
18165.00	89.570	160.820	6337.84	11878.60	-12089.20	1369.10	1646414.03	14255191.96	39°15'22.0443"N	80°58'43.7283"W	12166.48	173.539	0.61	-0.52	-0.32	
18259.00	89.780	161.140	6338.08	11972.60	-12178.07	1399.73	1646444.65	14255103.13	39°15'21.1659"N	80°58'43.3391"W	12258.25	173.443	0.41	0.22	0.34	
18448.00	89.820	161.350	6338.74	12161.60	-12357.03	1460.50	1646505.39	14254924.23	39°15'19.3969"N	80°58'42.5671"W	12443.04	173.259	0.11	0.02	0.11	
18543.00	89.880	161.080	6338.99	12256.60	-12446.97	1491.09	1646535.97	14254834.33	39°15'18.5079"N	80°58'42.1785"W	12535.97	173.169	0.29	0.06	-0.28	
18637.00	89.910	161.240	6339.16	12350.60	-12535.94	1521.44	1646566.31	14254745.40	39°15'17.6285"N	80°58'41.7929"W	12627.92	173.080	0.17	0.03	0.17	
18732.00	89.750	161.250	6339.44	12445.60	-12625.89	1551.99	1646596.85	14254655.48	39°15'16.7393"N	80°58'41.4049"W	12720.92	172.992	0.17	-0.17	0.01	
18826.00	89.660	161.500	6339.92	12539.59	-12714.97	1582.01	1646626.85	14254566.44	39°15'15.8589"N	80°58'41.0235"W	12813.01	172.908	0.28	-0.10	0.27	
18921.00	89.660	160.900	6340.49	12634.59	-12804.90	1612.62	1646657.46	14254476.55	39°15'14.9699"N	80°58'40.6346"W	12906.04	172.822	0.63	0.00	-0.63	
19015.00	89.850	161.230	6340.89	12728.59	-12893.81	1643.13	1646687.95	14254387.67	39°15'14.0911"N	80°58'40.2472"W	12998.08	172.738	0.41	0.20	0.35	
19110.00	89.780	161.230	6341.20	12823.59	-12983.76	1673.69	1646718.50	14254297.76	39°15'13.2020"N	80°58'39.8589"W	13091.19	172.655	0.07	-0.07	0.00	
19204.00	89.880	161.260	6341.48	12917.59	-13072.77	1703.92	1646748.71	14254208.79	39°15'12.3222"N	80°58'39.4750"W	13183.34	172.574	0.11	0.11	0.03	
19299.00	89.750	161.080	6341.78	13012.59	-13162.68	1734.58	1646779.36	14254118.91	39°15'11.4334"N	80°58'39.0855"W	13276.48	172.493	0.23	-0.14	-0.19	
19488.00	89.940	161.320	6342.29	13201.58	-13341.60	1795.49	1646840.25	14253940.07	39°15'09.6649"N	80°58'38.3118"W	13461.87	172.335	0.16	0.10	0.13	
19582.00	89.750	161.090	6342.55	13295.58	-13430.58	1825.77	1646870.52	14253851.12	39°15'08.7853"N	80°58'37.9271"W	13554.11	172.259	0.32	-0.20	-0.24	
19677.00	90.000	161.180	6342.76	13390.58	-13520.48	1856.49	1646901.22	14253761.26	39°15'07.8967"N	80°58'37.5369"W	13647.34	172.182	0.28	0.26	0.09	
19771.00	89.850	161.210	6342.88	13484.58	-13609.46	1886.79	1646931.51	14253672.31	39°15'07.0171"N	80°58'37.1520"W	13739.63	172.107	0.16	-0.16	0.03	

RECEIVED
Office Of Oil and Gas
APR 30 2024
WV Department of
Environmental Protection



Actual Wellpath Report

Maul Unit 2H AWP Proj: 23904'
Page 9 of 13



REFERENCE WELLPATH IDENTIFICATION

Operator	ANTERO RESOURCES CORPORATION	Well	Maul Unit 2H
Field	Ritchie	API	47-085-10487-0000
Facility	Jackson Pad	Wellbore	Maul Unit 2H AWB
Slot	Slot B		

WELLPATH DATA (255 stations)

MD [ft]	Inclination [°]	Azimuth [°]	TVD [ft]	Vert-Sect [ft]	North [ft]	East [ft]	Grid East [US ft]	Grid North [US ft]	Latitude	Longitude	Closure Dist [ft]	Closure Dir [°]	DLS ["/100ft]	Build Rate ["/100ft]	Turn Rate ["/100ft]	Comments
19866.00	89.630	161.300	6343.31	13579.58	-13699.42	1917.32	1646962.03	14253582.38	39°15'6.1279"N	80°58'36.7642"W	13832.94	172.033	0.25	-0.23	0.09	
19960.00	89.780	161.280	6343.79	13673.58	-13788.45	1947.47	1646992.17	14253493.39	39°15'5.2479"N	80°58'36.3812"W	13925.30	171.961	0.16	0.16	-0.02	
20054.00	90.000	161.280	6343.97	13767.58	-13877.48	1977.64	1647022.33	14253404.40	39°15'4.3679"N	80°58'35.9980"W	14017.69	171.890	0.23	0.23	0.00	
20149.00	89.970	161.290	6344.00	13862.58	-13967.46	2008.12	1647052.80	14253314.46	39°15'3.4785"N	80°58'35.6109"W	14111.07	171.819	0.03	-0.03	0.01	
20243.00	89.970	161.270	6344.05	13956.58	-14056.48	2038.29	1647082.95	14253225.47	39°15'2.5985"N	80°58'35.2277"W	14203.50	171.749	0.02	0.00	-0.02	
20338.00	90.000	162.050	6344.07	14051.57	-14146.66	2068.18	1647112.83	14253135.33	39°15'1.7071"N	80°58'34.8480"W	14297.04	171.683	0.82	0.00	0.82	
20432.00	90.520	161.970	6343.65	14145.56	-14236.06	2097.21	1647141.85	14253045.96	39°15'0.8234"N	80°58'34.4793"W	14389.71	171.620	0.56	0.55	-0.09	
20527.00	90.400	161.500	6342.88	14240.55	-14326.27	2126.99	1647171.61	14252955.79	39°14'59.9317"N	80°58'34.1011"W	14483.31	171.555	0.51	-0.13	-0.49	
20621.00	90.150	161.020	6342.43	14334.54	-14415.29	2157.19	1647201.80	14252866.81	39°14'58.1636"N	80°58'33.7175"W	14575.80	171.489	0.58	-0.27	-0.51	
20716.00	90.150	161.110	6342.18	14429.54	-14505.15	2188.01	1647232.61	14252776.98	39°14'57.2841"N	80°58'33.3260"W	14669.24	171.422	0.09	0.00	0.09	
20804.00	90.090	160.770	6341.83	14523.54	-14594.13	2218.32	1647262.91	14252688.04	39°14'56.4054"N	80°58'32.5527"W	14761.76	171.357	0.22	-0.20	-0.53	
20999.00	90.180	161.320	6341.30	14712.54	-14683.01	2248.89	1647293.47	14252599.19	39°14'55.5173"N	80°58'32.1608"W	14854.24	171.292	0.57	0.09	0.58	
21094.00	90.120	161.500	6341.06	14807.54	-14772.86	2279.75	1647324.32	14252509.38	39°14'54.6273"N	80°58'31.7762"W	14947.73	171.227	0.59	-0.06	0.19	
21188.00	90.340	161.170	6340.68	14901.54	-14862.91	2310.04	1647354.59	14252419.37	39°14'53.7470"N	80°58'31.3941"W	15041.35	171.166	0.20	-0.06	0.19	
21282.00	90.030	160.610	6340.37	14995.54	-15040.78	2370.89	1647415.42	14252330.35	39°14'52.8690"N	80°58'31.0032"W	15133.98	171.105	0.42	0.23	-0.35	
21376.00	90.310	161.260	6340.10	15089.53	-15129.62	2401.60	1647446.11	14252241.57	39°14'52.8690"N	80°58'30.6132"W	15226.50	171.042	0.68	-0.33	-0.60	
21470.00	90.220	161.030	6339.66	15183.53	-15218.58	2431.98	1647476.48	14252152.76	39°14'51.9908"N	80°58'30.2274"W	15319.05	170.980	0.75	0.30	0.69	
21565.00	90.220	161.160	6339.30	15278.53	-15308.45	2462.76	1647507.25	14252063.84	39°14'51.1115"N	80°58'29.8365"W	15411.67	170.921	0.26	-0.10	-0.24	
21659.00	90.250	161.350	6338.91	15372.53	-15397.47	2492.96	1647537.44	14251974.00	39°14'50.2231"N	80°58'29.4529"W	15505.29	170.861	0.14	0.00	0.14	
21753.00	90.250	161.340	6338.50	15466.53	-15486.53	2523.03	1647567.50	14251885.02	39°14'49.3433"N	80°58'29.0710"W	15597.97	170.803	0.20	0.03	0.20	
21847.00	90.220	161.140	6338.11	15560.53	-15575.53	2553.26	1647597.72	14251796.00	39°14'48.4629"N	80°58'28.6871"W	15690.70	170.747	0.01	0.00	-0.01	
21941.00	90.310	161.210	6337.68	15654.53	-15664.50	2583.59	1647628.03	14251707.03	39°14'47.5831"N	80°58'28.3018"W	15783.42	170.690	0.22	-0.03	-0.21	
22035.00	90.150	161.120	6337.30	15748.52	-15753.47	2613.94	1647658.37	14251618.09	39°14'46.7037"N	80°58'27.9164"W	15876.13	170.634	0.12	0.10	0.07	
22129.00	90.340	161.280	6336.90	15842.52	-15842.45	2644.23	1647688.65	14251529.16	39°14'45.8243"N	80°58'27.5317"W	15968.86	170.579	0.20	-0.17	-0.10	
22224.00	90.000	161.140	6336.62	15937.52	-15932.39	2674.83	1647719.24	14251440.22	39°14'44.9447"N	80°58'27.1431"W	16061.61	170.524	0.26	0.20	0.17	
22318.00	90.120	161.080	6336.52	16031.52	-16021.33	2705.26	1647749.66	14251350.32	39°14'44.0557"N	80°58'26.7566"W	16155.36	170.470	0.39	-0.36	-0.15	
22412.00	90.180	161.270	6336.27	16125.52	-16110.30	2735.60	1647779.98	14251261.41	39°14'43.1766"N	80°58'26.3714"W	16248.12	170.416	0.14	0.13	-0.06	
22506.00	90.220	161.270	6335.95	16219.52	-16199.32	2765.78	1647810.15	14251172.48	39°14'42.2971"N	80°58'25.9881"W	16340.90	170.363	0.21	0.06	0.20	
22601.00	90.150	161.120	6335.64	16314.52	-16289.25	2796.40	1647840.76	14251083.49	39°14'41.4172"N	80°58'25.5992"W	16433.73	170.311	0.04	0.04	0.00	
								14250993.60	39°14'40.5282"N	80°58'25.2592"W	16527.54	170.259	0.17	-0.07	-0.16	

RECEIVED
Office of Oil and Gas
APR 30 2024
WV Department of Environmental Protection

06/14/2024



Actual Wellpath Report

Maul Unit 2H AWP Proj: 23904'
Page 10 of 13



REFERENCE WELLPATH IDENTIFICATION	
Operator	ANTERO RESOURCES CORPORATION
Field	Ritchie
Facility	Jackson Pad
Slot	Slot B
Well	Maul Unit 2H
API	47-085-10487-0000
Wellbore	Maul Unit 2H AWB

WELLPATH DATA (255 stations) † = interpolated, ‡ = extrapolated station																
MD [ft]	Inclination [°]	Azimuth [°]	TVD [ft]	Vert Sect [ft]	North [ft]	East [ft]	Grid East [US ft]	Grid North [US ft]	Latitude	Longitude	Closure Dist [ft]	Closure Dir [°]	DLS [°/100ft]	Build Rate [°/100ft]	Turn Rate [°/100ft]	Comments
22695.00	90.220	161.090	6335.34	16408.52	-16378.18	2826.84	1647871.19	14250904.70	39°14'39.8491"N	80°58'25.2126"W	16620.34	170.207	0.08	0.07	-0.03	
22789.00	90.280	161.240	6334.93	16502.52	-16467.15	2857.19	1647901.52	14250815.77	39°14'38.7697"N	80°58'24.8272"W	16713.18	170.157	0.17	0.06	0.16	
22884.00	90.310	161.230	6334.44	16597.52	-16557.10	2887.75	1647932.07	14250725.86	39°14'37.8806"N	80°58'24.4391"W	16807.04	170.106	0.03	0.03	-0.01	
22978.00	90.550	161.550	6333.73	16691.51	-16646.18	2917.75	1647962.05	14250636.81	39°14'37.0000"N	80°58'23.0582"W	16899.96	170.058	0.43	0.26	0.34	
23073.00	90.550	161.670	6332.82	16786.50	-16736.32	2947.72	1647992.01	14250546.70	39°14'36.1090"N	80°58'23.6776"W	16993.93	170.011	0.13	0.00	0.13	
23168.00	90.460	161.290	6331.98	16881.50	-16826.40	2977.89	1648022.17	14250456.66	39°14'35.2168"N	80°58'23.2944"W	17087.88	169.964	0.41	-0.09	-0.40	
23262.00	90.460	161.110	6331.23	16975.49	-16915.38	3008.18	1648052.45	14250367.72	39°14'34.3390"N	80°58'22.9098"W	17180.78	169.916	0.19	0.00	-0.18	
23356.00	90.550	160.930	6330.40	17069.49	-17004.27	3038.75	1648083.01	14250278.87	39°14'33.4604"N	80°58'22.5215"W	17273.65	169.868	0.21	0.10	-0.19	
23451.00	90.550	160.590	6329.49	17164.48	-17093.96	3070.06	1648114.30	14250189.21	39°14'32.5738"N	80°58'22.1240"W	17367.46	169.818	0.36	0.00	-0.36	
23546.00	90.490	161.220	6328.62	17259.48	-17183.73	3101.13	1648145.37	14250099.48	39°14'31.6865"N	80°58'21.7294"W	17461.31	169.770	0.67	-0.06	0.66	
23641.00	90.490	161.340	6327.81	17354.47	-17273.70	3131.62	1648175.84	14250009.55	39°14'30.7971"N	80°58'21.3422"W	17555.27	169.724	0.13	0.00	0.13	
23735.00	90.490	161.400	6327.01	17448.47	-17362.77	3161.65	1648205.86	14249920.51	39°14'29.9167"N	80°58'20.9603"W	17648.28	169.680	0.06	0.00	0.06	
23830.00	90.490	161.170	6326.20	17543.47	-17452.74	3192.13	1648236.33	14249830.57	39°14'29.0273"N	80°58'20.5738"W	17742.26	169.635	0.24	0.00	-0.24	
23879.00	90.460	161.300	6325.79	17638.46	-17499.14	3207.89	1648262.08	14249784.20	39°14'28.5667"N	80°58'20.3737"W	17790.74	169.612	0.27	-0.06	0.27	
23904.00‡	90.460	161.300	6325.59	17617.46	-17522.81	3215.91	1648260.10	14249760.53	39°14'28.3347"N	80°58'20.2719"W	17815.47	169.600	0.00	0.00	0.00	Projected MD at TD: 23904'

RECEIVED
Office Of Oil and Gas
APR 30 2024
WV Department of
Environmental Protection

RECEIVED
Office Of Oil and Gas
APR 30 2024
WV Department of
Environmental Protection



Actual Wellpath Report

Maul Unit 2H AWP Proj: 23904'

Page 11 of 13



REFERENCE WELLPATH IDENTIFICATION

Operator	ANTERO RESOURCES CORPORATION	Well	Maul Unit 2H
Field	Ritchie	API	47-085-10487-0000
Facility	Jackson Pad	Wellbore	Maul Unit 2H AWB
Slot	Slot B		

HOLE & CASING SECTIONS - Ref Wellbore: Maul Unit 2H AWB Ref Wellpath: Maul Unit 2H AWP Proj: 23904'

String/Diameter	Start MD [ft]	End MD [ft]	Interval [ft]	Start TVD [ft]	End TVD [ft]	Start N/S [ft]	Start E/W [ft]	End N/S [ft]	End E/W [ft]
20in Conductor	30.00	130.00	100.00	30.00	130.00	0.00	0.00	-0.08	0.16
17.5in Open Hole	130.00	382.00	252.00	130.00	381.99	-0.08	0.16	-0.68	1.69
13.375in Casing Surface	30.00	362.00	332.00	30.00	361.99	0.00	0.00	-0.58	1.52
12.25in Open Hole	382.00	3486.00	3104.00	381.99	3217.09	-0.68	1.69	-513.93	-1052.27
9.625in Casing Intermediate	30.00	3456.00	3426.00	30.00	3189.94	0.00	0.00	-508.56	-1040.72
8.75in Open Hole	3456.00	6226.00	2770.00	3189.94	5645.57	-508.56	-1040.72	-1096.50	-2174.64
8.5in Open Hole	6226.00	23904.00	17678.00	5645.57	6325.59	-1096.50	-2174.64	-17522.81	3215.91
5.5in Casing Production	30.00	23884.00	23854.00	30.00	6325.75	0.00	0.00	-17503.87	3209.50

RECEIVED
Office Of Oil and Gas
APR 30 2024
WV Department of
Environmental Protection

06/14/2024



Actual Wellpath Report

Maul Unit 2H AWP Proj: 23904'
Page 12 of 13



REFERENCE WELLPATH IDENTIFICATION	
Operator	ANTERO RESOURCES CORPORATION
Field	Ritchie
Facility	Jackson Pad
Slot	Slot B
Well	Maul Unit 2H
API	47-085-10487-0000
Wellbore	Maul Unit 2H AWB

TARGETS								
Name	TVD [ft]	North [ft]	East [ft]	Grid East [US ft]	Grid North [US ft]	Latitude	Longitude	Shape
Maul Unit 2H POE Rev-3	6289.00	-1656.50	-2230.04	1642816.34	14265620.47	39°17'5.1644"N	80°59'29.4696"W	point
Maul Unit 2H BHL Rev-3	6333.00	-17530.06	3219.05	1648263.24	14249763.29	39°14'28.2631"N	80°58'20.2320"W	point
Maul Unit 2H BHL Rev-4	6333.00	-15687.67	2586.60	1647631.04	14251594.93	39°14'46.4747"N	80°58'28.2637"W	point
Maul Unit 2H LP Rev-3	6333.00	-1890.27	-2149.79	1642896.56	14265386.79	39°17'2.8538"N	80°59'28.4493"W	point
Maul Unit 2H 50' L/R Hard Line	6750.00	-9593.28	494.51	1645539.79	14257686.88	39°15'46.7153"N	80°58'54.8401"W	rectangle

2D Rectangle 16782.8 x 100.

WELLPATH COMPOSITION - Ref Wellbore: Maul Unit 2H AWB Ref Wellpath: Maul Unit 2H AWP Proj: 23904'					
Start MD [ft]	End MD [ft]	Positional Uncertainty Model	Log Name/Comment	Wellbore	Survey Date
30.00	260.00	Gyrodatta 2015 - GC+WIR+DPIPE	01 Gyrodatta MS Gyro <17-1/2"> (100'-260')	Maul Unit 2H AWB	7/4/2023
260.00	3417.00	BH NaviTrak (2019) (Axial Corr+HRGM)	02 APS EM <12-1/4"> (260')(415'-3417')	Maul Unit 2H AWB	7/4/2023
3417.00	6147.00	BH NaviTrak (2019) (Axial Corr+HRGM)	03 APS EM <8-3/4"> (3417')(3500'-6147')	Maul Unit 2H AWB	8/8/2023
6147.00	23904.00	BH AutoTrak CurveXpress (2019) (HRGM, Short spacing)	04 BH AT Curve <8-1/2"> (6147')(6271'-23879')	Maul Unit 2H AWB	8/8/2023

RECEIVED
Office Of Oil and Gas
APR 30 2024
WV Department of
Environmental Protection

06/14/2024



Actual Wellpath Report
 Maul Unit 2H AWP Proj: 23904'
 Page 13 of 13

REFERENCE WELLPATH IDENTIFICATION			
Operator	ANTERO RESOURCES CORPORATION	Well	Maul Unit 2H
Field	Ritchie	API	47-085-10487-0000
Facility	Jackson Pad	Wellbore	Maul Unit 2H AWB
Slot	Slot B		

COMMENTS
<p>Wellpath general comments API: 47-085-10487-0000 BH Job #: 111872699 Rig: H&P 519 Duration: 8/12/2023-8/16/2023 Gyrodatta MS Gyro <17-1/2"> (100'-260') APS EM <12-1/4"> (260')(415'-3417') APS EM ~8-3/4"> (3417')(3500'-6147') BH AT Curve <8-1/2"> (6147')(6271'-23879') Sycamore: 6719' MD Middlesex: 6850' MD Burkett: 7036' MD Tully: 7103' MD Marcellus POE: 7141' MD Projected MD at TD: 23904'</p>

RECEIVED
 Office Of Oil and Gas

APR 30 2024

WV Department of
 Environmental Protection

06/14/2024