



# ANTERO RESOURCES CORPORATION

Location: Ritchie County, WV  
Field: Ritchie  
Facility: Jackson Pad



Slot: Slot C  
Well: Maul Unit 3H  
Wellbore: Maul Unit 3H PWB

Grid System: NAD27/UTM Zone 17 North, US Feet  
North Reference: Grid North  
Scale: True distance  
Reference wellpath measured depths are referenced to H&P 519 (RKB)  
H&P 519 (RKB) to Mean Sea Level: 1065 feet  
Mean Sea Level to Ground level (At Slot, Slot C): -1035ft  
Other wellpath MDs are referenced to each point's default MD datum  
Created by: rchakraborty on 2023-09-05; Database: WA\_VEN\_EXAMINERUS\_PWB

### Location Information

Facility Name	Grid East (US ft)	Grid North (US ft)	Latitude	Longitude
Jackson Pad	1645046.400	391721.2374°N	39°17'21.2374"N	80°59'1.0934"W
Slot	Local E (ft)	Local N (ft)	Local E (ft)	Local N (ft)
Slot C	15.00	-0.46	1645046.940	391721.3957°N
Comment	Maul Unit 3H			80°59'1.0992"W
Mean Sea Level to Ground level (At Slot, Slot C)			30ft	
H&P 519 (RKB) to Mean Sea Level			-1035ft	
H&P 519 (RKB) to Mean Sea Level			1065ft	

### Well Profile Data

Design Comment	MD (ft)	Inc (°)	Az (°)	TVD (ft)	Local N (ft)	Local E (ft)	DLS (1/100ft)	VS (ft)
Tie On	3345.00	20.050	208.790	3152.86	-793.80	-595.60	0.99	657.65
Proj. to Bottom	3415.00	20.050	208.790	3218.82	-814.63	-607.63	0.00	573.48
Drill Out	3495.00	20.050	209.790	3293.77	-839.43	-621.16	0.00	591.57
End of 3D Arc	3636.25	23.377	216.908	3425.01	-881.87	-650.03	3.00	623.30
Curve KOP	6190.57	23.377	216.908	5769.65	-1692.28	-1259.66	0.00	1192.43
POE	6935.59	71.262	161.089	6718.00	-2189.83	-1230.38	8.00	1872.24
Landing Pt.	7169.94	90.000	161.089	6316.00	-2407.57	-1155.71	8.00	1902.43
BHL	22841.73	90.000	161.089	8316.00	-17231.69	3928.63	0.00	17574.22

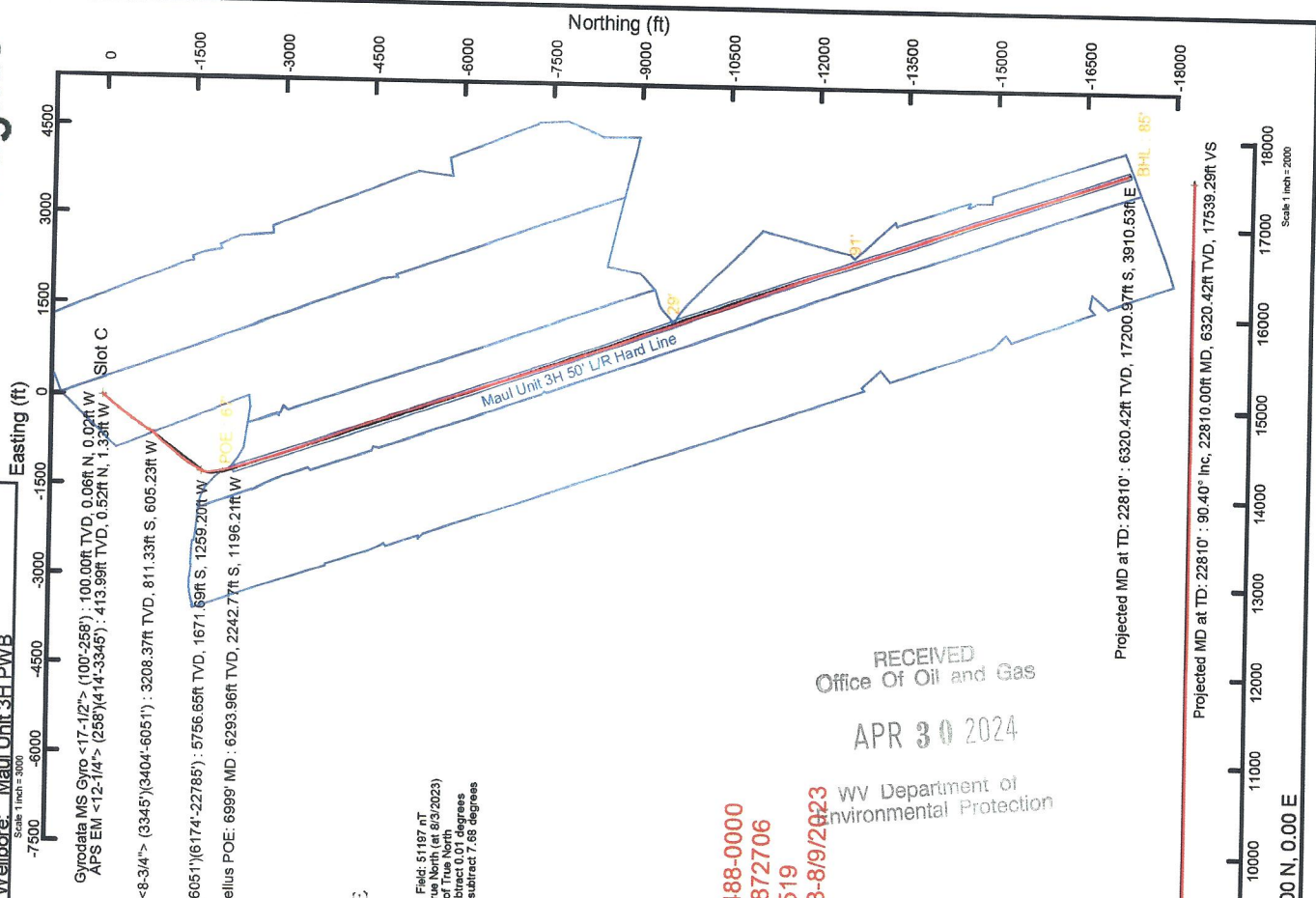
### Well Data

Slot	Well	Wellbore
Slot C	Maul Unit 3H	Maul Unit 3H AWB
Slot C	Maul Unit 3H	Maul Unit 3H PWB
		Maul Unit 3H PWP Rev-B.0

Gyrodatta MS Gyro <17-1/2"> (100°258') : 0.10° Inc, 100.00ft MD, 100.00ft TVD, -0.06ft VS  
APS EM <12-1/4"> (258)(414°-3345') : 1.00° Inc, 414.00ft MD, 413.99ft TVD, -0.92ft VS

APS EM ~8-3/4"> (3345)(3404°-6051') : 19.58° Inc, 3404.00ft MD, 3208.37ft TVD, 571.10ft VS

BH AT Curve ~8-1/2"> (6051)(6174°-22785') : 20.91° Inc, 6174.00ft MD, 5756.65ft TVD, 1172.77ft VS  
Marcellus POE: 6999 MD : 74.59° Inc, 6999.00ft MD, 6293.96ft TVD, 1733.41ft VS



User specified (HDGM) Dip: 65.86° Field: 51197 nT  
Magnetic North is 7.69 degrees West of True North (at 8/3/2023)  
To correct azimuth from True to Grid bearings  
To correct azimuth from Magnetic to Grid subtract 7.68 degrees

API: 47-085-10488-0000  
BH Job #: 111872706  
Rig: H&P 519  
Duration: 8/5/2023-8/9/2023

RECEIVED  
Office Of Oil and Gas  
APR 30 2024  
WV Department of Environmental Protection

08/14/2024



# Actual Wellpath Report

Maul Unit 3H AWP Proj: 22810'  
Page 1 of 12



## REFERENCE WELLPATH IDENTIFICATION

Operator	ANTERO RESOURCES CORPORATION	Well	Maul Unit 3H
Field	Ritchie	API	47-085-10488-0000
Facility	Jackson Pad	Wellbore	Maul Unit 3H AWB
Slot	Slot C		

## REPORT SETUP INFORMATION

Projection System	NAD27 / UTM Zone 17 North, US feet		
North Reference	Grid		
Scale	0.999600		
Convergence at slot	0.01° East		
Software System	WellArchitect® 6.0		
User	Edsaryar		
Report Generated	9/5/2023 at 4:06:09 PM		
Database	WA_MPL_EASTERNUS_Defn		

## WELLPATH LOCATION

	Local coordinates		Grid coordinates		Geographic coordinates	
	North[ft]	East[ft]	Easting[US ft]	Northing[US ft]	Latitude	Longitude
Slot Location	15.00	-0.46	1645045.94	14267261.32	39°17'21.3857"N	80°59'1.0992"W
Facility Reference Pt			1645046.40	14267246.33	39°17'21.2374"N	80°59'1.0934"W
Field Reference Pt			0.00	0.00	0°00'0.0000"	85°29'19.3013"W

## WELLPATH DATUM

Calculation method	Minimum curvature	H&P 519 (RKB) to Facility Vertical Datum	1065.00ft
Horizontal Reference Pt	Slot	H&P 519 (RKB) to Mean Sea Level	1065.00ft
Vertical Reference Pt	H&P 519 (RKB)	H&P 519 (RKB) to Ground Level at Slot (Slot C)	30.00ft
MD Reference Pt	H&P 519 (RKB)	Section Origin	N 0.00, E 0.00 ft
Field Vertical Reference	Mean Sea Level	Section Azimuth	161.07°

RECEIVED  
Office Of Oil and Gas

APR 30 2024

WV Department of  
Environmental Protection

06/14/2024



# Actual Wellpath Report

Maul Unit 3H AWP Proj: 22810'  
Page 2 of 12



## REFERENCE WELLPATH IDENTIFICATION

Operator	ANTERO RESOURCES CORPORATION	Well	Maul Unit 3H
Field	Ritchie	API	47-085-10488-0000
Facility	Jackson Pad	Wellbore	Maul Unit 3H AWB
Slot	Slot C		

## WELLPATH DATA (250 stations) † = interpolated, ‡ = extrapolated station

MD (ft)	Inclination (°)	Azimuth (°)	TVD (ft)	Vert Sect (ft)	North (ft)	East (ft)	Grid East (US ft)	Grid North (US ft)	Latitude	Longitude	Closure Dist (ft)	Closure Dir (°)	DLS (°/100ft)	Build Rate (°/100ft)	Turn Rate (°/100ft)	Comments
0.00†	0.000	339.270	0.00	0.00	0.00	0.00	1645045.94	14267261.32	39°17'21.3857"N	80°59'1.0992"W	0.00	0.000	0.00	0.00	0.00	
30.00	0.000	339.270	30.00	0.00	0.00	0.00	1645045.94	14267261.32	39°17'21.3857"N	80°59'1.0992"W	0.00	0.000	0.00	0.00	0.00	
100.00	0.100	339.270	100.00	-0.06	0.06	-0.02	1645045.92	14267261.38	39°17'21.3862"N	80°59'1.0995"W	0.06	339.270	0.14	0.14	0.00	Gyrodata MS Gyro <17-1/2"> (100'-258')
200.00	0.180	341.670	200.00	-0.31	0.29	-0.10	1645045.84	14267261.61	39°17'21.3885"N	80°59'1.1005"W	0.31	340.504	0.08	0.08	0.08	2.40
258.00	0.330	6.960	258.00	-0.55	0.54	-0.11	1645045.83	14267261.86	39°17'21.3910"N	80°59'1.1062"W	0.55	348.456	0.32	0.26	43.60	
414.00	1.000	249.970	413.99	-0.92	0.92	-1.33	1645044.61	14267261.84	39°17'21.3908"N	80°59'1.1116"W	1.43	291.276	0.76	0.43	-74.99	APS EIM <12-1/4"> (258')(414'-33445)
504.00	3.870	223.460	503.90	0.50	-1.95	-4.16	1645044.78	14267259.37	39°17'21.3663"N	80°59'1.1522"W	4.60	244.850	3.34	3.19	-29.46	
683.00	9.140	222.030	681.58	10.49	-8.12	-10.00	1645035.95	14267253.20	39°17'21.3054"N	80°59'1.2264"W	12.88	230.898	3.61	3.61	-0.11	
773.00	9.290	221.120	770.42	17.59	-28.25	-28.15	1645027.36	14267243.86	39°17'21.2130"N	80°59'1.3357"W	25.51	226.785	2.30	2.29	-1.48	
862.00	10.710	219.950	858.06	25.45	-40.00	-38.19	1645007.77	14267221.33	39°17'21.1065"N	80°59'1.4574"W	39.88	224.903	0.23	0.17	-1.01	
951.00	13.040	221.080	945.15	34.74	-53.91	-50.10	1644995.86	14267207.43	39°17'20.9904"N	80°59'1.5850"W	55.30	223.672	1.61	1.60	-1.31	
1042.00	15.960	220.140	1033.25	46.31	-71.22	-64.91	1644981.05	14267190.13	39°17'20.8529"N	80°59'1.7365"W	73.60	222.901	2.63	2.62	1.27	
1136.00	19.510	220.440	1122.76	60.95	-93.05	-83.43	1644962.54	14267168.31	39°17'20.4661"N	80°59'2.1606"W	124.98	221.880	3.78	3.78	0.32	
1230.00	22.570	220.300	1210.49	78.18	-118.76	-105.29	1644940.70	14267142.61	39°17'20.2120"N	80°59'2.4386"W	158.71	221.558	3.26	3.26	-0.15	
1325.00	24.990	220.270	1297.42	97.79	-147.98	-130.05	1644915.94	14267113.40	39°17'19.9233"N	80°59'2.7536"W	197.01	221.310	2.55	2.55	-0.03	
1419.00	25.300	218.750	1382.51	118.69	-178.80	-155.46	1644890.54	14267082.60	39°17'19.6188"N	80°59'3.0768"W	236.93	221.006	0.76	0.33	-1.62	
1514.00	25.250	216.490	1468.42	141.05	-210.92	-180.22	1644865.80	14267050.49	39°17'19.3013"N	80°59'3.3918"W	277.42	220.512	1.02	-0.05	-2.38	
1608.00	24.700	217.510	1553.63	163.28	-242.62	-204.10	1644841.92	14267018.80	39°17'18.9881"N	80°59'3.6956"W	317.05	220.072	0.74	-0.59	1.09	
1702.00	24.840	215.750	1638.98	185.55	-274.22	-227.59	1644818.44	14266987.21	39°17'18.6757"N	80°59'3.9944"W	356.36	219.691	0.80	0.15	-1.87	
1796.00	24.280	218.430	1724.48	207.39	-305.38	-251.14	1644794.90	14266956.06	39°17'18.3678"N	80°59'4.2940"W	395.39	219.433	1.33	-0.60	2.85	
1891.00	23.960	217.700	1811.18	228.54	-335.95	-275.08	1644770.97	14266925.51	39°17'18.0657"N	80°59'4.5985"W	434.20	219.311	0.46	-0.34	-0.77	
1986.00	24.340	214.940	1897.87	250.69	-367.26	-298.09	1644747.97	14266894.21	39°17'17.7563"N	80°59'4.8912"W	473.01	219.065	1.25	0.40	-2.91	
2081.00	24.900	213.970	1984.23	274.30	-399.89	-320.47	1644725.60	14266861.59	39°17'17.4338"N	80°59'5.1760"W	512.46	218.709	0.73	0.59	-1.02	
2176.00	24.310	216.520	2070.61	297.45	-432.20	-343.29	1644702.79	14266829.30	39°17'17.1145"N	80°59'5.4662"W	551.94	218.459	1.28	-0.62	2.68	
2270.00	24.160	217.500	2156.33	319.06	-463.01	-366.51	1644679.58	14266798.50	39°17'16.8100"N	80°59'5.7616"W	590.51	218.365	0.46	-0.16	1.04	
2364.00	23.660	214.610	2242.26	340.91	-493.79	-388.93	1644657.16	14266767.73	39°17'16.5058"N	80°59'6.0469"W	628.57	218.226	1.35	-0.53	-3.07	
2459.00	23.030	213.090	2329.49	363.68	-525.05	-409.91	1644636.20	14266736.48	39°17'16.1969"N	80°59'6.3137"W	666.11	217.979	0.92	-0.66	-1.60	
2553.00	23.190	211.680	2415.94	386.74	-556.21	-429.67	1644616.45	14266705.34	39°17'15.8890"N	80°59'6.5651"W	702.84	217.686	0.61	0.17	-1.50	
2648.00	22.600	216.020	2503.46	409.09	-586.89	-450.23	1644595.90	14266674.67	39°17'15.5858"N	80°59'6.8266"W	739.69	217.493	1.88	-0.62	4.57	

RECEIVED  
Office Of Oil and Gas  
APR 30 2024  
WV Department of  
Environmental Protection

06/14/2024



# Actual Wellpath Report

Maul Unit 3H AWP Proj: 22810'  
Page 3 of 12



REFERENCE WELLPATH IDENTIFICATION	
Operator	ANTERO RESOURCES CORPORATION
Field	Ritchie
Facility	Jackson Pad
Slot	Slot C
Well	Maul Unit 3H
API	47-085-10488-0000
Wellbore	Maul Unit 3H AWB

WELLPATH DATA (250 stations)																
MD [ft]	Inclination [°]	Azimuth [°]	TVD [ft]	Vert Sect [ft]	North [ft]	East [ft]	Grid East [US ft]	Grid North [US ft]	Latitude	Longitude	Closure Dist [ft]	Closure Dir [°]	DLS [°/100ft]	Build Rate [°/100ft]	Turn Rate [°/100ft]	Comments
2742.00	21.900	217.490	2590.47	429.16	-615.41	-471.52	1644574.61	14266646.16	39°17'15.3039"N	80°59'7.0975"W	775.28	217.459	0.95	-0.74	1.56	
2837.00	21.950	216.040	2678.60	449.15	-643.82	-492.75	1644553.39	14266617.75	39°17'15.0231"N	80°59'7.3675"W	810.75	217.428	0.57	0.05	-1.53	
2931.00	21.520	215.010	2765.91	469.38	-672.15	-512.97	1644533.17	14266589.44	39°17'14.7432"N	80°59'7.6248"W	845.54	217.350	0.61	-0.46	-1.10	
3026.00	21.200	216.890	2854.39	489.29	-700.16	-533.28	1644512.87	14266561.44	39°17'14.4663"N	80°59'7.8832"W	880.12	217.295	0.80	-0.34	1.98	
3120.00	20.970	215.310	2942.10	508.67	-727.48	-553.21	1644492.95	14266534.13	39°17'14.1964"N	80°59'8.1366"W	913.93	217.251	0.65	-0.24	-1.68	
3215.00	20.520	212.990	3030.94	528.87	-755.32	-572.10	1644474.07	14266506.30	39°17'13.9212"N	80°59'8.3770"W	947.53	217.141	0.99	-0.47	-2.44	
3309.00	20.210	210.710	3119.06	549.55	-783.10	-589.36	1644456.81	14266478.54	39°17'13.6467"N	80°59'8.5966"W	980.10	216.965	0.91	-0.33	-2.43	
3345.00	20.050	209.790	3152.86	557.65	-793.80	-595.60	1644450.58	14266467.84	39°17'13.5409"N	80°59'8.6760"W	992.40	216.882	0.99	-0.44	-2.56	
3404.00	19.590	207.760	3208.37	571.10	-811.33	-605.23	1644440.95	14266450.32	39°17'13.3677"N	80°59'8.7985"W	1012.20	216.722	1.41	-0.80	-3.44	APS EM <-8.3/4"> (3345)/(3404-6051')
3499.00	20.980	211.120	3297.48	592.94	-839.97	-621.44	1644424.75	14266421.68	39°17'13.0846"N	80°59'9.0046"W	1044.87	216.495	1.92	1.47	3.54	
3593.00	23.390	221.140	3384.55	613.07	-868.45	-642.42	1644403.78	14266393.22	39°17'12.8032"N	80°59'9.2716"W	1080.23	216.492	4.76	2.56	10.66	
3687.00	23.480	224.140	3470.80	630.86	-895.94	-667.74	1644378.47	14266365.74	39°17'12.5315"N	80°59'9.5936"W	1117.40	216.697	1.27	0.10	3.19	
3782.00	22.640	222.830	3558.21	648.08	-922.93	-693.35	1644352.87	14266338.76	39°17'12.2648"N	80°59'9.9194"W	1154.36	216.916	1.04	-0.88	-1.38	
3876.00	23.900	221.900	3644.56	665.92	-950.37	-718.37	1644327.86	14266311.33	39°17'11.9936"N	80°59'10.2376"W	1191.33	217.085	1.40	1.34	-0.99	
3971.00	24.980	222.440	3731.05	684.92	-979.50	-744.76	1644301.48	14266282.21	39°17'11.7058"N	80°59'10.5733"W	1230.48	217.247	1.16	1.14	0.97	
4065.00	23.790	219.420	3816.66	704.38	-1008.80	-770.19	1644276.06	14266252.93	39°17'11.4162"N	80°59'10.8968"W	1269.20	217.361	1.83	-1.27	-3.21	
4159.00	23.080	218.050	3902.91	724.37	-1037.95	-793.59	1644252.67	14266223.78	39°17'11.1281"N	80°59'11.1944"W	1306.57	217.400	0.95	-0.76	-1.46	
4254.00	23.830	218.730	3990.06	744.78	-1067.59	-817.07	1644229.20	14266194.16	39°17'10.8352"N	80°59'11.4931"W	1344.38	217.428	0.84	0.79	0.72	
4348.00	24.960	220.190	4075.67	765.12	-1097.55	-841.75	1644204.53	14266164.21	39°17'10.5391"N	80°59'11.8071"W	1383.17	217.486	1.36	1.20	1.55	
4443.00	23.840	218.770	4162.18	785.66	-1127.84	-866.71	1644179.58	14266133.94	39°17'10.2398"N	80°59'12.1245"W	1422.39	217.541	1.33	-1.18	-1.49	
4538.00	22.420	216.670	4249.52	806.19	-1157.38	-889.59	1644156.71	14266104.41	39°17'9.9479"N	80°59'12.4155"W	1459.76	217.547	1.67	-1.42	-2.21	
4632.00	22.520	219.440	4336.36	825.79	-1186.70	-911.76	1644134.55	14266076.09	39°17'9.6680"N	80°59'12.6976"W	1495.73	217.559	1.13	0.03	2.95	
4727.00	22.010	221.260	4424.28	844.18	-1213.14	-935.06	1644111.26	14266048.67	39°17'9.3969"N	80°59'12.9939"W	1531.67	217.624	0.90	-0.54	1.92	
4821.00	22.600	221.210	4511.25	861.93	-1239.96	-958.57	1644087.75	14266021.85	39°17'9.1317"N	80°59'13.2930"W	1567.28	217.706	0.63	0.63	-0.05	
4916.00	24.420	221.320	4598.36	880.76	-1268.45	-983.57	1644062.77	14265999.38	39°17'8.8502"N	80°59'13.6109"W	1605.10	217.790	1.92	1.92	0.12	
5010.00	22.520	219.260	4684.58	899.90	-1296.98	-1007.79	1644038.56	14265964.86	39°17'8.5682"N	80°59'13.9191"W	1642.50	217.848	2.20	-2.02	-2.19	
5105.00	23.240	220.190	4772.10	919.11	-1325.39	-1031.40	1644014.96	14265936.47	39°17'8.2875"N	80°59'14.2194"W	1679.41	217.890	0.85	0.76	0.98	
5199.00	23.510	220.940	4858.39	938.03	-1363.72	-1055.65	1643990.71	14265908.15	39°17'8.0076"N	80°59'14.5279"W	1716.67	217.948	0.43	0.29	0.80	
5294.00	22.240	219.420	4945.92	956.98	-1381.92	-1079.49	1643966.89	14265879.96	39°17'7.7288"N	80°59'14.8310"W	1753.57	217.995	1.47	-1.34	-1.60	
5388.00	23.160	215.840	5032.64	976.98	-1410.65	-1101.61	1643944.78	14265851.24	39°17'7.4449"N	80°59'15.1124"W	1789.82	217.987	1.77	0.98	-3.81	

RECEIVED  
Office Of Oil and Gas  
APR 30 2024  
WV Department of  
Environmental Protection

06/14/2024



# Actual Wellpath Report

Maul Unit 3H AWP Proj: 22810'  
Page 4 of 12



## REFERENCE WELLPATH IDENTIFICATION

Operator	ANTERO RESOURCES CORPORATION	Well	Maul Unit 3H
Field	Ritchie	API	47-085-10488-0000
Facility	Jackson Pad	Wellbore	Maul Unit 3H AWB
Slot	Slot C		

## WELLPATH DATA (250 stations)

† = interpolated, ‡ = extrapolated station

MD (ft)	Inclination (°)	Azimuth (°)	TVD (ft)	Vert. Sect (ft)	North (ft)	East (ft)	Grid East (US ft)	Grid North (US ft)	Latitude	Longitude	Closure Dist (ft)	Closure Dir (°)	DLS (°/100ft)	Buid Rate (°/100ft)	Turn Rate (°/100ft)	Comments
5483.00	24.390	213.760	5119.58	999.65	-1442.10	-1123.45	1643922.95	14265819.80	39°17'7.1341"N	80°59'15.3902"W	1828.06	217.920	1.57	1.29	-2.19	
5578.00	22.840	212.420	5206.62	1023.05	-1473.98	-1144.23	1643902.17	14265787.94	39°17'6.8191"N	80°59'15.6546"W	1865.98	217.822	1.73	-1.63	-1.41	
5672.00	23.590	210.710	5293.01	1046.63	-1505.55	-1163.62	1643882.79	14265756.38	39°17'6.5070"N	80°59'15.9012"W	1902.81	217.700	1.07	0.80	-1.82	
5766.00	25.250	207.090	5378.60	1072.73	-1539.57	-1182.36	1643864.06	14265722.37	39°17'6.1708"N	80°59'16.1396"W	1941.20	217.523	2.38	1.77	-3.85	
5861.00	23.460	205.950	5465.14	1100.21	-1574.62	-1199.86	1643846.56	14265687.33	39°17'5.8244"N	80°59'16.3623"W	1979.67	217.307	1.95	-1.88	-1.20	
5955.00	21.480	209.920	5552.01	1124.79	-1606.36	-1216.64	1643829.79	14265655.60	39°17'5.5107"N	80°59'16.5757"W	2015.10	217.140	2.65	-2.11	4.22	
6051.00	20.910	213.090	5756.65	1172.77	-1671.69	-1259.20	1643787.25	14265590.31	39°17'5.2228"N	80°59'16.8088"W	2049.39	217.057	1.97	-0.95	4.80	
6268.00	27.150	199.420	5842.53	1199.96	-1706.03	-1275.51	1643770.94	14265555.98	39°17'4.8651"N	80°59'17.1170"W	2092.87	216.989	0.50	0.28	-1.17	BH AT Curve -8-1/2" > (6051) \6174-22785)
6363.00	32.240	180.060	5925.22	1241.05	-1751.94	-1282.77	1643763.69	14265510.08	39°17'4.5719"N	80°59'17.3246"W	2130.13	216.784	8.86	6.64	-14.54	
6457.00	37.790	174.730	6002.19	1292.79	-1805.75	-1285.70	1643766.31	14265456.29	39°17'3.5401"N	80°59'17.4169"W	2213.48	215.334	6.74	5.90	-20.38	
6535.00†	42.506	172.343	6061.80	1341.89	-1855.70	-1274.44	1643772.01	14265406.37	39°17'3.0464"N	80°59'17.3837"W	2251.18	214.480	6.36	6.05	-3.06	Sycamore: 6535' MD
6652.00	51.850	170.450	6137.44	1421.66	-1935.81	-1262.12	1643773.61	14265394.89	39°17'2.9329"N	80°59'17.2909"W	2259.76	214.282	6.36	6.08	-2.72	
6646.00	53.867	170.658	6151.93	1440.53	-1954.68	-1268.98	1643787.46	14265307.43	39°17'2.2546"N	80°59'17.1547"W	2310.91	213.104	8.91	8.84	-1.52	
6670.00†	59.750	171.210	6190.24	1498.22	-2012.50	-1249.76	1643796.68	14265249.63	39°17'2.0681"N	80°59'17.1148"W	2325.04	212.785	8.43	8.40	0.87	Middlesex: 6670' MD
6740.00	63.910	167.160	6234.62	1580.22	-2093.84	-1234.17	1643812.27	14265168.32	39°17'1.4966"N	80°59'16.9977"W	2368.98	211.840	8.43	8.40	0.79	
6834.00	66.822	166.164	6255.87	1626.35	-2138.94	-1223.47	1643822.96	14265123.24	39°17'0.6926"N	80°59'16.7994"W	2430.50	210.516	5.83	4.43	-4.31	
6895.00†	69.340	165.340	6272.30	1667.03	-2178.50	-1213.42	1643833.01	14265083.69	39°16'59.8558"N	80°59'16.6635"W	2464.13	209.769	5.98	5.71	-1.95	Burkett: 6885' MD
6959.00†	71.590	165.052	6282.33	1695.23	-2205.84	-1206.20	1643840.23	14265056.37	39°16'59.5856"N	80°59'16.4439"W	2493.65	209.118	5.98	5.72	-1.87	
6999.00†	74.590	164.679	6293.96	1733.41	-2242.77	-1196.21	1643850.21	14265019.45	39°16'59.2205"N	80°59'16.3169"W	2514.09	208.671	7.55	7.50	-0.96	Tully: 6959' MD
7023.00	76.390	164.460	6299.98	1756.60	-2265.17	-1190.02	1643856.39	14264997.06	39°16'58.9992"N	80°59'16.2383"W	2541.84	208.074	7.55	7.50	-0.93	Marcellus POE: 6999' MD
7118.00	82.870	163.150	6317.07	1849.89	-2354.86	-1163.96	1643909.05	14264817.61	39°16'58.1127"N	80°59'15.9071"W	2588.74	207.716	7.55	7.50	-0.91	
7212.00	88.490	163.840	6324.15	1943.50	-2444.69	-1137.35	1643909.05	14264728.04	39°16'56.1127"N	80°59'15.5688"W	2696.31	204.949	6.95	6.82	-1.38	
7306.00	89.450	161.080	6325.84	2037.45	-2534.30	-1109.03	1643937.36	14264638.04	39°16'56.3391"N	80°59'15.2087"W	2766.33	203.635	6.02	5.98	0.73	
7401.00	88.140	161.740	6327.00	2132.44	-2624.33	-1078.74	1643967.63	14264548.89	39°16'55.4492"N	80°59'14.8238"W	2837.40	202.345	0.77	-0.33	-2.94	
7495.00	89.080	161.470	6328.48	2226.42	-2713.52	-1049.08	1643997.28	14264463.46	39°16'54.5676"N	80°59'14.4468"W	2909.25	201.137	0.29	-0.06	-0.29	
7585.00	89.720	162.010	6329.41	2316.41	-2798.98	-1020.89	1644025.46	14264405.46	39°16'53.7229"N	80°59'14.0883"W	2979.35	200.039	0.93	0.71	0.60	
7682.00	89.140	160.540	6330.37	2413.40	-2890.84	-989.75	1644056.59	14264371.64	39°16'52.8149"N	80°59'13.6925"W	3055.58	198.900	1.63	-0.60	-1.52	
7776.00	89.380	160.960	6331.59	2507.39	-2979.58	-958.76	1644087.56	14264282.94	39°16'51.9379"N	80°59'13.2986"W	3130.03	197.837	0.51	0.26	0.45	

RECEIVED  
Office Of Oil and Gas  
APR 30 2024  
WV Department of  
Environmental Protection

06/14/2024



# Actual Wellpath Report

Maul Unit 3H AWP Proj: 22810'  
Page 5 of 12



## REFERENCE WELLPATH IDENTIFICATION

Operator	ANTERO RESOURCES CORPORATION	Well	Maul Unit 3H
Field	Ritchie	API	47-085-10488-0000
Facility	Jackson Pad	Wellbore	Maul Unit 3H AWB
Slot	Slot C		

## WELLPATH DATA (250 stations)

MD [ft]	Inclination [°]	Azimuth [°]	TVD [ft]	Vert Sect [ft]	North [ft]	East [ft]	Grid East [US ft]	Grid North [US ft]	Latitude	Longitude	Closure Dist [ft]	Closure Dir [°]	DLS ["/100ft]	Build Rate ["/100ft]	Turn Rate ["/100ft]	Comments
7871.00	89.820	160.590	6332.25	2602.39	-3069.28	-927.48	1644118.83	14264193.28	39°16'51.0512"N	80°59'12.9010"W	3206.35	196.814	0.61	0.46	-0.39	
7965.00	90.180	161.320	6332.25	2696.39	-3158.13	-896.81	1644149.49	14264104.46	39°16'50.1730"N	80°59'12.5111"W	3282.99	195.853	0.87	0.38	0.78	
8060.00	91.200	160.630	6331.11	2791.38	-3247.93	-865.84	1644180.45	14264014.69	39°16'49.2854"N	80°59'12.1175"W	3361.36	194.927	1.30	1.07	-0.73	
8154.00	90.490	159.170	6329.72	2885.35	-3336.19	-833.54	1644212.73	14263926.47	39°16'48.4130"N	80°59'11.7069"W	3438.75	194.028	1.73	-0.78	-1.55	
8248.00	90.830	159.110	6328.64	2979.29	-3424.03	-800.07	1644246.19	14263838.67	39°16'47.5448"N	80°59'11.2814"W	3516.26	193.152	0.37	0.36	-0.06	
8343.00	89.290	159.640	6328.54	3074.24	-3512.94	-766.61	1644279.64	14263749.80	39°16'46.6660"N	80°59'10.8561"W	3595.61	192.310	1.71	-1.62	0.56	
8437.00	89.600	160.190	6329.45	3168.22	-3601.21	-734.33	1644311.90	14263661.55	39°16'45.7934"N	80°59'10.4457"W	3675.32	191.525	0.67	0.33	0.59	
8531.00	89.720	160.800	6330.01	3262.21	-3689.82	-702.95	1644343.28	14263572.99	39°16'44.9176"N	80°59'10.0468"W	3756.18	190.786	0.66	0.13	0.65	
8626.00	89.570	160.470	6330.59	3357.21	-3779.44	-671.45	1644374.76	14263483.40	39°16'44.0318"N	80°59'9.6464"W	3838.62	190.074	0.38	-0.16	-0.35	
8720.00	90.620	160.060	6330.44	3451.20	-3867.92	-639.71	1644406.49	14263394.96	39°16'43.1572"N	80°59'9.2430"W	3920.46	189.391	1.20	1.12	-0.44	
8814.00	90.340	160.690	6329.65	3545.19	-3956.45	-608.14	1644438.05	14263306.46	39°16'42.2821"N	80°59'8.8417"W	4002.92	188.738	0.73	-0.30	0.67	
8909.00	89.750	159.530	6329.58	3640.17	-4045.79	-575.82	1644470.36	14263217.16	39°16'41.3991"N	80°59'8.4309"W	4086.56	188.100	1.37	-0.62	-1.22	
9003.00	89.880	158.510	6329.88	3734.11	-4133.55	-542.16	1644504.00	14263129.43	39°16'40.5316"N	80°59'7.9919"W	4168.96	187.472	1.09	0.14	-1.09	
9097.00	89.260	158.150	6330.28	3827.95	-4220.58	-506.65	1644539.50	14263042.44	39°16'39.6714"N	80°59'7.5516"W	4250.88	186.845	1.53	-0.27	-1.51	
9192.00	89.320	158.860	6332.37	3922.77	-4308.42	-470.48	1644575.65	14262954.63	39°16'37.9387"N	80°59'6.8541"W	4334.03	186.232	1.18	-0.39	1.12	
9286.00	90.400	161.170	6333.10	4016.67	-4395.88	-436.04	1644610.08	14262867.21	39°16'36.1747"N	80°59'5.2458"W	4417.45	185.665	0.76	0.06	0.76	
9380.00	90.180	162.020	6333.14	4205.64	-4574.35	-403.91	1644642.19	14262778.92	39°16'35.2910"N	80°59'5.8646"W	4502.36	185.147	2.51	0.49	2.46	
9475.00	90.400	161.990	6332.66	4299.63	-4663.75	-344.88	1644701.20	14262688.81	39°16'34.4074"N	80°59'5.4955"W	4589.60	184.673	0.99	0.42	0.89	
9569.00	90.180	162.140	6332.70	4488.60	-4843.52	-286.56	1644730.25	14262599.45	39°16'33.5141"N	80°59'5.1261"W	4676.48	184.229	0.24	0.23	-0.03	
9663.00	89.750	161.990	6332.54	4393.61	-4753.14	-315.82	1644759.49	14262510.09	39°16'32.6290"N	80°59'4.7543"W	4763.62	183.801	0.69	-0.69	0.00	
9758.00	90.060	162.430	6332.42	4582.58	-4933.07	-257.96	1644788.08	14262424.65	39°16'31.7431"N	80°59'4.3908"W	4851.99	183.386	0.36	0.33	0.16	
9852.00	90.280	162.480	6332.01	4676.55	-5022.69	-229.62	1644816.41	14262330.24	39°16'30.8486"N	80°59'4.0306"W	4939.81	182.993	0.39	0.23	0.31	
9946.00	89.750	162.080	6332.03	4771.53	-5113.18	-200.71	1644845.31	14262240.65	39°16'29.9562"N	80°59'3.6632"W	5027.94	182.618	0.08	-0.06	0.05	
10041.00	90.710	161.670	6331.65	4866.52	-5203.47	-171.16	1644874.85	14262150.19	39°16'29.0740"N	80°59'3.2876"W	5117.12	182.248	0.65	-0.49	-0.42	
10136.00	90.890	161.790	6330.34	4960.50	-5292.72	-141.69	1644904.31	14262069.94	39°16'28.1902"N	80°59'2.9131"W	5206.28	181.884	1.10	1.01	-0.43	
10230.00	91.290	162.360	6328.55	5054.47	-5382.14	-112.76	1644933.22	14261970.73	39°16'27.2933"N	80°59'2.5455"W	5294.62	181.533	0.23	0.19	0.13	
10324.00	91.080	163.280	6326.59	5149.40	-5472.88	-84.71	1644961.26	14261881.34	39°16'26.4071"N	80°59'2.1890"W	5383.32	181.200	0.74	0.43	0.61	
10419.00	92.250	161.920	6323.85	5243.33	-5562.54	-56.61	1644989.35	14261790.64	39°16'25.5146"N	80°59'1.8319"W	5473.54	180.887	0.99	-0.22	0.97	
10513.00	89.820	161.950	6322.14	5338.29	-5652.83	-27.16	1645018.79	14261701.02	39°16'25.5146"N	80°59'1.4578"W	5562.83	180.583	1.91	1.24	-1.45	
10608.00								14261610.76			5652.90	180.275	2.56	-2.56	0.03	

RECEIVED  
Office Of Oil and Gas  
APR 30 2024  
WV Department of  
Environmental Protection

06/14/2024



# Actual Wellpath Report

Maul Unit 3H AWP Proj: 22810'  
Page 6 of 12



REFERENCE WELLPATH IDENTIFICATION	
Operator	ANTERO RESOURCES CORPORATION
Field	Ritchie
Facility	Jackson Pad
Slot	Slot C
Well	Maul Unit 3H
API	47-085-10488-0000
Wellbore	Maul Unit 3H AWB

WELLPATH DATA (250 stations)																
MD (ft)	Inclination (°)	Azimuth (°)	TVD (ft)	Vert Sect (ft)	North (ft)	East (ft)	Grid East (US ft)	Grid North (US ft)	Latitude	Longitude	Closure Dist (ft)	Closure Dir (°)	D.L.S (°/100ft)	Build Rate (°/100ft)	Turn Rate (°/100ft)	Comments
10702.00	88.740	161.610	6323.32	5432.28	-5742.11	2.23	1645048.17	14261521.52	39°16'24.6321"N	80°59'1.0841"W	5742.11	179.978	1.20	-1.15	-0.36	
10797.00	89.080	162.000	6325.13	5527.25	-5632.35	31.88	1645077.81	14261431.32	39°16'23.7402"N	80°59'0.7072"W	5832.43	179.687	0.54	0.36	0.41	
10891.00	88.950	162.230	6326.74	5621.22	-5921.79	60.75	1645106.66	14261341.91	39°16'22.8561"N	80°59'0.3404"W	5922.10	179.412	0.28	-0.14	0.24	
10985.00	88.860	161.980	6328.54	5715.19	-6011.23	89.63	1645135.53	14261252.51	39°16'21.9721"N	80°58'59.9734"W	6011.89	179.146	0.28	-0.10	-0.27	
11079.00	89.230	161.590	6330.11	5809.17	-6100.50	119.01	1645164.90	14261163.27	39°16'21.0897"N	80°58'59.6001"W	6101.66	178.862	0.47	0.39	-0.41	
11174.00	89.660	161.710	6331.03	5904.16	-6190.67	148.91	1645194.79	14261073.14	39°16'20.1964"N	80°58'59.2200"W	6192.46	178.622	0.57	0.45	0.13	
11268.00	89.750	162.280	6331.51	5996.14	-6280.06	177.97	1645223.84	14260983.78	39°16'19.3148"N	80°58'58.8508"W	6282.58	178.377	0.61	0.10	0.61	
11362.00	89.720	162.040	6331.94	6092.13	-6369.54	206.76	1645252.62	14260894.34	39°16'18.4304"N	80°58'58.4848"W	6372.90	178.141	0.26	-0.03	-0.26	
11456.00	89.720	161.990	6332.40	6186.11	-6458.95	235.79	1645281.63	14260804.97	39°16'17.5467"N	80°58'58.1160"W	6463.25	177.909	0.05	0.00	-0.05	
11551.00	89.820	161.780	6332.79	6281.10	-6549.24	265.33	1645311.16	14260714.71	39°16'16.6542"N	80°58'57.7406"W	6554.61	177.660	0.24	0.11	-0.22	
11645.00	89.690	162.120	6333.19	6375.09	-6638.61	294.45	1645340.27	14260625.38	39°16'15.7708"N	80°58'57.3705"W	6645.14	177.460	0.39	-0.14	0.36	
11739.00	89.750	162.350	6333.65	6469.07	-6728.13	323.13	1645368.94	14260535.90	39°16'14.8860"N	80°58'57.0061"W	6735.88	177.250	0.25	0.06	0.24	
11834.00	89.720	162.250	6334.09	6564.05	-6818.63	352.01	1645397.81	14260445.43	39°16'13.9914"N	80°58'56.6390"W	6827.71	177.045	0.11	-0.03	-0.11	
11929.00	89.630	161.970	6334.63	6659.03	-6909.04	381.20	1645426.98	14260355.06	39°16'13.0976"N	80°58'56.2682"W	6919.54	176.842	0.31	-0.09	-0.29	
12024.00	90.740	162.090	6334.32	6754.01	-6999.40	410.51	1645456.28	14260264.73	39°16'12.2046"N	80°58'55.8958"W	7011.43	176.644	1.18	1.17	0.13	
12118.00	91.140	163.140	6334.22	6848.01	-7088.60	440.14	1645485.90	14260175.57	39°16'11.3229"N	80°58'55.5192"W	7102.25	176.447	1.75	-1.45	-0.99	
12212.00	90.400	160.920	6333.79	6941.98	-7178.07	468.95	1645514.70	14260086.14	39°16'10.4386"N	80°58'55.1631"W	7193.37	176.262	2.82	1.87	2.11	
12307.00	90.710	161.120	6333.52	7036.95	-7268.42	498.25	1645543.99	14259995.82	39°16'9.5455"N	80°58'54.7808"W	7285.48	176.078	2.46	-0.78	-2.34	
12401.00	90.710	161.030	6329.40	7130.95	-7357.31	528.82	1645574.55	14259906.97	39°16'8.6669"N	80°58'54.0068"W	7376.29	175.889	0.39	0.33	0.21	
12495.00	90.710	161.220	6330.44	7224.94	-7446.27	559.16	1645604.88	14259818.05	39°16'7.7876"N	80°58'53.6163"W	7467.23	175.706	0.11	0.00	0.11	
12590.00	90.550	161.030	6329.40	7319.93	-7536.15	589.89	1645635.59	14259728.20	39°16'6.8991"N	80°58'53.2310"W	7559.21	175.524	0.26	-0.17	-0.20	
12684.00	90.710	161.330	6328.36	7413.93	-7625.12	620.21	1645665.90	14259639.26	39°16'6.0197"N	80°58'52.8451"W	7650.30	175.350	0.36	0.17	0.32	
12778.00	89.940	160.970	6327.83	7507.93	-7714.08	650.58	1645696.26	14259550.34	39°16'5.1404"N	80°58'52.4523"W	7741.46	175.179	0.90	-0.82	-0.38	
12873.00	90.030	161.060	6327.85	7602.93	-7803.91	681.49	1645727.15	14259460.55	39°16'4.2625"N	80°58'52.0809"W	7833.61	175.009	0.13	0.09	0.09	
12967.00	90.460	162.700	6327.45	7696.91	-7893.25	710.72	1645756.38	14259371.25	39°16'3.3695"N	80°58'51.7119"W	7925.18	174.855	1.80	0.46	1.74	
13061.00	90.030	161.310	6327.05	7790.90	-7982.64	739.76	1645785.40	14259281.88	39°16'2.4858"N	80°58'51.3163"W	8016.85	174.705	1.55	-0.46	-1.48	
13156.00	88.980	160.430	6327.87	7885.89	-8072.39	770.89	1645816.52	14259192.17	39°16'1.5987"N	80°58'50.9284"W	8109.12	174.545	1.44	-1.11	-0.93	
13250.00	90.520	161.660	6328.28	7979.88	-8161.29	801.42	1645847.04	14259103.31	39°16'0.7200"N	80°58'50.5376"W	8200.55	174.392	2.10	1.64	1.31	
13345.00	89.780	160.560	6328.03	8074.88	-8251.17	832.18	1645877.78	14259013.47	39°15'59.8316"N	80°58'50.1493"W	8293.03	174.241	1.40	-0.78	-1.16	
13439.00	89.910	161.500	6328.29	8168.88	-8340.07	862.74	1645908.33	14258924.61	39°15'58.9529"N	80°58'50.1493"W	8384.57	174.094	1.01	0.14	1.00	

RECEIVED  
Office Of Oil and Gas  
APR 30 2024  
WV Department of  
Environmental Protection

06/14/2024



# Actual Wellpath Report

Maul Unit 3H AWP Proj: 22810'

Page 7 of 12



## REFERENCE WELLPATH IDENTIFICATION

Operator	ANTERO RESOURCES CORPORATION	Well	Maul Unit 3H
Field	Ritchie	API	47-085-10488-0000
Facility	Jackson Pad	Wellbore	Maul Unit 3H AWB
Slot	Slot C		

## WELLPATH DATA (250 stations)

MD (ft)	Inclination (°)	Azimuth (°)	TVD (ft)	Vert Sect (ft)	North (ft)	East (ft)	Grid East (US ft)	Grid North (US ft)	Latitude	Longitude	Closure Dist (ft)	Closure Dir (°)	DLS (°/100ft)	Build Rate (°/100ft)	Turn Rate (°/100ft)	Comments
13534.00	89.820	161.270	6328.51	8263.88	-8430.09	893.06	1645938.64	14258834.61	39°15'58.0630"N	80°58'49.7640"W	8477.27	173.953	0.26	-0.09	-0.24	
13628.00	89.820	161.090	6328.81	8357.88	-8519.07	923.38	1645968.95	14258745.68	39°15'57.1835"N	80°58'49.3787"W	8568.97	173.814	0.19	0.00	-0.19	
13723.00	89.820	161.170	6329.11	8452.88	-8608.96	954.11	1645999.67	14258655.82	39°15'56.2950"N	80°58'48.9883"W	8661.67	173.676	0.08	0.00	0.08	
13818.00	90.000	161.180	6329.25	8547.88	-8698.88	984.76	1646030.31	14258565.94	39°15'55.4062"N	80°58'48.5988"W	8754.44	173.541	0.19	0.19	0.01	
13912.00	89.780	161.150	6329.43	8641.88	-8787.85	1015.11	1646060.64	14258477.01	39°15'54.5268"N	80°58'48.2132"W	8846.28	173.411	0.24	-0.23	-0.03	
14006.00	89.850	161.100	6329.74	8735.88	-8876.79	1045.52	1646091.04	14258388.10	39°15'53.6476"N	80°58'47.8269"W	8938.15	173.283	0.09	0.07	-0.05	
14100.00	89.820	161.160	6330.01	8829.88	-8965.74	1075.92	1646121.43	14258299.18	39°15'52.7684"N	80°58'47.4406"W	9030.07	173.157	0.07	-0.03	0.06	
14194.00	89.690	160.750	6330.41	8923.87	-9054.59	1106.59	1646152.09	14258210.37	39°15'51.8902"N	80°58'47.0509"W	9121.96	173.032	0.46	-0.14	-0.44	
14288.00	89.860	161.190	6330.76	9017.87	-9143.45	1137.24	1646182.73	14258121.54	39°15'51.0118"N	80°58'46.6614"W	9213.91	172.910	0.51	0.20	0.47	
14383.00	89.720	160.950	6331.10	9112.87	-9233.32	1168.06	1646213.53	14258031.72	39°15'50.1236"N	80°58'46.2699"W	9306.91	172.790	0.30	-0.17	-0.25	
14477.00	90.000	162.150	6331.32	9206.87	-9322.48	1226.97	1646243.27	14257942.58	39°15'49.2422"N	80°58'45.8919"W	9399.12	172.678	1.31	0.30	1.28	
14572.00	89.820	162.100	6331.47	9301.85	-9412.90	1296.97	1646272.42	14257852.21	39°15'48.3485"N	80°58'45.5215"W	9492.53	172.573	0.20	-0.19	-0.05	
14666.00	90.000	162.300	6331.62	9395.83	-9502.40	1255.71	1646301.14	14257762.74	39°15'47.4638"N	80°58'45.1564"W	9585.01	172.472	0.29	0.19	0.21	
14761.00	90.120	162.470	6331.52	9490.81	-9592.94	1284.45	1646329.88	14257672.23	39°15'46.5688"N	80°58'44.7911"W	9678.55	172.374	0.22	0.13	0.18	
14856.00	90.090	162.100	6331.35	9585.79	-9683.44	1313.36	1646358.77	14257581.78	39°15'45.6743"N	80°58'44.4239"W	9772.10	172.276	0.39	-0.03	-0.39	
14950.00	89.940	161.640	6331.32	9679.78	-9772.77	1342.61	1646388.01	14257492.48	39°15'44.7913"N	80°58'44.0523"W	9864.56	172.178	0.51	-0.16	-0.49	
15045.00	89.760	161.370	6331.56	9774.77	-9862.86	1372.75	1646418.14	14257402.42	39°15'43.9008"N	80°58'43.6694"W	9957.94	172.076	0.33	-0.17	-0.28	
15139.00	90.150	161.850	6331.61	9868.77	-9952.06	1402.40	1646447.78	14257313.26	39°15'43.0191"N	80°58'43.2927"W	10050.39	171.979	0.64	0.39	0.51	
15234.00	90.090	162.010	6331.41	9963.76	-10042.38	1431.87	1646477.23	14257222.98	39°15'42.1264"N	80°58'42.9183"W	10143.94	171.885	0.18	-0.06	0.17	
15328.00	90.250	161.220	6331.14	10057.75	-10131.58	1461.52	1646506.87	14257133.82	39°15'41.2447"N	80°58'42.5417"W	10236.45	171.791	0.86	0.17	-0.84	
15423.00	90.150	160.900	6330.80	10152.75	-10221.43	1492.35	1646537.89	14257044.00	39°15'40.3565"N	80°58'42.1499"W	10329.80	171.693	0.35	-0.11	-0.34	
15517.00	90.120	161.090	6330.58	10246.75	-10310.31	1522.96	1646568.29	14256955.16	39°15'39.4780"N	80°58'41.7610"W	10422.18	171.597	0.20	-0.03	0.20	
15612.00	90.090	161.320	6330.41	10341.75	-10400.24	1553.57	1646598.89	14256865.26	39°15'38.5890"N	80°58'41.3722"W	10515.64	171.504	0.24	-0.03	0.24	
15706.00	89.880	160.990	6330.43	10435.75	-10489.20	1583.93	1646629.24	14256776.33	39°15'37.7097"N	80°58'40.9864"W	10608.12	171.413	0.42	-0.22	-0.35	
15801.00	90.120	161.390	6330.43	10530.75	-10579.13	1614.56	1646659.85	14256686.44	39°15'36.8208"N	80°58'40.5973"W	10701.63	171.323	0.49	0.25	0.42	
15895.00	90.060	160.050	6330.29	10624.75	-10667.86	1645.00	1646690.88	14256598.43	39°15'35.9438"N	80°58'40.2030"W	10794.03	171.231	1.43	-0.06	-1.43	
15990.00	90.120	160.250	6330.14	10719.73	-10757.51	1677.86	1646723.12	14256508.43	39°15'35.0605"N	80°58'39.7932"W	10887.28	171.135	0.22	0.06	0.21	
16084.00	90.120	160.010	6329.94	10813.72	-10845.62	1709.81	1646755.06	14256420.06	39°15'34.1867"N	80°58'39.3873"W	10979.56	171.041	0.26	0.00	-0.26	
16179.00	90.000	160.020	6329.84	10908.70	-10934.89	1742.28	1646787.52	14256330.82	39°15'33.3042"N	80°58'38.9748"W	11072.82	170.947	0.13	-0.13	0.01	
16273.00	90.250	160.450	6329.63	11002.69	-11023.36	1774.06	1646819.29	14256242.39	39°15'32.4298"N	80°58'38.5710"W	11165.20	170.857	0.53	0.27	0.46	

RECEIVED  
Office Of Oil and Gas

APR 30 2024

WV Department of  
Environmental Protection

RECEIVED  
Office Of Oil and Gas

APR 30 2024

WV Department of  
Environmental Protection

06/14/2024





# Actual Wellpath Report

Maul Unit 3H AWP Proj: 22810'  
Page 8 of 12



## REFERENCE WELLPATH IDENTIFICATION

Operator	ANTERO RESOURCES CORPORATION	Well	Maul Unit 3H
Field	Ritchie	API	47-085-10488-0000
Facility	Jackson Pad	Wellbore	Maul Unit 3H AWB
Slot	Slot C		

## WELLPATH DATA (250 stations)

ID	Inclination [°]	Azimuth [°]	TVD [ft]	Vert Sect [ft]	North [ft]	East [ft]	Grid East [US ft]	Grid North [US ft]	Latitude	Longitude	Closure Dist [ft]	Closure Dir [°]	DLS [°/100ft]	Build Rate [°/100ft]	Turn Rate [°/100ft]	Comments
16367.00	89.940	159.370	6329.48	11096.67	-11111.64	1806.35	1646851.57	14256154.15	39°15'31.5572"N	80°58'38.1608"W	11257.50	170.767	1.20	-0.33	-1.15	
16462.00	89.970	159.650	6329.55	11191.64	-11200.62	1839.61	1646884.81	14256065.20	39°15'30.6775"N	80°58'37.7383"W	11350.69	170.673	0.30	0.03	0.29	
16556.00	89.690	159.970	6329.83	11285.61	-11288.85	1872.05	1646977.24	14255977.01	39°15'29.8055"N	80°58'37.3261"W	11443.02	170.584	0.45	-0.30	0.34	
16650.00	89.940	160.090	6330.14	11379.60	-11377.20	1904.15	1646949.33	14255888.70	39°15'28.9322"N	80°58'36.9183"W	11535.44	170.499	0.30	0.27	0.13	
16745.00	89.600	160.780	6330.52	11474.59	-11466.71	1935.96	1646981.13	14255799.22	39°15'28.0474"N	80°58'36.5142"W	11628.99	170.417	0.81	-0.36	0.73	
16839.00	89.970	159.510	6330.87	11568.58	-11555.12	1967.89	1647013.04	14255710.85	39°15'27.1735"N	80°58'36.1066"W	11721.49	170.335	1.41	0.39	-1.35	
16934.00	89.480	159.520	6331.33	11663.54	-11644.11	2001.14	1647046.27	14255621.89	39°15'26.2938"N	80°58'35.6863"W	11814.81	170.249	0.52	-0.52	0.01	
17028.00	89.600	159.380	6332.08	11757.50	-11732.13	2034.13	1647079.25	14255533.91	39°15'25.4238"N	80°58'35.2671"W	11907.16	170.164	0.20	0.13	-0.15	
17122.00	89.480	159.580	6332.83	11851.46	-11820.16	2067.08	1647112.19	14255445.91	39°15'24.5536"N	80°58'34.8485"W	11999.54	170.081	0.25	-0.13	0.21	
17217.00	90.490	160.200	6332.86	11946.44	-11909.36	2099.74	1647144.84	14255356.74	39°15'23.6718"N	80°58'34.4336"W	12093.05	170.001	1.25	1.06	0.65	
17311.00	89.570	159.710	6332.81	12040.42	-11997.67	2131.96	1647177.04	14255268.47	39°15'22.7990"N	80°58'34.0243"W	12185.62	169.924	1.11	-0.98	-0.52	
17406.00	89.720	160.410	6333.40	12135.40	-12086.97	2164.36	1647209.43	14255179.21	39°15'21.9162"N	80°58'33.6127"W	12279.22	169.848	0.75	0.16	0.74	
17500.00	89.600	160.710	6333.96	12229.40	-12175.61	2195.64	1647240.70	14255090.60	39°15'21.0401"N	80°58'33.2153"W	12372.00	169.778	0.34	-0.13	0.32	
17595.00	89.820	161.000	6334.44	12324.39	-12265.36	2226.80	1647271.84	14255000.89	39°15'20.1530"N	80°58'32.8196"W	12465.86	169.710	0.38	0.23	0.31	
17689.00	89.720	161.450	6334.82	12418.39	-12354.37	2257.05	1647302.09	14254911.93	39°15'19.2733"N	80°58'32.4353"W	12558.83	169.647	0.49	-0.11	0.48	
17784.00	89.970	161.100	6335.43	12507.39	-12444.27	2287.70	1647332.72	14254822.05	39°15'18.3844"N	80°58'31.6574"W	12652.81	169.583	0.57	0.06	-0.57	
17878.00	89.970	160.930	6335.63	12596.39	-12533.15	2318.29	1647363.30	14254733.20	39°15'17.5059"N	80°58'31.2648"W	12745.76	169.520	0.19	-0.06	0.20	
17973.00	89.970	161.000	6335.63	12687.39	-12622.99	2349.20	1647394.20	14254643.41	39°15'16.6179"N	80°58'30.8757"W	12839.72	169.458	0.29	0.06	0.11	
18067.00	89.970	161.030	6335.63	12779.39	-12711.85	2379.83	1647424.82	14254554.58	39°15'15.7395"N	80°58'30.4901"W	12932.70	169.396	0.12	0.06	0.11	
18161.00	89.940	161.290	6335.71	12870.39	-12800.82	2410.19	1647455.16	14254465.65	39°15'14.8601"N	80°58'30.10983"W	13025.74	169.337	0.28	-0.03	0.28	
18256.00	89.850	160.810	6335.88	12965.39	-12890.67	2441.04	1647486.00	14254375.83	39°15'13.9719"N	80°58'29.7102"W	13119.76	169.277	0.51	-0.09	-0.51	
18350.00	90.030	161.260	6335.98	13079.39	-12979.57	2471.59	1647516.54	14254286.97	39°15'13.0932"N	80°58'29.3279"W	13212.79	169.219	0.52	0.19	0.48	
18444.00	90.030	161.390	6335.93	13173.39	-13068.62	2501.69	1647546.62	14254197.96	39°15'12.2130"N	80°58'28.9415"W	13305.91	169.163	0.14	0.00	0.14	
18539.00	90.090	161.250	6335.83	13268.39	-13158.61	2532.11	1647577.04	14254108.00	39°15'11.3234"N	80°58'28.5575"W	13400.03	169.108	0.16	0.00	-0.15	
18633.00	90.030	161.230	6335.73	13362.39	-13247.62	2562.35	1647607.26	14254019.03	39°15'10.4436"N	80°58'28.17813"W	13493.15	169.053	0.07	-0.06	-0.02	
18728.00	89.910	160.950	6335.78	13457.39	-13337.49	2593.13	1647638.03	14253929.19	39°15'9.5552"N	80°58'27.7864"W	13587.24	168.998	0.32	-0.13	-0.29	
18822.00	89.780	161.410	6336.04	13551.39	-13426.46	2623.46	1647668.34	14253840.25	39°15'8.6757"N	80°58'27.3940"W	13680.37	168.944	0.51	-0.14	0.49	
18917.00	90.430	161.140	6335.86	13646.38	-13516.44	2653.95	1647698.83	14253750.32	39°15'7.7864"N	80°58'27.0093"W	13774.52	168.891	0.74	0.68	-0.28	
19011.00	90.550	161.270	6335.06	13740.38	-13605.42	2684.24	1647729.10	14253661.37	39°15'6.9068"N	80°58'26.6191"W	13867.68	168.839	0.19	0.13	0.14	
19106.00	90.180	160.990	6334.45	13835.38	-13695.31	2714.96	1647759.81	14253571.51	39°15'6.0183"N	80°58'26.2300"W	13961.83	168.787	0.49	-0.39	-0.29	

RECEIVED  
Office Of Oil and Gas

APR 30 2024

WV Department of  
Environmental Protection

06/14/2024



# Actual Wellpath Report

Maul Unit 3H AWP Proj: 22810'

Page 9 of 12



## REFERENCE WELLPATH IDENTIFICATION

Operator	ANTERO RESOURCES CORPORATION	Well	Maul Unit 3H
Field	Ritchie	API	47-085-10488-0000
Facility	Jackson Pad	Wellbore	Maul Unit 3H AWB
Slot	Slot C		

## WELLPATH DATA (250 stations)

MD [ft]	Inclination [°]	Azimuth [°]	TVD [ft]	Vert Sect [ft]	North [ft]	East [ft]	Grid East [US ft]	Grid North [US ft]	Latitude	Longitude	Closure Dist [ft]	Closure Dir [°]	DLS ["/100ft]	Build Rate ["/100ft]	Turn Rate ["/100ft]	Comments
19200.00	90.770	161.110	6333.67	13929.37	-13784.21	2745.49	1647790.32	14253482.65	39°15'5.1395"N	80°58'26.2314"W	14054.97	168.735	0.64	0.63	0.13	
19295.00	90.120	161.290	6332.94	14024.37	-13874.14	2776.10	1647820.93	14253392.75	39°15'4.2506"N	80°58'25.8426"W	14149.15	168.685	0.71	-0.68	0.19	
19389.00	89.750	160.970	6333.04	14118.37	-13963.09	2806.50	1647851.31	14253303.84	39°15'3.3713"N	80°58'25.4564"W	14242.34	168.635	0.52	-0.39	-0.34	
19484.00	90.030	161.100	6333.22	14213.37	-14052.93	2837.38	1647882.18	14253214.04	39°15'2.4833"N	80°58'25.0643"W	14336.51	168.585	0.32	0.29	0.14	
19578.00	90.000	161.290	6333.20	14307.37	-14141.92	2867.68	1647912.46	14253125.09	39°15'1.6037"N	80°58'24.6795"W	14429.74	168.537	0.20	-0.03	0.20	
19673.00	89.910	161.110	6333.27	14402.37	-14231.85	2898.29	1647943.07	14253035.19	39°15'0.7147"N	80°58'24.2907"W	14523.97	168.489	0.21	-0.09	-0.19	
19661.00	89.880	160.990	6333.50	14496.37	-14320.75	2928.82	1647973.58	14252946.32	39°14'59.8559"N	80°58'23.9030"W	14617.18	168.442	0.16	-0.10	-0.13	
19556.00	89.850	161.070	6333.47	14686.37	-14409.66	2959.33	1648004.84	14252857.45	39°14'58.9571"N	80°58'23.5155"W	14710.40	168.394	0.41	0.38	0.15	
20050.00	89.880	161.310	6333.69	14779.37	-14499.54	2990.10	1648034.84	14252767.61	39°14'58.0886"N	80°58'23.1247"W	14804.64	168.348	0.35	-0.35	-0.06	
20145.00	89.850	161.120	6333.92	14874.37	-14588.52	3020.41	1648065.14	14252678.66	39°14'57.1891"N	80°58'22.7397"W	14897.91	168.303	0.26	0.03	0.26	
20239.00	89.910	161.030	6334.11	14968.37	-14678.46	3051.00	1648095.71	14252588.76	39°14'56.3001"N	80°58'22.3512"W	14992.19	168.258	0.20	-0.03	-0.20	
20333.00	89.780	160.550	6334.37	15062.37	-14767.38	3081.49	1648126.19	14252499.88	39°14'55.4211"N	80°58'21.9640"W	15085.46	168.213	0.12	0.06	-0.10	
20428.00	90.520	161.870	6334.12	15157.36	-14856.14	3112.42	1648157.11	14252411.15	39°14'54.5437"N	80°58'21.5712"W	15178.67	168.167	0.53	-0.14	-0.51	
20522.00	89.820	160.880	6333.84	15251.36	-14946.08	3143.02	1648187.69	14252322.21	39°14'53.6547"N	80°58'21.1827"W	15272.98	168.124	1.59	0.78	1.39	
20617.00	90.000	161.020	6333.99	15346.36	-15035.15	3173.04	1648217.70	14252232.21	39°14'52.7742"N	80°58'20.8014"W	15366.33	168.083	1.29	-0.74	-1.05	
20711.00	89.850	161.390	6334.11	15440.36	-15124.95	3204.04	1648248.70	14252142.45	39°14'51.8866"N	80°58'20.4076"W	15460.60	168.039	0.42	0.19	0.15	
20805.00	90.370	161.190	6333.93	15534.36	-15213.94	3234.33	1648278.97	14252053.50	39°14'51.0070"N	80°58'20.0230"W	15553.93	167.998	0.42	-0.16	0.39	
20900.00	90.340	161.120	6333.34	15629.36	-15302.88	3264.48	1648309.11	14251964.50	39°14'50.1269"N	80°58'19.6401"W	15647.29	167.958	0.59	0.55	-0.21	
20994.00	90.550	161.190	6332.61	15723.35	-15481.83	3295.17	1648339.78	14251874.63	39°14'49.2382"N	80°58'19.2504"W	15741.62	167.917	0.08	-0.03	-0.07	
21089.00	90.460	161.310	6331.06	15818.35	-15571.79	3325.53	1648370.13	14251785.71	39°14'48.3589"N	80°58'18.8648"W	15834.97	167.877	0.24	0.22	0.07	
21184.00	90.370	160.980	6331.09	15913.35	-15661.69	3356.06	1648400.65	14251695.79	39°14'47.4697"N	80°58'18.4771"W	15929.34	167.838	0.16	-0.09	0.13	
21278.00	90.340	161.080	6330.51	16007.34	-15750.58	3386.76	1648431.34	14251605.93	39°14'46.5810"N	80°58'18.0872"W	16023.69	167.798	0.36	-0.09	-0.35	
21373.00	90.250	160.900	6330.02	16102.34	-15840.40	3417.32	1648461.89	14251517.07	39°14'45.7023"N	80°58'17.6992"W	16117.04	167.759	0.11	-0.03	0.11	
21467.00	90.150	162.060	6329.69	16196.34	-15929.53	3448.26	1648492.82	14251427.29	39°14'44.8145"N	80°58'17.3062"W	16211.38	167.719	0.21	-0.09	-0.19	
21561.00	90.280	160.910	6329.34	16290.33	-16018.66	3507.97	1648522.66	14251338.19	39°14'43.9335"N	80°58'16.9277"W	16304.82	167.683	1.24	-0.11	1.23	
21656.00	90.460	161.140	6328.72	16385.33	-16108.50	3538.86	1648552.38	14251249.10	39°14'43.0524"N	80°58'16.5480"W	16398.27	167.648	1.23	0.14	-1.22	
21750.00	90.340	161.440	6328.07	16479.33	-16197.53	3569.01	1648583.38	14251159.30	39°14'42.1644"N	80°58'16.1558"W	16492.64	167.610	0.31	0.19	0.24	
21844.00	90.430	161.500	6327.43	16573.32	-16286.65	3598.89	1648613.52	14251070.30	39°14'41.2843"N	80°58'15.7729"W	16586.07	167.574	0.34	-0.13	0.32	
21938.00	90.370	161.040	6326.78	16667.32	-16375.67	3629.07	1648643.38	14250981.21	39°14'40.4033"N	80°58'15.3935"W	16679.54	167.540	0.12	0.10	0.06	
							1648673.55	14250892.23	39°14'39.5234"N	80°58'15.0103"W	16772.98	167.504	0.49	-0.06	-0.49	

RECEIVED  
Office Of Oil and Gas

APR 30 2024

WV Department of  
Environmental Protection

06/14/2024



# Actual Wellpath Report

Maul Unit 3H AWP Proj: 22810'  
Page 10 of 12



## REFERENCE WELLPATH IDENTIFICATION

Operator	ANTERO RESOURCES CORPORATION	Well	Maul Unit 3H
Field	Ritchie	API	47-085-10488-0000
Facility	Jackson Pad	Wellbore	Maul Unit 3H AWB
Slot	Slot C		

## WELLPATH DATA (250 stations) † = interpolated, ‡ = extrapolated station

MD [ft]	Inclination [°]	Azimuth [°]	TVD [ft]	Vert Sect [ft]	North [ft]	East [ft]	Grid East [US ft]	Grid North [US ft]	Latitude	Longitude	Closure Dist [ft]	Closure Dir [°]	DLS [°/100ft]	Build Rate [°/100ft]	Turn Rate [°/100ft]	Comments
22032.00	90.430	161.200	6326.12	16761.32	-16464.61	3659.49	1648703.95	14250803.33	39°14'38.6442"N	80°58'14.6240"W	16866.40	167.469	0.18	0.06	0.17	
22126.00	90.370	161.020	6325.47	16855.32	-16553.55	3689.92	1648734.37	14250714.43	39°14'37.7651"N	80°58'14.2376"W	16959.82	167.434	0.20	-0.06	-0.19	
22221.00	90.460	161.220	6324.78	16950.31	-16643.43	3720.66	1648765.10	14250624.58	39°14'36.8766"N	80°58'13.8473"W	17054.24	167.399	0.23	0.09	0.21	
22315.00	90.370	161.070	6324.10	17044.31	-16732.39	3751.03	1648795.47	14250535.66	39°14'35.9973"N	80°58'13.4615"W	17147.68	167.364	0.19	-0.10	-0.16	
22409.00	90.310	161.390	6323.54	17138.31	-16821.39	3781.28	1648825.70	14250446.70	39°14'35.1175"N	80°58'13.0775"W	17241.15	167.331	0.35	-0.06	0.34	
22503.00	90.490	161.060	6322.88	17232.31	-16910.38	3811.53	1648855.94	14250357.74	39°14'34.2378"N	80°58'12.6933"W	17334.61	167.298	0.40	0.19	-0.35	
22598.00	90.550	161.090	6322.02	17327.30	-17000.24	3842.34	1648886.74	14250267.91	39°14'33.3496"N	80°58'12.3021"W	17429.05	167.264	0.07	0.06	0.03	
22692.00	90.400	161.380	6321.24	17421.30	-17089.24	3872.58	1648916.96	14250178.95	39°14'32.4698"N	80°58'11.9182"W	17522.53	167.232	0.35	-0.16	0.31	
22785.00	90.400	161.150	6320.59	17514.29	-17177.31	3902.45	1648946.82	14250090.91	39°14'31.5992"N	80°58'11.5389"W	17615.03	167.200	0.25	0.00	-0.25	
22810.00‡	90.400	161.150	6320.42	17539.29	-17200.97	3910.53	1648954.90	14250067.26	39°14'31.3654"N	80°58'11.4363"W	17639.89	167.192	0.00	0.00	0.00	Projected MD at TD: 22810'

## HOLE & CASING SECTIONS - Ref Wellbores: Maul Unit 3H AWB Ref Wellpath: Maul Unit 3H AWP Proj: 22810'

String/Diameter	Start MD [ft]	End MD [ft]	Interval [ft]	Start TVD [ft]	End TVD [ft]	Start N/S [ft]	End N/S [ft]	Start E/W [ft]	End E/W [ft]
20in Conductor	30.00	130.00	100.00	30.00	130.00	0.00	0.11	0.00	0.11
17.5in Open Hole	130.00	369.00	239.00	130.00	369.00	0.11	0.71	-0.04	-0.71
13.375in Casing Surface	30.00	350.00	320.00	30.00	350.00	0.00	0.75	0.00	-0.51
12.25in Open Hole	369.00	3415.00	3046.00	369.00	3218.73	0.71	-814.60	-0.71	-606.97
9.625in Casing Intermediate	30.00	3386.00	3356.00	30.00	3191.42	0.00	-805.99	0.00	-602.38
8.75in Open Hole	3415.00	6128.00	2713.00	3218.73	5713.66	-814.60	-1658.01	-606.97	-1250.20
8.5in Open Hole	6128.00	22810.00	16682.00	5713.66	6320.42	-1658.01	-17200.97	-1250.20	3910.53
5.5in Casing Production	30.00	22790.00	22760.00	30.00	6320.56	0.00	-17182.05	0.00	3904.07

RECEIVED  
Office Of Oil and Gas

APR 30 2024

WV Department of  
Environmental Protection

06/14/2024



# Actual Wellpath Report

Maul Unit 3H AWP Proj: 22810'  
Page 11 of 12



### REFERENCE WELLPATH IDENTIFICATION

Operator	ANTERO RESOURCES CORPORATION	Well	Maul Unit 3H
Field	Ritchie	API	47-085-10488-0000
Facility	Jackson Pad	Wellbore	Maul Unit 3H AWB
Slot	Slot C		

### TARGETS

Name	TVD [ft]	North [ft]	East [ft]	Grid East [US ft]	Grid North [US ft]	Latitude	Longitude	Shape
Maul Unit 3H POE Rev-2	6278.00	-2189.83	-1230.38	1643816.05	14265072.37	39°16'59.7439"N	80°59'16.7515"W	point
Maul Unit 3H BHL Rev-3	6316.00	-17231.69	3928.63	1648972.99	14250036.56	39°14'31.0617"N	80°58'11.2064"W	point
Maul Unit 3H LP Rev-2	6316.00	-2407.57	-1155.70	1643890.70	14264854.72	39°16'57.5917"N	80°59'15.8021"W	point
Maul Unit 3H 50' L/R Hard Line	6750.00	-9710.76	1349.12	1646394.52	14257554.46	39°15'45.4042"N	80°58'43.9693"W	rectangle

### WELLPATH COMPOSITION - Ref Wellbore: Maul Unit 3H AWB Ref Wellpath: Maul Unit 3H AWP Proj: 22810'

Start MD [ft]	End MD [ft]	Positional Uncertainty Model	Log Name/Comment	Wellbore	Survey Date
30.00	258.00	Gyrodatta 2015 - GC+WIR+DPIPE	01 Gyrodatta MS Gyro <17-1/2"> (100'-258')	Maul Unit 3H AWB	7/7/2023
258.00	3345.00	BH NaviTrak (2019) (Axial Corr+HRGM)	02 APS EIM <12-1/4"> (258')(414'-3345')	Maul Unit 3H AWB	7/7/2023
3345.00	6051.00	BH NaviTrak (2019) (Axial Corr+HRGM)	03 APS EIM <8-3/4"> (3345')(3404'-6051')	Maul Unit 3H AWB	8/3/2023
6051.00	22810.00	BH AutoTrak CurveXpress (2019) (HRGM, Short spacing)	04 BH AT Curve <8-1/2"> (6051')(6174'-22785')	Maul Unit 3H AWB	8/3/2023

RECEIVED  
Office Of Oil and Gas  
APR 30 2024  
WV Department of  
Environmental Protection

06/14/2024



# Actual Wellpath Report

Maui Unit 3H AWP Proj: 22810'  
Page 12 of 12



## REFERENCE WELLPATH IDENTIFICATION

Operator	ANTERO RESOURCES CORPORATION	Well	Maui Unit 3H
Field	Ritchie	API	47-085-10488-0000
Facility	Jackson Pad	Wellbore	Maui Unit 3H AWB
Slot	Slot C		

## COMMENTS

Wellpath general comments  
 API: 47-085-10488-0000  
 BH Job #: 111872706  
 Rig: H&P 519  
 Duration: 8/5/2023-8/9/2023  
 Gyrodata MS Gyro <17-1/2"> (100'-258')  
 APS EM <12-1/4"> (258')(414'-3345')  
 APS EM <8-3/4"> (3345')(3404'-6051')  
 BH AT Curve <8-1/2"> (6051')(6174'-22785')  
 Sycamore: 6635' MD  
 Middlesex: 6670' MD  
 Burkett: 6885' MD  
 Tully: 6959' MD  
 Marcellus POE: 6999' MD  
 Projected MD at TD: 22810'

RECEIVED  
 Office Of Oil and Gas  
 APR 30 2024  
 WV Department of  
 Environmental Protection

06/14/2024