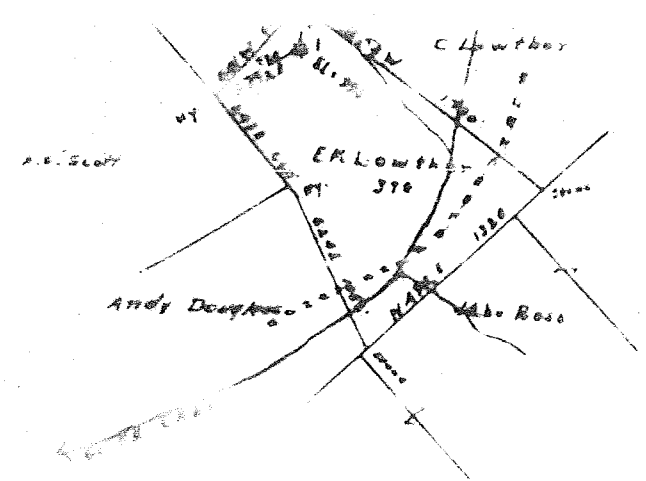


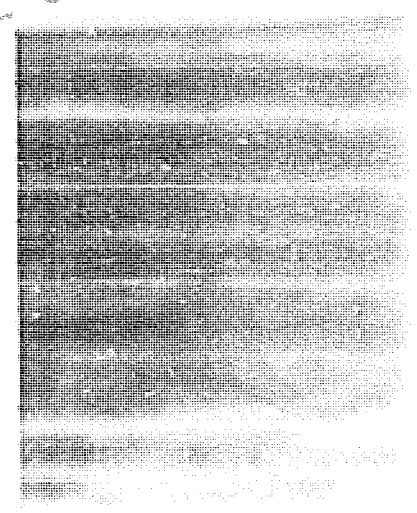
2.65 S 39° 20'  
0.95 W 81° 07' 30"

Schultz 7.5' quad  
St. Marys SC.

calc 15 loc { 2.65 S  
3.18 W } bla  
3/18/97



RIT-41-A  
Scale 1" = 800'



RIT-41A

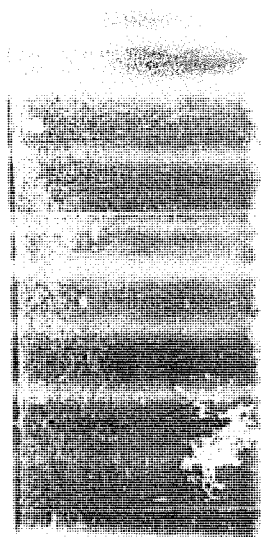
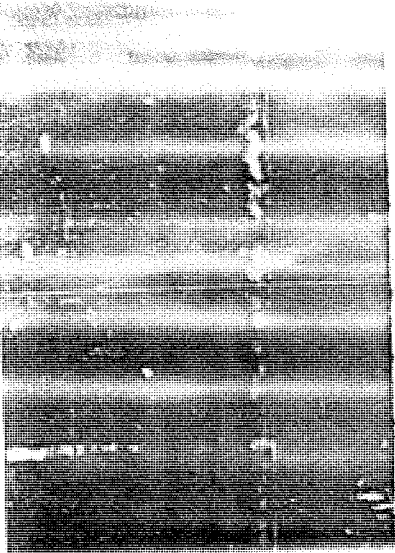
the following manner:

Manner in which sand was plugged: Injun Sand at 1806-1864', hole filled with mud to 1785'; 3 3/16 Lead Plug driven in Big Line at 1780'; hole filled with mud to 1700'; 3 5/8 Lead Plug driven at 1695'; hole filled with mud to 1475'; 6 5/8 Lead Plug driven at 1470'; hole filled with mud to 1400'; Dry Hole Plug driven at 1397'; hole filled with earth to surface.

Manner in which coal was plugged:

Description of monument: Monument made of 8 1/2" casing and filled with cement.

016  
2.7.773  
6-24-31



DAVID IN THE DATE TO TIME AND MANNER OF  
PLUGGING OR STOPPING WELL

WEST VIRGINIA DEPARTMENT OF MINES  
OIL AND GAS SECTION

O. O. Lowther

COAL OPERATOR

Route #2, Cairo, W. Va.

ADDRESS

COAL OPERATOR

COAL OPERATOR

ADDRESS

SOUTH PENN OIL COMPANY

NAME OF WELL OPERATOR

P. O. Drawer 1255, Pittsburgh, Pa.

June 12, 1931

WELL AND LOCATION

Grant District

Ritchie County

Well No. 1

E. K. Lowther Farm

IT IN TRIPlicate TO TIME AND MAINE  
PLUGGING AND FILLING WELL

REGULATED BY SECTION 8, CHAPTER 48, ACTO 1931

VIRGINIA DEPARTMENT OF MINES  
OIL AND GAS SECTION

SOUTH PENN OIL CO  
W. Va. P. Drawer 1215,  
WEL AND L  
GR at  
Ri oh  
Well No.  
E. K. ORE

ONE COPY TO BE MAILED BY REGISTERED MAIL TO THE DEPARTMENT OF MINES, DEPARTMENT OF COMMERCE, WASHINGTON, D. C. AND ONE COPY TO BE FILED IN EACH COAL OPERATION ABOVE MENTIONED.

AFFIDAVIT

IA,  
I do hereby  
docks  
ing to law depose and say that they are experienced  
and were employed by SOUTH PENN OIL COMPANY  
of plugging and filling the above well, that said work was  
May, 1931, and that the well was plugged

was plugged Injun Sand at 1803-1811' hole  
18 Lead Plug driven in Big Line at 1711'  
6 5/8 Lead Plug driven at 1695'  
3 Lead Plug driven at 1470'; hole filled with  
g driven at 1397'; hole filled with

was plugged:

ent: Monument made of 8 1/2" Casin

IN DETAIL AND ACCORDANCE WITH THE PROVISIONS OF SECTION 8, CHAPTER 48, ACTO 1931,  
g and filling said well was completed on the 5th

saith not.

*J. B. ...*

ed before me this 20th day of June

*R. ...*

RET 41-A.

Grant District, Mitchell County, W. Va.  
 South Penn Oil Co.

On 37 acres, surface owned by J. C. Lowther, O. G. Lowther,  
 and E. K. Lowther, Route 2, Cairo, W. Va., and mineral  
 rights by C. Lowther, Pike, W. Va.

Elevation, 998' L.

16' conductor; 10" casing, 324'; 8 1/2", 1062'; 6-5/8", 1452';  
 5-3/16", 1788'; 2", 1865'.

Packer, 5-3/16x6-5/8, set at 1763'.

No coal encountered.

Abandonment reported to Dept. of Mines, Feb. 16, 1931.

Well was not shot.

	Top.	Bottom.
Big Red	730	800
Sand	800	815
Little Dunkard Sand (gas, 900')	890	930
Big Dunkard Sand	1000	1025
Gas Sand	1180	1240
Salt Sand	1310	1390
Second Salt Sand	1465	1560
Maxton Sand	1695	1755
Big Lime	1755	1803
Keener Sand (gas, 1805-1820')	1803	1827
Big Injun Sand	1827	1864
Slate, to bottom	1864	1867

Grant District, Ritchie County, W. Va.

By South Penn Oil Co., P. O. Drawer 1255, Pittsburgh, Pa.

On 37 acres, surface owned by J. C. Lowther, O. G. Lowther, and  
 R. K. Lowther, Route 2, Cairo, W. Va., and mineral rights  
 by O. Lowther, Pike, W. Va.

Elevation, 998' L.

16" conductor; 10" casing, 324'; 8 1/4" casing, 1072'; 6-5/8" casing, 1466'; 5-3/16" casing,  
 1780'; 2" tubing, 1865'.

Packer, 5-3/16 x 6-5/8, set at 1763'.

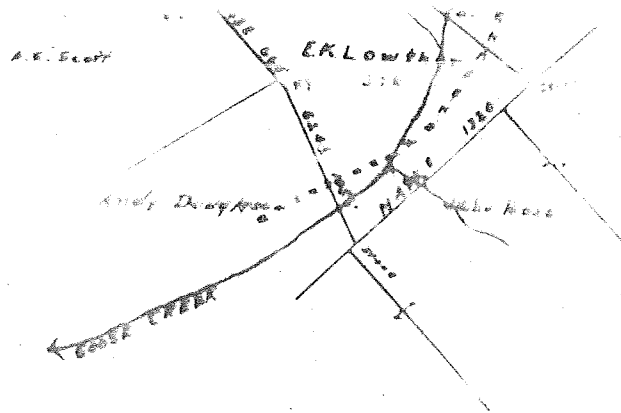
No coal was encountered.

Abandonment reported to Dept. of Mines Feb. 16, 1931.

Well was not shot.

\*reducing hole.

	Top.	Bottom.
Wooden conductor	0	- 16
10" casing	0	- 324
Big Red	730	- 800
Sand	800	- 815
Little Dunkard Sand (gas, 900')	890	- 930
Big Dunkard Sand	1000	- 1025
8 1/4" casing	0	- 1062
Gas Sand	1180	- 1240
Salt Sand	1310	- 1390
6-5/8" casing	0	- 1451
2nd Salt Sand	1465	- 1560
Maxton Sand	1695	- 1755
5-3/16" casing	0	- 1763
Big Lime	1755	- 1803
Keener Sand (gas, 1805-1820')	1803	- 1827
Big Injun Sand	1827	- 1864
Slate, to bottom	1864	- 1867



RIT-41-1  
Scale to 600'