

Latitude

39°10'

81°12'30"

Longitude

→ 7.5' loc
k/a 12346

Topo Location

7.5' Loc. 197S 15' Loc. 197S
0.79W (calc.) 3.02W

Company _____

Farm WL Middleton 1

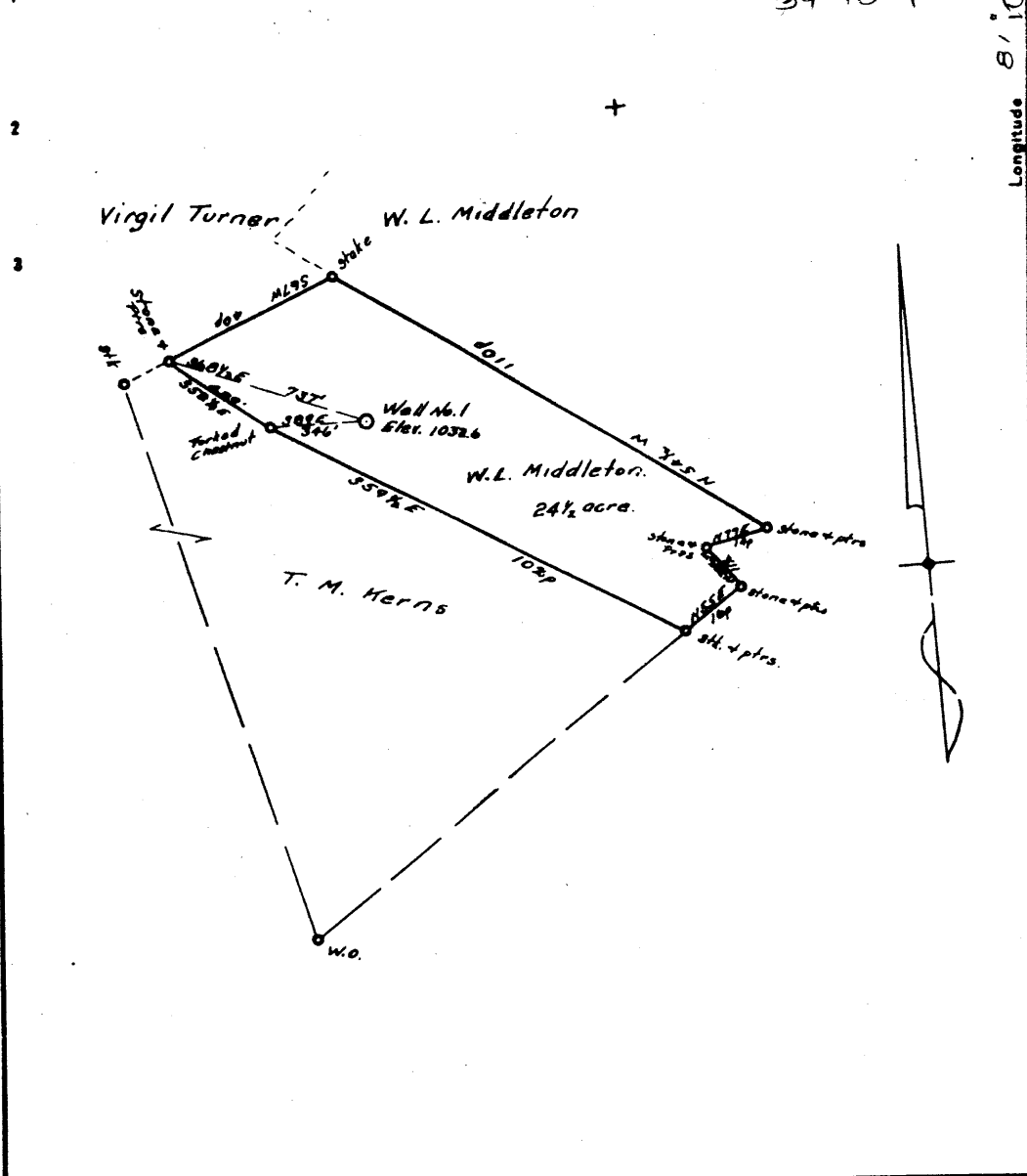
15' Quad Harrisville
(sec.)

7.5' Quad Cairo

District Grant

WELL LOCATION PLAT

County 085 Permit 30253



Company BRISTOL OIL & GAS CO.
 Address 2112 Oliver Bldg. Pa.
Pittsburg, Pa.
 Farm W. L. Middleton
 Tract Acres 24 1/2 Lease No. _____
 Well (Farm) No. ONE Serial No. _____
 Quadrangle HARRISVILLE
 County RITCHIE
 District GRANT
 Engineer O. T. Barnhart ESPE
 Engineer's Registration No. _____

STATE OF WEST VIRGINIA
 DEPARTMENT OF MINES
 OIL AND GAS DIVISION
 CHARLESTON

WELL LOCATION MAP
 FILE NO. RIT-263A

† Denotes location of well on United States Topographic Maps, scale 1 to 62,500, latitude and longitude lines being represented by border lines as shown.

- Denotes one inch spaces on border line

Rit
30253

Name	Color	Character	Oil, Gas or Water	Top	Bottom	Thickness	Total Depth	Remarks
Conductor						12		
10" Pipe						316		
Big Red				750	810	60		
8" Pipe					1060			
Goble				1100	1120	20		
Black Slate				1120	1140	20		
White Slate				1140	1290	150		
Sand				1290	1340	50		
Slate				1340	1400	60		
Sand				1400	1450	50		
Black Slate				1450	1486	36		
Sand				1486	1527	41		
Brake				1527	1542	15		1507-5 3/4
Sand				1542	1583	41		
Slate				1583	1605	22		
Sand				1605	1625	20		
Slate				1625	1665	40		
Sand				1665	1678	13		
Slate				1678	1717	39		
Sand				1717	1732	15		
Gas			Gas	1728	1732	4		
Black Slate				1732	1817	85		
Maxim Sand				1817	1840	32		
Gas			Gas	1817	1822	5		
Oil			Oil	1822	1827	5		
Big Line				1849	1939	90		
Keener				1939	1965	26		
Engine				1965	2035	70		
Gas			Gas	2016	2030			
Oil			Oil	2021	2030			
Drilled to							2069	

Well was not shot at 2016-2031 feet; well was shot at feet.

Salt water at feet; fresh water at feet.

Well was ~~not~~ producing hole.

BRISTOL OIL & GAS COMPANY

June 9th 1936 Date Approved [Signature] Owner

NOTE: All bottom formations must be noted as indicated above and all key-rocks and oil and gas sands must be recorded under their proper geological names in the district as well as any local names commonly used in the district for such strata.