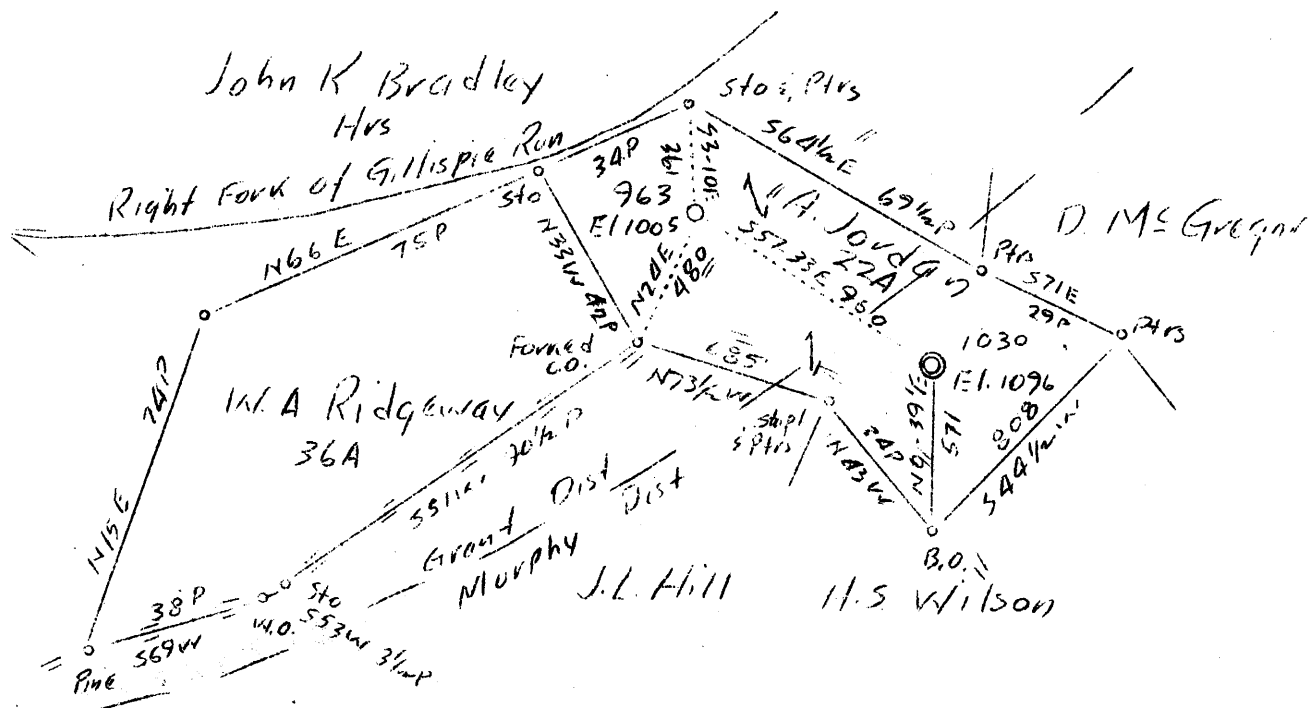


LATITUDE 39° 10'

LONGITUDE 81° 10'



1.8 W  
2.94 S

Abd 963

F.B. 380 P. 18

Company	Hope Construction & Ref. Co.
Address	Charleburg, W.Va.
Name	Andrew Jordan
Tract	Acres 22 Lease No. 35565
Well (Farm) No.	1 Serial No. 963
Elevation (Spirit Level)	1005
Quadrangle	Harrisville W.C.
County	Ritchie District Grant
Engineer	W.H. Powers
Engineer's Registration No.	900'
File No.	Drawing No.
Date	Mar. 4, 1938 Scale 1"-40 Poles

STATE OF WEST VIRGINIA  
 Department of Mines  
 OIL AND GAS DIVISION  
 CHARLESTON

WELL LOCATION MAP

File No. RIT-349A

+ Denotes location of well on United States Topographic Maps, scale 1 to 62,500, latitude and longitude lines being represented by border lines as shown.

— Denotes one inch spaces on border line of original tracing.