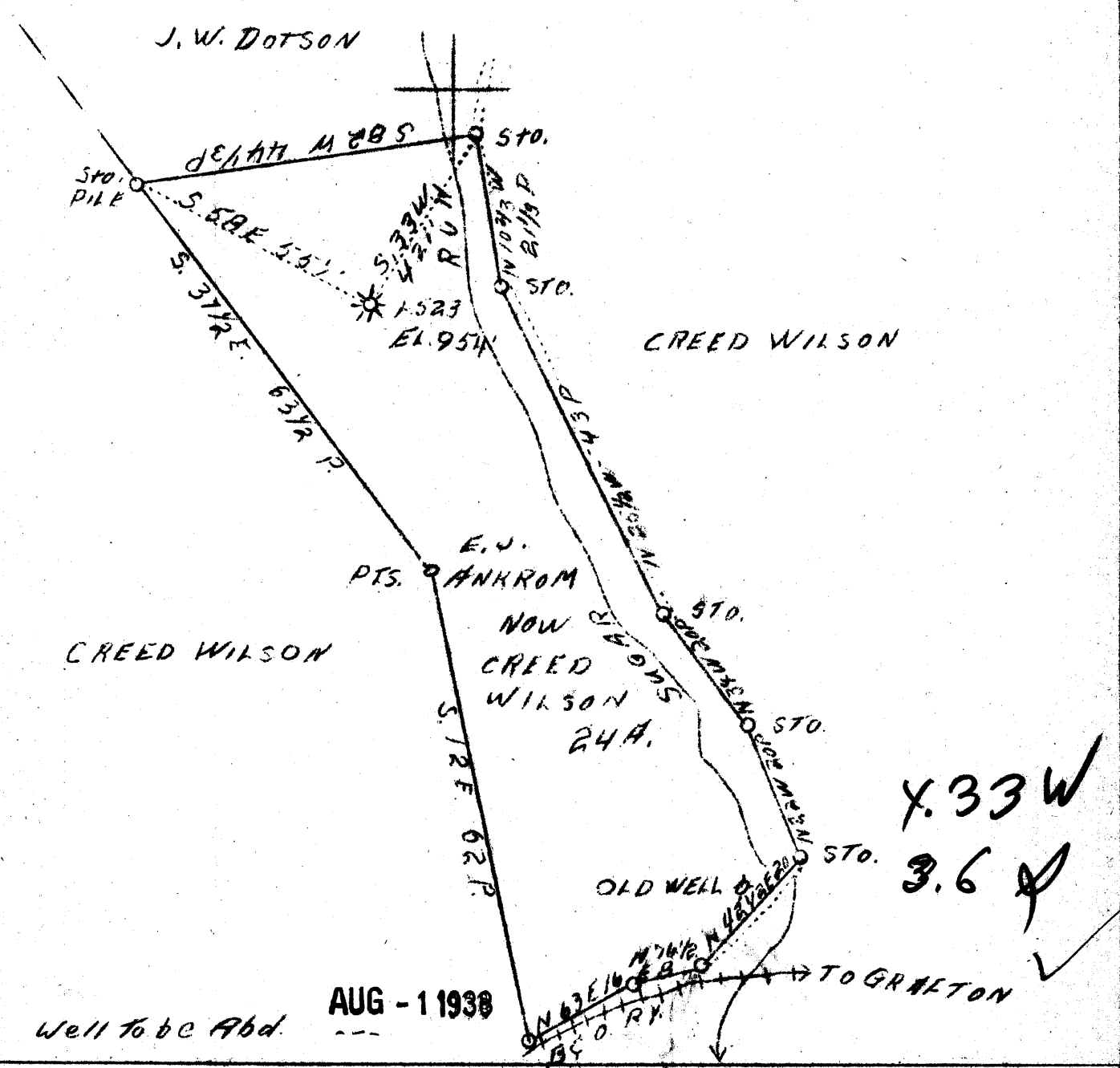


Sum 1/12/93
50'
LONGITUDE 80° 20'



Company	Carnegie Nat. Gas Co.
Address	Pittsburgh, Penna.
Farm	E. J. Ankrom
Tract	1
Acres	24
Lease No.	E-8087-61
Well (Farm) No.	1
Serial No.	523
Elev. (Spirit Level)	954
Quadrangle	Nest Union S. 7. 1/4
County	Ritche
District	Clay
Eng.	D. T. Britton
Date	7-14-38
Scale	1" = 20P

STATE OF WEST VIRGINIA
Department of Mines
OIL AND GAS DIVISION
Charleston

RELLOCATION MAP

File No. Rit-365-A

x Denotes location of well on U.S. Topographic maps, scale 1 to 62,500, latitude and longitude lines being represented by border lines as shown.

- Denotes one inch spaces on border line of original tracing.

