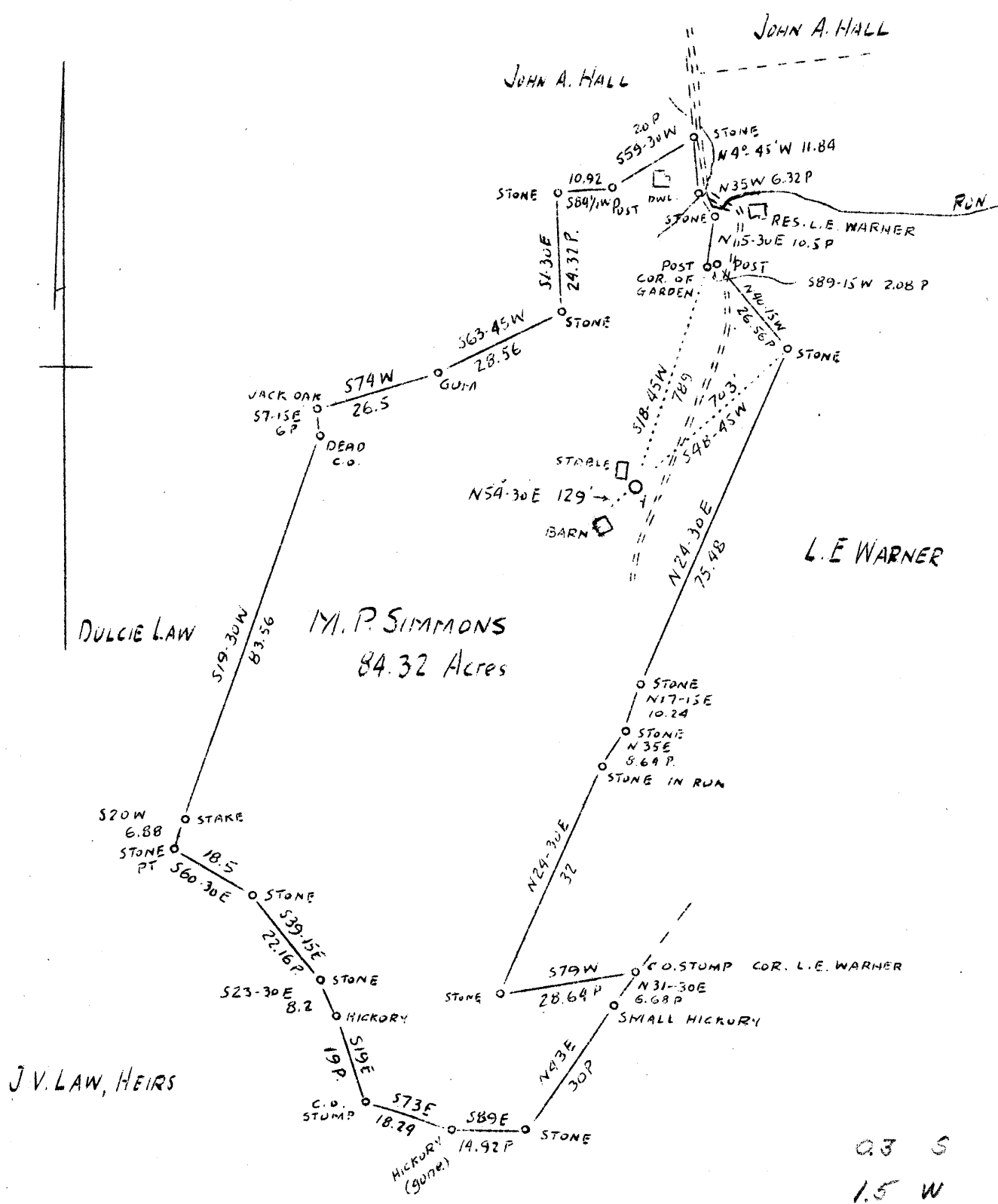


LATITUDE 39° 05'

LONGITUDE 80° 50'



ABANDONMENT

Company	W. F. Carmichael
Address	Parkersburg, West Virginia Route #21
Farm	M. P. Simmons
Acres	84.32
Well (Farm) No.	1
Elevation (Spirit Level)	932.3
Quadrangle	Holbrook S.C.
County	Ritchie
District	Union
Eng.	J. V. Dunbar
Eng. Reg. No.	65
File No.	C. 23
Date	June 14, 1938
Scale	1"-30 Poles-495'

STATE OF WEST VIRGINIA
Department of Mines
OIL & GAS DIVISION
Charleston

WELL LOCATION MAP

File No. RIT-366 A

x Denotes location of well on U. S. Topographic Maps, scale 1 to 65,500, latitude and longitude lines being represented by border lines as shown.

- Denotes one inch spaces on border line of original tracing.

RECEIVED
 1958
 10/20/58

DEPARTMENT OF THE ARMY
 HEADQUARTERS
 WASHINGTON, D. C.

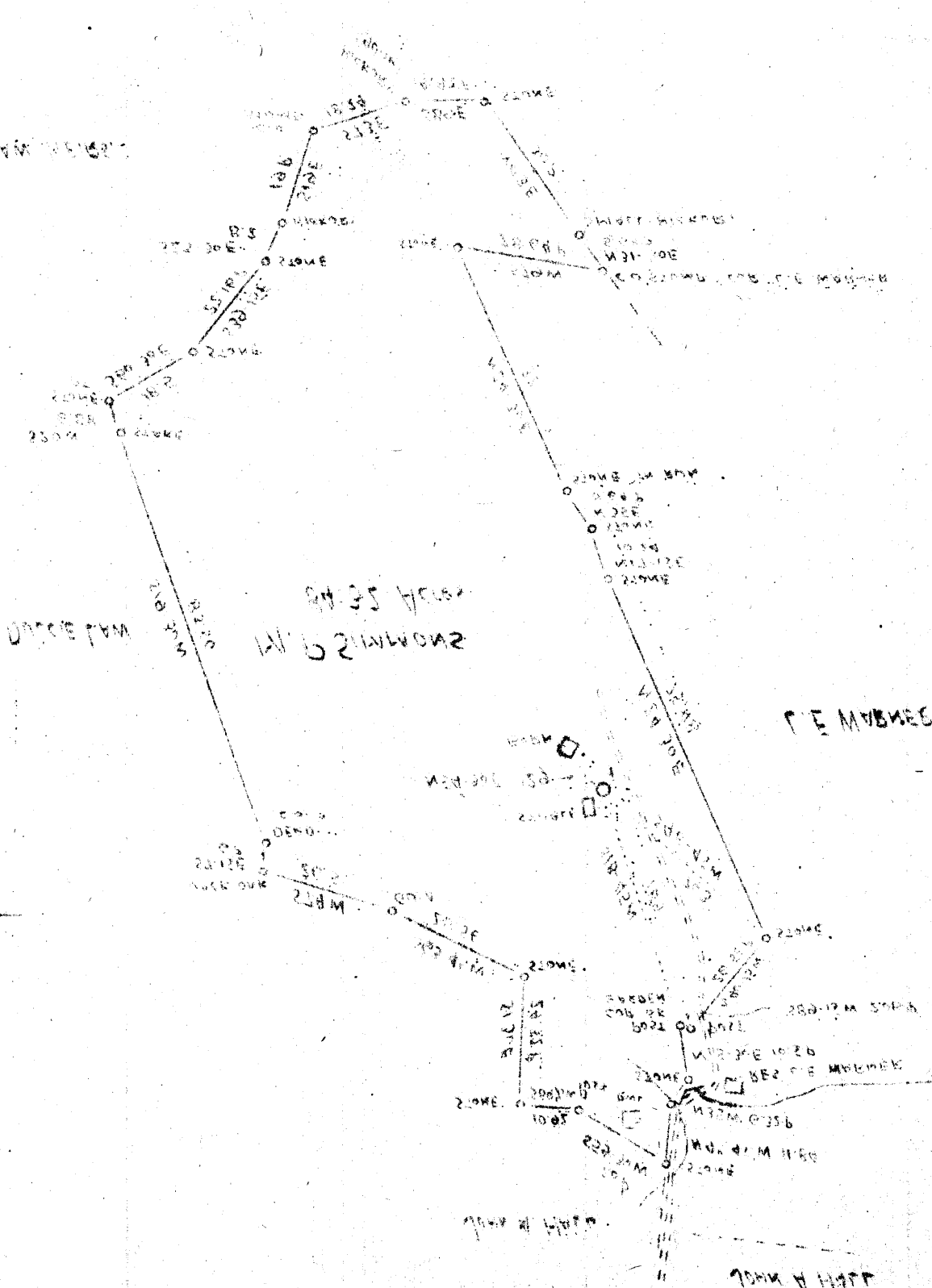
REF ID: A66000

10-20-58

OPERATIONAL

OPERATIONAL
 HEADQUARTERS
 WASHINGTON, D. C.

OPERATIONAL



FORM 1000 30-30

CO. OF 1000