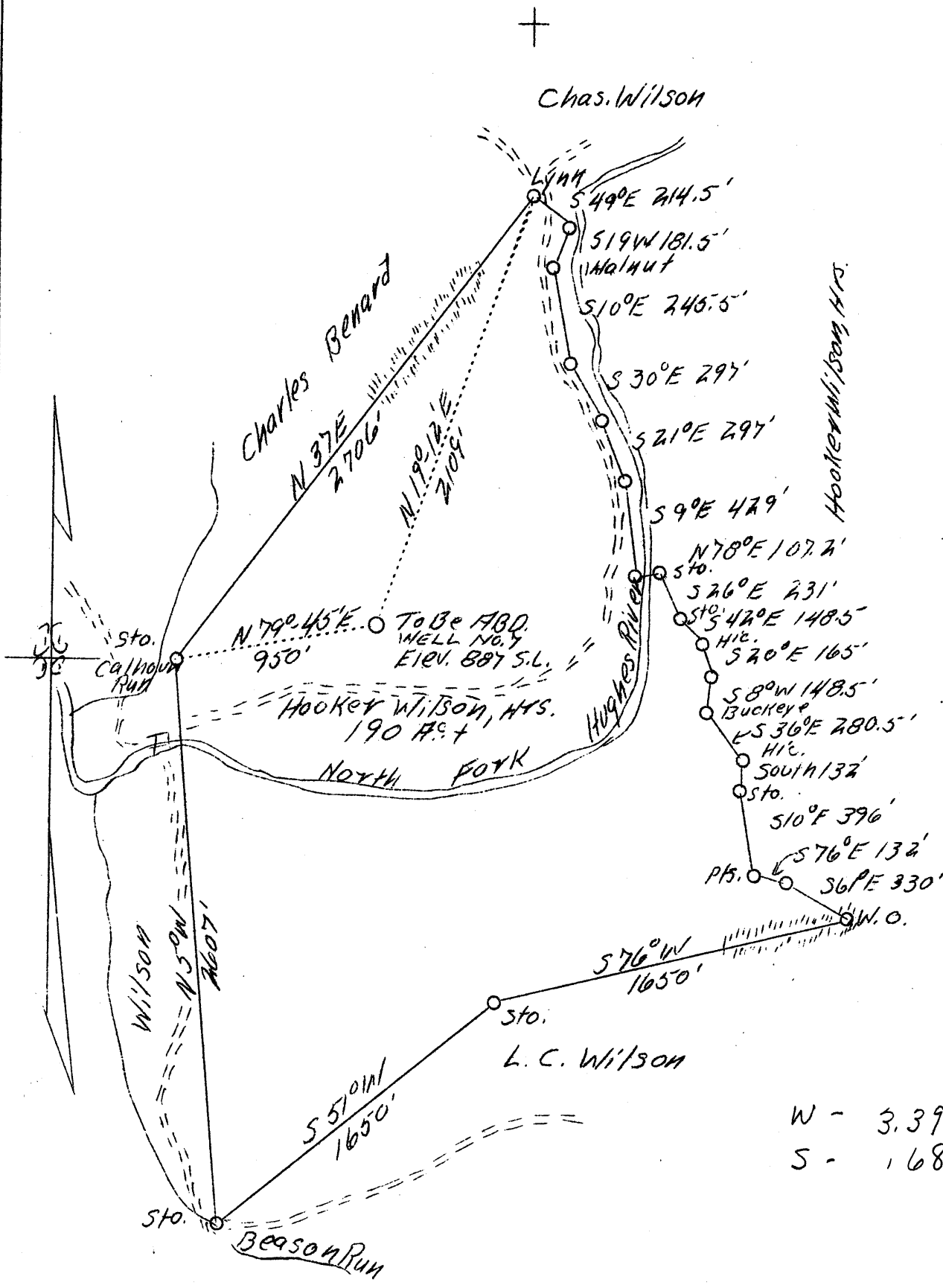


LATITUDE 39°-15'

LONGITUDE 80°-55'



W - 3.39
S - 1.68

Well to be ABD.

Company	McCall Drilling Co.
Address	612 Keystone Bldg. Pittsburgh, Pa.
Farm	Hooker Wilson, Heirs
Tract	1
Acres	190
Well(Farm)No.	43 - 72
Quadrangle	Holbrook N.W.
County	Ritchie
District	Clay
Eng.	J.V. Dunbar
Eng. Reg. No.	65
File No.	C - 23 - L
Date	6/20/39
Scale	1" - 660'

STATE OF WEST VIRGINIA
Department of Mines
OIL AND GAS DIVISION
Charleston

WELL LOCATION MAP

File No. Rit-406-A

x Denotes location of well on U.S. Topographic Maps, scale 1 to 62,500, latitude and longitude lines being represented by border lines as shown.

- Denotes one inch spaces on border line of original tracing.