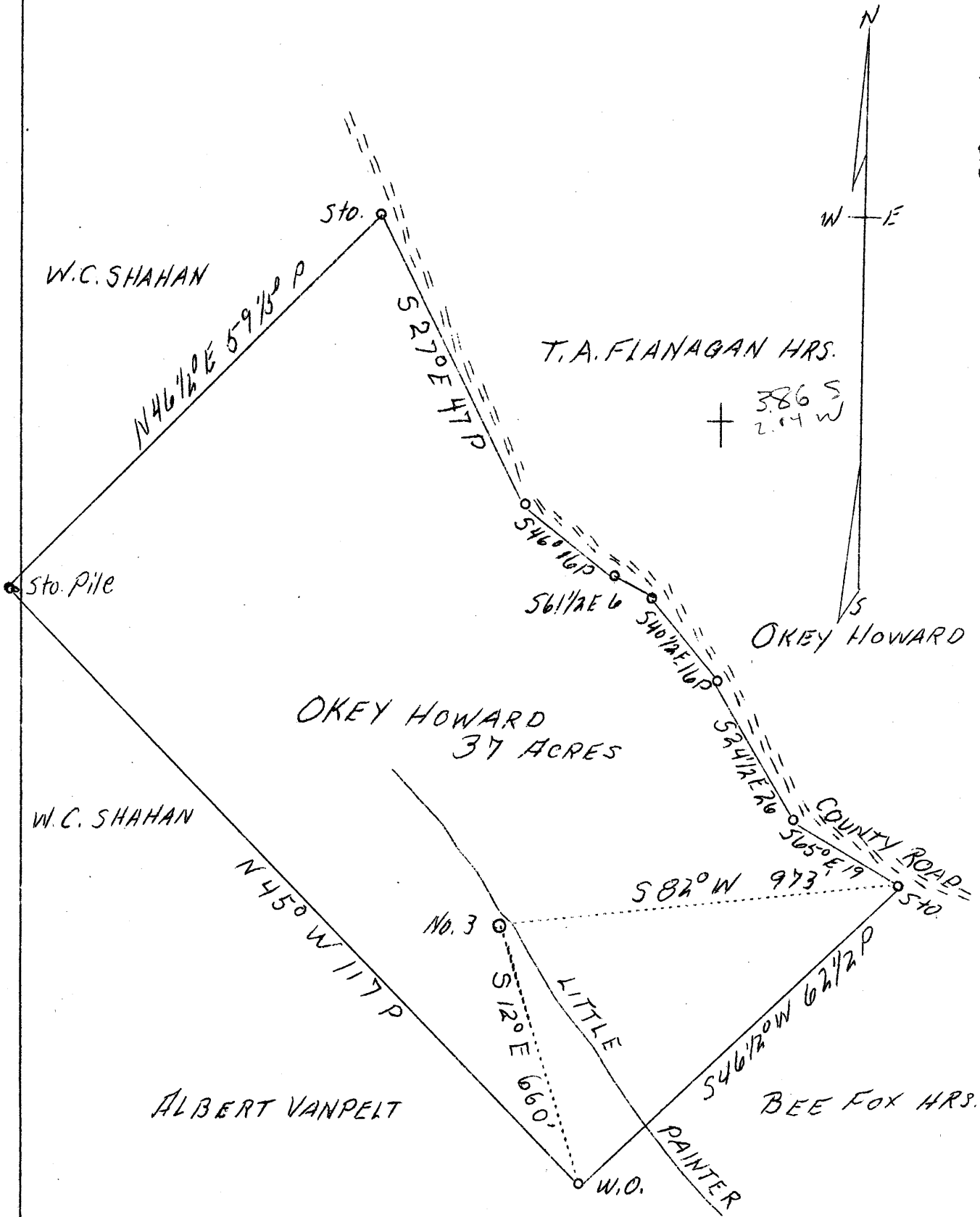


LATITUDE 39° 20'

LONGITUDE 82° 05'



ABD.

SURVEYED AND PLATTED BY ROBERT CHALFANT PIKE, W.VA.

Company	Henaghan & Hanlon, Inc.,
Address	Sistersville, W. Va.
Farm	Okey Howard
Acres	37
Well (Farm) No.	3
Elevation (SL)	913.5
Quadrangle	St. Marys S. E.
County	Ritchie
District	Grant
Engineer	J. V. Dunbar
Eng. Reg. No.	65
File No.	C-23-L
Date	May 20, 1939
Scale	20 rods to 1 inch

STATE OF WEST VIRGINIA
 Department of Mines
 OIL & GAS DIVISION
 Charleston

WELL LOCATION MAP

File No. Rit-407-A

x Denotes location of well on U. S. Topographic Maps, scale 1 to 62,500, latitude and longitude lines being represented by border lines as shown.

- Denotes one inch spaces on border line of original tracing.