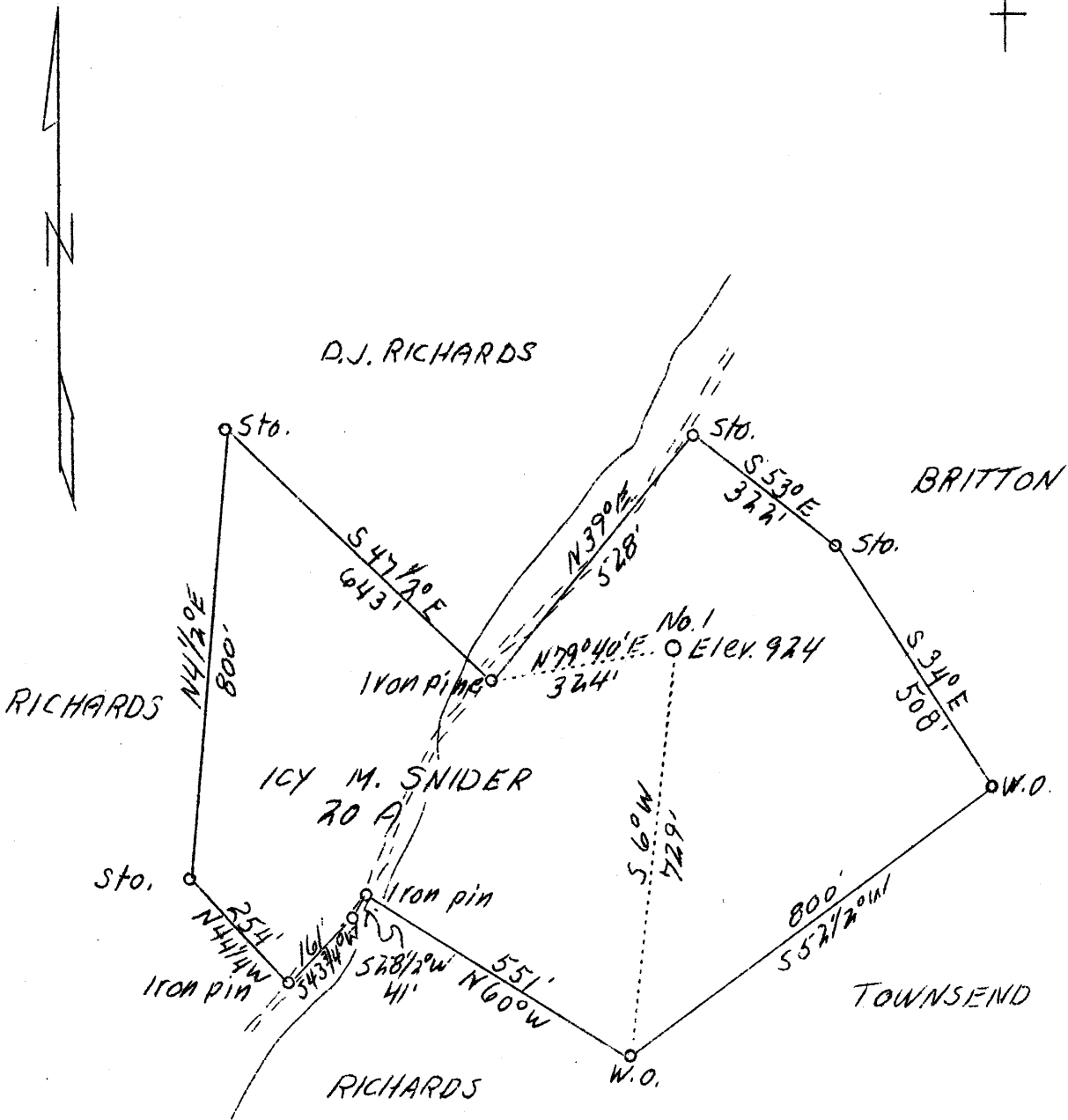


LATITUDE 39° 10'

LONGITUDE 80° 50'



S-0.87  
W-1.03

ABD.

Company	F.S. Deem
Address	Harrisville, W.Va.
Farm	Icy M. Snider
Acres	20
Well (Farm) No.	1
E.L. (S.L.)	924
Quadrangle	C Holbrook
County	Ritchie
District	Union
Eng.	B.F. Rinehart
Eng. Reg. No.	648
Drawing No.	189 - U - R
Date	6/17/39
Scale	1" = 300'

STATE OF WEST VIRGINIA  
Department of Mines  
OIL AND GAS DIVISION  
Charleston

WELL LOCATION MAP

File No. RIT-409-A

x Denotes location of well on U.S. Topographic Maps, scale 1 to 62,500, latitude and longitude lines being represented by border lines as shown.

- Denotes one inch spaces on border line of original tracing.

