

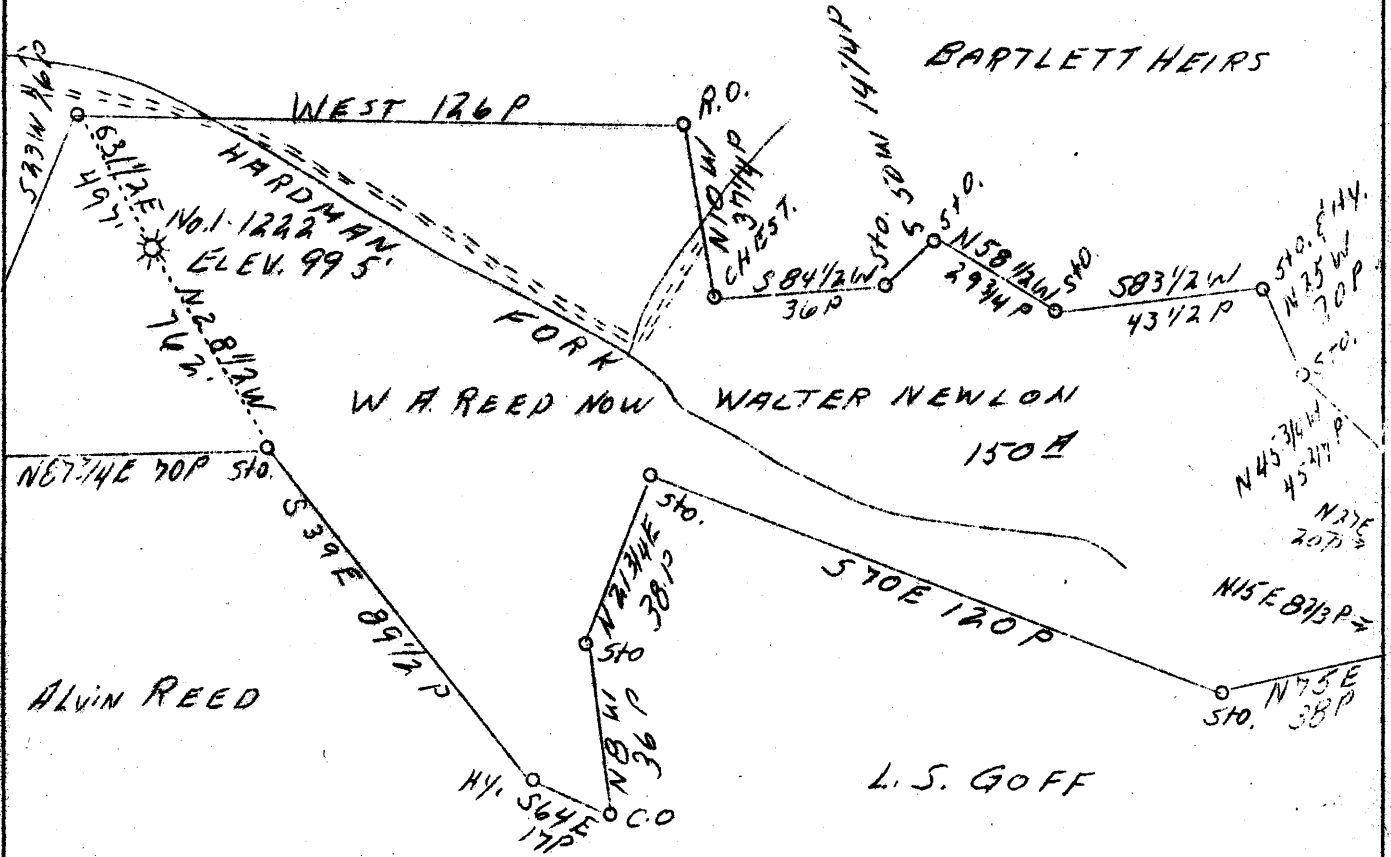
LATITUDE 39°05'

LONGITUDE 80°50'



J. W. COLLINS

BARTLETT HEIRS



4.42 W  
0.92 P

Well to be Abd.

JUL 31 1939

Company	Carnegie Natural Gas Co.
Address	Pittsburgh, Pa.
Farm	W. A. Reed
Tract	1
Acres	150
Lease No.	E-8783-64
Well (Farm) No.	1
Serial No.	1222
Elevation (SL)	955
Quadrangle	Holbrook S. W. 1/4
County	Ritchie
District	Union
Engineer	D. T. Britton
Eng. Reg. No.	-
Date	July 10, 1939
Scale	1" = 40 poles = 660'

39

STATE OF WEST VIRGINIA  
Department of Mines  
OIL & GAS DIVISION  
Charleston

WELL LOCATION MAP

File No. Rit-412-A

x Denotes location of well on U. S. Topographic Maps, scale 1 to 62,500, latitude and longitude lines being represented by border lines as shown.

- Denotes one inch spaces on border line of original tracing.

WEST VIRGINIA DEPARTMENT OF MINES  
OIL AND GAS DIVISION

458

WELL RECORD

Permit No. *412-A*  
*Holbrook*

Well To Be Abandoned

Oil or Gas Well **Gas**  
(Kind)

Company **Carnegie Natural Gas Co**  
 Address **1014 Frick Bldg Pittsburgh Penna**  
 Farm **W A Reed** Acres **160**  
 Location (waters) **Hardman Fork**  
 Well No. **1-1222** Elev. **955**  
 District **Union** County **Ritchie**  
 The surface of tract is owned in fee by **Walter and Ola C Newlon** Address **Lawford W Va**  
 Mineral rights are owned by **same** Address \_\_\_\_\_  
 Drilling commenced **Oct 2 1923**  
 Drilling completed **Nov 5 1923**  
 Date shot \_\_\_\_\_ Depth of shot \_\_\_\_\_  
 Open Flow /10ths Water in \_\_\_\_\_ Inch  
 \_\_\_\_\_ 20/10ths Merc. in **2** \_\_\_\_\_ Inch  
 Volume **785 000** Cu. Ft.  
 Rock Pressure **430** lbs. **15** hrs.  
 Oil \_\_\_\_\_ bbls., 1st 24 hrs.  
 Fresh water \_\_\_\_\_ feet \_\_\_\_\_ feet  
 Salt water \_\_\_\_\_ feet \_\_\_\_\_ feet

Casing and Tubing	Used in Drilling	Left in Well	Packers
Size			Kind of Packer
16			
13			
10		<b>230</b>	Size of
8 1/4		<b>1018</b>	
6 5/8		<b>1874</b>	Depth set
5 3/16			
3			Perf. top
2			Perf. bottom
Liners Used			Perf. top
			Perf. bottom

CASING CEMENTED \_\_\_\_\_ SIZE \_\_\_\_\_ No. FT. \_\_\_\_\_ Date \_\_\_\_\_  
 COAL WAS ENCOUNTERED AT \_\_\_\_\_ FEET \_\_\_\_\_ INCHES  
 \_\_\_\_\_ FEET \_\_\_\_\_ INCHES \_\_\_\_\_ FEET \_\_\_\_\_ INCHES  
 \_\_\_\_\_ FEET \_\_\_\_\_ INCHES \_\_\_\_\_ FEET \_\_\_\_\_ INCHES

Formation	Color	Hard or Soft	Top	Bottom	Oil Gas or Water	Depth Found	Remarks
Little Dunkard			920	965			
Big Dunkard			1010	1030			
Gas Sand			1050	1175			
2nd Salt Sand			1565	1725			
Maxon Sand			1780	1812	Gas	1792-1797	
Little Lime			1835	1855			
Big Lime			1870	1938	Show oil	1880-1883	
Big Injun			1938	2040			
Total Depth				2117			

