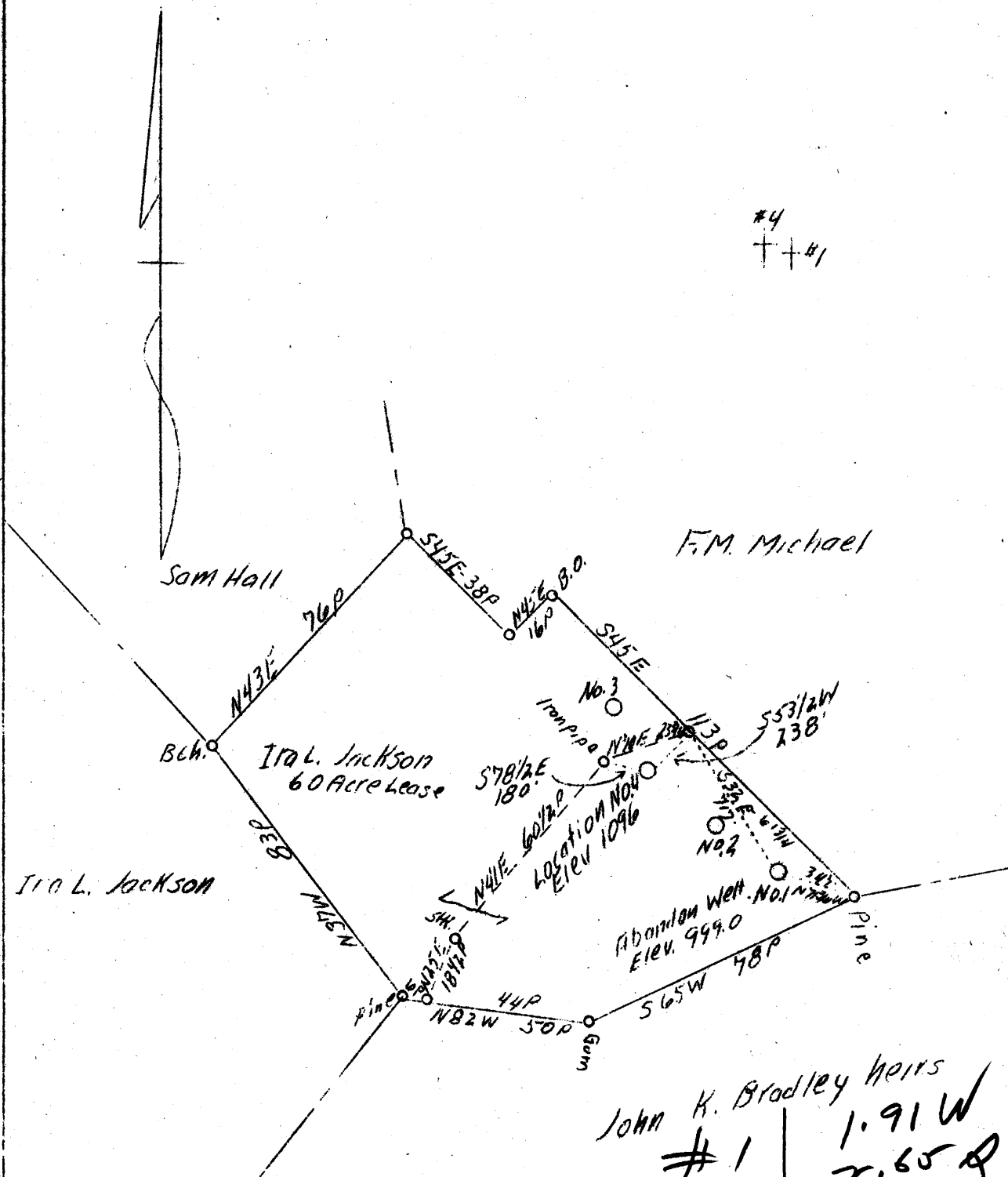


LATITUDE 39° 10'

LONGITUDE 81° 10'



John K. Bradley heirs	
# 1	1.91 W 2.65 Q
# 4	2.1 W 2.6 Q

New location #4
ABD. #1

AUG - 8 1939

Company R. H. & R. Oil & Gas Co.
 Address 1/4 Dr. E. C. Hartman
 Market St., Parkersburg, W.Va.
 Farm Ira L. Jackson
 Acres 60
 Well (Farm) No. 1 and 4
 Elevation (SL) #4-1096.0 #1-997.0
 Quadrangle Harrisville, W. Va.
 County Ritchie
 District Grant
 Engineer O. W. Barnhart
 Eng. Reg. No. Surveyor
 Date July 27, 1939
 Scale 1" - 40 poles

WC

STATE OF WEST VIRGINIA
 Department of Mines
 OIL & GAS DIVISION
 Charleston

WELL LOCATION MAP

File No. PR-739-D-#4
PR-413-A-#1

x Denotes location of well on U. S. Topographic Maps, scale 1 to 62,500, latitude and longitude lines being represented by border lines as shown.

- Denotes one inch spaces on border line of original tracing.