

New Location...
 Drill Deeper.....
 Abandonment.....

Company W.R. Baker
 Address Beatrice W.Va.
 Farm A.E. Lamp
 Tract _____ Acres 50 3/4 Lease No. _____
 Well (Farm) No. 143 Serial No. _____
 Elevation (Spirit Level) #1. 865. #3. 1088.
 Quadrangle Harrisville
 County Ritchie District Murphy
 Engineer A.H. Westfall
 Engineer's Registration No. Deputy County Surveyor
 File No. _____ Drawing No. _____
 Date Sep 5 1939 Scale 1" = 20 Poles

STATE OF WEST VIRGINIA
 DEPARTMENT OF MINES
 OIL AND GAS DIVISION
 CHARLESTON

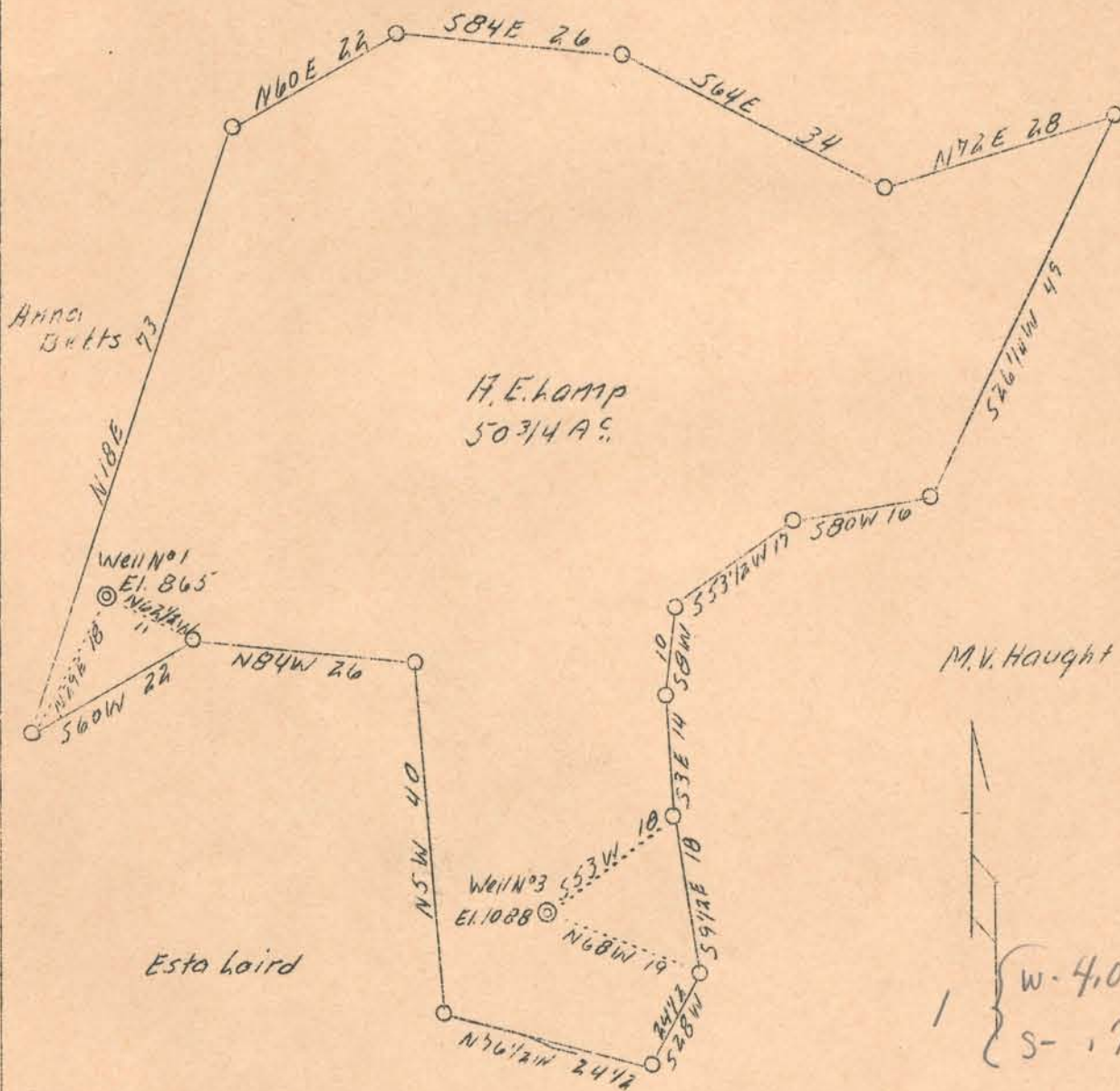
WELL LOCATION MAP
 FILE NO. RIT-419-420-A

Rit 568 #6 #1 #3
 + Denotes location of well on United States Topographic Maps, scale 1 to 62,500, latitude and longitude lines being represented by border lines as shown.

- Denotes one inch spaces on border line of original tracing.

++
#1 #3

A. E. Lamp



1 { w. 4.02
s. .79

3 { w. 3.88
s. .84

A.B.D.

Company	W. R. Baker
Address	Beatrice, W. Va.
Farm	A. E. Lamp
Acres	50-3/4
Well (Farm) No.	1 and 3
Elevation (SL)	#1 865 - #3 1088
Quadrangle	Harrisville S.
County	Ritchie
District	Murphy
Engineer	A. K. Westfall
Eng. Reg. No.	Deputy County Surveyor
Date	Sept. 5, 1939
Scale	1" - 20 poles

STATE OF WEST VIRGINIA
Department of Mines
OIL & GAS DIVISION
Charleston

WELL LOCATION MAP

File No. Rit-419 & 420-A

x Denotes location of well on U. S. Topographic Maps, scale 1 to 62,500, latitude and longitude lines being represented by border lines as shown.

- Denotes one inch spaces on border line of original tracing.