

Company W. R. Baker

Address Beatrice, W. Va.

Farm A. E. Lamp

Tract \_\_\_\_\_ Acres 169 Lease No. \_\_\_\_\_

Well (Farm) No. 1-2-3-5-6-10 Serial No. \_\_\_\_\_

Elevation (Spirit Level) 805-832-697-871-848-831

Quadrangle Harrisville

County Ritchie District Murphy

Engineer A. K. Westfall

Engineer's Registration No. Co. Surveyor, Ritchie Co.

File No. \_\_\_\_\_ Drawing No. \_\_\_\_\_

Date April 12 1941 Scale 1" = 30 Poles

STATE OF WEST VIRGINIA  
DEPARTMENT OF MINES  
OIL AND GAS DIVISION  
CHARLESTON

WELL LOCATION MAP  
FILE NO. RT-543A-545A INC  
1-5-10  
(6) RT-567A

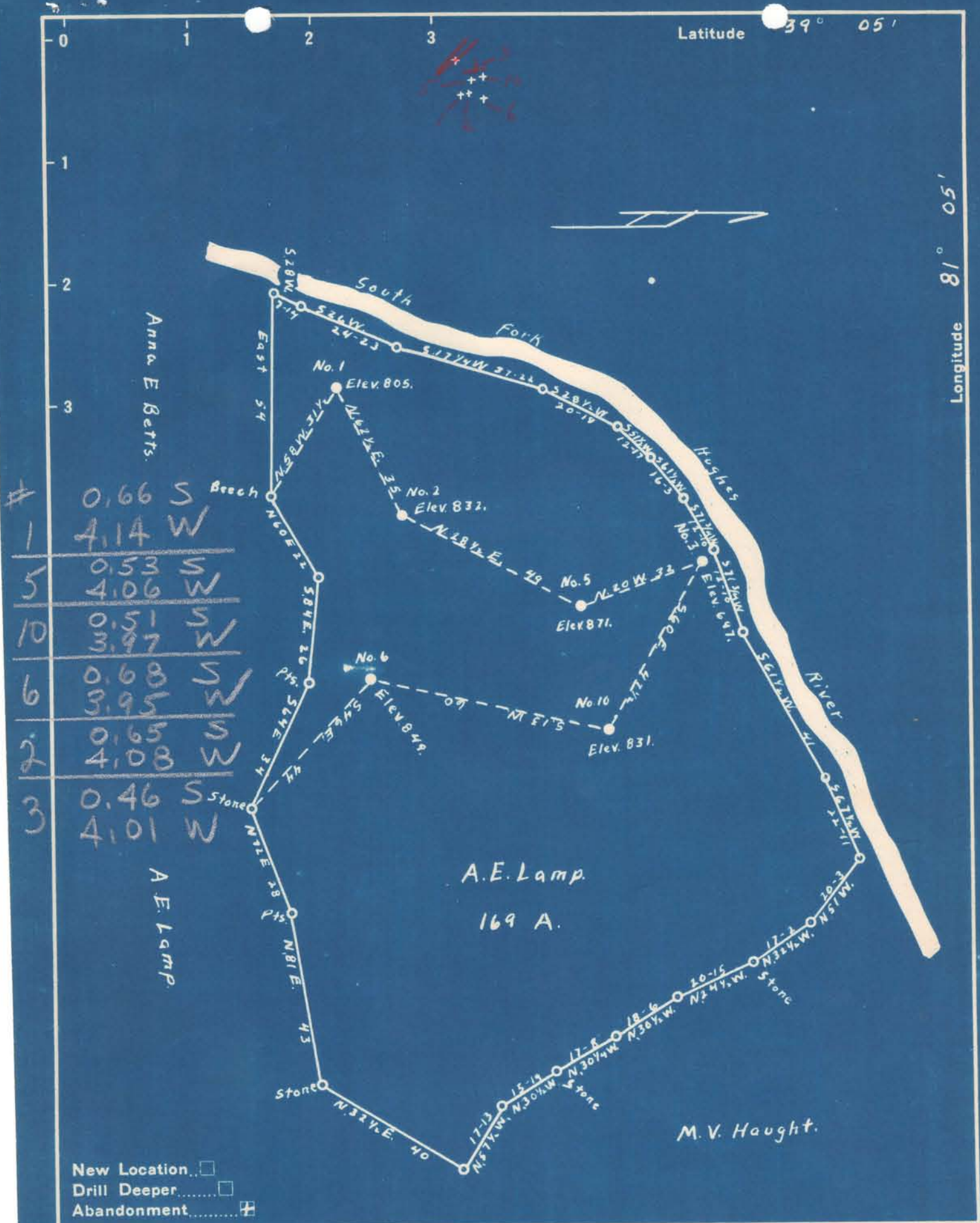
+ Denotes location of well on United States Topographic Maps, scale 1 to 62,500, latitude and longitude lines being represented by border lines as shown.

- Denotes one inch spaces on border line of original tracing.



Latitude 39° 05'

Longitude 81° 05'



New Location...   
 Drill Deeper...   
 Abandonment...

Company W. R. Baker  
 Address Beatrice, W. Va.  
 Farm A. E. Lamp  
 Tract \_\_\_\_\_ Acres 169 Lease No. 50  
 Well (Farm) No. 1-2-3-5-6-10 Serial No. \_\_\_\_\_  
 Elevation (Spirit Level) 805-832-697-871-849-831  
 Quadrangle Harrisville  
 County Ritchie District Murphy  
 Engineer A. K. Westfall  
 Engineer's Registration No. Co. Surveyor, Ritchie Co.  
 File No. \_\_\_\_\_ Drawing No. \_\_\_\_\_  
 Date April, 15 1941 Scale 1" = 30 Poles

STATE OF WEST VIRGINIA  
 DEPARTMENT OF MINES  
 OIL AND GAS DIVISION  
 CHARLESTON

**WELL LOCATION MAP**  
 FILE NO. RT-543A-545A INC  
1-5-10  
(6) RT-567A

+ Denotes location of well on United States Topographic Maps, scale 1 to 62,500, latitude and longitude lines being represented by border lines as shown.

- Denotes one inch spaces on border line of original tracing.