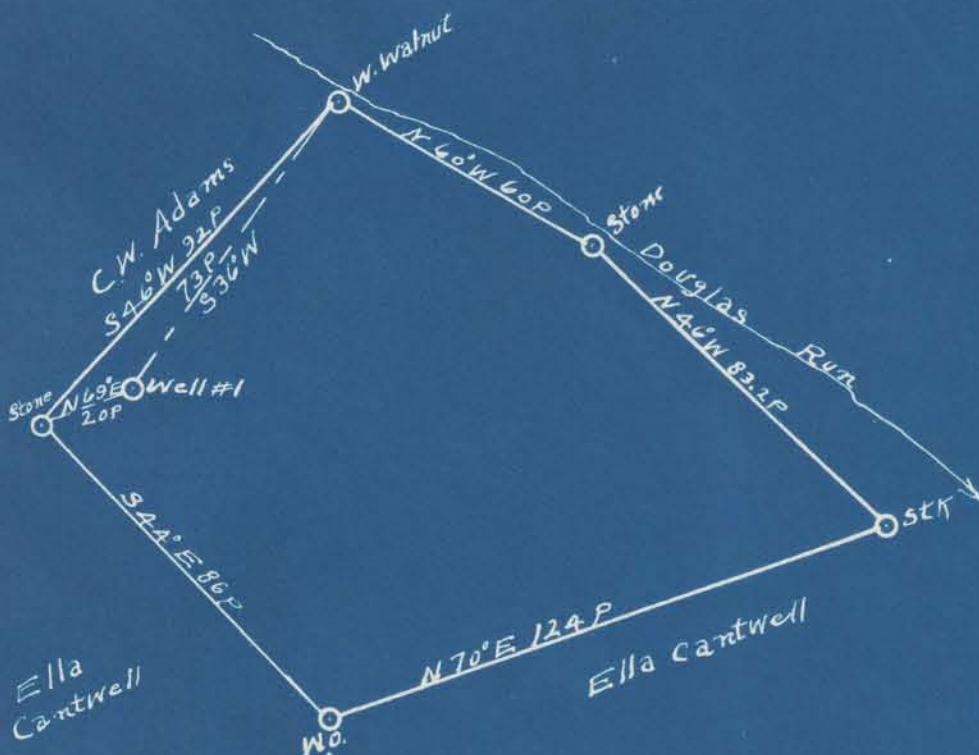


Latitude 39° 20'

Longitude 81° 10'



2.85 S  
0.39 W

New Location...   
 Drill Deeper.....   
 Abandonment.....

Company Smith, Piersel, Feick + Coss  
 Address R.F.D. No 2, Walker, WVA.  
 Farm Robert Templeton Hrs.  
 Tract \_\_\_\_\_ Acres 70 Lease No. \_\_\_\_\_  
 Well (Farm) No. 1 Serial No. SW  
 Elevation (Spirit Level) 953'  
 Quadrangle St Marys  
 County Ritchie District Grant  
 Engineer J.E. Anderson County Surveyor  
 Engineer's Registration No. Wood County  
 File No. \_\_\_\_\_ Drawing No. \_\_\_\_\_  
 Date May 7 1941 Scale 1 in = 40 Poles

STATE OF WEST VIRGINIA  
 DEPARTMENT OF MINES  
 OIL AND GAS DIVISION  
 CHARLESTON

WELL LOCATION MAP  
 FILE NO. RIT-560A

+ Denotes location of well on United States Topographic Maps, scale 1 to 62,500, latitude and longitude lines being represented by border lines as shown.

- Denotes one inch spaces on border line of original tracing.