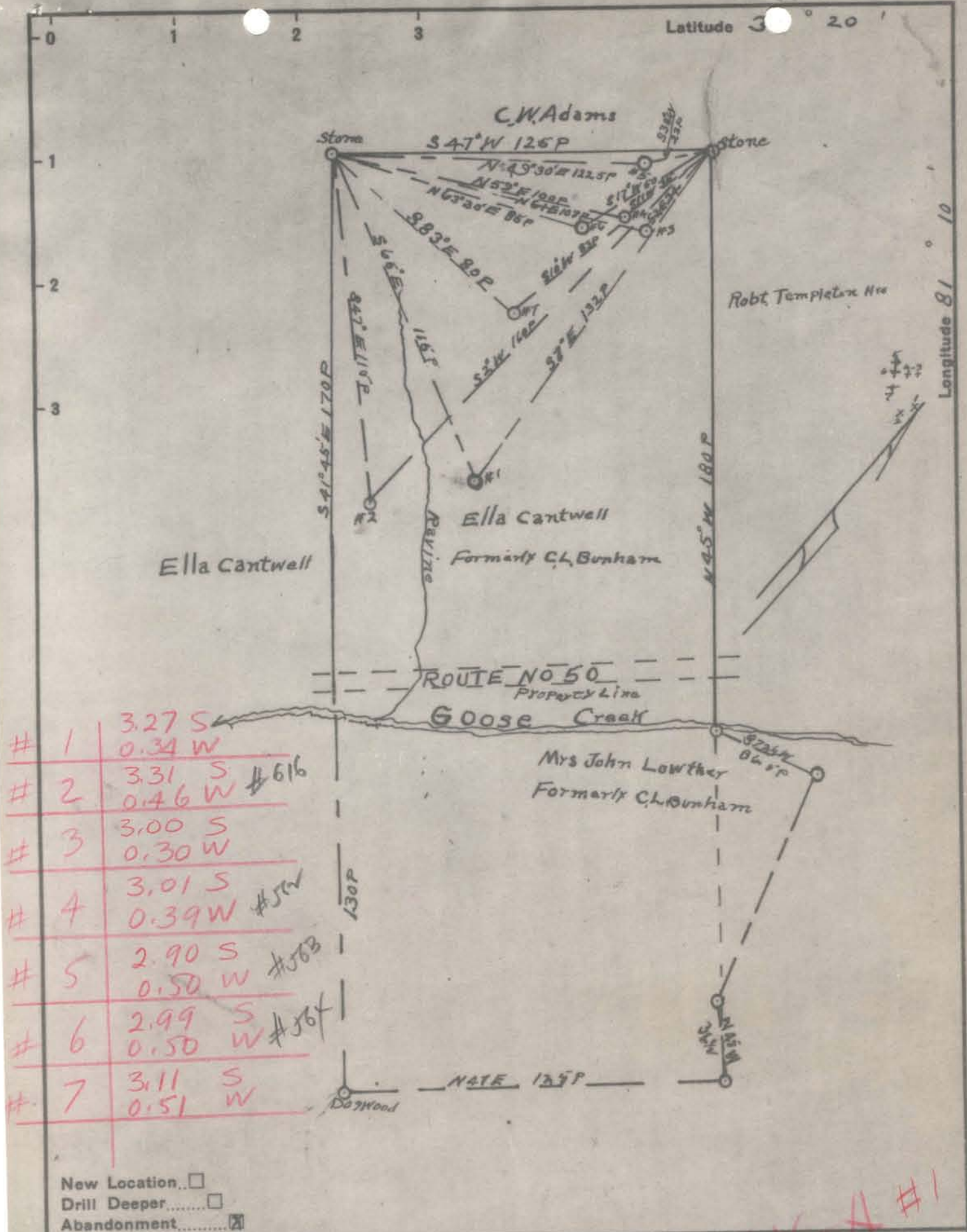


Latitude 37° 20'

Longitude 81° 10'



# 1	3.27 S	0.34 W
# 2	3.31 S	0.46 W #616
# 3	3.00 S	0.30 W
# 4	3.01 S	0.39 W #57W
# 5	2.90 S	0.50 W #56B
# 6	2.99 S	0.50 W #56X
# 7	3.11 S	0.51 W

- New Location...
- Drill Deeper...
- Abandonment...

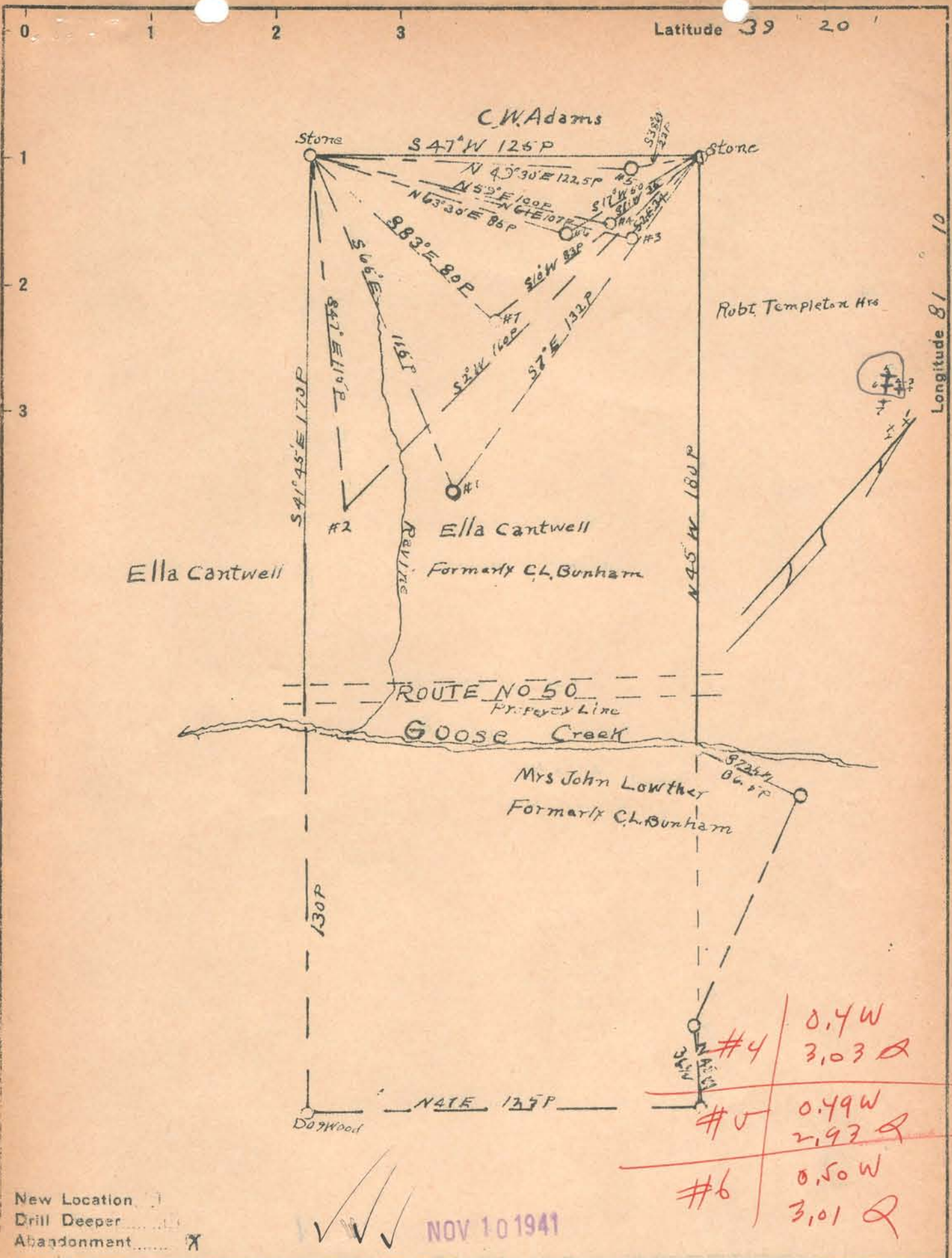
Company Smith, Pierson, Feick & Co.
 Address R.F.D. #2 Walker, W.Va.
 Farm Ella Cantwell
 Tract 2 Acres 136 Lease No. SW
 Wells (Farm) No. 1-7 inches Serial No. _____
 Elevation (Spirit Level) 522 720 1100 1120 2100 1030 900
 Quadrangle St Marys
 County Ritchie District Grant
 Engineer J.E. Anderson County Surveyor
 Engineer's Registration No. Wood County
 File No. _____ Drawing No. _____
 Date May 7 1941 Scale 1 in = 40 Poles

STATE OF WEST VIRGINIA
 DEPARTMENT OF MINES
 OIL AND GAS DIVISION
 CHARLESTON

WELL LOCATION MAP
 FILE NO. RIT-562 A #4

+ Denotes location of well on United States Topographic Maps, scale 1 to 62,500, latitude and longitude lines being represented by border lines as shown.

- Denotes one inch spaces on border line of original tracing.



New Location
 Drill Deeper
 Abandonment

NOV 10 1941

#4	0.4 W	3.03 Q
#5	0.49 W	2.93 Q
#6	0.50 W	3.01 Q

Company Smith, Piersol, Feick & Coss
 Address RED. #2 Walker, WVA.
 Farm Ella Cantwell (Robt. Templeton Hrs.)
 Tract 2 Acres 134 Lease No. _____
 Wells (Farm) No. 1 to 7 inclusive Serial No. _____
 Elevation (Spirit Level) 520 930 1100 1120 1100 1080 920
 Quadrangle St Marys
 County Ritshie District Grant
 Engineer J.E. Anderson County Surveyor
 Engineer's Registration No. Wood County
 File No. _____ Drawing No. _____
 Date May 7, 1941 Scale 1 in = 40 Poles

STATE OF WEST VIRGINIA
 DEPARTMENT OF MINES
 OIL AND GAS DIVISION
 CHARLESTON

WELL LOCATION MAP
 FILE NO. RIT-562 A to 564 A
4 to 6 INC INC

+ Denotes location of well on United States Topographic Maps, scale 1 to 62,500, latitude and longitude lines being represented by border lines as shown.
 - Denotes one inch spaces on border line of original tracing.

ELLA CANTWELL NOS. 4, 5 & 6 — SMITH, PIERSON, FEICK & COSS — RIT-562-A, INC