

Company W. R. Baker
 Address Beatrice, W. Va.
 Farm A. E. Lamp
 Tract _____ Acres 169 Lease No. _____
 Well (Farm) No. 1-2-3-5-6-10 Serial No. _____
 Elevation (Spirit Level) 805-832-697-871-849-831
 Quadrangle Harrisville
 County Ritchie District Murphy
 Engineer A. K. Westfall
 Engineer's Registration No. Co. Surveyor, Ritchie Co.
 File No _____ Drawing No. _____
 Date April 12 1941 Scale 1" = 30 Poles

STATE OF WEST VIRGINIA
 DEPARTMENT OF MINES
 OIL AND GAS DIVISION
 CHARLESTON

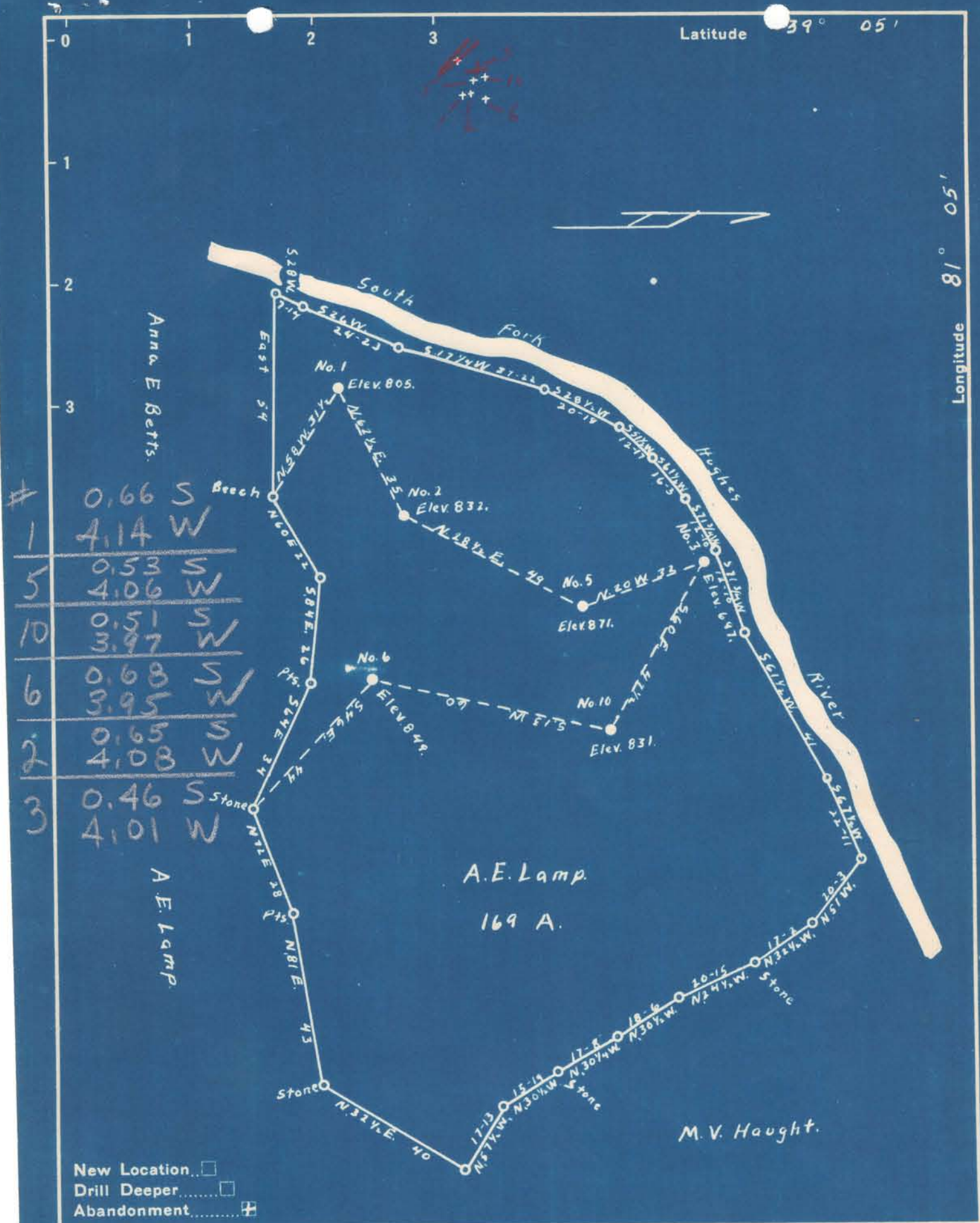
WELL LOCATION MAP
 FILE NO. RT-543A-545A INC
1-5-10
(6) RT-567A

+ Denotes location of well on United States Topographic Maps, scale 1 to 62,500, latitude and longitude lines being represented by border lines as shown.

- Denotes one inch spaces on border line of original tracing.

Latitude 39° 05'

Longitude 81° 05'



Company W. R. Baker
 Address Beatrice, W. Va.
 Farm A. E. Lamp
 Tract _____ Acres 169 Lease No. 50
 Well (Farm) No. 1-2-3-5-6-10 Serial No. _____
 Elevation (Spirit Level) 805-832-697-871-849-831
 Quadrangle Harrisville
 County Ritchie District Murphy
 Engineer A. K. Westfall
 Engineer's Registration No. Co. Surveyor, Ritchie Co.
 File No. April 15, 1941 Drawing No. _____
 Date April, 15 1941 Scale 1" = 30 Poles

STATE OF WEST VIRGINIA
 DEPARTMENT OF MINES
 OIL AND GAS DIVISION
 CHARLESTON

WELL LOCATION MAP
 FILE NO. RT-543A-545A INC
1-3-10
(6) RT-567A

+ Denotes location of well on United States Topographic Maps, scale 1 to 62,500, latitude and longitude lines being represented by border lines as shown.

- Denotes one inch spaces on border line of original tracing.