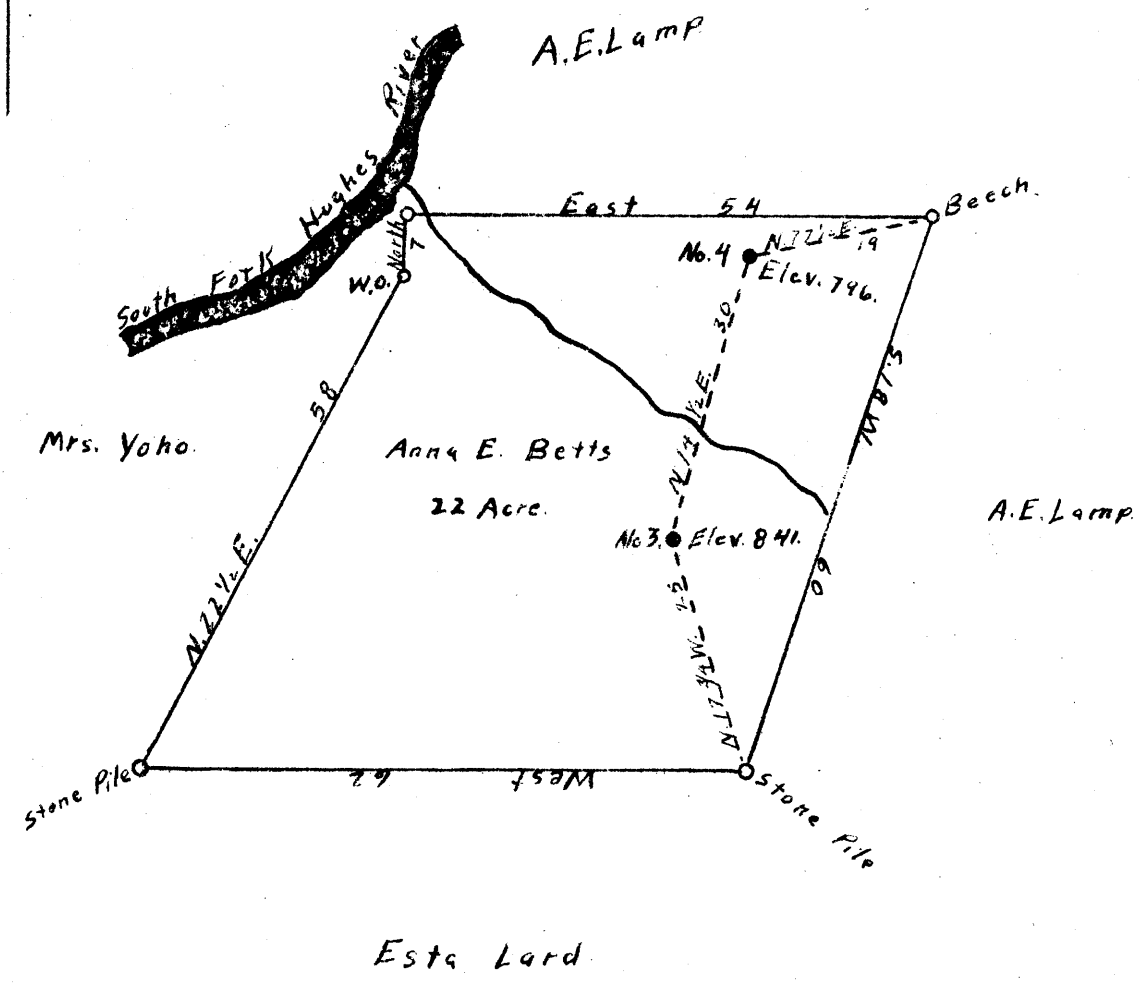


Latitude 39 05'

Longitude 81 05'



0.54S
4.38W

0.43S
4.3W

New Location
 Drill Deeper
 Abandonment

Company W. R. Baker
 Address Beatrice, W. Va.
 Farm Anna E. Betts
 Tract _____ Acres 22 Lease No. _____
 Well (Farm) No. 3-4- Serial No. _____
 Elevation (Spirit Level) 841 - 796
 Quadrangle Harrisville
 County Ritchie District Murphy
 Engineer A. K. Westfall
 Engineer's Registration No. Co. Surveyor, Ritchie Co.
 File No. _____ Drawing No. _____
 Date April 15, 1941 Scale 1" = 20 poles

STATE OF WEST VIRGINIA
 DEPARTMENT OF MINES
 OIL AND GAS DIVISION
 CHARLESTON

WELL LOCATION MAP
 FILE NO. Rit-580-A-Well #3
Rit-581-A-Well #4

+ Denotes location of well on United States Topographic Maps, scale 1 to 62,500, latitude and longitude lines being represented by border lines as shown.
 - Denotes one inch spaces on border line of original tracing.