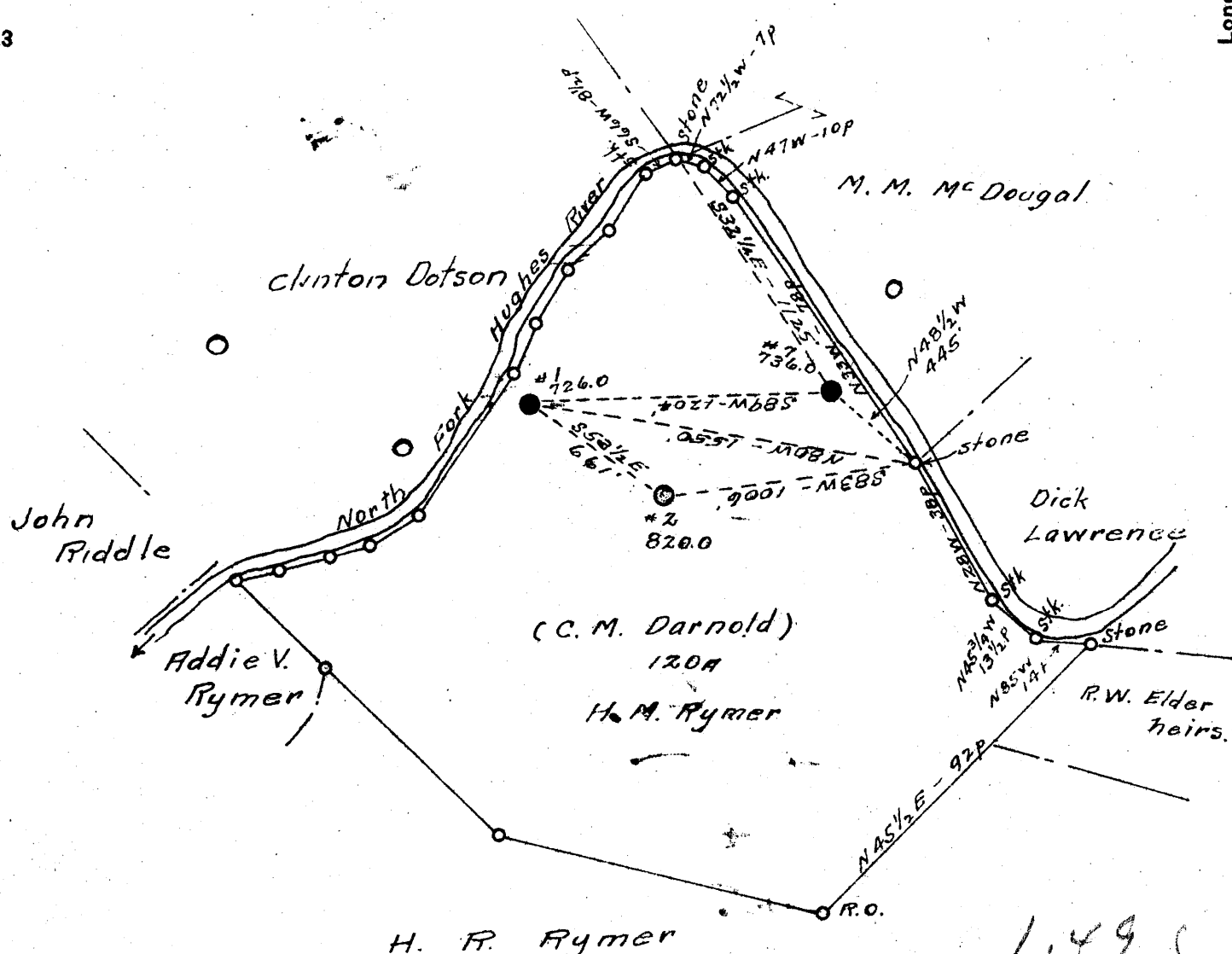


Latitude 39° 15'

Longitude 81° 00'

#1 + #7



- New Location
- Drill Deeper
- Abandonment

1.495  
1.100  
1.495  
0.93W

Company Reno Oil Co.  
 Address Sistersville, W. Va.  
 Farm C. M. Darnold  
 Tract      Acres 120 Lease No.       
 Well (Farm) No. 1 + 7 + 7 Serial No.       
 Elevation (Spirit Level) #1-726 #2-820 7-736.0  
 Quadrangle Harrisville  
 County Fitchie District Union  
 Engineer O. W. Barnhart  
 Engineer's Registration No. Surveyor  
 File No.      Drawing No.       
 Date Sept. 25, 1941 Scale 1" = 40 poles

STATE OF WEST VIRGINIA  
 DEPARTMENT OF MINES  
 OIL AND GAS DIVISION  
 CHARLESTON

**WELL LOCATION MAP**  
 FILE NO. RIT-584-A-#1

+ Denotes location of well on United States Topographic Maps, scale 1 to 62,500, latitude and longitude lines being represented by border lines as shown.  
 - Denotes one inch spaces on border line of original tracing.