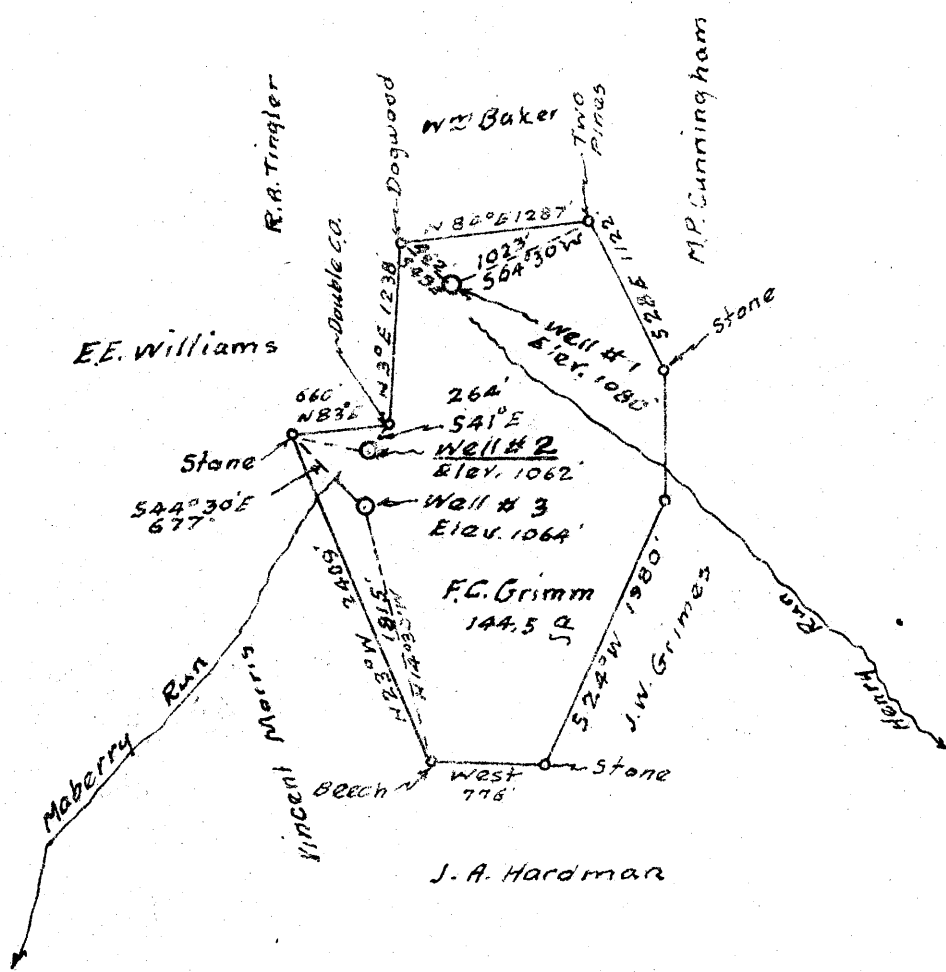


3.44 S
2.46 W

3.73 S
2.64 W

3.79 S
2.60 W

Longitude



(Abandonment) ✓

Company Godfrey L. Cabot, Inc.
 Address Grantsville, W. Va.
 Farm F.C. Grimm Elev. 1062'
 Tract One Acres 144.5 Lease No. _____
 Well (Farm) No. 2 Serial No. 693
 Quadrangle Harrisville
 County Ritchie
 District Murphy
 Engineer Logan McDonald
 Engineer's Registration No. 610
 File No. _____ Drawing No. _____
 Date 11-5-42 Scale 1" = 1320'

STATE OF WEST VIRGINIA
 DEPARTMENT OF MINES
 OIL AND GAS DIVISION
 CHARLESTON

WELL LOCATION MAP
 FILE NO. Rit-658-A

+ Denotes location of well on United States Topographic Maps, scale 1 to 62,500, latitude and longitude lines being represented by border lines as shown.
 - Denotes one inch spaces on border-line of original tracing.