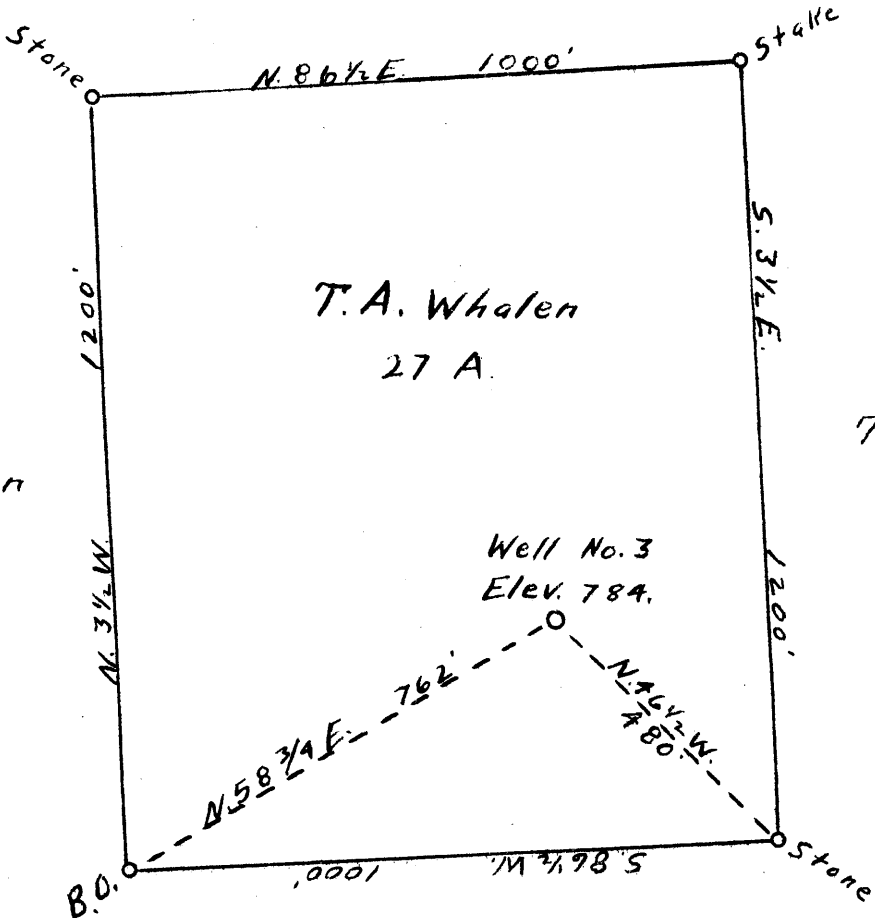


\$

T. A. Whalen



T. A. Whalen

T. A. Whalen
27 A.

T. A. Whalen

Well No. 3
Elev. 784.

3.15
3.9W

T. A. Whalen.

New Location
 Drill Deeper
 Abandonment ✓

Company Newman & Davitt
 Address Stockport, Ohio
 Farm T. A. Whalen
 Tract _____ Acres 27 Lease No. _____
 Well (Farm) No. 3 Serial No. _____
 Elevation (Spirit Level) 784.
 Quadrangle Harrisville
 County Ritchie District Grant
 Engineer A. K. Westfall
 Engineer's Registration No. County Surveyor
 File No. _____ Drawing No. _____
 Date Nov 20, 1942 Scale 1" = 300'

STATE OF WEST VIRGINIA
 DEPARTMENT OF MINES
 OIL AND GAS DIVISION
 CHARLESTON

WELL LOCATION MAP

FILE NO. Rit-662-A

+ Denotes location of well on United States Topographic Maps, scale 1 to 62,500, latitude and longitude lines being represented by border lines as shown.
 - Denotes one inch spaces on border line of original tracing.