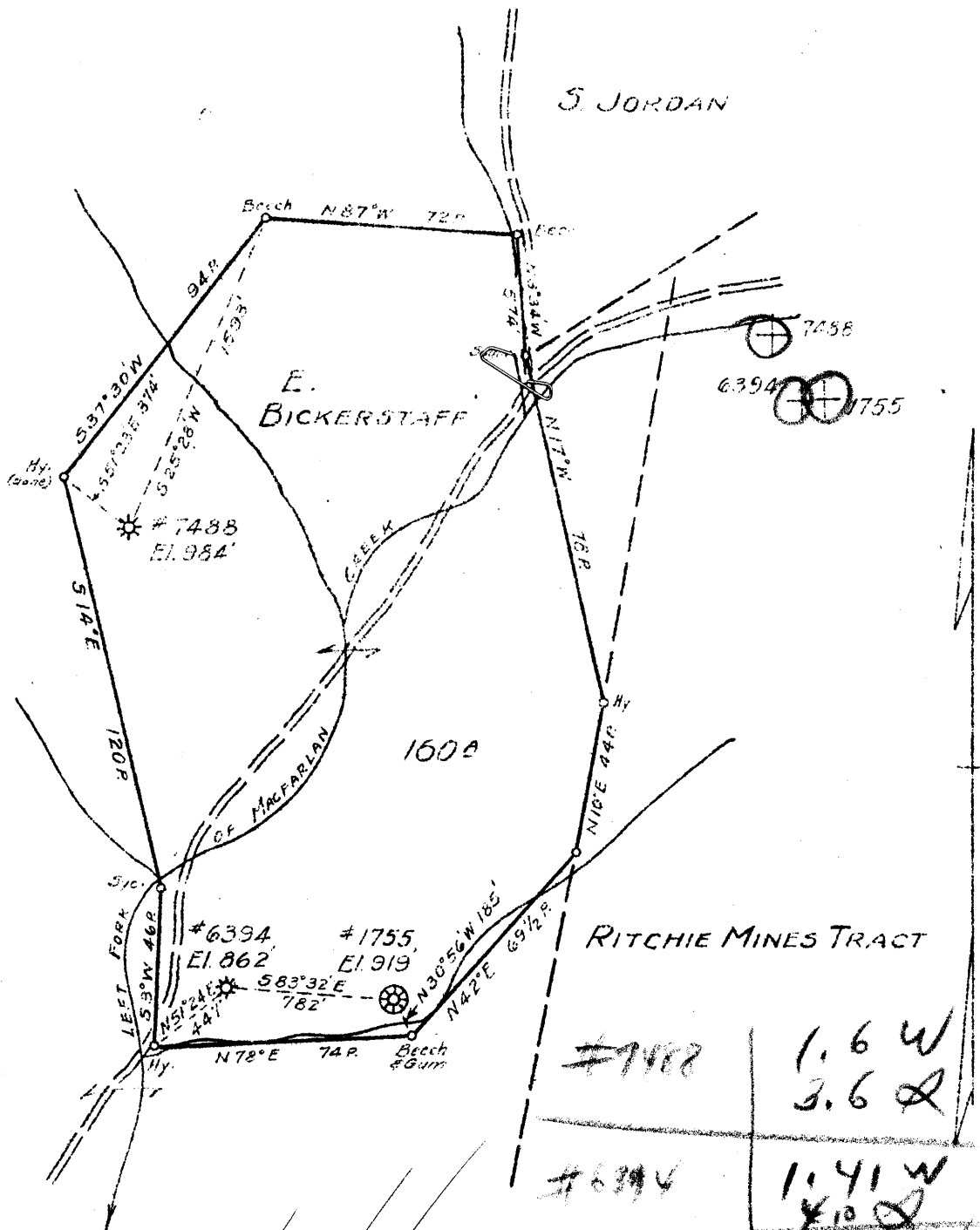


4-10



M.S. W. N

RITCHIE MINES TRACT

New Location  
 Drill Deeper  
 Abandonment X 6394

NOV - 6 1945

Map Sh. 89 Sq. 5-23 W-32 F.B. 777 P. 31-32  
 506 P. 27-28

#7488	1.6 W 3.6 Q
#6394	1.41 W 4.0 Q
#1755	1.28 W 4.01 Q

Company HOPE NATURAL GAS CO.  
 Address CLARKSBURG, W. VA.  
 Farm E. BICKERSTAFF  
 Tract \_\_\_\_\_ Acres 160 Lease No. 20284  
 Well (Farm) No. \_\_\_\_\_ Serial No. AS SHOWN  
 Elevation (Spirit Level) AS SHOWN  
 Quadrangle HARRISVILLE  
 County RITCHIE District MURPHY  
 Engineer W.M. Bowers  
 Engineer's Registration No. 900  
 File No. \_\_\_\_\_ Drawing No. \_\_\_\_\_  
 Date 10-19-45 Scale 1"=800'

STATE OF WEST VIRGINIA  
 DEPARTMENT OF MINES  
 OIL AND GAS DIVISION  
 CHARLESTON

WELL LOCATION MAP  
 FILE NO. Rit-741-A

+ Denotes location of well on United States Topographic Maps, scale 1 to 62,500, latitude and longitude lines being represented by border lines as shown.  
 - Denotes one inch spaces on border line of original tracing.



STATE OF WEST VIRGINIA  
DEPARTMENT OF MINES  
OIL AND GAS DIVISION

665

WELL RECORD

Oil or Gas Well (KIND)

Permit No. 741-A

Company Hope Natural Gas Company.  
Address 445 West Main St. Clarksburg, W.Va.  
Farm E. Bickerstaff Acres 160  
Location (waters) \_\_\_\_\_  
Well No. 6394 Elev. 862  
District Murphy County Ritchie  
The surface of tract is owned in fee by \_\_\_\_\_  
Address \_\_\_\_\_  
Mineral rights are owned by \_\_\_\_\_  
Address \_\_\_\_\_  
Drilling commenced May 12, 1923  
Drilling completed July 21, 1923  
Date Shot \_\_\_\_\_ From \_\_\_\_\_ To \_\_\_\_\_  
With Purchased  
Open Flow \_\_\_\_\_ /10ths Water in \_\_\_\_\_ Inch  
\_\_\_\_\_ /10ths Merc. in \_\_\_\_\_ Inch  
Volume \_\_\_\_\_ Cu. Ft.  
Rock Pressure \_\_\_\_\_ lbs. \_\_\_\_\_ hrs.  
Oil \_\_\_\_\_ bbls., 1st 24 hrs.  
Fresh water \_\_\_\_\_ feet \_\_\_\_\_ feet  
Salt water \_\_\_\_\_ feet \_\_\_\_\_ feet

Casing and Tubing	Used in Drilling	Left in Well	Packers
Size			
16			Kind of Packer
13			
10	375	36	Size of
8 1/4	953	953	
6 3/8	1486	1486	Depth set
5 3/16			
3			Perf. top
2	1954	1954	Perf. bottom
Liners Used			Perf. top
			Perf. bottom

CASING CEMENTED **not cemented** SIZE \_\_\_\_\_ No. Ft. \_\_\_\_\_ Date \_\_\_\_\_

**none recorded**  
COAL WAS ENCOUNTERED AT \_\_\_\_\_ FEET \_\_\_\_\_ INCHES  
\_\_\_\_\_ FEET \_\_\_\_\_ INCHES FEET \_\_\_\_\_ INCHES  
\_\_\_\_\_ FEET \_\_\_\_\_ INCHES FEET \_\_\_\_\_ INCHES

Formation	Color	Hard or Soft	Top	Bottom	Oil, Gas or Water	Depth Found	Remarks
Little Dunkard			810	815			
Big Dunkard			920	965			
Sand shell			1486	1645	show oil & gas	1658	
Sand			1645	1724			
Big Lime			1724	1800			
Big Injun			1800	1918	gas	1870- 1880	
Total depth				1954			