

#5502	2.47	S
	1.10	W
#5680	2.63	S
	0.88	W

965A - #5502

New Location
 Drill Deeper
 Abandonment 5680

MAP SH. 67-59 S16 W18 FB. 854 P. 38-9

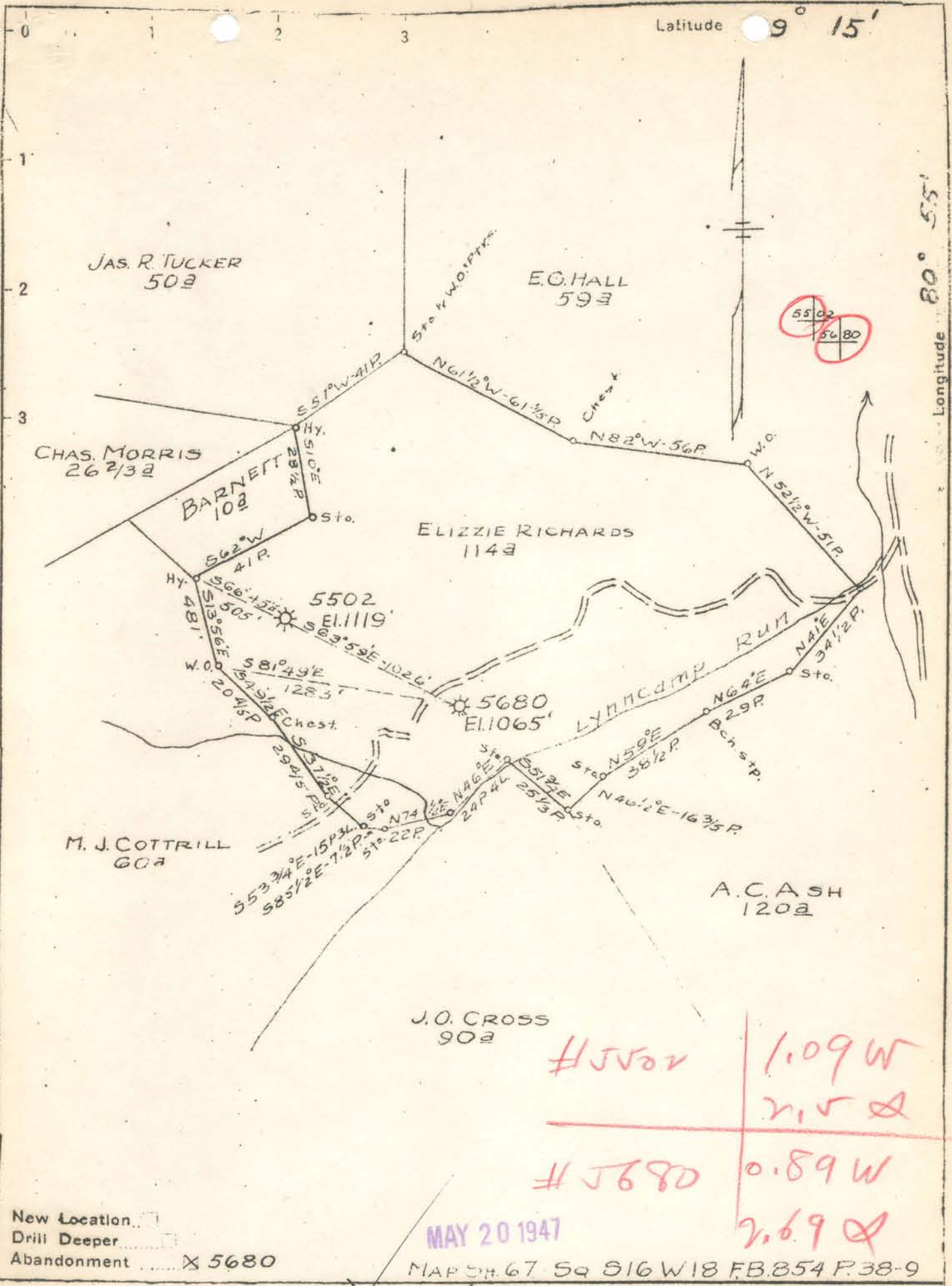
Company HOPE NATURAL GAS CO.
 Address CLARKSBURG, W. VA.
 Farm ELIZZIE RICHARDS
 Tract _____ Acres 114 Lease No. 23361
 Well (Farm) No. _____ Serial No. See Above
 Elevation (Spirit Level) See Above
 Quadrangle HOLBROOK
 County RICHIE District CLAY
 Engineer W. M. Bowers
 Engineer's Registration No. 900
 File No. _____ Drawing No. _____
 Date 5-5-47 Scale 1" = 40 P.

STATE OF WEST VIRGINIA
 DEPARTMENT OF MINES
 OIL AND GAS DIVISION
 CHARLESTON

WELL LOCATION MAP
 FILE NO. RIT-783-A
WELL #5680

+ Denotes location of well on United States Topographic Maps, scale 1 to 62,500, latitude and longitude lines being represented by border lines as shown.
 - Denotes one inch spaces on border line of original tracing.

"IMPERIAL" TRACING CLOTH
 K & E CO., N. Y.



New Location.
 Drill Deeper.
 Abandonment. 5680

MAY 20 1947
 MAP SH. 67. SQ. S16 W18 FB. 854 P. 38-9

Company HOPE NATURAL GAS CO.
 Address CLARKSBURG, W. VA.
 Farm ELIZZIE RICHARDS
 Tract _____ Acres 114 Lease No. 23361
 Well (Farm) No. _____ Serial No. See Above
 Elevation (Spirit Level) See Above
 Quadrangle HOLBROOK
 County RICHIE District CLAY
 Engineer W. M. Bowers
 Engineer's Registration No. 900
 File No. _____ Drawing No. _____
 Date 5-5-47 Scale 1" = 40 P.

STATE OF WEST VIRGINIA
 DEPARTMENT OF MINES
 OIL AND GAS DIVISION
 CHARLESTON

WELL LOCATION MAP
 FILE NO. RIT-783-A
 WELL # 5680

+ Denotes location of well on United States Topographic Maps, scale 1 to 62,500, latitude and longitude lines being represented by border lines as shown.
 - Denotes one inch spaces on border line of original tracing.