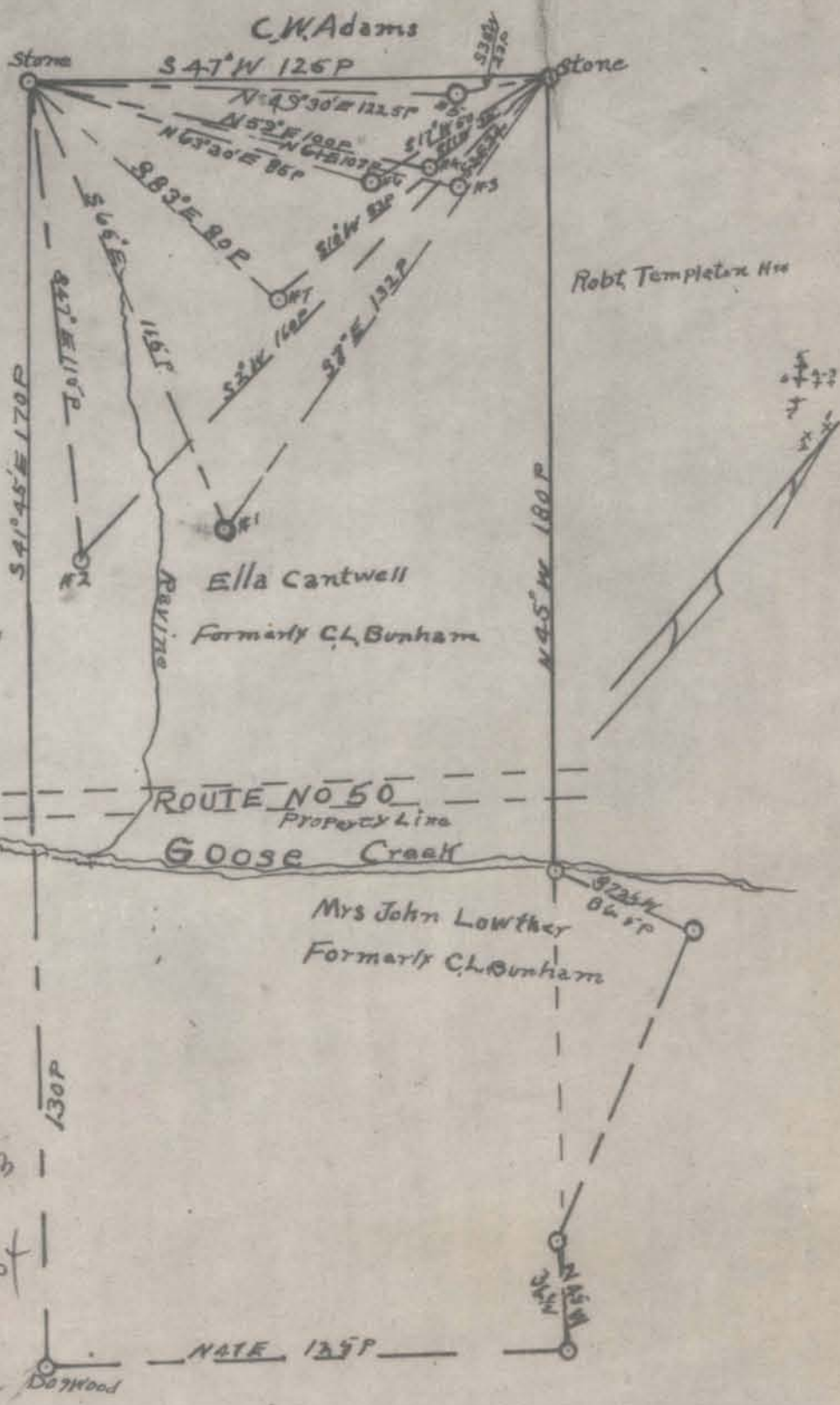


Latitude 37° 20'

Longitude 81° 10'



# 1	3.27 S	0.34 W
# 2	3.31 S	0.46 W #616
# 3	3.00 S	0.30 W
# 4	3.01 S	0.39 W #57W
# 5	2.90 S	0.50 W #56B
# 6	2.99 S	0.50 W #56X
# 7	3.11 S	0.51 W

- New Location
- Drill Deeper
- Abandonment

Company Smith, Pierson, Feick & Co's
 Address R.F.D. #2 Walker, W.Va.
 Farm Ella Cantwell
 Tract 2 Acres 136 Lease No. SW
 Wells (Farm) No. 1 to 7 Serial No. SW
 Elevation (Spirit Level) 511.25 513.10 514.95 516.80 518.65 520.50
 Quadrangle St Marys
 County Ritchie District Grant
 Engineer J.E. Anderson County Surveyor
 Engineer's Registration No. Wood County
 File No. _____ Drawing No. _____
 Date May 7, 1941 Scale 1 in = 40 Poles

STATE OF WEST VIRGINIA
 DEPARTMENT OF MINES
 OIL AND GAS DIVISION
 CHARLESTON

WELL LOCATION MAP
 FILE NO. RIT-562 A #1

+ Denotes location of well on United States Topographic Maps, scale 1 to 62,500, latitude and longitude lines being represented by border lines as shown.

- Denotes one inch spaces on border line of original tracing.