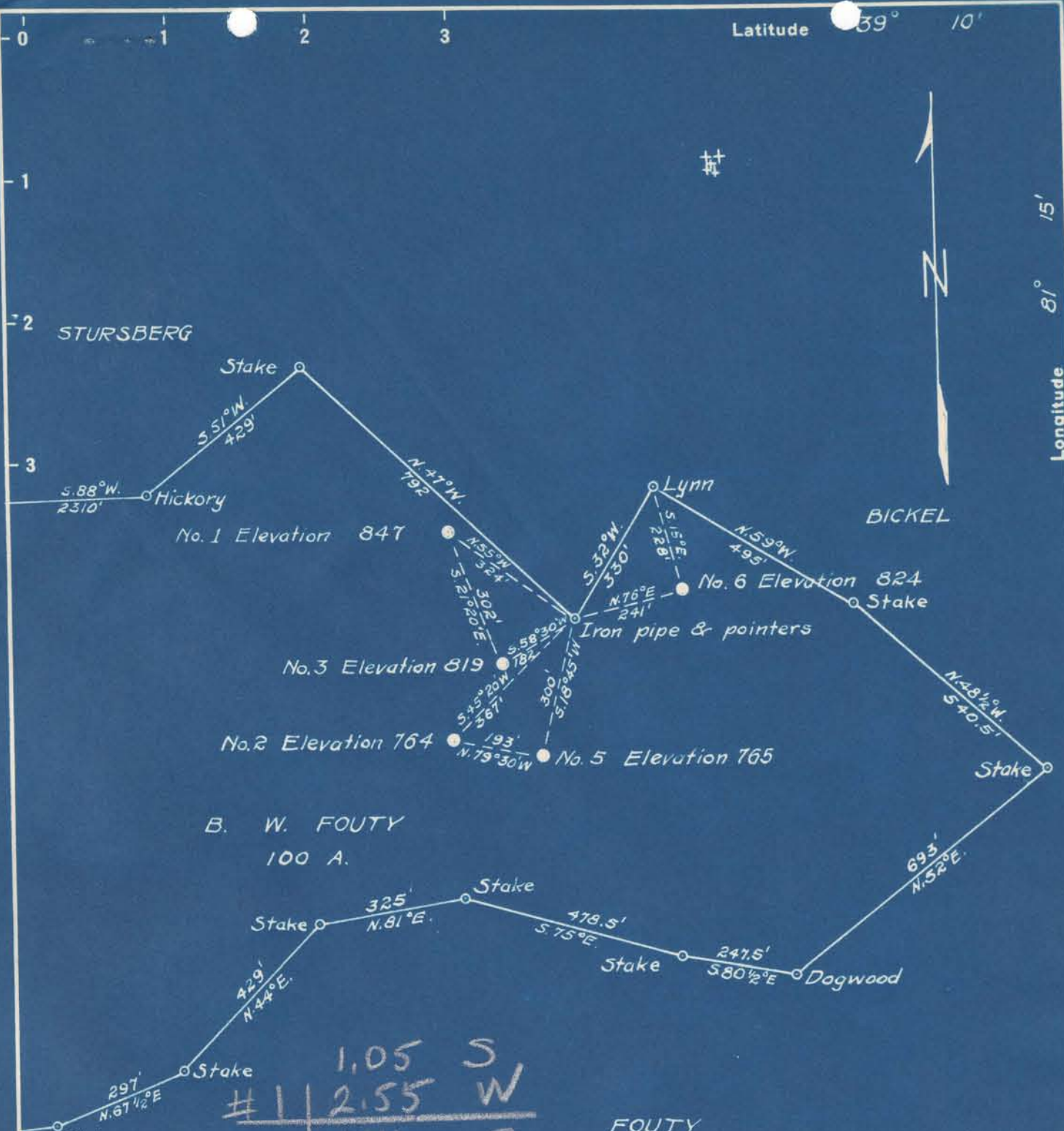


Latitude 39° 10'

Longitude 81° 15'



B. W. FOUTY  
100 A.

	1.05	S
#1	2.55	W
#2	1.16	S
	2.34	W
#3	1.11	S
	2.51	W
#5	1.18	S
	2.49	W
#6	1.06	S
	2.46	W

FOUTY

~~#3-896 A~~  
~~#6-900 X~~  
~~#1-424 A~~

New Location   
Drill Deeper   
Abandonment

Company P. O. BURG  
 Address CORNWALLIS, W. VA.  
 Farm B. W. FOUTY  
 Tract \_\_\_\_\_ Acres 100 Lease No. \_\_\_\_\_  
 Well (Farm) No. 1,2,3,5,6 Serial No. \_\_\_\_\_  
 Elevation (Spirit Level) 847, 764, 819, 765, 824  
 Quadrangle ELIZABETH  
 County RITCHIE District GRANT  
 Engineer B. F. RINEHART  
 Engineer's Registration No. 648  
 File No. \_\_\_\_\_ Drawing No. 701-GR  
 Date July 31, 1948 Scale 1 in. = 300 ft.

STATE OF WEST VIRGINIA  
DEPARTMENT OF MINES  
OIL AND GAS DIVISION  
CHARLESTON

WELL LOCATION MAP  
FILE NO. Rit-859-A-#2

+ Denotes location of well on United States Topographic Maps, scale 1 to 62,500, latitude and longitude lines being represented by border lines as shown.  
 - Denotes one inch spaces on border line of original tracing.