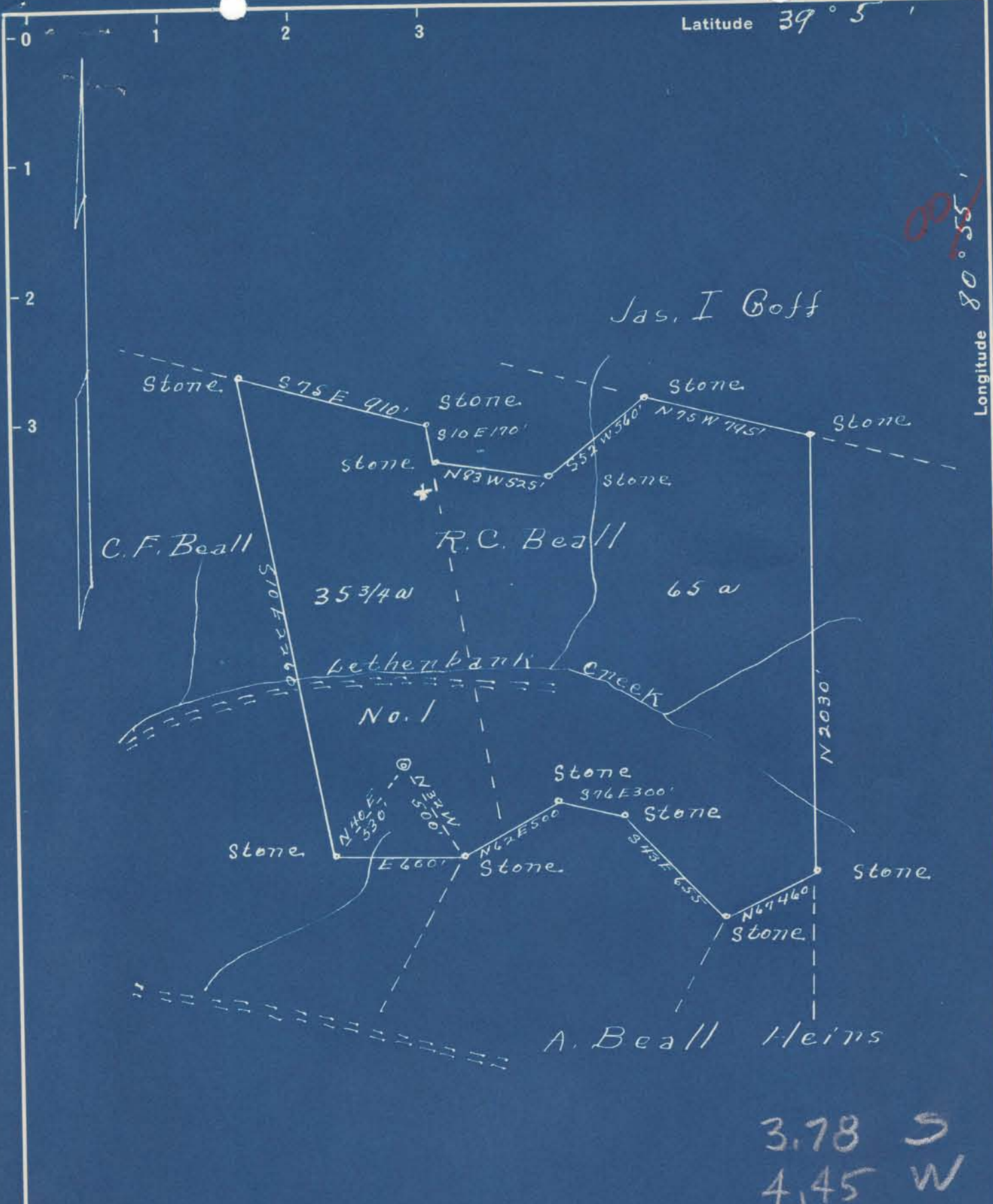


Latitude 39° 5'

Longitude 80° 55'



3.78 S  
4.45 W

New Location   
 Drill Deeper   
 Abandonment

Company Leonard Cain  
 Address Grantsville, W. Va.  
 Farm R.C. Beall  
 Tract \_\_\_\_\_ Acres 100 Lease No. \_\_\_\_\_  
 Well (Farm) No. 1 Serial No. \_\_\_\_\_  
 Elevation (Spirit Level) 1095'  
 Quadrangle Hannsville  
 County Triebie District Murphy  
 Engineer Donald W. Morris  
 Engineer's Registration No. 1653  
 File No. \_\_\_\_\_ Drawing No. \_\_\_\_\_  
 Date 9-12-49 Scale 1" = 600'

STATE OF WEST VIRGINIA  
 DEPARTMENT OF MINES  
 OIL AND GAS DIVISION  
 CHARLESTON

WELL LOCATION MAP  
 FILE NO. Rit-951-A

+ Denotes location of well on United States Topographic Maps, scale 1 to 62,500, latitude and longitude lines being represented by border lines as shown.

- Denotes one inch spaces on border line of original tracing.





840

STATE OF WEST VIRGINIA  
DEPARTMENT OF MINES  
OIL AND GAS DIVISION

WELL RECORD

Permit No. 951-A

Oil or Gas Well Oil  
(KIND)

|   |                   |                  |              |                       |
|---|-------------------|------------------|--------------|-----------------------|
| Company <u>Leonard Cain</u>                                   | Casing and Tubing | Used in Drilling | Left in Well | Packers               |
| Address <u>Grantsville, W. Va.</u>                            | Size              |                  |              |                       |
| Farm <u>R.C. Beall</u> Acres <u>100</u>                       | 16                |                  |              | Kind of Packer        |
| Location (waters) <u>Leatherbark Creek</u>                    | 13                |                  |              |                       |
| Well No. <u>1</u> Elev. <u>1095'</u>                          | 10                | <u>234</u>       |              | Size of               |
| District <u>Murphy</u> County <u>Ritchie</u>                  | 8 1/4             | <u>1285</u>      |              | Steel Shoe            |
| The surface of tract is owned in fee by <u>R.C. Beall</u>     | 6%                | <u>1905</u>      | <u>1905</u>  | Depth set <u>1905</u> |
| Address <u>Burnthouse, W. Va.</u>                             | 5 3/16            |                  |              |                       |
| Mineral rights are owned by <u>R.C. Beall</u>                 | 3                 |                  |              | Perf. top             |
| Address <u>Burnthouse, W. Va.</u>                             | 2                 |                  | <u>2380</u>  | Perf. bottom          |
| Drilling commenced <u>April 1, 1920</u>                       | Liners Used       |                  |              | Perf. top             |
| Drilling completed <u>May 18, 1920</u>                        |                   |                  |              | Perf. bottom          |
| Date Shot <u>June 20, '35</u> From <u>2351</u> To <u>2380</u> |                   |                  |              |                       |
| With <u>80 Quarts Nitro Glycerine</u>                         |                   |                  |              |                       |
| Open Flow /10ths Water in _____ Inch                          |                   |                  |              |                       |
| /10ths Merc. in _____ Inch                                    |                   |                  |              |                       |
| Volume _____ Cu. Ft.  |                   |                  |              |                       |
| Rock Pressure _____ lbs. _____ hrs.                           |                   |                  |              |                       |
| Oil <u>25</u> bbls., 1st 24 hrs.                              |                   |                  |              |                       |
| Fresh water _____ feet _____ feet                             |                   |                  |              |                       |
| Salt water _____ feet _____ feet                              |                   |                  |              |                       |

|                         |      |         |             |
|-------------------------|------|---------|-------------|
| CASING CEMENTED         | SIZE | No. Ft. | Date        |
| COAL WAS ENCOUNTERED AT | FEET | INCHES  |             |
|                         | FEET | INCHES  | FEET INCHES |
|                         | FEET | INCHES  | FEET INCHES |

| Formation     | Color | Hard or Soft | Top  | Bottom | Oil, Gas or Water | Depth Found | Remarks |
|---------------|-------|--------------|------|--------|-------------------|-------------|---------|
| Slate         | Dark  | Soft         | 548  | 551    |                   |             |         |
| L. Dunkard    |       |              | 1055 | 1080   |                   |             |         |
| B. Dunkard    |       |              | 1095 | 1200   |                   |             |         |
| Sand          |       |              | 1240 | 1295   |                   |             |         |
| Gas Sand      |       |              | 1320 | 1345   |                   |             |         |
| 1st Salt Sand |       |              | 1370 | 1410   |                   |             |         |
| 2nd Salt Sand |       |              | 1455 | 1545   |                   |             |         |
| Maxon Sand    |       |              | 1780 | 1805   |                   |             |         |
| L. Lime       |       |              | 1835 | 1860   |                   |             |         |
| Pencil Cave   |       |              | 1860 | 1870   |                   |             |         |
| Big Lime      |       |              | 1870 | 1905   |                   |             |         |
| Big Injun     |       |              | 1940 | 1990   | Gas               | 1960        |         |
| Berea Grit    |       |              | 2351 | 2380   | Water             | 2365        |         |
|               |       |              |      |        | Oil               | 2365        |         |





