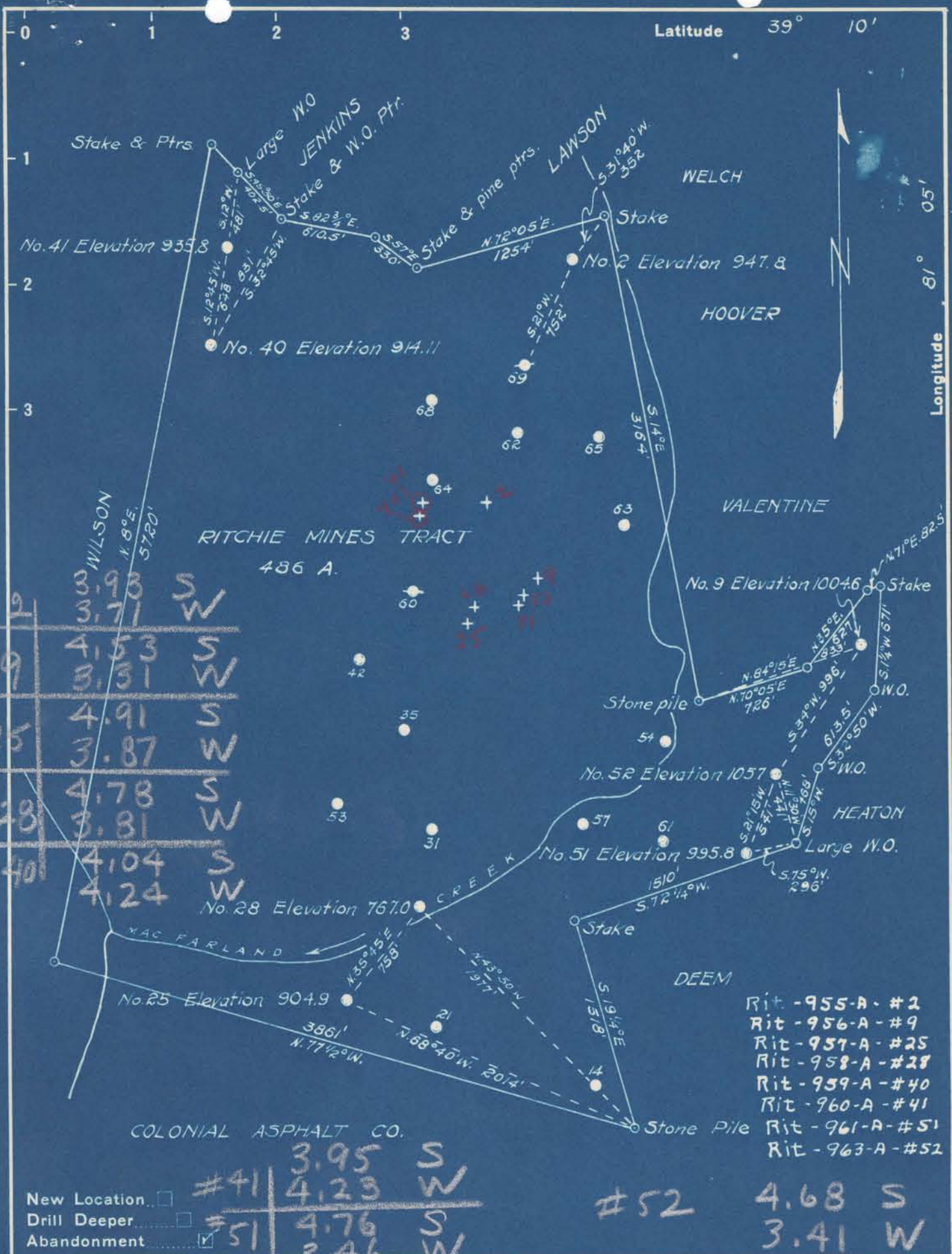


Latitude 39° 10'

Longitude 81° 05'



# 2	3.93	S
	3.71	W
# 9	4.53	S
	3.31	W
# 25	4.91	S
	3.87	W
# 28	4.78	S
	3.81	W
# 40	4.04	S
	4.24	W

- Rit - 955-A - # 2
- Rit - 956-A - # 9
- Rit - 957-A - # 25
- Rit - 958-A - # 28
- Rit - 959-A - # 40
- Rit - 960-A - # 41
- Rit - 961-A - # 51
- Rit - 963-A - # 52

# 41	3.95	S
	4.23	W
# 51	4.76	S
	3.46	W

52 4.68 S
3.41 W

New Location
 Drill Deeper
 Abandonment

Company C. W. CUNNINGHAM
 Address CAIRO, W. VA.
 Farm RITCHIE MINES TRACT
 Tract Acres 486 Lease No. _____
 Well (Farm) No. 2-9-25-28-40-41-51-52 Serial No. _____
 Elevation (Spirit Level) _____
 Quadrangle HARRISVILLE
 County RITCHIE District MURPHY
 Engineer B. F. RINEHART
 Engineer's Registration No. 648
 File No. _____ Drawing No. 759-GR
 Date June 17, 1949 Scale 1 in. = 800 ft.

STATE OF WEST VIRGINIA
 DEPARTMENT OF MINES
 OIL AND GAS DIVISION
 CHARLESTON

WELL LOCATION MAP
 FILE NO. 955-963-A
L 963A

+ Denotes location of well on United States Topographic Maps, scale 1 to 62,500, latitude and longitude lines being represented by border lines as shown.

- Denotes one inch spaces on border line of original tracing.



876

STATE OF WEST VIRGINIA
DEPARTMENT OF MINES
OIL AND GAS DIVISION

963A

WELL RECORD

Permit No. _____

Oil or Gas Well oil
(KIND)

Company Chas W. Cunningham
Address Box 175, Galro, W. Va.
Farm Ritchie Mines Tract Acres 486
Location (waters) Mac Farland Creek
Well No. 52 Elev. 1057
District Murphy County Ritchie
The surface of tract is owned in fee by J. B. Lodge & J. B. Geard Address unkwn
Mineral rights are owned by Paul J. Wilson & etals Address unknw

Drilling commenced ?
Drilling completed ?
Date Shot 9/21/16 From ? To ?
With 60 qts.
Open Flow /10ths Water in Inch
/10ths Merc. in Inch
Volume Cu. Ft.
Rock Pressure lbs. hrs.
Oil bbls., 1st 24 hrs.
Fresh water feet feet
Salt water feet feet

Casing and Tubing	Used in Drilling	Left in Well	Packers
Size			
16			Kind of Packer
13			
10	1800	none	Size of
8 1/2	1121'6"	none	
6 5/8	1670'	1670'	Depth set
5 3/16			
3			Perf. top
2			Perf. bottom
Liners Used			Perf. top
			Perf. bottom

CASING CEMENTED	SIZE	No. Ft.	Date
COAL WAS ENCOUNTERED AT		FEET	INCHES
	FEET	INCHES	FEET
	FEET	INCHES	FEET

Formation	Color	Hard or Soft	Top	Bottom	Oil, Gas or Water	Depth Found	Remarks
Salt Sand			1800'	1898'			
Oil & Gas			1876'	1890'			
Total Depth	1898'						

