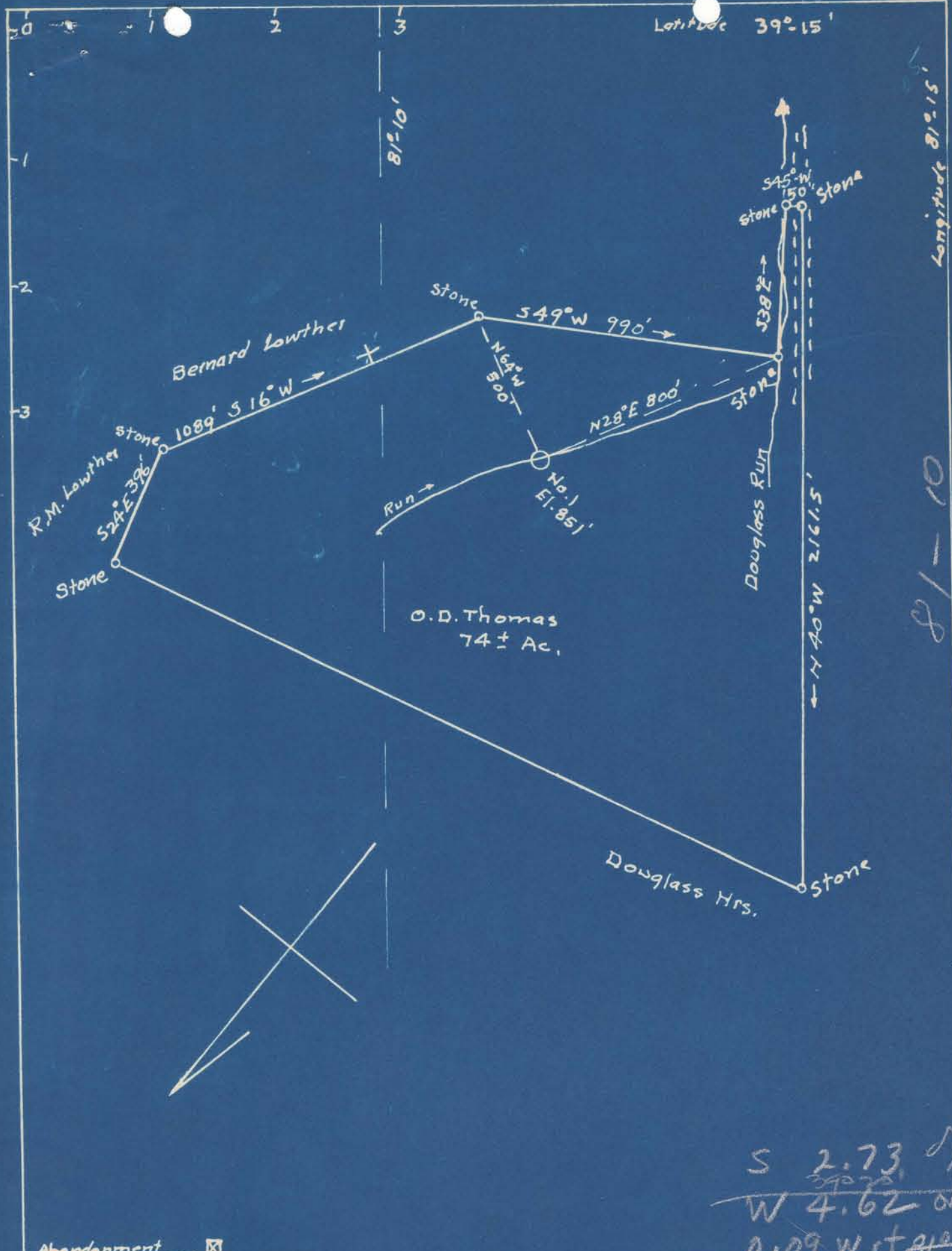


Latitude 39° 15'

Longitude 81° 15'



81-10

Abandonment

S 2.73  
 W 4.62  
 0.09 with 81/10

COMPANY: Dinsmoot & Co  
 ADDRESS: St. Marys, W. Va.  
 FARM: O.D. Thomas  
 TRACT: ACRES: 74± LEASE NO.  
 WELL NO. 1 SERIAL NO.  
 ELEVATION: 851  
 QUADRANGLE: St Marys  
 COUNTY: Ritchie DISTRICT: Grant  
 ENGINEER: George P. Clarke  
 ENGINEERS NO. 102  
 FILE NO. DRAWING:  
 DATE: 10-23-50 SCALE: 1" = 400'

~~SUNC~~

WELL ABANDONMENT MAP  
Rit-1000-A



STATE OF WEST VIRGINIA  
DEPARTMENT OF MINES  
OIL AND GAS DIVISION

877

WELL RECORD

Permit No. 1000A

Oil or Gas Well X (KIND)

Company Dinsmoor & Company  
Address St. Marys, W. Va.  
Farm O. D. Thomas Acres 74  
Location (waters) \_\_\_\_\_  
Well No. 1 Elev. 851  
District Grant County Ritchie  
The surface of tract is owned in fee by Dinsmoor & Co.  
Address St. Marys, W. Va.  
Mineral rights are owned by \_\_\_\_\_  
Address \_\_\_\_\_

Drilling commenced \_\_\_\_\_  
Drilling completed 1920  
Date Shot \_\_\_\_\_ From \_\_\_\_\_ To \_\_\_\_\_  
With \_\_\_\_\_

Open Flow /10ths Water in \_\_\_\_\_ Inch  
/10ths Merc. in \_\_\_\_\_ Inch  
Volume \_\_\_\_\_ Cu. Ft.  
Rock Pressure \_\_\_\_\_ lbs. \_\_\_\_\_ hrs.  
Oil \_\_\_\_\_ bbls., 1st 24 hrs.  
Fresh water \_\_\_\_\_ feet \_\_\_\_\_ feet  
Salt water \_\_\_\_\_ feet \_\_\_\_\_ feet

Casing and Tubing	Used in Drilling	Left in Well	Packers
Size			Kind of Packer
16			
13			
10			Size of
8 1/4			
6 5/8		1600	Depth set
5 3/16			
3			Perf. top
2			Perf. bottom
Liners Used			Perf. top
			Perf. bottom

CASING CEMENTED \_\_\_\_\_ SIZE \_\_\_\_\_ No. Ft. \_\_\_\_\_ Date \_\_\_\_\_

COAL WAS ENCOUNTERED AT \_\_\_\_\_ FEET \_\_\_\_\_ INCHES  
\_\_\_\_\_ FEET \_\_\_\_\_ INCHES \_\_\_\_\_ FEET \_\_\_\_\_ INCHES  
\_\_\_\_\_ FEET \_\_\_\_\_ INCHES \_\_\_\_\_ FEET \_\_\_\_\_ INCHES

Formation	Color	Hard or Soft	Top	Bottom	Oil, Gas or Water	Depth Found	Remarks
Injun			1800	1960			
Squaw			1960	2010			
Total Depth				2010			

G



