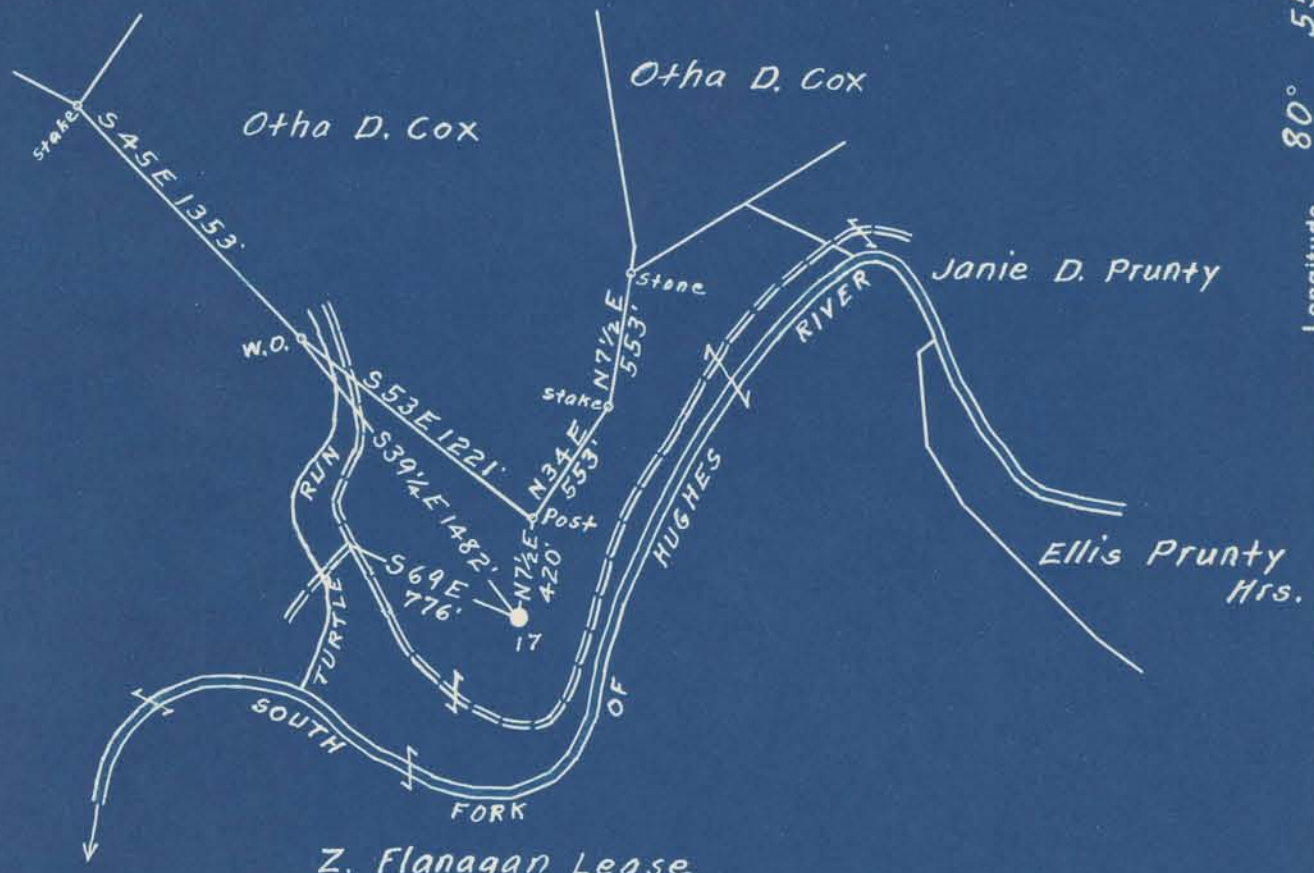


Latitude 39° 10'

Longitude 80° 55'

Scale 1" = 800 Feet



Z. Flanagan Lease  
850<sup>a</sup>  
Mary Flanagan (surface)

S 0.87  
W 0.05

Surface owned by Mary Flanagan.  
Address: Miss Mary Flanagan, Harrisville, Ritchie Co. W. Va.  
No Coal.

New Location   
Drill Deeper   
Abandonment

On 800' Map No. 5. Sqs. 5 21 W 16-17.

Company Salem Supply Co.  
Address Salem, W. Va.  
Farm Z. Flanagan  
Tract \_\_\_\_\_ Acres 850 Lease No. \_\_\_\_\_  
Well (Farm) No. 17 Serial No. \_\_\_\_\_  
Elevation (Spirit Level) Floor - 881.60  
Ground - 879.10  
Quadrangle Holbrook  
County Ritchie District Union  
Engineer Elsworth Staines  
Engineer's Registration No. 2221  
File No. \_\_\_\_\_ Drawing No. \_\_\_\_\_  
Date Oct. 17th, 1950 Scale 1" = 800 Feet

STATE OF WEST VIRGINIA  
DEPARTMENT OF MINES  
OIL AND GAS DIVISION  
CHARLESTON

WELL LOCATION MAP  
FILE NO. Rit-1003-A

+ Denotes location of well on United States Topographic Maps, scale 1 to 62,500, latitude and longitude lines being represented by border lines as shown.  
- Denotes one inch spaces on border line of original tracing.





865

STATE OF WEST VIRGINIA  
DEPARTMENT OF MINES  
OIL AND GAS DIVISION

WELL RECORD

Permit No. 1003 A

Oil or Gas Well X

(KIND)

Company Salem Supply Co.  
Address Salem, W. Va.  
Farm Z, Flanagan Acres 8.50  
Location (waters) \_\_\_\_\_  
Well No. 17 Elev. 881.60  
District Union County Ritchie  
The surface of tract is owned in fee by \_\_\_\_\_  
Address \_\_\_\_\_  
Mineral rights are owned by \_\_\_\_\_  
Address \_\_\_\_\_

Drilling commenced \_\_\_\_\_  
Drilling completed 5/24/1904  
Date Shot \_\_\_\_\_ From \_\_\_\_\_ To \_\_\_\_\_  
With \_\_\_\_\_

Open Flow \_\_\_\_\_ /10ths Water in \_\_\_\_\_ Inch  
\_\_\_\_\_ /10ths Merc. in \_\_\_\_\_ Inch  
Volume \_\_\_\_\_ Cu. Ft.  
Rock Pressure \_\_\_\_\_ lbs. \_\_\_\_\_ hrs.  
Oil \_\_\_\_\_ bbls., 1st 24 hrs.  
Fresh water \_\_\_\_\_ feet \_\_\_\_\_ feet  
Salt water \_\_\_\_\_ feet \_\_\_\_\_ feet

Casing and Tubing	Used in Drilling	Left in Well	Packers
Size			Kind of Packer
16			
13			
10			Size of
8 1/4			
6 1/2		1356	Depth set
5 3/16			
3			Perf. top
2			Perf. bottom
Liners Used			Perf. top
			Perf. bottom

CASING CEMENTED \_\_\_\_\_ SIZE \_\_\_\_\_ No. Ft. \_\_\_\_\_ Date \_\_\_\_\_

COAL WAS ENCOUNTERED AT \_\_\_\_\_ FEET \_\_\_\_\_ INCHES  
\_\_\_\_\_ FEET \_\_\_\_\_ INCHES \_\_\_\_\_ FEET \_\_\_\_\_ INCHES  
\_\_\_\_\_ FEET \_\_\_\_\_ INCHES \_\_\_\_\_ FEET \_\_\_\_\_ INCHES

Formation	Color	Hard or Soft	Top	Bottom	Oil, Gas or Water	Depth Found	Remarks
Slate			515	523			
Cow Run Sand			945	985			
Salt Sand			1325	1410			
Maxon			1645	1705			
Big Lime			1785	1855			
Big <del>LINE</del> Sand			1855	1885			
Total Depth				1889		011,1861-71	

