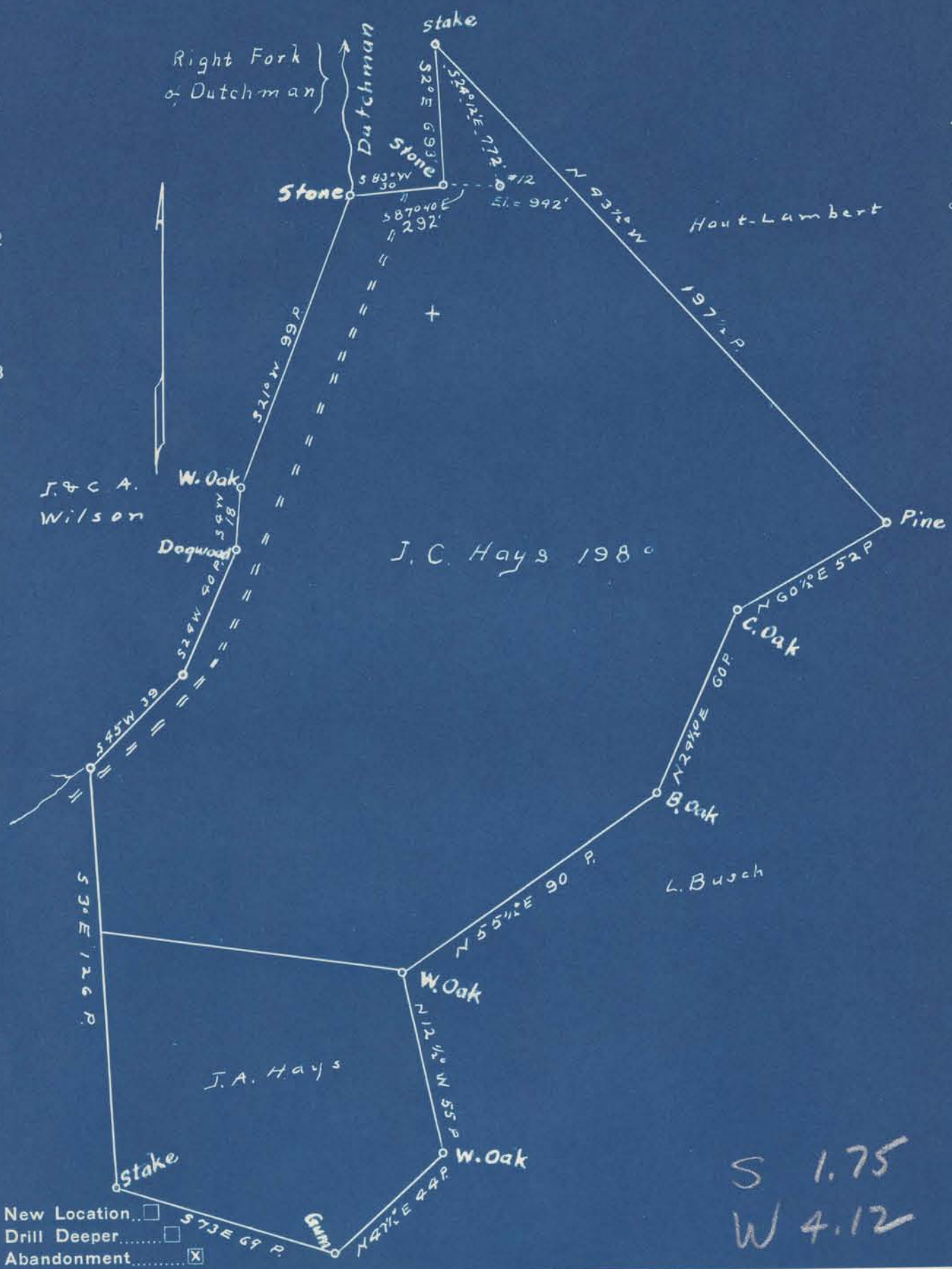


Latitude 39° 05'

Longitude 81° 05'



- New Location
- Drill Deeper
- Abandonment

Company VALLEY STEEL PRODUCTS CO.  
 Address 124 SIDNEY ST. ST. LOUIS 4, MO.  
 Farm J. C. Hays  
 Tract \_\_\_\_\_ Acres 198 Lease No. \_\_\_\_\_  
 Well (Farm) No. 12 Serial No. \_\_\_\_\_  
 Elevation (Spirit Level) 992'  
 Quadrangle Harrisville  
 County Ritchie District Murphy  
 Engineer Robert R. Anderson  
 by O. Meredith  
 Engineer's Registration No. 296  
 File No. \_\_\_\_\_ Drawing No. SC  
 Date Oct 7 49 Scale 1 in = 40 Poles

STATE OF WEST VIRGINIA  
 DEPARTMENT OF MINES  
 OIL AND GAS DIVISION  
 CHARLESTON

**WELL LOCATION MAP**  
 FILE NO. Rit-1009-A

+ Denotes location of well on United States Topographic Maps, scale 1 to 62,500, latitude and longitude lines being represented by border lines as shown.

- Denotes one inch spaces on border line of original tracing.

J. C. HAYS NO. 12 WELL.

1009A

Murphy District, Ritchie County, W. Va.  
 By Valley Steel Products Co., 124 Sidney St., St. Louis, Mo.  
 Abandoned under permit Rit-.....-A?  
 On 198 acres, on Dutchman Run.  
 Elevation, 942' L.  
 Surface and minerals owned by J. C. Hays Heirs, Brohard, W. Va.  
 Drilling commenced sometime in 1921; completed about March 20, 1921.  
 Shot March 24, 1921, at 1755', with 80 qts. glycerine.  
 No water reported.  
 10" casing, 104' (pulled); 8 1/2", 1053' (pulled); 6 3/4", 1607'; 2" tubing  
 has been pulled.  
 Casing not cemented.  
 No coal was encountered.  
 No packer.  
 Record as given by South Penn Oil Co. who drilled well.  
 Oil well. Record to Dept. of Mines dated Nov. 4, 1950.  
 Record to ROT from Mrs. Griffith June 28, 1951. Old File No. 837.

	Top.	Bottom.
Usual formations in this area to		
Big Dunkard Sand, regular	1046	1060
Slate	1060	1100
Sand, regular	1100	1125
Slate	1125	1185
Sand, regular	1185	1200
Slate	1200	1316
Sand	1316	1409
Slate, dark, hard, grey	1409	1489
Sand	1489	1505
Slate	1505	1599
Gas Sand, hard	1599	1649
Slate	1649	1700
Salt Sand, medium, regular (oil, 1755')	1700	1787
Total depth		1787



887

STATE OF WEST VIRGINIA  
DEPARTMENT OF MINES  
OIL AND GAS DIVISION

Ab 1009-A

WELL RECORD

Permit No. (drilled in 1921)

Oil or Gas Well **OIL**  
(KIND)

Company **VALLEY STEEL PRODUCTS CO**  
Address **124 Sidney St. St. Louis, 4 Mo.**  
Farm **J. C. HAYS** Acres **198**  
Location (waters) **Dutchmen run**  
Well No. **12** Elev. **942**  
District **MURPHY** County **RITCHIE**  
The surface of tract is owned in fee by **J. C HEYS HEIRS**  
Address **Brohard, W Va**  
Mineral rights are owned by **J C HAYS HEIRS**  
Address **BROHARD, WEST VA**  
Drilling commenced **sometime in 1921**  
Drilling completed **about March 20th 1921**  
Date Shot **Mar 24** From **1921** To **P 1755**  
With **80 quarts glycerine**  
Open Flow /10ths Water in **none reported** Inch  
/10ths Merc. in **none reported** Inch  
Volume **none reported** Cu. Ft.  
Rock Pressure **none reported** lbs. hrs.  
Oil **amount not stated** bbls., 1st 24 hrs.  
Fresh water **none reported** feet  
Salt water **none** feet

Casing and Tubing	Used in Drilling	Left in Well	Packers
Size			<b>NONE</b>
16			Kind of Packer
13			
10	<b>104</b>	<b>none</b>	Size of
8 1/4	<b>1058</b>	<b>none</b>	
6 5/8	<b>1607</b>	<b>1607</b>	Depth set.
5 3/16			
3			Perf. top
2	<b>(2 inch tubing has been pulled)</b>		Perf. bottom
Liners Used	<b>No liners</b>		Perf. top
			Perf. bottom

CASING CEMENTED **SIZE** No. Ft. Date  
**No casing cemented.**

COAL WAS ENCOUNTERED AT **FEET** INCHES  
**NONE**  
**FEET** INCHES **FEET** INCHES  
**FEET** INCHES **FEET** INCHES

Formation	Color	Hard or Soft	Top	Bottom	Oil, Gas or Water	Depth Found	Remarks
RECORD AS GIVEN BY SOUTH PENN OIL COMPANY WHO DRILLED WELL.							
Usual formations in this area to							
BIG DUNKARD	reg	regular	1046	1060			
Slate			1060	1100			
SAND	reg		1100	1125			
Slate			1125	1185			
Sand	regl		1185	1200			
Slate			1200	1316			
Sand			1316	1409			
Slate	dark	hard grey	1409	1489			
Sand			1489	1505			
Slate			1505	1599			
Gas sand		hard	1599	1649			
Slate			1649	1700			
Salt sand	med	regular	1700	1787			
OIL			1755		<b>OIL</b>	<b>1755</b>	
Total depth						<b>1787 FT TOTAL DEPTH</b>	



