

Company HARPER & RINEHART

Address CAIRO, W. VA.

Farm O. C. HAINES

Tract _____ Acres 75 1/4 Lease No. _____

Well (Farm) No. 11 & 27 Serial No. _____

Elevation (Spirit Level) 1001 & 986

Quadrangle HARRISVILLE

County RITCHIE District GRANT

Engineer B. F. RINEHART

Engineer's Registration No. 648

File No. _____ Drawing No. 950-GR

Date May 12, 1953 Scale 1 in. = 300 ft.

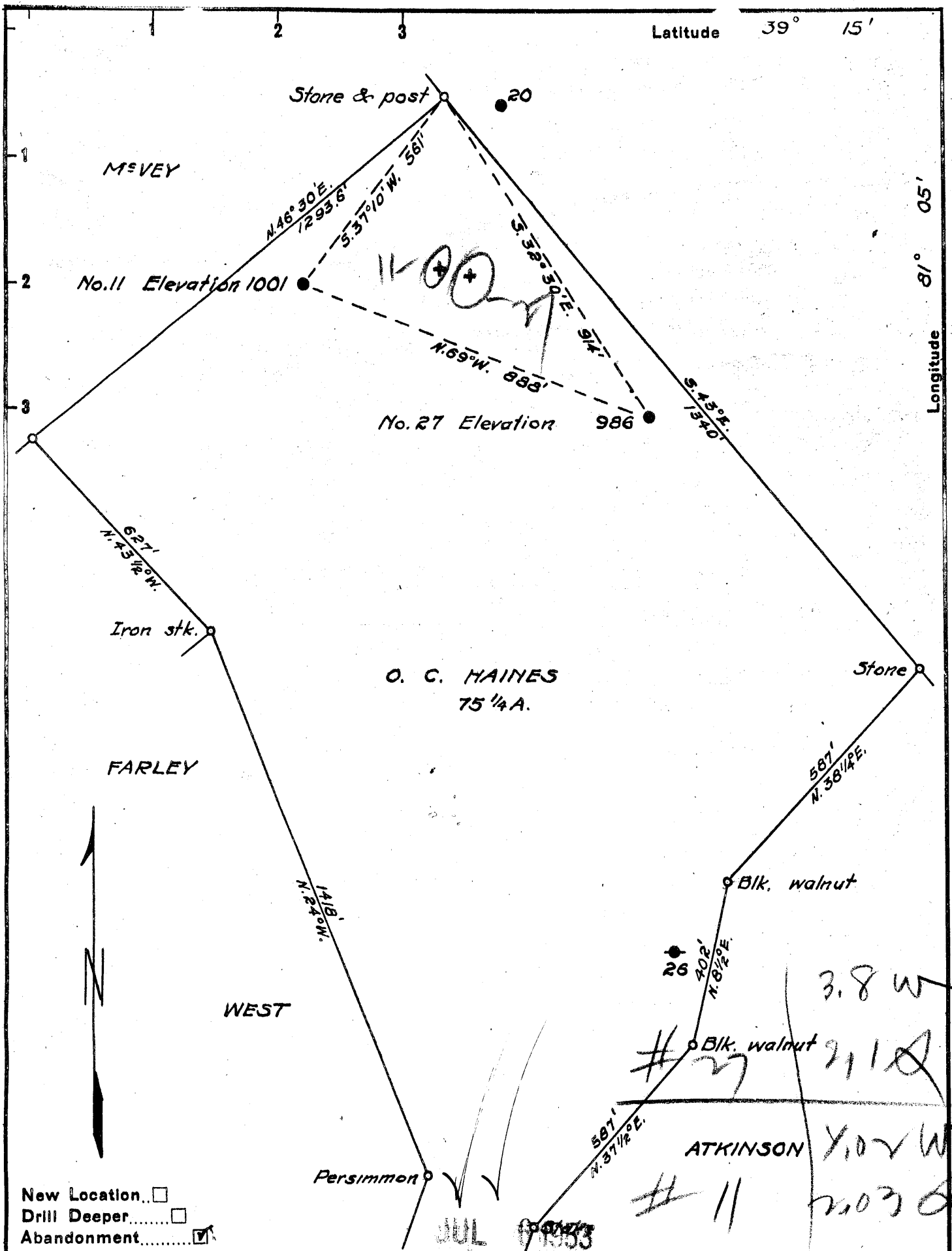
STATE OF WEST VIRGINIA
DEPARTMENT OF MINES
OIL AND GAS DIVISION
CHARLESTON

WELL LOCATION MAP
FILE NO. Rit-1196-A

+ Denotes location of well on United States Topographic Maps, scale 1 to 62,500, latitude and longitude lines being represented by border lines as shown.

- Denotes one inch spaces on tracing line of original tracing.

O. C. HAINES No. 11 (or 27)? - HARPER & RINEHART - RIT-1196-A



New Location...
 Drill Deeper.....
 Abandonment.....

Company HARPER & RINEHART
 Address CAIRO, W. VA.
 Farm O. C. HAINES
 Tract _____ Acres 75 1/4 Lease No. _____
 Well (Farm) No. 11 & 27 Serial No. _____
 Elevation (Spirit Level) 1001 & 986
 Quadrangle HARRISVILLE
 County RITCHIE District GRANT
 Engineer B. F. RINEHART
 Engineer's Registration No. 648
 File No. _____ Drawing No. 950 - GR
 Date May. 12, 1953 Scale 1 in. = 300 ft.

STATE OF WEST VIRGINIA
 DEPARTMENT OF MINES
 OIL AND GAS DIVISION
 CHARLESTON

WELL LOCATION MAP
 FILE NO. Rit-1196-A-#27
Rit-1201-A-#11

+ Denotes location of well on United States Topographic Maps, scale 1 to 62,500, latitude and longitude lines being represented by border lines as shown.
 = Denotes one inch spaces on border line of original tracing.

O. C. HAINES Mrs. 78 & 11 — HARPER & RINEHART — 2 1201-A
 RIT-1196-A