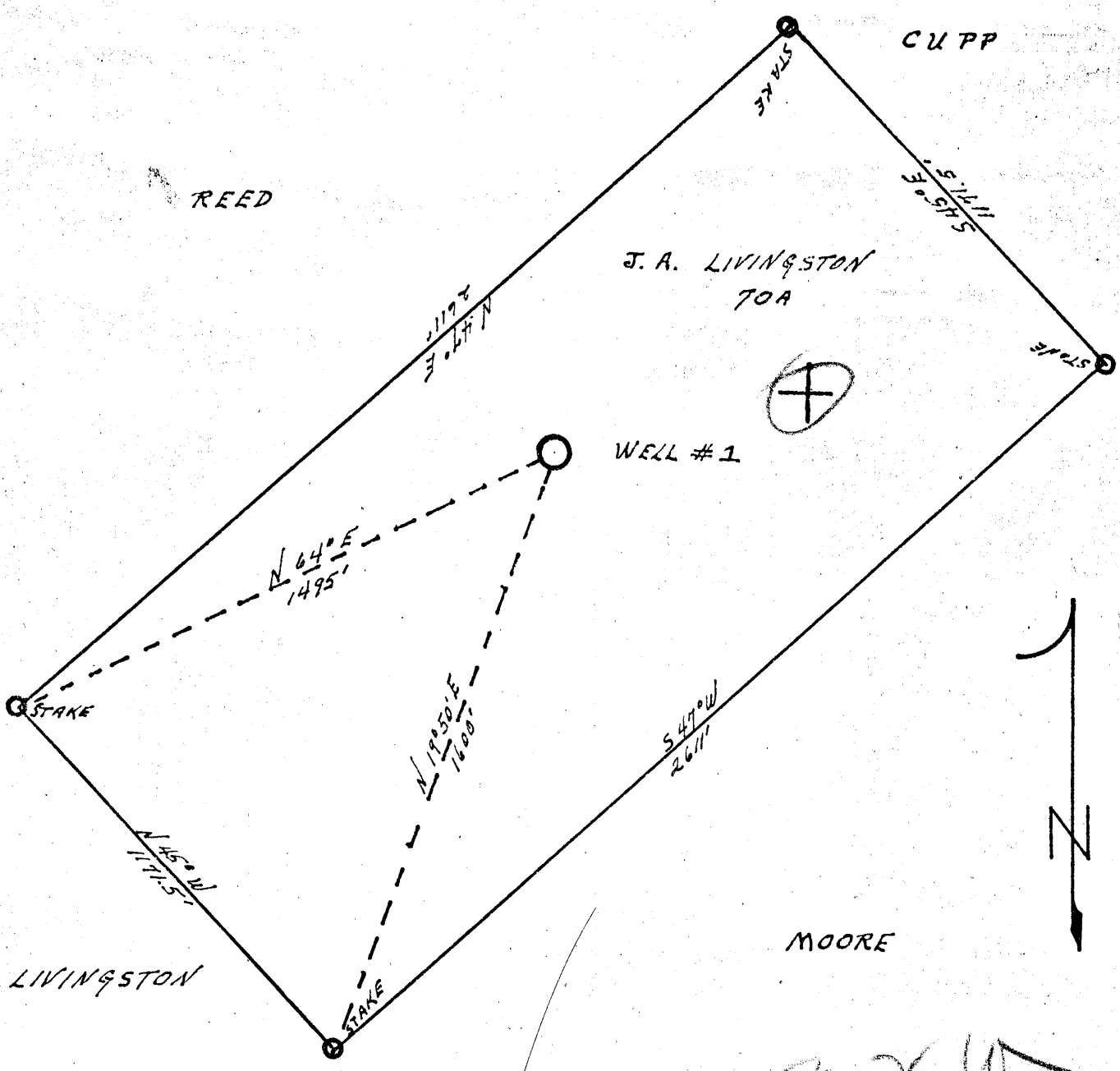


Latitude 39° 20'

Longitude 81° 00'



New Location..   
 Drill Deeper.....   
 Abandonment.....

AUG. 20 1958

*2.2 W*  
*4.8 Q*

Company J. F. DEEM  
 Address HARRISVILLE, W. VA  
 Farm JULIA A. LIVINGSTON  
 Tract \_\_\_\_\_ Acres 70 Lease No. \_\_\_\_\_  
 Well (Farm) No. 1 Serial No. \_\_\_\_\_  
 Elevation (Spirit Level) 1010'  
 Quadrangle ST. MARYS  
 County RITCHIE District CLAY  
 Engineer Donald W. Marria  
 By J. F. DEEM  
 Engineer's Registration No. 1053  
 File No. \_\_\_\_\_ Drawing No. \_\_\_\_\_  
 Date JULY 23 1956 Scale 1" = 400'

STATE OF WEST VIRGINIA  
 DEPARTMENT OF MINES  
 OIL AND GAS DIVISION  
 CHARLESTON

WELL LOCATION MAP  
 FILE NO. Rit-1262-A

+ Denotes location of well on United States Topographic Maps, scale 1 to 62,500, latitude and longitude lines being represented by border lines as shown.  
 - Denotes one inch spaces on border line of original tracing.