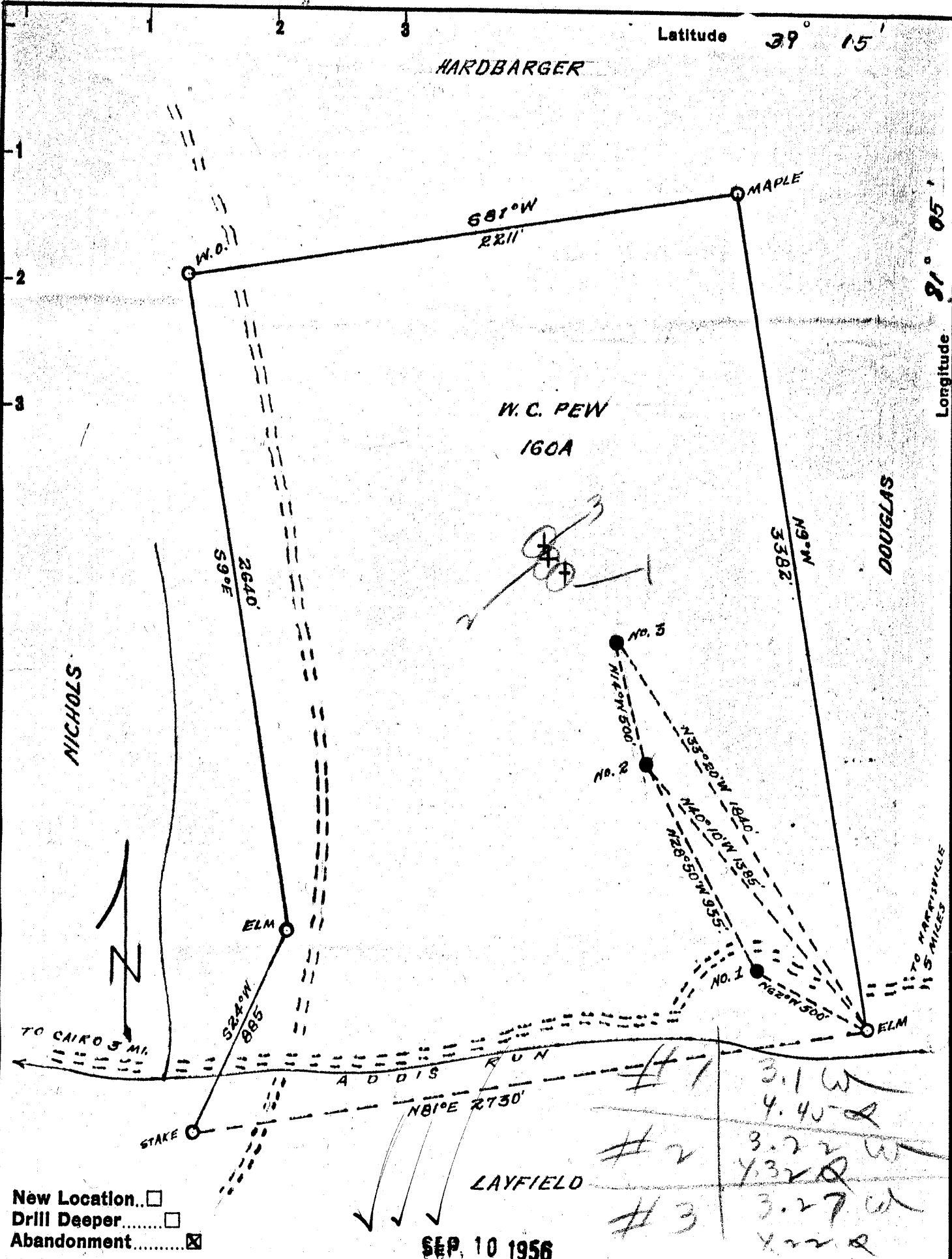


Latitude 39° 15'

HARDBARGER

Longitude 91° 05'



Company EDWARD HALL
 Address HARRISVILLE, W. VA.
 Farm W.C. PEW
 Tract _____ Acres 160 Lease No. _____
 Well (Farm) No. 1, 2, 3 Serial No. _____
 Elevation (Spirit Level) 695', 805', 840'
 Quadrangle HARRISVILLE
 County RITCHEE District GRANT
 Engineer Donald W. Morris
 BY J. F. DEEM
 Engineer's Registration No. 1653
 File No. _____ Drawing No. _____
 Date AUG. 22, 1956 Scale 1" = 500'

STATE OF WEST VIRGINIA
 DEPARTMENT OF MINES
 OIL AND GAS DIVISION
 CHARLESTON

WELL LOCATION MAP

FILE NO. Rit-1263-A-#3
Rit-1264-A-#1

+ Denotes location of well on United States Topographic Maps, scale 1 to 62,500, latitude and longitude lines being represented by border lines as shown.

- Denotes one inch spaces on border line of original tracing.

W.C. PEW Nos 3 & 1 - EDWARD HALL - RIT-1263-A-#3