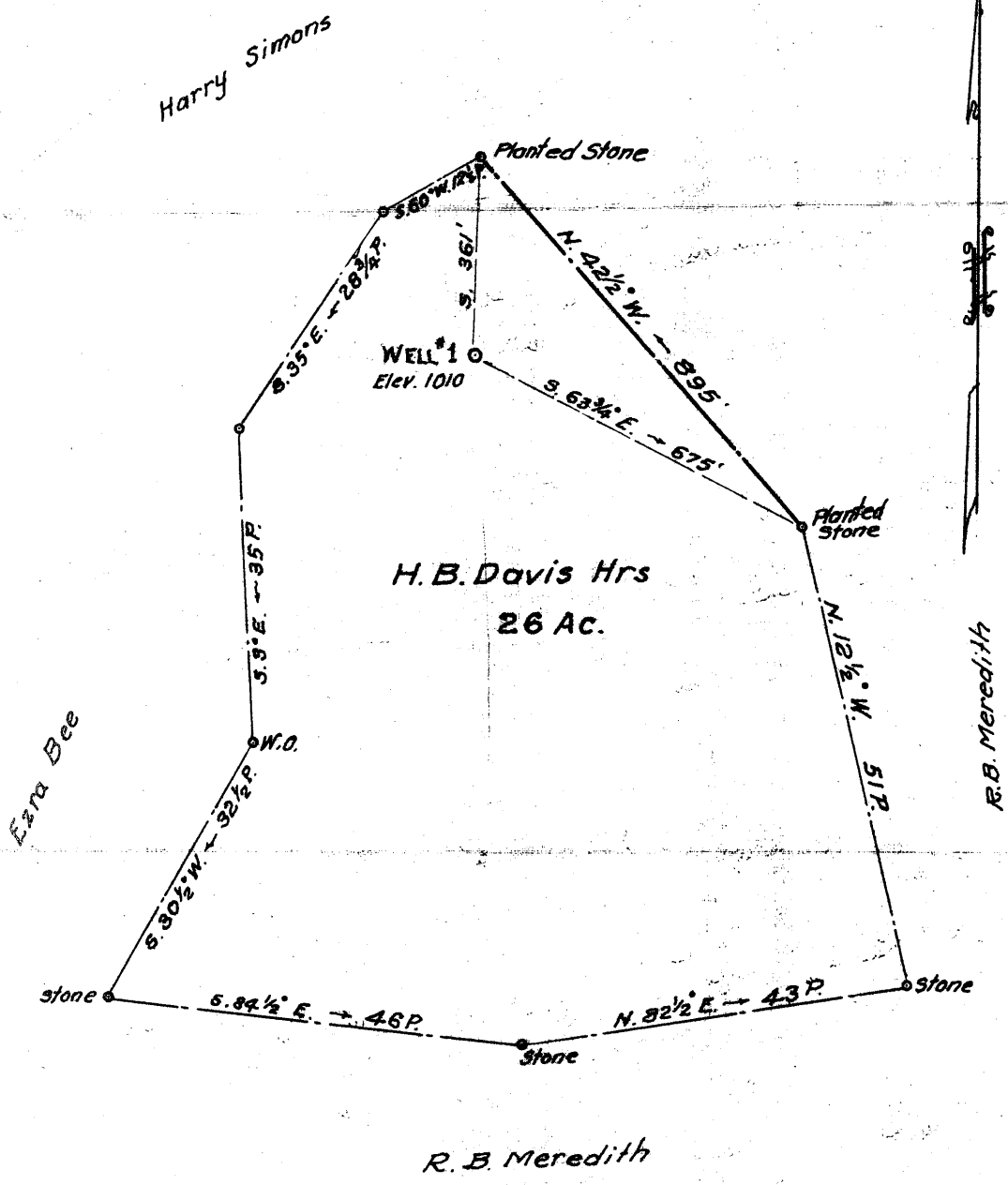


Latitude 39° 10'

Longitude 80° 55'



New Location
 Drill Deeper
 Abandonment

JUL - 9 1962

0.75 W
 3.2 Q

Company Vesta Fuel Co. Clyde Crane, Agt.
 Address 215 South Court St, Harrisville, W. Va.
 Farm H. B. Davis Hrs.
 Tract 1 Acres 26 Lease No. _____
 Well (Farm) No. 1 Serial No. _____
 Elevation (Spirit Level) 1010
 Quadrangle Holbrook
 County Ritchie District Union
 Engineer Parker E. Peters
 Engineer's Registration No. 485
 File No. _____ Drawing No. _____
 Date May 11, 1962 Scale 1" = 20 P.

STATE OF WEST VIRGINIA
 DEPARTMENT OF MINES
 OIL AND GAS DIVISION
 CHARLESTON

WELL LOCATION MAP
 FILE NO. Rit -1342-A

+ Denotes location of well on United States Topographic Maps, scale 1 to 62,500, latitude and longitude lines being represented by border lines as shown.
 - Denotes one inch spaces on border line of original tracing.