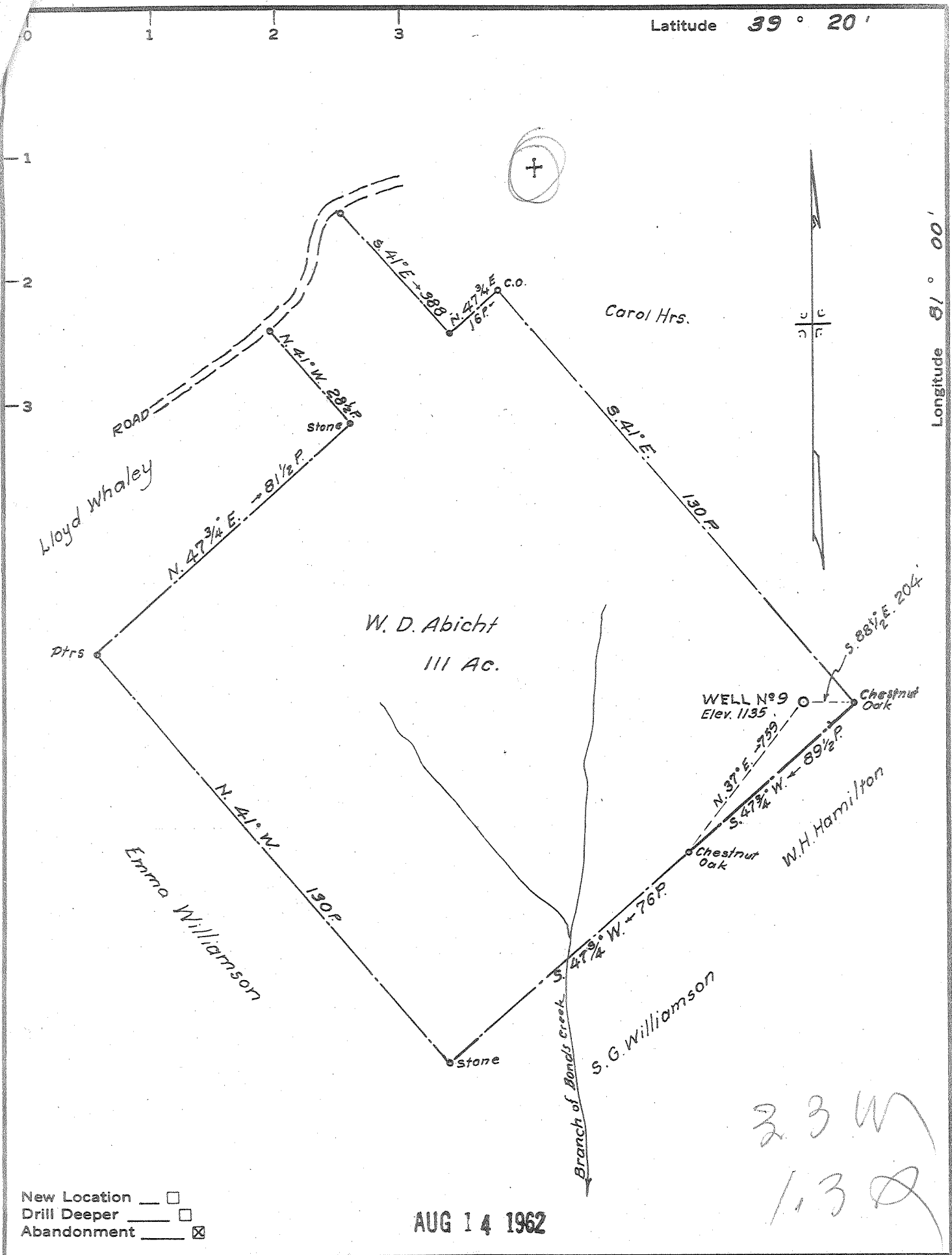


Latitude 39° 20'

Longitude 81° 00'



New Location
 Drill Deeper
 Abandonment

AUG 14 1962

23 W
 13 Q

Company Hanton Oil Co, L.F. Giard, Agt
 Address 616 Harrison St, Harrisville, W. Va
 Farm W.D. Abicht
 Tract 1 Acres 111 Lease No. _____
 Well (Farm) No. 9 Serial No. _____
 Elevation (Spirit Level) 1135
 Quadrangle St. Marys
 County Ritchie District Clay
 Engineer Parker E. Peters
 Engineer's Registration No. 485
 File No. _____ Drawing No. _____
 Date July 9, 1962 Scale 1" = 30 P.

STATE OF WEST VIRGINIA
 DEPARTMENT OF MINES
 OIL AND GAS DIVISION
 CHARLESTON

WELL LOCATION MAP

FILE NO. RIT-1343-A
 Plugged 8/17/62

+ Denotes location of well on United States Topographic Maps, scale 1 to 62,500, latitude and longitude lines being represented by border lines as shown.

- Denotes one inch spaces on border line of original tracing.