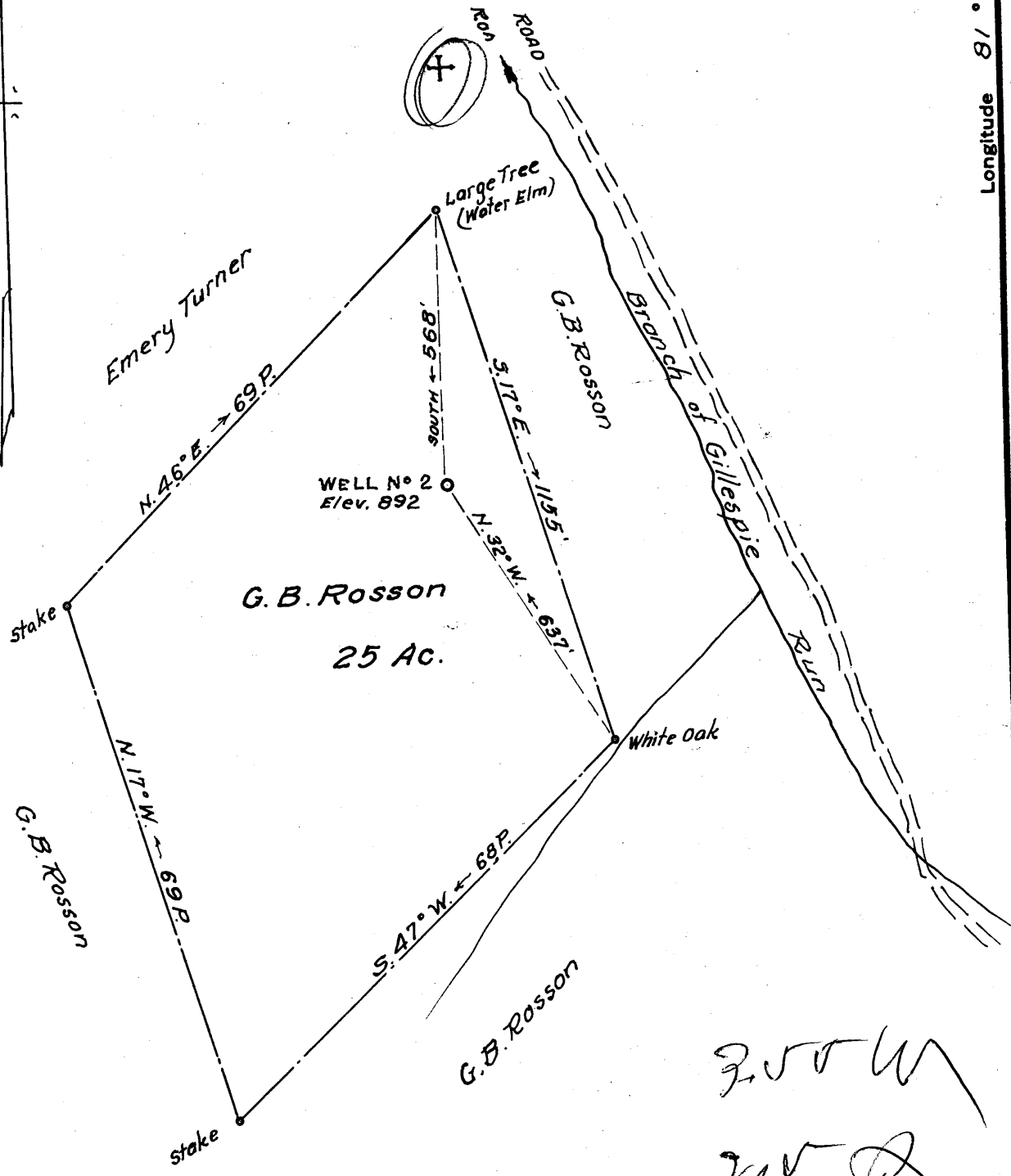


Latitude 39° 10'

Longitude 81° 10'



OCT 21 1962

250 W  
 215 D

New Location   
 Drill Deeper   
 Abandonment

Company C. E. Beardmore  
 Address 1003 Glendale Road, Marietta, Ohio  
 Farm G. B. Rosson  
 Tract 1 Acres 25 Lease No. \_\_\_\_\_  
 Well (Farm) No. # 2 Serial No. \_\_\_\_\_  
 Elevation (Spirit Level) 892  
 Quadrangle Harrisville  
 County Ritchie District GRANT  
 Engineer Parker E. Peters  
 Engineer's Registration No. 485  
 File No. \_\_\_\_\_ Drawing No. \_\_\_\_\_  
 Date Sept. 28, 1962 Scale 1" = 20 P.

STATE OF WEST VIRGINIA  
 DEPARTMENT OF MINES  
 OIL AND GAS DIVISION  
 CHARLESTON

WELL LOCATION MAP  
 FILE NO. RIT-1347-A

+ Denotes location of well on United States Topographic Maps, scale 1 to 62,500, latitude and longitude lines being represented by border lines as shown.

- Denotes one inch spaces on border line of original tracing.