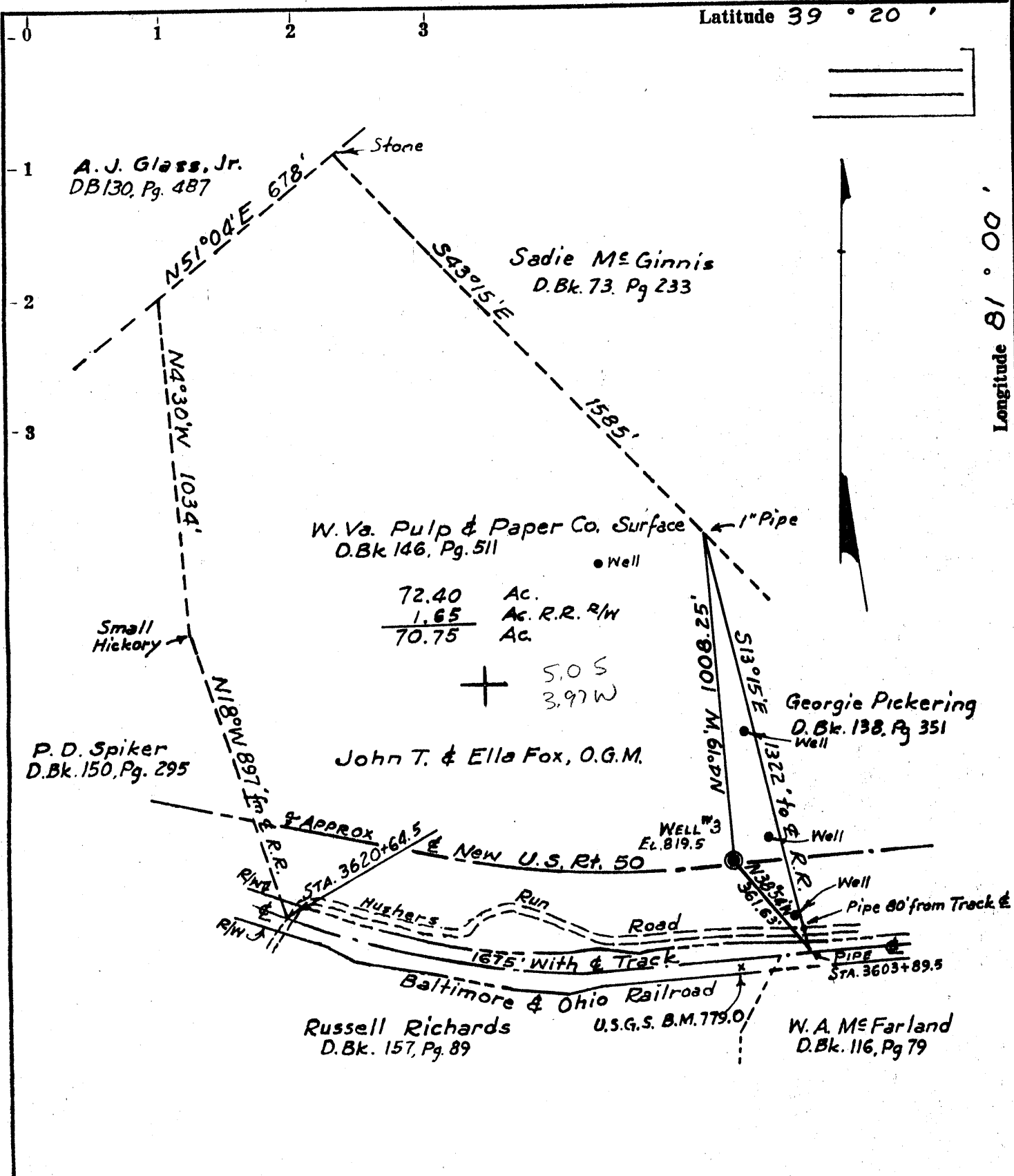


Latitude 39 ° 20 '



72.40 Ac.  
 1.65 Ac. R.R. R/W  
 70.75 Ac.  
 + 5.0 S  
 3.97 W

- Fracture. . . .
- Redrill. . . .
- New Location.
- Drill Deeper. . . .
- Abandonment. . . .  - *Journal 5-15-70*

Source of Elevation U.S.G.S. Bench Mark as shown on Plat  
 I, the undersigned, hereby certify that this map is correct to the best of my knowledge and belief and shows all the information required by paragraph 6 of the rules and regulations of the oil and gas section of the mining laws of West Virginia.

Minimum accuracy, one part in 200

Company HARTMAN OIL & GAS CO.  
 Address Parker Apt. Bldg., Parkersburg, W. Va.  
 Farm W. VA. PULP & PAPER CO. (Surf.)  
 Tract Acres 70.75 Lease No. \_\_\_\_\_  
 Well (Farm) No. 3 Serial No. \_\_\_\_\_  
 Elevation (Spirit Level) 819.5 SURFACE  
 Quadrangle ST. MARYS SE  
 County Ritchie District Clay  
 Surveyor or Engineer Paul E. Marshall  
 Surveyor's or Engineer's Registration No. 45 L.S.  
 File No. \_\_\_\_\_ Drawing No. \_\_\_\_\_  
 Date April 30, 1970 Scale 1" = 400'

STATE OF WEST VIRGINIA  
 DEPARTMENT OF MINES  
 OIL AND GAS DIVISION  
 CHARLESTON  
**WELL LOCATION MAP**  
 FILE NO. RIT-1449 (A)

+ Denotes location of well on United States Topographic Maps, scale 1 to 62,500, latitude and longitude lines being represented by border lines as shown.  
 — Denotes one inch spaces on border line of original tracing