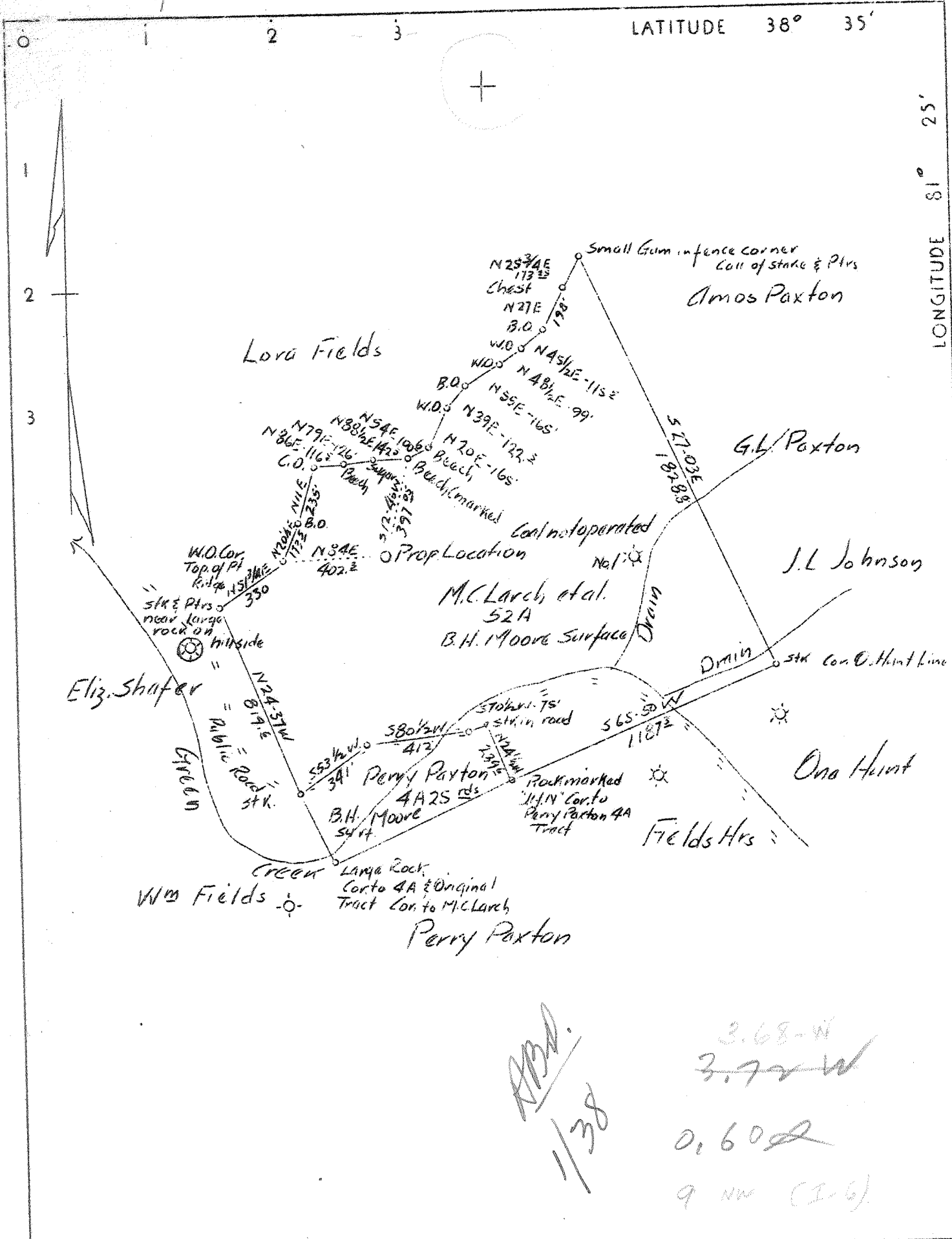


LATITUDE 38° 35'

LONGITUDE 81° 25'



APPA.
1/38

3.68-W
3.72 W
0.60
9 NW (I.G.)

Company Ohio Valley Gas Corporation
 Address 401 Union Bldg., Charleston, W. Va.
 Farm M. C. Larch et al
 Tract One Acres 52 Lease No. 371
 Well (Farm) No. 2 Serial No. 511
 Elevation (Spirit Level) 993.24 (Stadia)
 Quadrangle Walton S. W. **5W**
 County Roane District Harper
 Engineer B. B. Couk
 Engineer's Registration No. _____
 File No. 3 Drawing No. W.O.#146
 Date 4-10-37 Scale 1"-500'

STATE OF WEST VIRGINIA
 Department of Mines
 OIL AND GAS DIVISION
 Charleston

WELL LOCATION MAP
 File No. ROA-2671

+ Denotes location of well on U. S. Topographic Maps, scale 1 to 62,500 latitude and longitude lines being represented by border lines as shown.

— Denotes one inch spaces on border line of original tracing.

3-0 198 Deep Well

WEST VIRGINIA DEPARTMENT OF MINES

OIL AND GAS DIVISION

WELL RECORD

Permit No. Roa-267

Gas Well

Walton Quad.

CASING & TUBING

Company	Ohio Valley Gas Corp.	10	18	18
Address	401 Union Bldg., Charleston, W.Va.	8 1/2	891'5"	891'5"
Farm	M.C.Larch, et al. Acres 52	6 5/8	1851'2"	1851'2"
Location	Green Creek			
Well No.	2, serial No. 511, Elev. 993.24			
District	Harper County Roane			
Surface	B.H. Moore Address-not given			
Mineral	M.C.Larch, et al " "			
Drilling	Commenced April 18, 1937			
	Completed May 21, 1937			
Date shot	5-20-37 Depth 1975-1995			
Volume	35,000 Cu.ft.			
Rock Press.	150# 1 hrs.			

Formation	Color	Hgt	Top	Base	Result	Formation	Color	Hgt	Top	Base	Result
Surface			0	6		Slate & Shell			2388	2494	
Sand rock			6	28							
Slate			28	50		TOTAL DEPTH				2494	
Red Rock			50	60							
Slate			60	70							
Sand			70	125							
Slate			125	180		5-20-37 Injun Sand shot with 40 qts.					
Red Rock			180	200		No increase in gas. Drilled to Berea					
Slate			200	220		horizon. No Berea sand found.					
Sand			220	270							
Slate			270	290		Gas in Salt sand 1451 (33M)					
Red Rock			290	390		Show gas 1960 and 1990 (Not enough to test)					
Slate			390	400							
Red Rock			400	490		Gas pay in Big Injun 1990 to 1995.					
Slate			490	525		Test 2/10 w 1" natural.					
Red Rock			525	565		After shot 9/10 w 1" (35M)					
Slate			565	625							
Lime Shell			625	635							
Slate			635	695	Water						
Sand			695	910	765-	2 bailers					
Coal			910	915	Water						
Slate			915	925	1500						
Sand			925	960							
Slate			960	1010							
Sand			1010	1100							
Slate			1100	1110							
Sand			1110	1150							
Slate & Shell			1150	1370	Water						
Salt Sand			1370	1605	1540						
Slate			1605	1610							
Sand			1610	1637							
Slate & Shell			1637	1677							
Maxon			1677	1781							
Little Lime			1781	1811							
Pencil Cave			1811	1819							
Big Lime			1819	1849							
Keener Sand			1849	1863							
Big Injun			1863	1995							
Slate			1995	1999							
Lime Shell			1999	2005							
Slate & Shell			2005	2070							
Lime Shell			2070	2090							
Slate & Shell			2090	2300							
Shells			2300	2365							
Slate	Dark		2365	2375							
Shalc	Brown		2375	2385							
Shell	Hard		2385	2388							

T.D. 5484 to Helderburg

1/5/38

Onondaga - 5254

Oriskany - 5390

Helderburg - 5426

Deep Well

WEST VIRGINIA DEPARTMENT OF MINES

OIL AND GAS DIVISION

W E L L R E C O R D

DEEPENING RECORD

Dry Hole

CASING & TUBING

Permit No. Roa. 267

Walton Quad.

Company	Ohio Valley Gas Corp.	10	18	18
Address	401 Union Bldg., Charleston, W.Va.	8 1/4	891'5"	891'5"
Farm	M.C.Larch Acres 52	6 5/8	1829'	1829'
Location	Green Creek	5 3/16	5266'	631'
Well No.	#1-Ser. 511 Elev. 993.24			
District	Harper County Roane			
Surface	B.H.Moore, Kettle, W.Va.			
Mineral	M.C.Larch, et al			
Drilling (Deeper)	Commenced 7/6/37 Completed 1/5/38			Casing Cemented: Size 8 1/4" 891'5" ; size, 6 5/8, 1829'.
Date Shot	1/5/38 Depth 3930-4248			
Volume	41,300 Cu.Ft. (Blow down to 16,000 C.F.)			
Rock Press.	Not given			

Formation	Color	How	TOP	Base	Result	Formation	Color	How	TOP	Base	Result
Began drilling at				2494							
Slate & Shells			2388	2900							
Slate	Dark		2900	2960							
Slate & Shells			2960	3140							
Slate	White		3140	3390							
Slate & Shell	Dark		3390	3485	Sh. Oil						
Slate & Shells	White		3485	3630	& Gas						
Slate & Shells	Brown		3630	3735	3640-						
Slate & Shells	White		3735	3800	3670						
Slate	Brown		3800	3830							
Slate & Shells	Dark		3830	3900							
Shale	Brown		3900	4100	Sn.						
Lime Shell			4100	4115	show						
Shale	Brown		4115	4210	Gas						
Slate	White		4210	4240	in						
Slate & Shells			4240	4420	Brown						
Slate	White		4420	4625	Shale						
Lime Shell			4625	4660	B.S.						
Slate & Shells			4660	4740							
Shale	Brown		4740	4775							
Slate	Brown		4775	4800							
Shale	Brown		4800	5254							
Carboniferous Lime			5254	5390							
Oriskany Sand			5390	5443	Dry in						
Lime			5443	5447	Oriskany	No show of oil, gas or water.					
Sand			5447	5463							
Lime			5463	5484							
TOTAL DEPTH				5484							
<p>Plugged back to 4947 and shot 1/5/38 with 2250# gelatin from 3930 to 4248 45 minutes A.S. tested 12/10 W. in 1" (41.3 M) blew down to 16 M. Well plugged and abandoned.</p>											