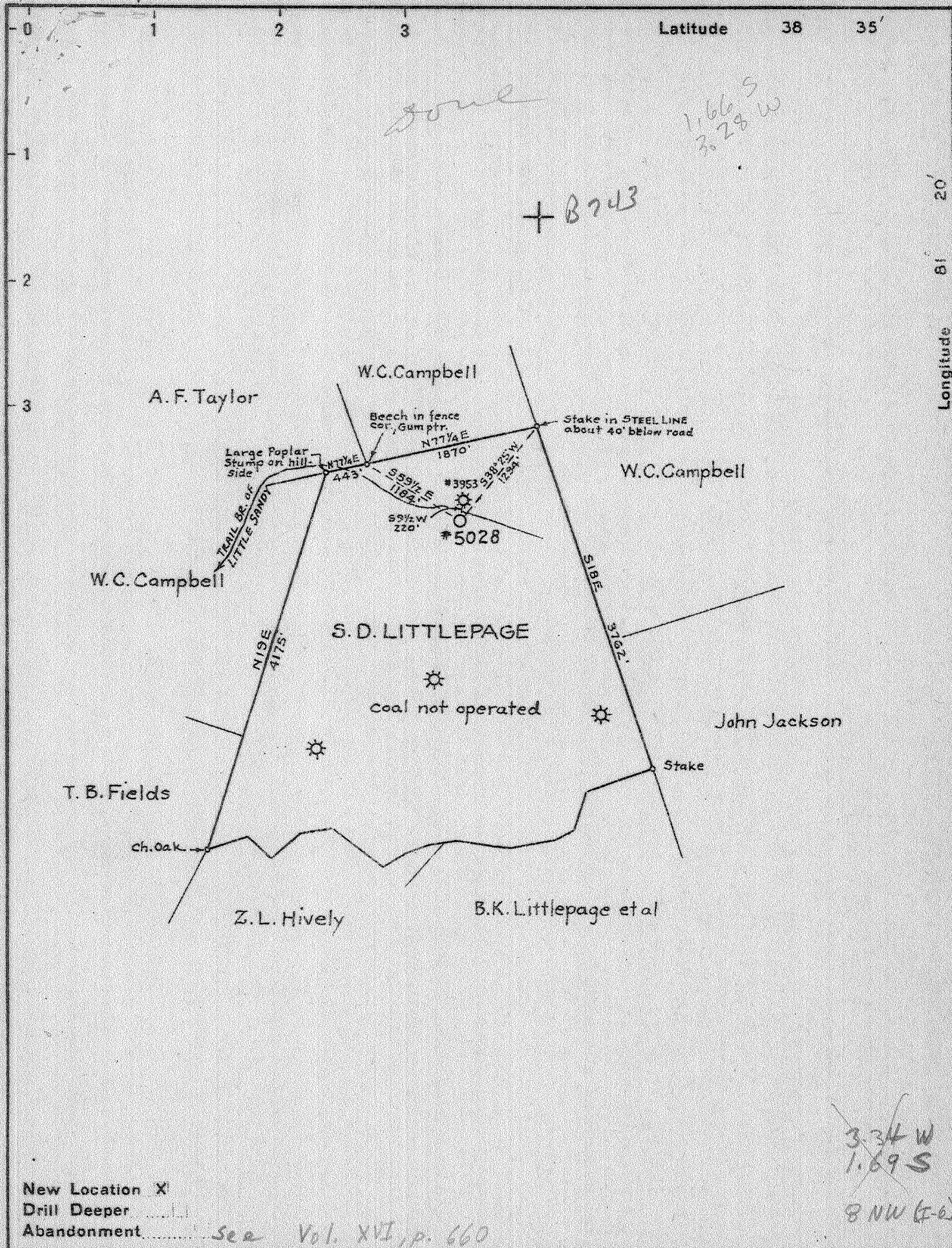


4

P



~~3.34 W~~
~~1.69 S~~
 8 NW (E-6)

Company UNITED FUEL GAS CO.
 Address CHARLESTON, W.VA.
 Farm S. D. LITTLEPAGE
 Tract _____ Acres 320 Lease No. 1981
 Well (Farm) No. 5 Serial No. 5028
 Elevation (Spirit Level) 1013.1
 Quadrangle WALTON - SC
 County WALTON District ROANE
 Engineer [Signature]
 Engineer's Registration No. 659
 File No. 74-73 Drawing No. _____
 Date MAY 7, 1941 Scale 1" = 1320'

STATE OF WEST VIRGINIA
 DEPARTMENT OF MINES
 OIL AND GAS DIVISION
 CHARLESTON

WELL LOCATION MAP
 FILE NO. ROA-413

+ Denotes location of well on United States Topographic Maps. scale 1 to 62,500, latitude and longitude lines being represented by border lines as shown.

- Denotes one inch spaces on border line of original tracing.

3-0 198

IMPERIAL TRACING CO. - C. & E. CO., N. Y.
Samples 4-I (0-5503)

Deep Well

S. D. LITTLEPAGE NO. 5 (5028) WELL.

Walton District, Roane County, W. Va.

By United Fuel Gas Company, Charleston, W. Va.

Located 3.32 mi. W. of 81° 20' and 1.7 mi. S. of 38° 35' - SC - Walton Quadrangle.

Elevation, 1013.1' L.

Permit Roa-413.

Completed October 1941.

Dry hole; salt water in Oriskany.

Section based on samples from 40 to 5503' examined by C. Absouri and H. H. C.

Martens. According to geologic map well starts in lower part of Monongahela. Martens' record from samples.

Top. Bottom. Thickness.

PENNSYLVANIAN, 1678± FEET

40 -	50	10	Siltstone, gray to green, shaly, 60%; green shale, 40%
50 -	68	18	Siltstone, gray, shaly, 50%; gray, green, and yellow shale, 50%
68 -	75	7	Shale, gray, 70%; green siltstone, 30%
75 -	89	14	Sandstone, white, medium-grained
89 -	113	24	Shale, gray to brown
113 -	130	17	Clay, very light brown, sandy
130 -	227	97	Clay, red; several samples contain small amounts of other rocks suggesting the possibility of much of the clay being cavings
227 -	233	6	Shale, yellow, 60%; green shale, 35%; red shale, 5%
233 -	270	37	Shale, red
270 -	290	20	Siltstone, green, sandy
290 -	303	13	Shale, red
303 -	308	5	Shale, green, red, and gray
308 -	313	5	Shale, green, silty
313 -	326	13	Sandstone, green, silty
326 -	338	12	Siltstone, gray to green
338 -	349	11	Sandstone, white, fine, with some siderite
349 -	373	24	Siltstone, green
373 -	390	17	Shale, red
390 -	413	23	Siltstone, green, sandy
413 -	425	12	Sandstone, white to black, fine, containing carbonaceous material, 50%; light-gray, soft shale, 50%
430 -	436	6	Shale, yellow, red, green, and gray
436 -	442	6	Shale, gray, 50%; yellow to red shale, 50%
442 -	458	16	Shale, green, 50%; brown and red shale, 50%
458 -	463	5	Siltstone, white, sandy, micaceous
463 -	516	53	Shale, green; some red and gray shale, perhaps cavings
516 -	545	29	Siltstone, light-green, sandy
545 -	551	6	Sandstone, white, fine (depth of sample doubtful)
551 -	552	1	Siltstone, greenish-yellow, shaly
552 -	636	84	Shale, gray, brown, and nearly white
636 -	660	24	Shale, gray, brown, and nearly white
660 -	667	7	Siltstone, very light gray
667 -	676	9	Sandstone, white, very fine, micaceous, containing siderite, 75%; very light gray siltstone, 25% (?)
676 -	683	7	Siltstone, gray to light-gray, sandy
683 -	708	25	Shale, gray
708 -	735	27	Sandstone, white, fine
735 -	745	10	Shale, gray, silty, carbonaceous
745 -	800	55	Sandstone, white, very fine; 20 to 30% of gray to brown shale, 768-786'
800 -	818	18	Shale, gray
818 -	832	14	Sandstone, white, very <i>fine</i>

Continued on page 2) (OVER)

Top.	Bottom.	Thickness.	
832	- 839	7	Sandstone, white, very fine, 80%; black shale, 20%
839	- 851	12	Shale, black, carbonaceous
851	- 927	76	Sandstone, white, fine; some thin streaks of gray shale
927	- 946	19	Shale, gray, silty
946	- 952	6	Sandstone, white, fine to very fine, with siderite spherulites
952	- 966	14	Siltstone, gray
966	- 998	32	Sandstone, white, fine
998	- 1012	14	Shale, gray, silty
1012	- 1046	34	Sandstone, white, very fine, micaceous; small amounts of gray shale and siltstone
1046	- 1054	8	Siltstone, very light gray
1054	- 1122	68	Shale, gray
1122	- 1155	33	Sandstone, very fine to medium-grained, micaceous
1155	- 1164	9	Siltstone, gray, sandy
1164	- 1178	14	Shale, gray
1178	- 1215	37	Siltstone, gray, containing siderite
1215	- 1239	24	Sandstone, white, very fine, silty, micaceous
1239	- 1272	33	Sandstone, white, medium- to coarse-grained
1272	- 1277	5	Shale, very dark gray, 50%; light-gray shale, 50%
1277	- 1324	47	Sandstone, white, very fine, silty
1324	- 1337	13	Sandstone, white, medium- to coarse-grained
1337	- 1339	2	Sandstone, white, fine
1339	- 1373	34	Sandstone, white, medium-grained
1373	- 1384	11	Shale and siltstone, gray
1384	- 1390	6	Sandstone, white, fine
1390	- 1396	6	Siltstone, gray, shaly
1396	- 1414	18	Sandstone, white, coarse, nearly all quartz; crystal faces on many grains
1414	- 1426	12	Sandstone, white, medium-grained, similar to that above
1426	- 1515	89	Sandstone, white, medium-grained, nearly all quartz; crystal faces on many grains
1515	- 1560	45	Sandstone, white, medium- to coarse-grained, nearly all quartz; many grains have crystal faces
1560	- 1567	7	Sandstone, white, coarse, 90%; gray shale and siltstone, 10%
1567	- 1590	23	Sandstone, white, coarse; nearly all quartz; many grains with crystal faces
1590	- 1605	15	Sandstone, white, very coarse; nearly all quartz; many grains with crystal faces and many fragments of quartz pebbles
1605	- 1632	27	Sandstone, white, coarse, pebbly; crystal faces on many grains
1632	- 1638	6	Sandstone, white, very coarse, pebbly
1638	- 1658	20	Sandstone, white, medium-grained; crystal faces on many grains; a few pieces of pyritic coal
1658	- 1664	6	Sandstone, white, medium-grained, with considerable amount of rust stain
1664	- 1678	14	Sandstone, white, medium-grained, nearly all quartz; crystal faces on many grains; some coarse to very coarse grains
MAUCH CHUNK GROUP, 71 FEET			
1678	- 1690	12	Sandstone, white, similar to that above but contains more pyrite and a few green shale fragments
1690	- 1723	33	Sandstone, white, fine, nearly all quartz; crystal faces on many grains; a little green shale, 1708-1713'
1723	- 1733	10	Limestone, brown, highly dolomitic
1733	- 1749	16	Limestone, brown; a little gray and green shale, 1744-1749'

(Continued on page 3)

WEST VIRGINIA DEPARTMENT OF MINES
OIL & GAS DIVISION
W E L L R E C O R D

Permit No. Roa 413
Company
Address
Farm
Location
Well No
District
Surface
Mineral
Commenced
Completed
Volume
Fresh Water
Salt Water

United Fuel Gas Co.
Box 1256, Charleston, W.Va.
S.D. Littlepage Acres 320
Trail Br. of Little Sandy
5028 Elev. 1013.1
Walton Roane County
S.D. Littlepage Hrs., Chas. W.Va.
Some
June 18, 1941
Sept. 17, 1941
Dry hole
120° 2 blrs. pr. hr.
5499-5503 ½ bbl. pr. 1 hr.

Dry Hole
CASING & TUBING
13 551' -
10 1787' -
8½ 1982' -
7 5358' -
Coal at 734' ---12"

Clay	0	20	Sand	1396	1565
Red Rock	20	40	Slate	1565	1567
Blue Slate	40	75	Salt Sand	1567	1665
Sand	75	89	Maxon	1665	1723
Slate	89	113	Little Limc	1723	1740
Sand	113	130	Slate Broken	1740	1746
Red Rock	130	154	Lime Shell	1746	1759
Slate	154	160	Pencil Cave	1759	1775
Red Rock	160	227	Big Lime	1775	1909
Slate	227	233	Injun	1909	1954
Red Rock	233	270	Sandy Shell	1954	1961
Blue Slate	270	295	Slate & Shell	1961	1978
Red Rock	295	303	Shell	1978	1985
Slate	303	313	Slate & Shell	1985	2165
Blue Sand	313	326	Lime Gray	2165	2200
Slate	326	331	Slate & Shell	2200	2334
Sand	331	349	Brown Shale	2334	2342
Slate	349	375	Borca Shell	2342	2347
Red Rock	375	390	Slate & Shell	2347	2372
Broken Sand	390	413	Gray Limc	2372	2400
Slate & Shells	413	460	Slate & Shell	2400	2470
Sand	460	470	Brown Shale	2470	2480
Slate & Shells	470	520	Slate & Shells	2480	2880
Sand	520	640	Slate	2880	3362
Slate	640	643	Slate & Shells	3362	3578
Slate & Shells	643	716	Lime Shell	3578	3590
Sand	716	734	Slate & Shells	3590	3950
Coal	734	735	Slate	3950	4090
Slate	735	747	Brown Shale	4090	4215
Sand	747	775	Slate	4215	4286
Slate	775	780	Slate & Shells	4286	4316
Sand	780	800	Brown Shale	4316	4350
Slate & Shells	800	820	Slate	4350	4650
Sand	820	842	Slate & Shells	4650	4683
Slate	842	851	Slate	4683	4880
Sand	851	880	Brown Shale	4880	5202
Slate	880	883	Slate	5202	5220
Sand	883	933	Shale	5220	5300
Slate & Shells	933	964	Blk. Slate	5300	5350
Sand	964	998	Corniferous Lime	5350	5483
Slate & Shells	998	1025	Oriskany Lime	5483	5503
Sand	1025	1054	TOTAL DEPTH		5503
Slate & Shells	1054	1125			
Sand	1125	1160	Gas 1332-1337 20/10 W 2" 189M Ran water to drown out gas		
Slate	1160	1215			
Salt Sand	1215	1275	Show oil 1847-1851		
Slate	1275	1280	Gas 1912-1922 18/10 W 2" 179M		
Sand	1280	1370	Gas 4095 No test		
Slate & Lime Shells	1370	1379			
Sand	1379	1390			
Slate	1390	1396			