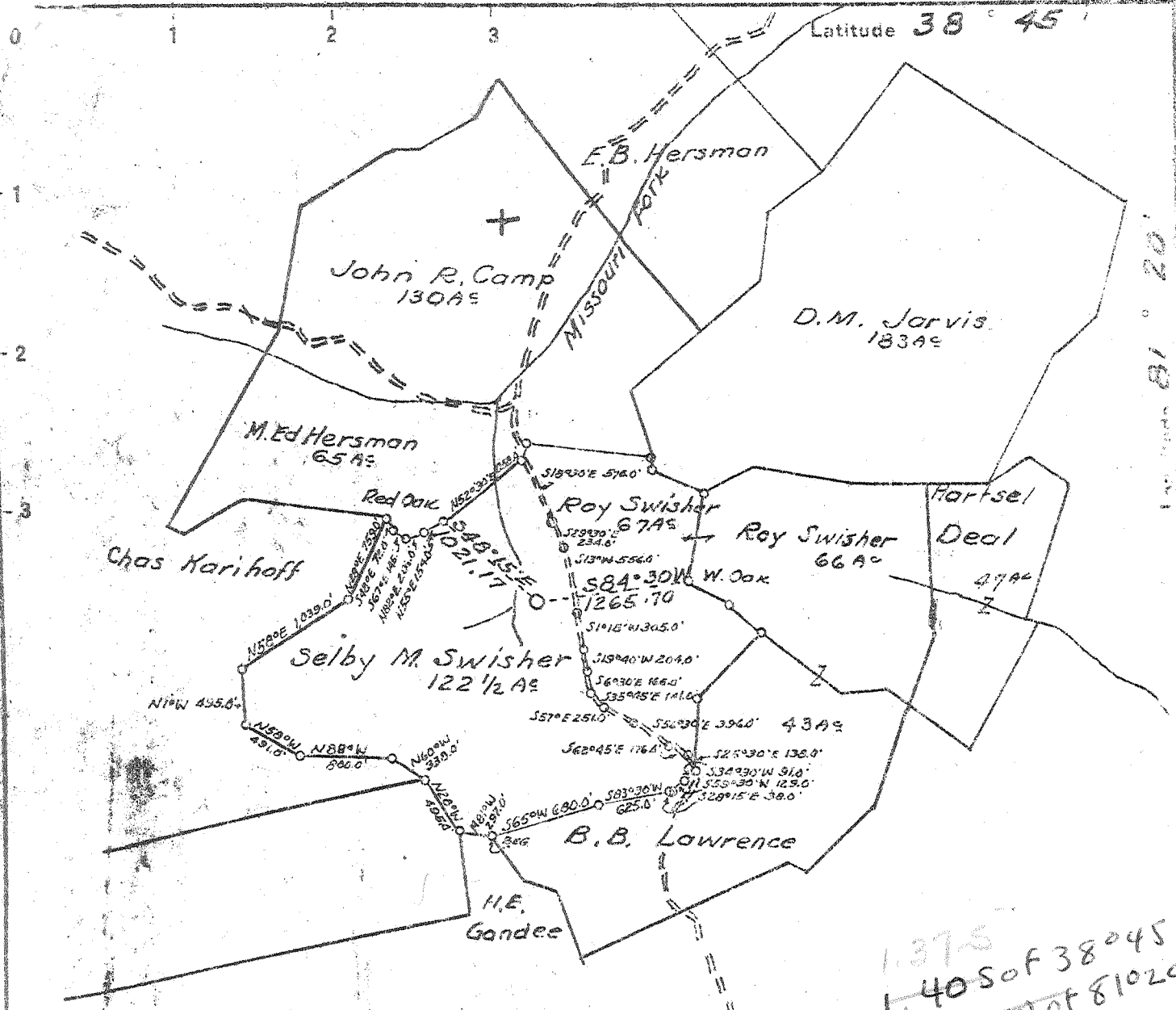


P

Latitude 38° 45'



1375  
 1.40 S of 38° 45'  
 4.32 W of 81° 20'  
 4.26 W  
 1.20 W (I-6)

- New Location
- Drill Deeper
- Abandonment

Unit # Wv. 65

Company Cadrey Cabot Inc.  
 Address Sec Union Bldg Charleston W. Va.  
 From Selby M. Swisher et al  
 Acres 122 Lease No. 1506  
 Well (Farm) No. 1 Serial No. 1393  
 Elevation (Spirit Level) 930  
 Quadrangle Walton - NC  
 County Roane District Spencer  
 Engineer H.J. Simmons Jr  
 Engineer's Registration No. 1652  
 Date 5-23-52 Scale 1" = 1320'

STATE OF WEST VIRGINIA  
 DEPARTMENT OF MINES  
 OIL AND GAS DIVISION  
 CHARLESTON

WELL LOCATION MAP  
 FILE NO. ROA-605

- + Denotes location of well on United States Topographic Maps, scale 1 to 62,500, latitude and longitude lines being represented by border lines as shown.
- Denotes one inch spaces on border lines of original tracing.

Deep well

Walton

Roa-605

GODFREY L. CABOT, INC.

WELL RECORD 6

Map Square Lot No. Warrant No. 50-44

SERIAL NO. 1393

OPERATING DISTRICT Grantsville

FARM Selby Swisher

NO. 1

LEASE NO.

COUNTY Roane

TAX DISTRICT TOWNSHIP

Spencer

STATE W. Va.

DRILLING COMMENCED July 15, 1952

DRILLING COMPLETED

December 29, 1952

CONTRACTOR C. F. Engle

ADDRESS Gassaway, W. Va.

ROCK PRESSURE RECORD

DRY HOLE

PRODUCING SAND RECORD

Sand	lbs. in	hrs.
Sand	lbs. in	hrs.
Sand	lbs. in	hrs.

Sand, from	to	Init. Prod.	M. C. F. Gas
Sand, from	to	Init. Prod.	M. C. F. Gas
Sand, from	to	Init. Prod.	M. C. F. Gas

OPEN FLOW

Time, Condition:

DRY HOLE

CASING RECORD

100lbs Water Mercury in inch opening

SIZE	WEIGHT	USED IN DRILLING	LEFT IN WELL
13"		130	
10"		1096	
8"		2026	
7"		2358	
5"		5560	

HOW CASING SET

Volume M. C. F.

24 HOUR PRODUCTION TEST AFTER TUBING

M. C. F. Line Pressure

Bbl. Oil in 24 Hours

TUBED AND SHUT IN

Date

Perfor. Size Kind

Set, Depth Size Anchor

Perf. Top Bottom

Perf. Top Bottom

DRY HOLE - NOT SHOT SHOOTING RECORD

Acid Shot with from to

Date

ELEVATION: 890

Gauge Before { Acid Shot

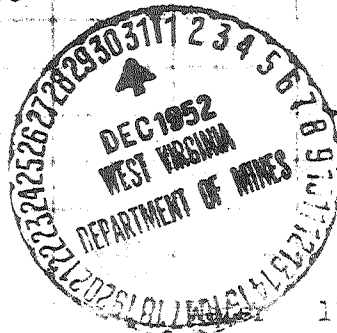
Gauge

Min. Hrs. After

{ Acid Shot

FORMATION COLOR TOP BOTTOM STEEL LINE MEASUREMENTS HARD OR SOFT OIL, GAS OR WATER DEPTH FOUND REMARKS

Soil		0	10						
Shale		10	26						
Red Rock		26	110			Water	60		
Slate		110	153						
Sand		153	210						
Red Rock		210	270						
Sand		270	329						
Red Rock		329	361						
Sand		361	398						
Red Rock		398	452						
Shale		452	486						
Sand		486	573			Water	540-560; 2 bailers per hour.		
Shale		573	694						
Sand		694	734						
Shale		734	740						
Red Rock		740	785						
Line		785	835						
Sand		835	925						
Red Rock		925	960						Hole caved 925-960
Line		960	1038						Hole caved 1000-1028
Sand		1038	1102	1096					
Shale		1102	1110						
Sand		1110	1150						
Shale		1150	1170						
Sand		1170	1210						
Shale		1210	1284						
Sand		1284	1310						
Shale		1310	1322						
Sand		1322	1405						
Sand & Shale		1405	1725						
Sand		1725	1864						1742-1760 ("Big Water")
Shale		1864	1864						
Marion		1864	2014						
Pencil Cave		2014	2017						
Big Line		2017	2153						
Injun Sand		2153	2184			Oil	2164-2167; show.		



SERIAL NO. 1393

FARM Selby Swisher

NO. 1

OPERATING DIST. Grantsville

MAP SQUARE LOT NO. WARRANT NO.

FORMATION	COLOR	TOP	BOTTOM	STEEL LINE MEASUREMENTS	HARD OR SOFT	OIL, GAS OR WATER	DEPTH FOUND	REMARKS
Shale		2184	2187					
Sand		2187	2200					
Shale		2200	2289					
Lime		2289	2297	2294				
Slate & Shell		2297	2570					
Brown Shale		2570	2595					
Berea Shell		2595	2600					
Slate & Shell		2600	4115	2612				
Shale		4115	4300					
Slate & Shell		4300	4350			Gas	4400	Smell; exhausted.
Brown Shale		4350	4440					
Slate & Shell		4440	5080			Gas	5140	Smell; exhausted.
Brown Shale		5080	5394					
Shale		5394	5440					
Brown Shale		5440	5480					
Black Shale		5480	5540					
Corniferous Lime		5540	5708	5560		Gas	5709	Show.
Oriskany Sand		5708				Water	5720	Filled 170' in 6 hrs.
Total Depth			5726.					

U.D. - 2000  
 3800  
 4617  
 4790  
 5176

5540 5708  
 900 900  
 -----  
 = 4640-4808

TOTAL DEPTH

DATE

APPROVED

FORMAN