

Latitude 38° 40'

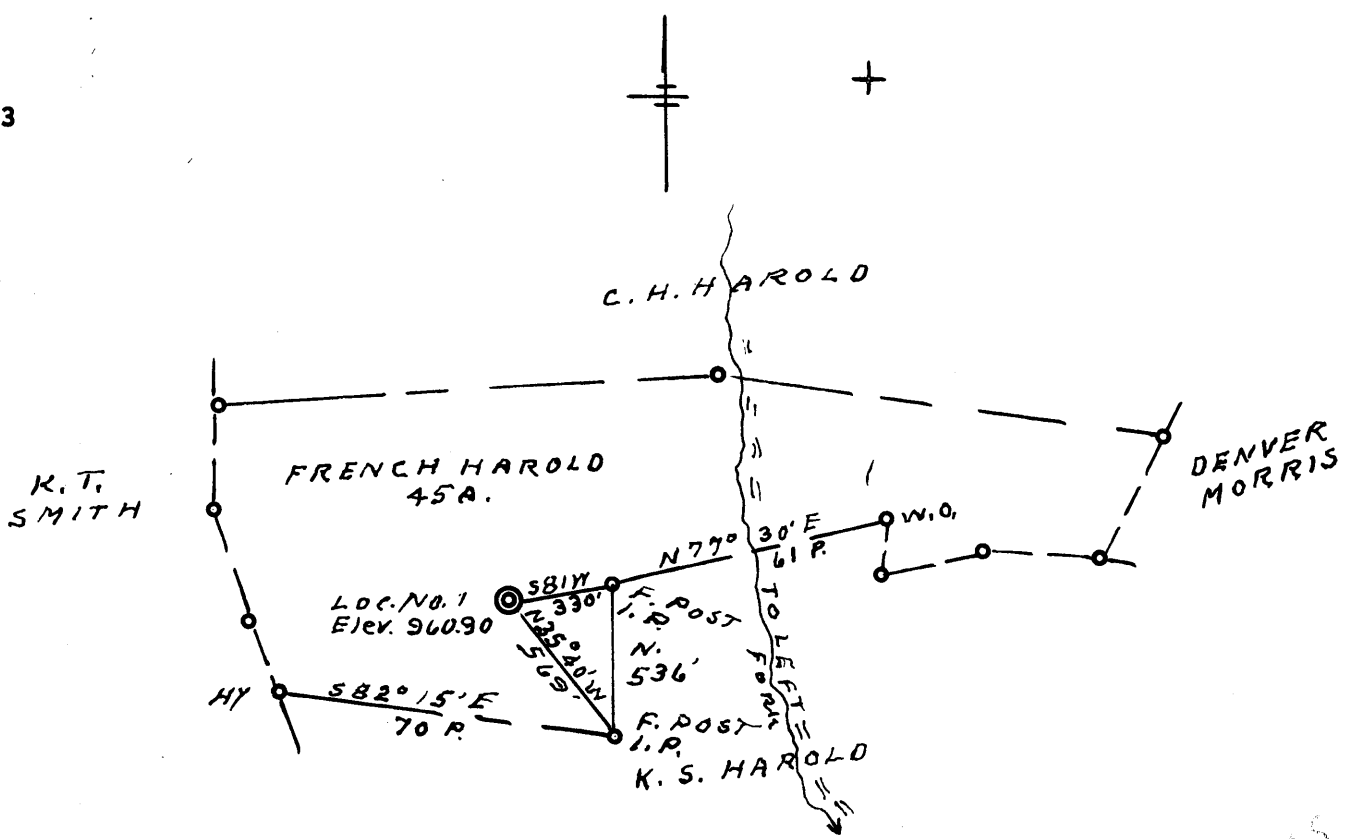
Longitude 81° 05'

0 1 2 3

-1

-2

-3



2945  
2.87W

ACCURACY 1" IN 200'

New Location .  SOURCE ELEV. FORKS ROAD WEST 778.00

Drill Deeper . . . . .

Redrill . . . . .

Abandonment . . . . .

"I, the undersigned, hereby certify that this map is correct to the best of my knowledge and belief and shows all the information required by paragraph 6 of the rules and regulations of the oil and gas section of the mining laws of West Virginia."

Company DALE DRILLING CO.

Address SPENCER, W. VA.

Farm FRENCH HAROLD

Tract \_\_\_\_\_ Acres 45 Lease No. \_\_\_\_\_

Well (Farm) No. 1 Serial No. \_\_\_\_\_

Elevation (Spirit Level) 960.90

Quadrangle OTTER - C

County ROANE District GEARY

Engineer G. F. Dye

Engineer's Registration No. 804

File No. \_\_\_\_\_ Drawing No. \_\_\_\_\_

Date 1-13-65 Scale 1" = 40 FEET

STATE OF WEST VIRGINIA  
DEPARTMENT OF MINES  
OIL AND GAS DIVISION  
CHARLESTON

WELL LOCATION MAP

FILE NO. ROA-1147

+ Denotes location of well on United States Topographic Maps, scale 1 to 62,500, latitude and longitude lines being represented by border lines as shown.

-- Denotes one inch spaces on border line of original tracing.



STATE OF WEST VIRGINIA  
DEPARTMENT OF MINES  
OIL AND GAS DIVISION

Rotary   
Spudder   
Cable Tools   
Storage

Quadrangle Otter

WELL RECORD

Oil or Gas Well Dry hole  
(KIND)

Permit No. ROA-11147

Company J.B. Dale DBA Dale Drilling Company  
Address Spencer, West Virginia  
Farm French Harold Acres 45  
Location (waters) \_\_\_\_\_  
Well No. 1 Elev. 960.90  
District Geary County Rosne  
The surface of tract is owned in fee by French Harold  
Address Uler, W.Va.  
Mineral rights are owned by French Harold  
Address Uler, W.Va.  
Drilling commenced Jan 27, 1965  
Drilling completed Feb 13, 1965  
Date Shot \_\_\_\_\_ From \_\_\_\_\_ To \_\_\_\_\_  
With \_\_\_\_\_  
Open Flow /10ths Water in \_\_\_\_\_ Inch  
/10ths Merc. in \_\_\_\_\_ Inch  
Volume \_\_\_\_\_ Cu. Ft.  
Rock Pressure \_\_\_\_\_ lbs. \_\_\_\_\_ hrs.  
Oil \_\_\_\_\_ bbls., 1st 24 hrs.  
WELL ACIDIZED \_\_\_\_\_

Casing and Tubing	Used in Drilling	Left in Well	Packers
Size			Kind of Packer
16	<u>31</u>		
13			
10			Size of
8 1/4	<u>344'</u>		
6 1/4			Depth set
5 3/16			
3			Perf. top
2			Perf. bottom
Liners Used			Perf. top
			Perf. bottom

CASING CEMENTED \_\_\_\_\_ SIZE \_\_\_\_\_ No. Ft. \_\_\_\_\_ Date \_\_\_\_\_

COAL WAS ENCOUNTERED AT \_\_\_\_\_ FEET \_\_\_\_\_ INCHES  
\_\_\_\_\_ FEET \_\_\_\_\_ INCHES FEET \_\_\_\_\_ INCHES  
\_\_\_\_\_ FEET \_\_\_\_\_ INCHES FEET \_\_\_\_\_ INCHES

WELL FRACTURED Dry hole to be plugged and Abandon

RESULT AFTER TREATMENT \_\_\_\_\_

ROCK PRESSURE AFTER TREATMENT \_\_\_\_\_

Fresh Water \_\_\_\_\_ Feet Salt Water \_\_\_\_\_ Feet

Formation	Color	Hard or Soft	Top	Bottom	Oil, Gas or Water	Depth	Remarks
Surface			0	16			
Red Rock			16	31			
Slate			31	72			
Sand	White		72	90			
Slate			90	169			
Red Rock			169	230			
Slate	White		230	261			
Sand			261	285			
Slate	Blue		285	359			
Sand			359	409			
Limey Slate			409	475			
Sand			475	560			
Sandy Slate			560	680			
Lime	Hard		680	695			
Sand			695	775			
Slate	Black		775	1094			
Sandy Lime			1094	1121			
Slate	Black		1121	1187			
Slate & Shells			1187	1243			
Sand			1243	1262			
Slate			1262	1273			
Sand			1273	1307			
Slate			1307	1320			

