

West Virginia Department of Environmental Protection
Office of Oil & Gas

WELL LOCATION FORM: GPS

API: 47- 087 - 2987 P WELL NO: No.6

FARM NAME: J.A. Harris

RESPONSIBLE PARTY NAME: HG Energy, LLC

COUNTY: Roane DISTRICT: Smithfield

QUADRANGLE: Spencer 7.5'

SURFACE OWNER: Rickie W. Jarvis

ROYALTY OWNER: HG Energy LLC et al.

UTM GPS NORTHING: 4,290,041

UTM GPS EASTING: 475,273 GPS ELEVATION: 315 m.

The Responsible Party named above has chosen to submit GPS coordinates in lieu of preparing a new well location plat for a plugging permit on the above well. The Office of Oil & Gas will not accept GPS coordinates that do not meet the following requirements:

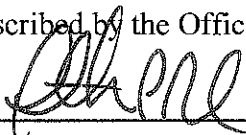
1. Datum: NAD 1983, Zone:17 North, Coordinate Units: meters, Altitude: height above mean sea level (MSL) - meters.
2. Accuracy to Datum - 3.05 meters
3. Data Collection Method:

Survey Grade GPS Post Processed Differential
Real-Time Differential

Mapping Grade GPS Post Processed Differential
Real-Time Differential

RECEIVED
Office of Oil & Gas
AUG 20 2012
West Virginia Department of Environmental Protection

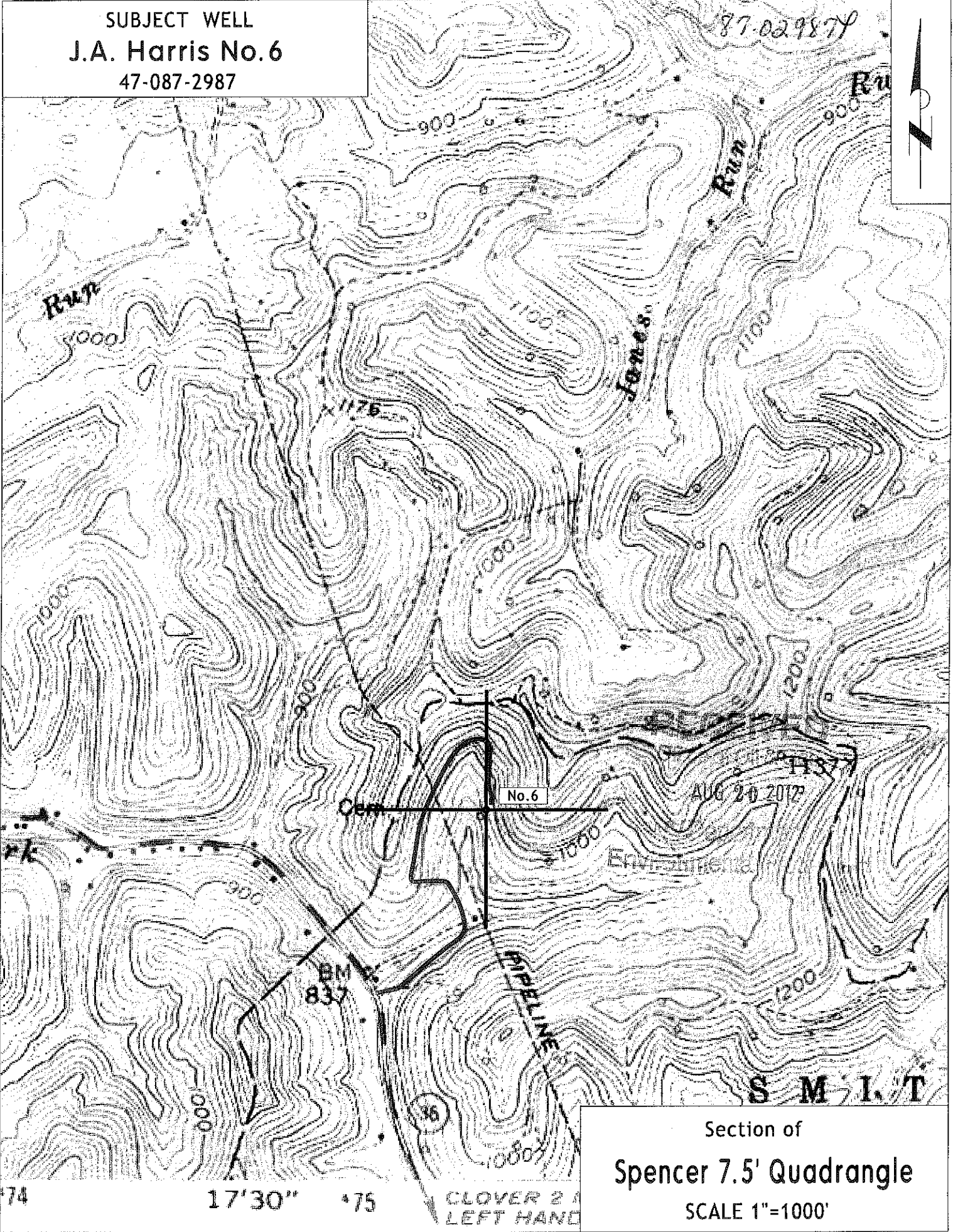
I the undersigned, hereby certify this data is correct to the best of my knowledge and belief and shows all the information required by law and the regulations issued and prescribed by the Office of Oil and Gas.


Timothy P. Roush
Signature

Professional Surveyor
Title

August 8, 2012
Date

SUBJECT WELL
J.A. Harris No.6
47-087-2987



Section of
Spencer 7.5' Quadrangle
SCALE 1"=1000'

17'30" 75

CLOVER 2
LEFT HAND